

Dateline

Dateline is a free listing of coming events only. The column is available to local community groups to assist in promoting their future events. Only charitable or non-profit community groups may use this service. We can only guarantee one issue of publicity closest to the date of the occurrence although more insertions are possible if demand is low.

Notices for Dateline should be e-mailed to miltoned@haltonsearch.com. The final deadline is noon Friday for Tuesday's edition and noon Wednesday for Friday's edition. Dateline items aren't accepted by telephone.

Saturday March 17

Knox Presbyterian Church, 170 Main St. E., holds a St. Patrick's Day tea and bazaar from noon to 2 p.m. Everyone's welcome. The church is wheelchair accessible.

The Milton branch of the Royal Canadian Legion, 21 Charles St., holds a meat roll at 4 p.m. in the clubroom.

The Salvation Army/Khi Community holds its Run Club at 8 a.m. with a one-hour run. For meeting location and route, call (905) 875-1022.

Monday March 19

The Milton and District Horticultural Society meets at 7:30 p.m. at the Royal Canadian Legion, 21 Charles St., with speaker John McNeil, manager of forestry for Oakville, speaking on 'Trees for Our Future'.

A nine-week course on public speaking, leadership and confidence-building takes place at the Khi Community Centre weekly from 7 to 9:30 p.m. It's open to those aged 16 and older. The cost is \$160, which includes the course manual. It's offered by Christopher Leadership Courses of Canada. For more information or to register, call (905) 664-8375 or visit www.thelumen.com.

The Town of Milton presents a seminar on reading food labels at 7 p.m. at the Milton Leisure Centre, 1100 Main St. E. It's free for centre members and \$5 for non-members. For details, visit www.milton.ca. To register, call Tracy Hassfeldt at (905) 878-7946, ext. 2706.

The Lighthouse Program for Grieving Children in Oakville holds its peer support group from 6 to 7:30 p.m. for children and teens aged three to 18 who've lost a parent or sibling. For more information or to register, call (905) 337-2333 or e-mail lighthouseprogram@bellnet.ca.

Milton District Hospital holds a one-on-one breastfeeding clinic with a certified lactation consultant from 1:30 to 3 p.m. For more information or to make an appointment, call Jill Hicks at (905) 878-2383, ext. 7610.

The Salvation Army/Khi Community holds its Run Club at 5:30 p.m. with a 30-minute run. For meeting location and route, call (905) 875-1022.

Tuesday March 20

The Learning Disabilities Association of Halton (LDAH) holds an educational workshop for parents of children with learning disabilities and/or ADHD. The workshop is about the HANDLE (Holistic Approach to Neuro Development and Learning Efficiency) program. It takes place from 7 to 8:30 p.m. at the LDAH office, 560 Guelph Line, in Burlington. The cost is \$10 for LDAH members and \$15 for non-members. For more information or to register, call (905) 333-1977 or visit www.ldahalton.ca.

Help for Parents, a Halton parent support group, meets in

• see more **DATeline** on page B8

Daffodil campaign volunteers needed

A cure for cancer could be just a daffodil away.

The Canadian Cancer Society is looking for volunteers to help sell the flowers March 29 to April 1 as part of its daffodil campaign.

Just three hours of your time is all that's needed.

For more information, call Jennifer at (905) 878-3597.

AFFORDABLE HOMES IN YOUR PRICE RANGE & AREA

Visit:

www.haltonbestbuys.com

Prudential Town Centre Realty Brokerage

Open Houses This Weekend

SUNDAY MARCH 18

1-4 pm, 10 Memorial St., \$539,900 Gaby Bajin, Royal LePage Meadowtowne Realty, 905-878-8101
2-4 pm, 184 Featherstone Rd., \$429,900 Dorothy Truman, Royal LePage Meadowtowne Realty, 905-878-8101
2-4 pm, 15364 Tenth Side Rd., \$649,900 Michael Imrie, Royal LePage Meadowtowne Realty, 905-878-8101
2-4 pm, 641 Elliott Cres., \$369,900 Carole Budoworth, Royal LePage Meadowtowne Realty, 905-878-8101
2-4 pm, 46 Anne Blvd. Kim Scott, Royal LePage Meadowtowne Realty, 905-878-8101
2-4 pm, 460 Kearns Drive Lynda Aguero, Royal LePage Meadowtowne Realty, 905-878-8101
2-4 pm, 65 Anne Blvd., \$319,900 Tom Snow, ReMax Real Estate Centre 905-878-7777
1-4 pm, 1061 Barclay Circle, \$299,900 Louise Crew-Hansford, Sutton Group Elite Realty Ltd., 905-875-3324
2-4 pm, 128 King St. Carol Brooks, ReMax Real Estate Centre 905-878-7777
2-4 pm, 380 Woodward Ave. Gladys Cranford, ReMax Real Estate Centre 905-878-7777
2-4 pm, 8159 Eighth Line, \$449,900 Kevin Howden, ReMax Real Estate Centre 905-878-7777
2-4 pm, 11450 Inglis Dr., Brookville, \$1,089,000 Ingrid Hollinger, Royal LePage Meadowtowne Realty, 905-878-8101
2-4 pm, 1016 Borden Lane, \$299,888 Barb King, ReMax Real Estate Centre 905-878-7777
2-4 pm, 492 Lowe Lane, \$349,900 Kim Scott, Royal LePage Meadowtowne Realty, 905-878-8101
2-4 pm, 460 Kearns Dr., \$312,500 Kim Scott, Royal LePage Meadowtowne Realty, 905-878-8101
2-4 pm, 46 Anne Blvd., \$359,900 Kim Scott, Royal LePage Meadowtowne Realty, 905-878-8101
2-5 pm, 1644 Ramshaw Cres., \$574,900 Chris Barnetteam, ReMax Performance Realty Inc., 905-270-2000

VISIT AN
OPEN HOUSE
THIS WEEKEND!

Also check the
WEEKEND SPOTLIGHT ON HOMES
& THE REGIONAL PAGE

showcasing more Open Houses and New Listings!

Living HEALTHY



There is more to bedwetting than changing the sheets, find the answers to your concerns

Halton Healthcare's Living Healthy Series

Presents

A PARENT & CAREGIVER'S SEMINAR ON BEDWETTING

Thursday, March 22nd

7:30 pm - 8:30 pm

MDH Classroom • Milton

Special Guest Speaker
Lida Jones, RN,

Pediatric Surgery, Urology & Enuresis
McMaster Children's Hospital, Hamilton, ON

To register and for more information please call
905-338-4379

or email elittle@haltonhealthcare.on.ca

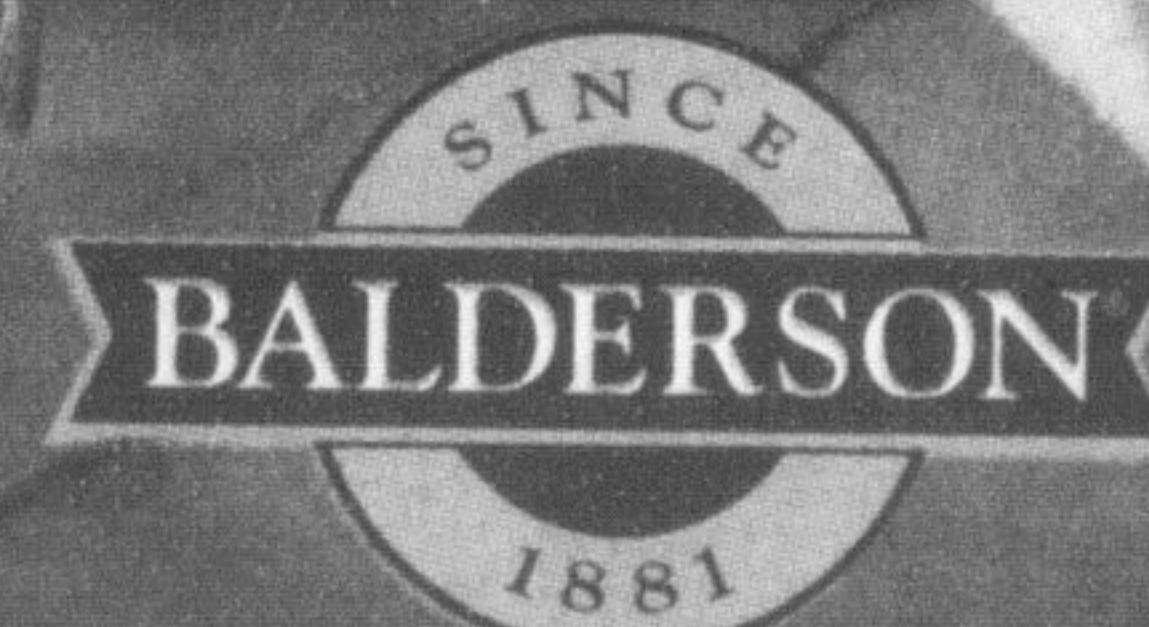
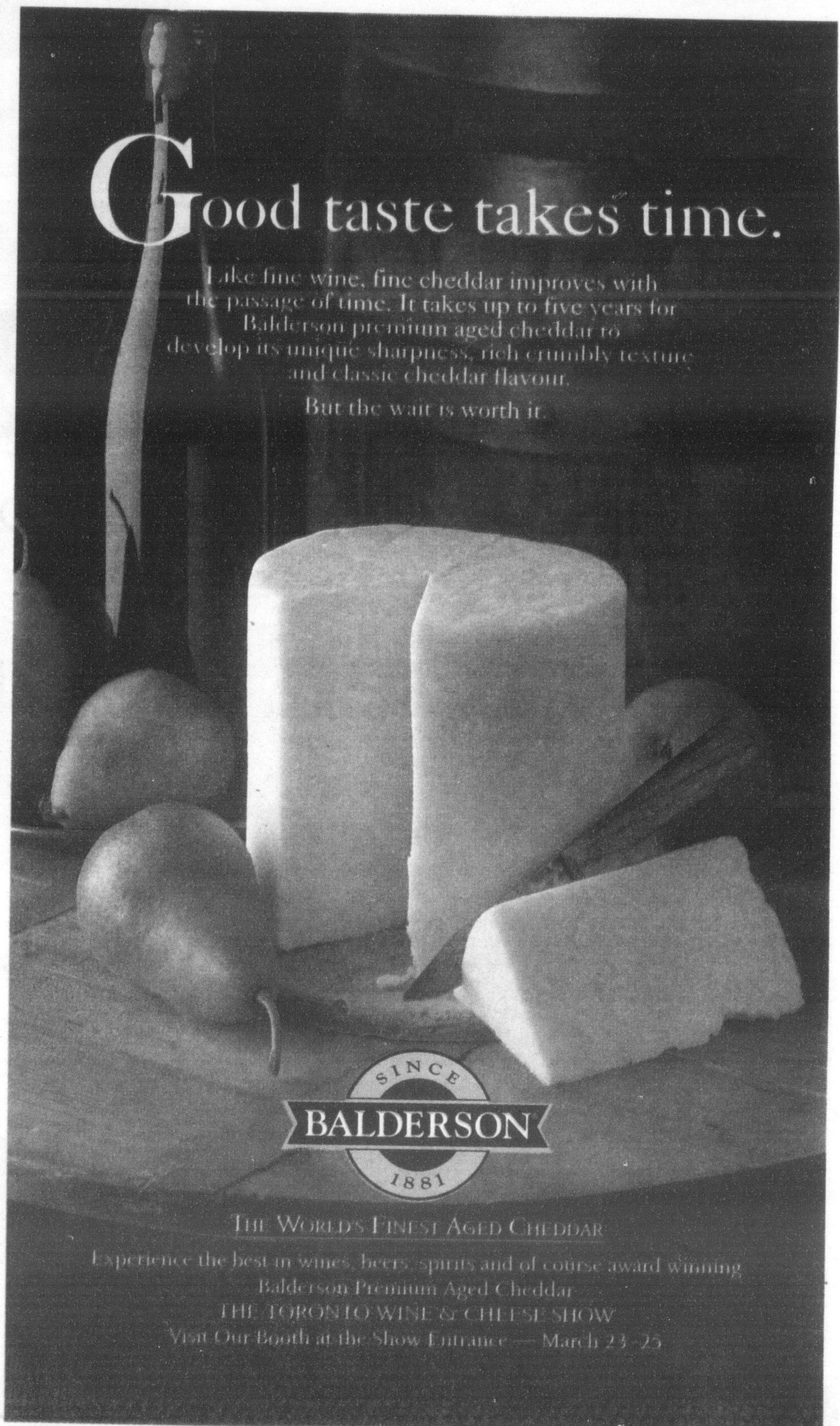


Halton Healthcare

Good taste takes time.

Like fine wine, fine cheddar improves with the passage of time. It takes up to five years for Balderson premium aged cheddar to develop its unique sharpness, rich crumbly texture and classic cheddar flavour.

But the wait is worth it.



THE WORLD'S FINEST AGED CHEDDAR

Experience the best in wines, beers, spirits and of course award winning

Balderson Premium Aged Cheddar

THE TORONTO WINE & CHEESE SHOW

Visit Our Booth at the Show Entrance — March 23-25

"The business that considers itself immune to the necessity for advertising sooner or later finds itself immune to business."

Derby Brown

Enter The "Ugly Bathroom" Contest

WIN a \$4,000* Dream Bathroom Upgrade *Estimated Retail Value

Prize must be redeemed between April and December 2007

Name: _____

Address: _____

City: _____ Ontario Postal Code: _____ Phone: _____

Email: _____

Answer the skill testing question: $12 + (9 \times 5) - 3 =$ _____

Please check if you would like to receive additional information from THE ENSUITE ____ A Premier KOHLER Bath and Kitchen Showroom

Complete & submit this official ballot accompanied with a picture of your "Ugly Bathroom" to: THE ENSUITE

1150 Corporate Drive, Burlington (905) 335-6744

Ballot must be dropped off at THE ENSUITE, no mail entries accepted. Contest closes March 25, 2007. One entry per household. Rules and regulations available.