

Provincial loan paves way for major Roxul expansion

By Stephanie Thiessen
CANADIAN CHAMPION STAFF

Local insulation manufacturer Roxul Inc. announced its plans yesterday morning for a \$135 million plant expansion that'll double the size of its current production facility and see the creation of 100 jobs.

"Today the people of Milton can celebrate this win for their local community," said Jean-Marc Lalonde, Parliamentary Assistant to the Minister of Economic Development and Trade, at a press conference at the Harrop Drive facility.

This project has been made possible by a \$10 million loan from the provincial government through its Advanced Manufacturing Investment Strategy (AMIS), which provides repayable loans — interest free for up to five years — to support investments in technology and innovation.

"That's a terrific vote of confidence in the workers of this plant, the Milton community and the province," Lalonde said.

Ground will be broken this summer, with the expansion — which will bring the facility to 700,000 square feet — expected to be completed in early 2009.

The new production line — adjacent to its current facility — will manufacture a range of new commercial, industrial and residential insulation products. It'll include the development of leading-edge manufacturing processes that conserve energy and generate zero waste while using recycled waste materials from the steel and construction industries.

Roxul's new production line will be fitted with state-of-the-art technologies to provide the most effective emission controls.

"While our production output is expected to triple, our total emissions will be less than half of the provincial limits," said Roxul president Trent Ogilvie.

A total of 232 jobs will be created or retained thanks to the expansion over a five-year period. Additional jobs will be created through the construction phase.

"It's a huge investment and commitment," Ogilvie said.

Mayor Gord Krantz said the new project means a lot to the community. "I want to thank Roxul for not resting on your laurels... but moving forward with production and development," he said.

Roxul is part of Rockwool International, the world's largest producer of mineral wool insulation. Its products are fire resistant, water repellent, non-corrosive and resistant to mould, fungi and bacteria growth.

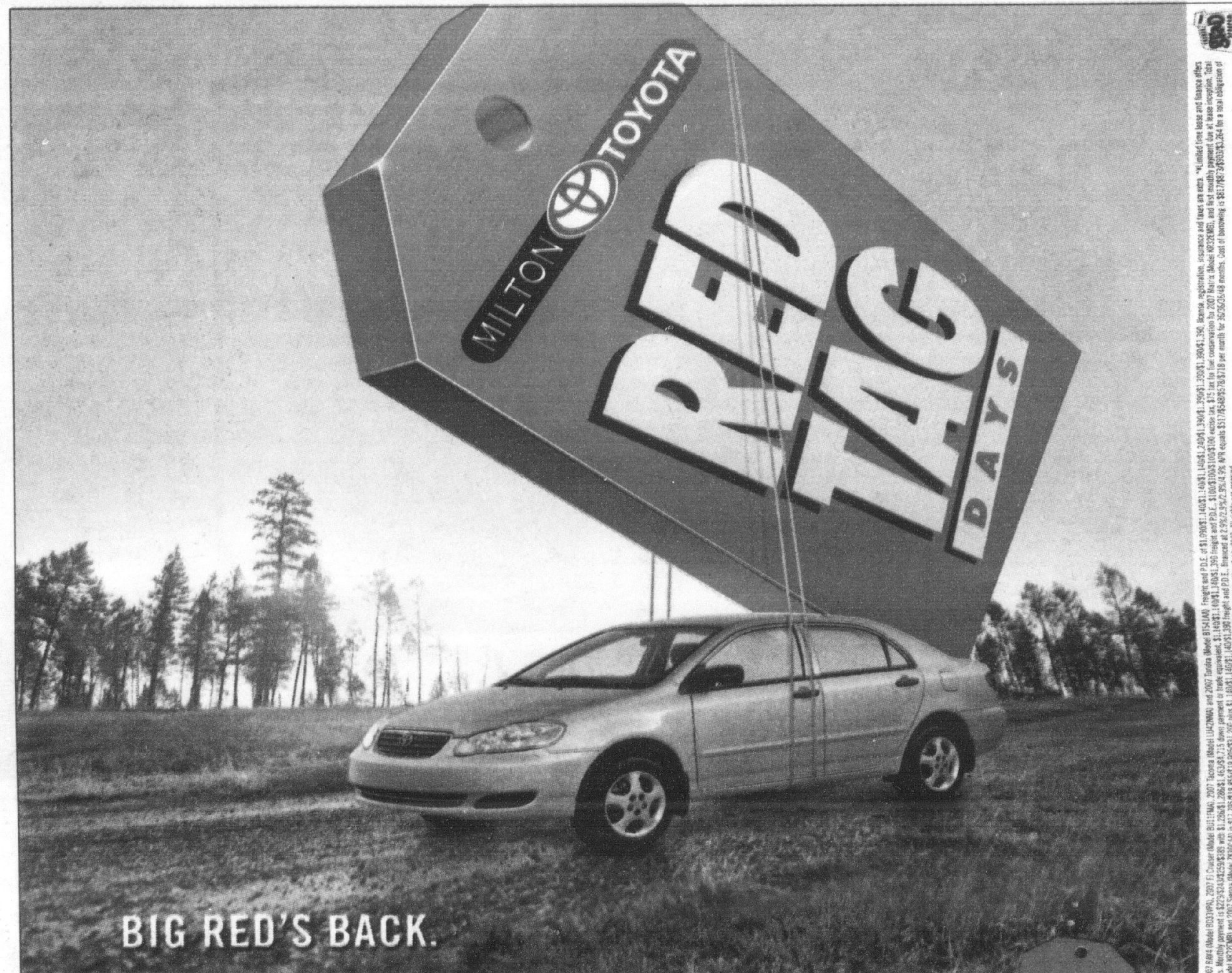
In a press release, Minister of Economic Development and Trade Sandra Pupatello said AMIS has so far supported seven innovative projects that'll generate almost \$350 million in new investments. It'll also support the creation or retention of about 2,700 jobs.

Stephanie Thiessen can be reached at sthiessen@milton-canadianchampion.com.



EXPANSION PLANS UNVEILED: Jean-Marc Lalonde (left), Parliamentary Assistant to the Minister of Economic Development and Trade, joins Roxul President Trent Ogilvie (centre) and Mayor Gord Krantz in unveiling plans for the Roxul expansion at yesterday's news conference.

SABRINA BYRNES / SPECIAL TO THE CHAMPION



BIG RED'S BACK.

2007 COROLLA CE STYLE. QUALITY. DEPENDABILITY. AND A BIG RED TAG.

LEASE FOR **\$229*** @ **4.9%** APR
PER MONTH FOR 60 MONTHS WITH \$1,296 DOWN
FREIGHT AND P.D.E. INCLUDED

\$17,795
MSRP**

HWY 5.3L/100 KM (53 MPG) CITY 7.1L/100 KM (40 MPG)

Every Corolla sold in Canada is made in Canada and this stylish compact is packed with impressive features. Highlights include class-leading fuel economy, advanced dual-stage driver and passenger airbags, rear seats that fold 60/40 for flexibility and 13.6 cubic feet of gear and luggage-toting trunk capability.

- 1.8 L, 126 hp engine • 5-speed manual transmission • A/C • AM/FM stereo CD • Power locks and mirrors
- Engine immobilizer • Keyless entry & more

Add a power rearview, power windows and aluminum alloy wheels for only \$14 more per month when you step up from a 2007 Corolla CE to the 2007 Corolla CE Special Edition.

PURCHASE FINANCING **2.9%** APR FOR 36 MONTHS

2007 MATRIX VERSATILE COMPACT GOES LOW. 2.9% LOW.

LEASE FOR **\$259*** @ **4.9%** APR
PER MONTH FOR 60 MONTHS WITH \$1,453 DOWN
FREIGHT AND P.D.E. INCLUDED

\$19,905
MSRP**

HWY 6.0L/100 KM (47 MPG) CITY 8.0L/100 KM (35 MPG)

The versatile Matrix comes with an irresistible list of standard features. First-rate fuel efficiency that squeezes power and mileage out of every drop of gas, convenient flip-up hatch window, cargo tie downs, side and sub-floor storage. And that's just the beginning.

- 1.8 L, 126 hp engine • 5-speed manual transmission • A/C • Power locks • Illuminated and keyless entry with hatch release • Optitron electronic gauges • AM/FM stereo CD
- 16" Aluminum alloy wheels & more

PURCHASE FINANCING **2.9%** APR FOR 36 MONTHS

2007 SIENNA CE BIG ON SAFETY AND FUEL SAVINGS.

LEASE FOR **\$389*** @ **5.1%** APR
PER MONTH FOR 60 MONTHS WITH \$4,715 DOWN
FREIGHT AND P.D.E. INCLUDED

\$31,200
MSRP**

HWY 8.1L/100 KM (35 MPG) CITY 11.1L/100 KM (24 MPG)

The ultimate minivan for performance and safety. State-of-the-art safety features like dual-stage front airbags and rear head/side curtain shield bags provide protection for the driver and all three rows of passengers. Unmatched utility, luxury and fuel savings leave the competition far behind.

- 3.5 L, 266 hp V6 engine • 5-speed automatic transmission • ABS with brake assist and Electronic Brake Force Distribution (EBD) • A/C • Power windows, locks and heated mirrors • Dual sliding doors • Cruise control • Tilt and telescopic steering • Illuminated and keyless entry • AM/FM CD with MP3 player and steering wheel audio controls & more

PURCHASE FINANCING **4.9%** APR FOR 48 MONTHS

For more on Red Tag Days and the entire Toyota lineup go to www.realpeoplesellinggreatcars.ca NO SECURITY DEPOSIT ON ALL 2007 LEASES.



Yaris from \$13,800 MSRP** Camry LE from \$25,500 MSRP** RAV4 \$29,400 MSRP** Tacoma D-Cab V6 from \$32,535 MSRP** The All-New Tundra D-Cab VR from \$36,500 MSRP** FJ Cruiser from \$29,990 MSRP**

MILTON TOYOTA

400 STEELES AVENUE, MILTON

Toll Free: 1-800-617-4025 • Fax: (905) 875-1516 info@miltontoyota.com

Bill's

AUTO BODY
(ROYAL ATLANTIC) INC.

Working **#1**
Harder
to Stay

INSURANCE CLAIMS ARE OUR SPECIALTY

Now OPEN Saturday mornings!

Complete auto body and refinishing services

155 Nipissing Rd., Milton
(905) 878-2721

*MSRP includes destination charge, freight and P.D.E. **MSRP includes destination charge, freight and P.D.E. ***MSRP includes destination charge, freight and P.D.E. ****MSRP includes destination charge, freight and P.D.E. *****MSRP includes destination charge, freight and P.D.E.