

natural *style*

Charleston Homes shows homebuyers a more leisurely way of life

With today's hurried pace of life and constant daily demands, wouldn't it be nice to go home to a place that can help you escape all of that? A place where the stars burn bright on a clear night, and a place where you can take in the fresh air? How about a place where you children can play in the neighbourhood with ease and a feeling of safety?

At Charleston Homes' Mill Run, this is what awaits you.

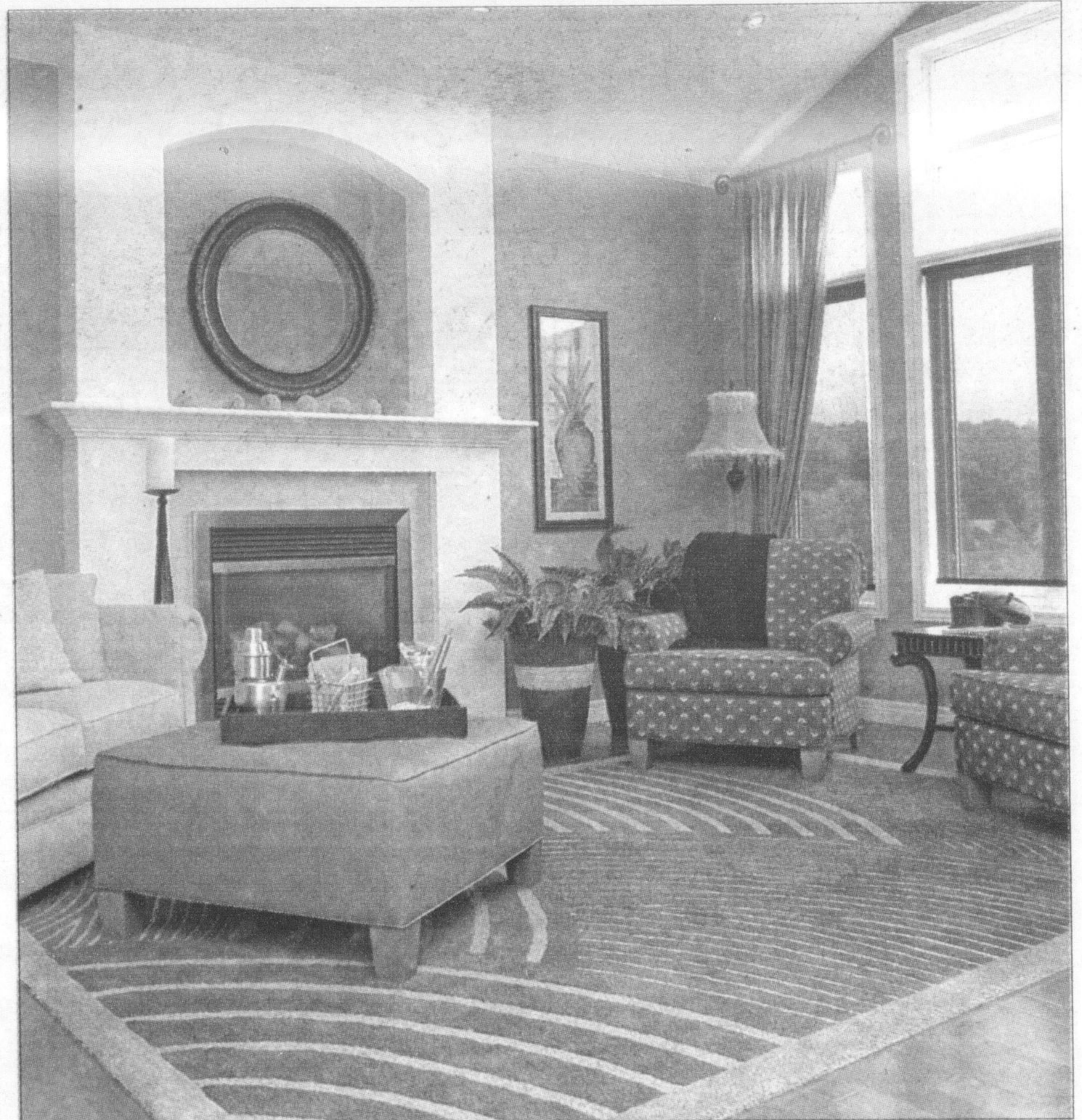
What you'll see are the sweeping greenspaces of conservation land that surround you. What you'll hear is the bubbling waters of a winding river that intersects this gentle community. And what you'll feel is that, at last, you have come home.

The charming hamlet of Rockwood provides the perfect backdrop. This historic town boasts all the culture and convenience of a larger city, without sacrificing that relaxing away-from-it-all small town ease. With parks, walking trails, open spaces, and the natural world all around you, this is a place where any family would be proud to put down roots.

Charleston Homes has worked with the natural world to create a concept of the ideal living environment for anyone who values substance as much as style. Although Charleston Homes has primarily built custom estate homes in smaller enclaves, they have recently ventured with great success, into the construction of master-planned communities. Mill Run is one such example of what is possible when a great plan meets the quality of experience.

Nestled along the banks of the Eramosa River, Mill Run is now in its next phase of home construction. This exclusive community features 160 fully detached homes on expansive 50-foot lots. With bungalow and two-storey designs, Charleston Homes is confident in their ability to suit your needs.

For empty nesters looking for convenience, Charleston Homes has a great selection of true bungalow plans. Second bedrooms are also included in these bungalow plans for extra space when adult children come to visit. With five bungalow plans to select from, you're sure find



a style to match you're life.

For those looking for a bit more room, Mill Run boasts an impressive four designs for two-story homes. Ranging in size from 1,797 sq. ft to 2,782 sq ft., these homes are priced from the low \$300,000's and are sure to make your dreams come to life.

Charleston Homes' model is open at the Mill Run Site off Highway 7 in Rockwood. Site hours are Monday through Wednesday from 1 p.m. to 7 p.m., as well as Saturday, Sunday and holidays from 12 to 5 p.m. Call for more details at 519-856-4411 or visit www.charlestonhomes.ca.

GET MORE IN ROCKWOOD FOR A LIMITED TIME!

HERE'S YOUR LAST CHANCE

TO GET MORE FOR YOUR MONEY!

FROM \$333,900

MUCH MORE HOME WITH LARGER 50' LOTS



MILL RUN

In Rockwood

MORE SIZE
50' WIDE LOTS

MORE VALUE
CUSTOM INSPIRED DESIGN

MORE LUXURY
LUXURY LIVING PACKAGE

Sale Centre Hours
Mon. - Wed. 1 - 7 pm,
Thurs. - Fri.
By Appt. Only.
Sat., Sun. & Holidays
12 noon - 5pm



ALL PRICES AND SPECIFICATIONS ARE SUBJECT TO CHANGE WITHOUT NOTICE. E.&O.E.



WWW.CHARLESTONHOMES.CA

519-856-4411