

cover *story*

Innovative designs and incredible variety make Rockwood Ridge by Ashton Ridge Homes a community for everyone

Ashton Ridge Homes is very excited on the release of the final phase of their signature Rockwood Ridge project. Although it will bring closure to an area where they've been building for the past six years, it has been most rewarding being a part of creating an amazing family community. Rockwood Ridge prides itself on not being just another subdivision, but quite the opposite. From the minute you enter off the main road, you can feel yourself starting to unwind. Surrounded by magnificent views and a beautiful forested ridge, the homes have the most welcoming curb appeal. Ashton Ridge Homes prides itself on building luxury affordable homes for all - from first time homebuyers, families, to empty nesters. With an abundance of innovative designs, and a variety of lot sizes and styles, there is definitely a home for everyone.

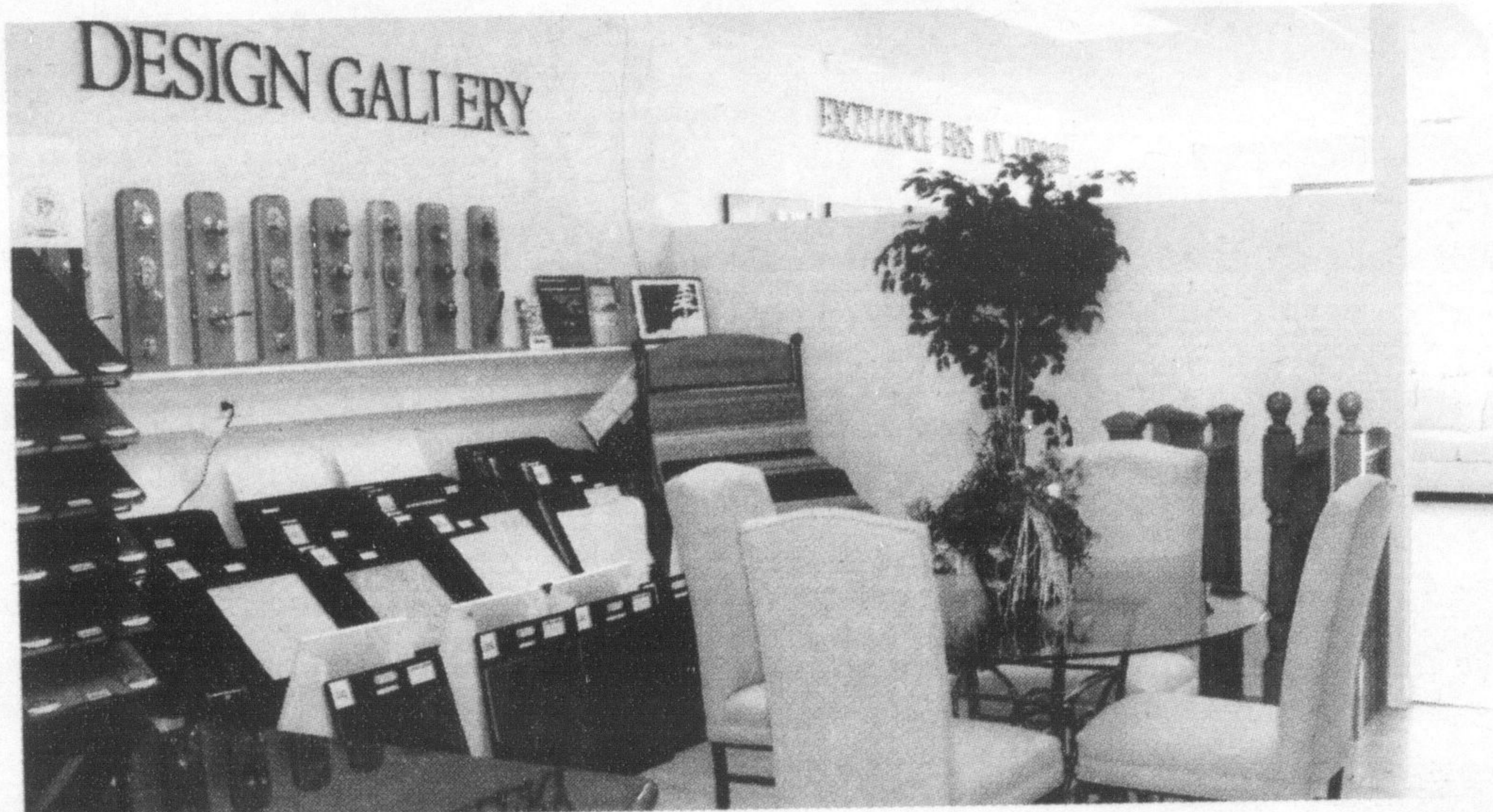
The single family two storey homes are sitting on 35 - 50 foot lots and range in size from 1683 square feet to 2893 square feet. These functional family homes carry three or four bedrooms. There are three bungalow plans which range from 1266 square feet to 1804 square feet. Ashton Ridge Homes has also developed Luxury, Platinum and Diamond Series upgrade packages which can be added to any of the homes. With

the prices starting at \$272,900, it's easy to see the affordability factor and there still remains a few walk-out and treed lots.

The final phase is also offering luxury townhomes with a variety of sizes and designs. All townhomes are over 1500 square feet and start at \$219,900. You also have the option to add an upgrade package to your unit.

There is a beautifully appointed model home to tour at Rockwood Ridge. The Del Ray offers size, style, and practicality for the growing family. This 4 bedroom 2-storey has also utilized the loft area on the third floor, making the home 2,760 square feet. With the open concept floorplan, it's definitely an entertainers dream.

To visit Rockwood Ridge - Take 401 to Highway 25 north. Go west on Hwy. #7 and the Sales Centre will be on your right hand side once you enter Rockwood. Alternatively, take Guelph Line to Eramosa County Road (the BIG stop sign just before #7), turn right and continue to the end, turning left at that point (Highway #7). One mile on your right, you will see the Rockwood Ridge signage. Hours are Mon-Wed 2-7; Sat-Sun 12:30-5:00. For further information, please contact Tammy at (866)275-5558 or visit www.ashtonridge.com



Ashton Ridge Homes' convenient design gallery makes choosing your flooring, tiles, paints and more a little less confusing.



A bright and sunny living room is complemented by a beautiful wrought iron staircase.



The beautiful streetscape at Ashton's Ridge Homes' Rockwood Ridge. Fabulous views and lots of green space make this a wonderful community for families.