

Dateline

Saturday Jan. 20

The Milton Historical Society holds a workshop to learn the art of blacksmithing at the Waldie Blacksmith Shop, 16 James St. For more information or to register, call (905) 875-4156.

The Milton branch of the Royal Canadian Legion, 21 Charles St., holds a meat roll at 4 p.m. in the clubroom.

Monday Jan. 22

The Lighthouse Program for Grieving Children in Oakville holds its peer support group from 6 to 7:30 p.m. for children and teens aged three to 18 who've lost a parent or sibling. For more information or to register, call (905) 337-2333 or e-mail lighthouse-program@bellnet.ca.

Milton District Hospital holds a one-on-one breastfeeding clinic with a certified lactation consultant from 1:30 to 3 p.m. For more information or to make an appointment, call Jill Hicks at (905) 878-2383, ext. 7610.

The Halton Hills Quilters Guild meets at the Halton Hills Cultural Centre, 9 Church St., in Georgetown at 7:15 p.m. New members are welcome. For more information, call Janice Brawley at (905) 878-6875.

Tuesday Jan. 23

Help for Parents, a Halton parent support group, meets in the evening in the basement of the church at 5720 New St. in Burlington. This non-denominational self-support group

helps parents of children who are in trouble at home, at school or with the law or who are abusive or taking drugs. The group is a member of the Association of Parent Support Groups in Ontario. For more information, call 1-800-488-5666 or visit www.apsgo.ca.

Calling New Parents, a free drop-in program for parents and babies aged 6 months and younger, meets with a public health nurse to discuss parenting and infant care. The group meets at the new Ontario Early Years Centre at 410 Bronte St. from 1:30 to 3:30 p.m. For more information, call (905) 825-6000, ext. 7299.

The Milton Al-Anon group meets at 8 p.m. at St. Paul's United Church, 123 Main St. E., for family and friends of alcoholics.

St. Paul's United Church, 123 Main St. S., holds its Parent's Morning Out from 9:30 to 11 a.m. For more information, call (905) 878-1286.

Milton District Hospital holds a one-on-one breastfeeding clinic with a certified lactation consultant from 9:30 to 11:30 a.m. For more information or to make an appointment, call Jill Hicks at (905) 878-2383, ext. 7610.

Wednesday Jan. 24

The Milton Safety Committee meets at 7 p.m. at the Milton police station on Childs Drive. For information, call Jan Mowbray at (519) 853-4492 or e-mail her at jan@janmowbray.ca.

• see more **DATeline** on page B6

THE CITY'S BEST BRIDAL SHOW OFFERS FREE ADMISSION FOR BRIDES-TO-BE

TORONTO STAR National BRIDAL SHOW

JANUARY 26-28, 2007
National Trade Centre, Exhibition Place
(Direct Energy Centre)

Hours: Friday 5pm-10pm * Saturday 10am-9pm * Sunday 10am-6pm
Show Admission: \$15.

FREE BRIDAL GOWN
to be given away every 15 minutes from Sposabella & Ballett's, The Wedding Specialists

DESTINATION WEDDING FASHION SHOWS
* Friday 7:30pm
* Saturday 2:00pm & 7:00pm
* Sunday 1:00pm & 4:00pm
Sponsored by Islands of the Bahamas

DREAM HONEYMOON!
to any Sandals Resort in the Caribbean

Sandals
AIR CANADA
vacations

\$5000 HOME ACCESSORY PRIZE PACKAGE
from The Bay & Home Outfitters National Gift Registry

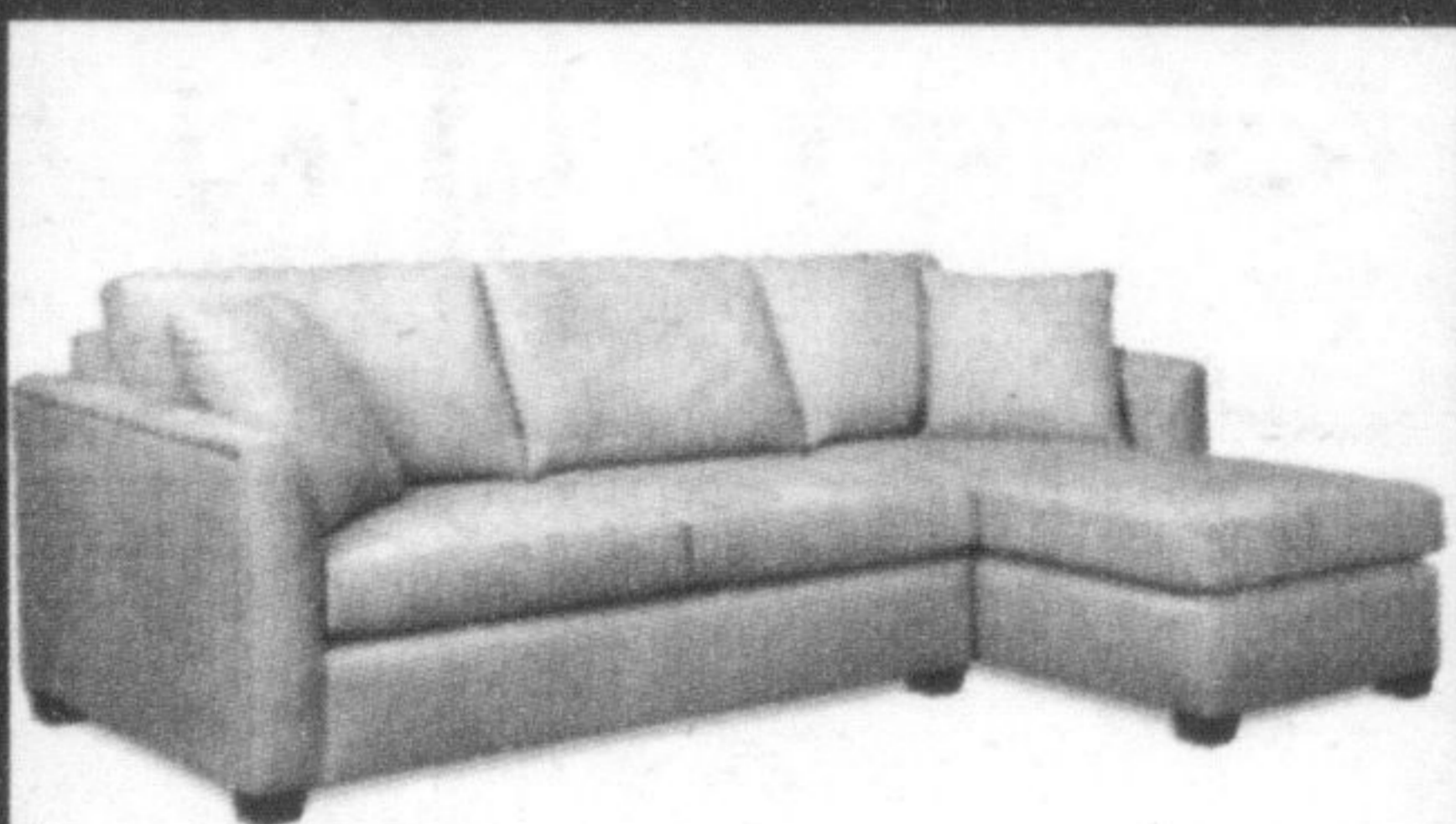
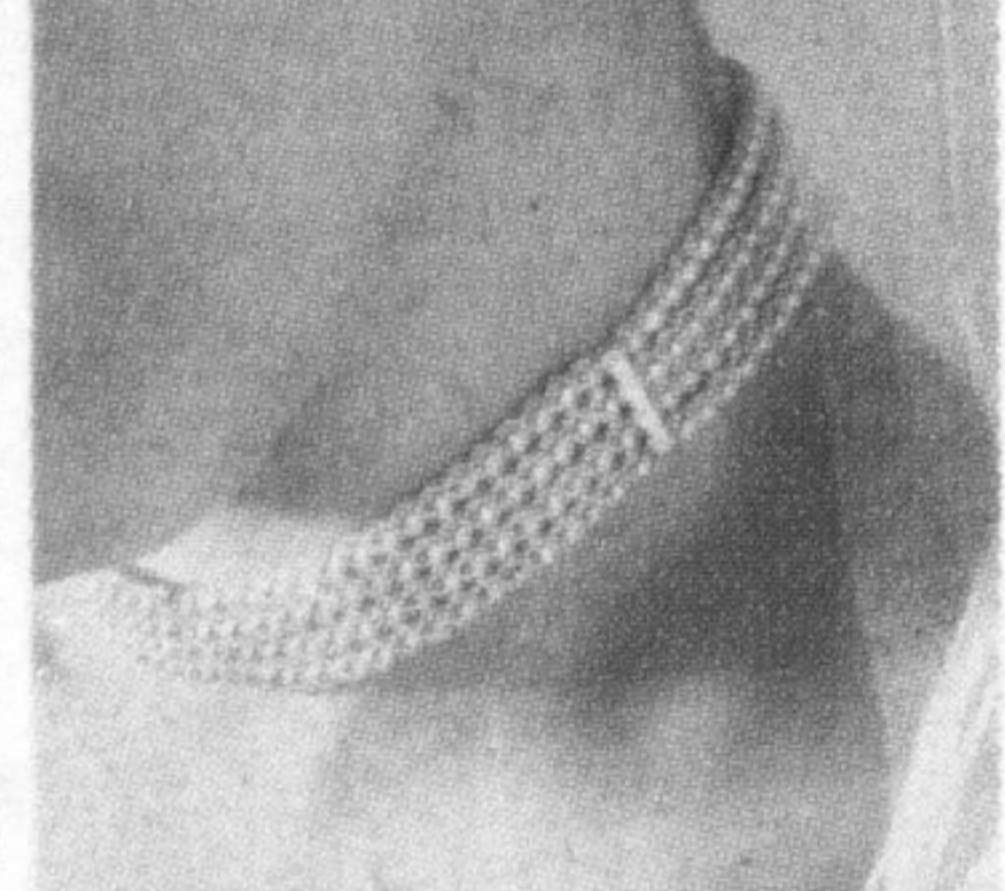
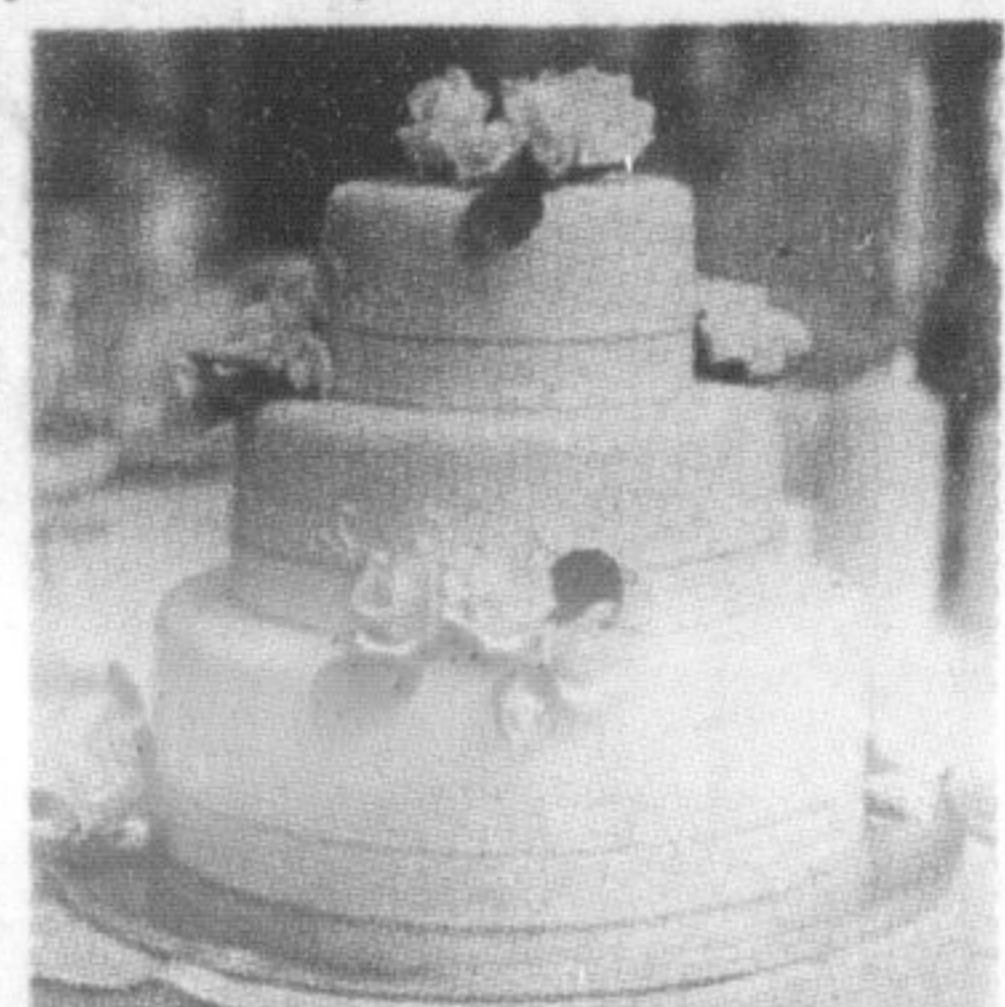
THE BIGGEST BRIDAL GOWN SALE IN THE CITY!
brought to you by Sposabella

"BRIDES-TO-BE" ARE FREE
Register for your free ticket by January 21, 2007 at www.nationalbridalshow.com

* Sensational Fashion Show & Destination Wedding Ideas!
* Hundreds of Exhibitors offering services for your special day!
* Freixenet Sparkling Wine Garden! * Everything for the Groom too!
* Visit the Brides Choice Photography Gallery for photo excellence & great ideas!

the Bay THE NATIONAL GIFT REGISTRY *Home Outfitters* WEDDINGBELLS
PART OF THE BAY FAMILY OF STORES
www.nationalbridalshow.com

For information or exhibitor opportunities 905-815-0017 or 1-800-265-3673



Sofa with Chaise
\$1975 \$1600 set



Table 4 Chairs
\$2750 \$2100



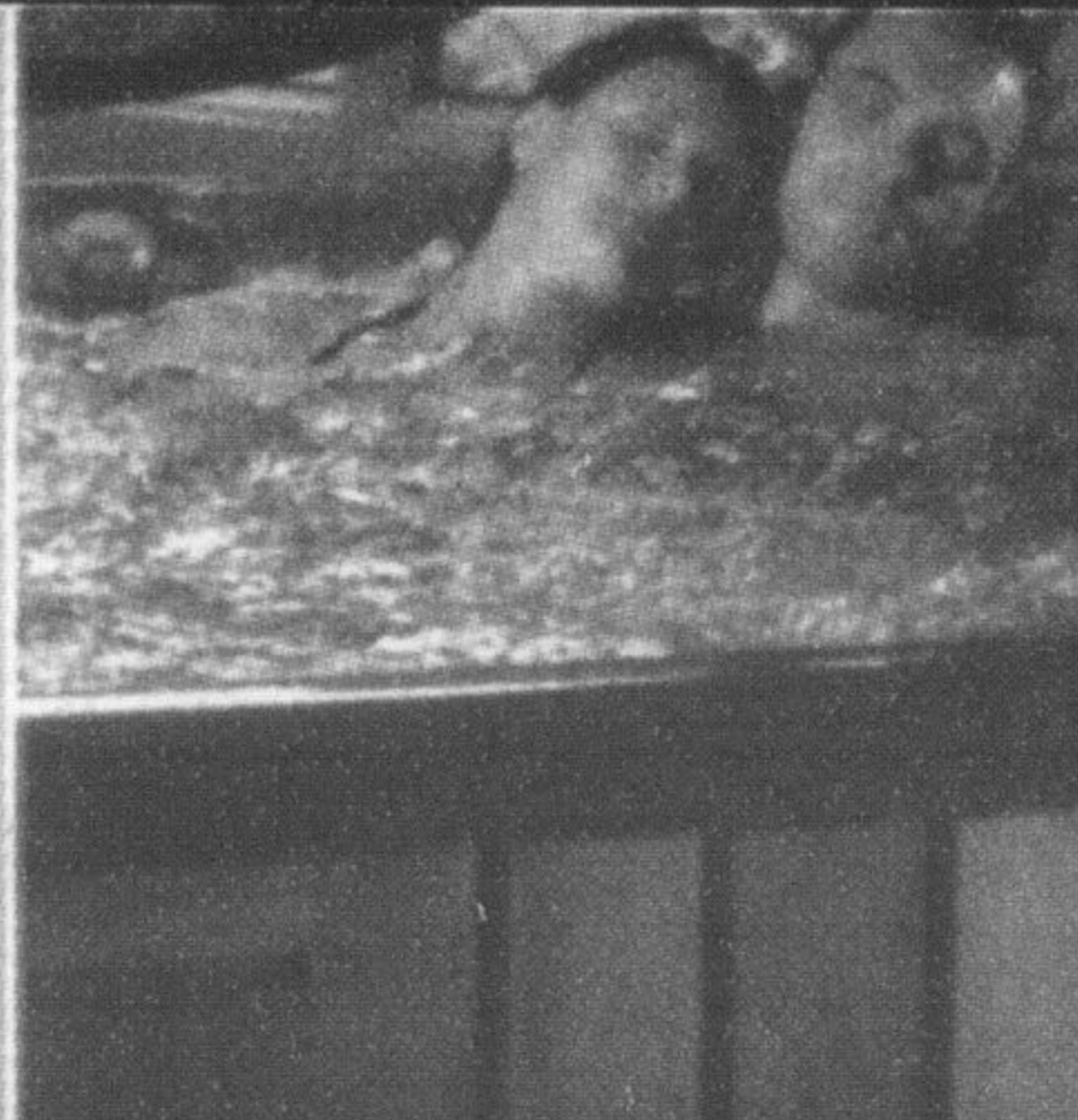
Sofa & Chair 1/2
\$2325 \$1599 set

Bedding
up to
50% OFF

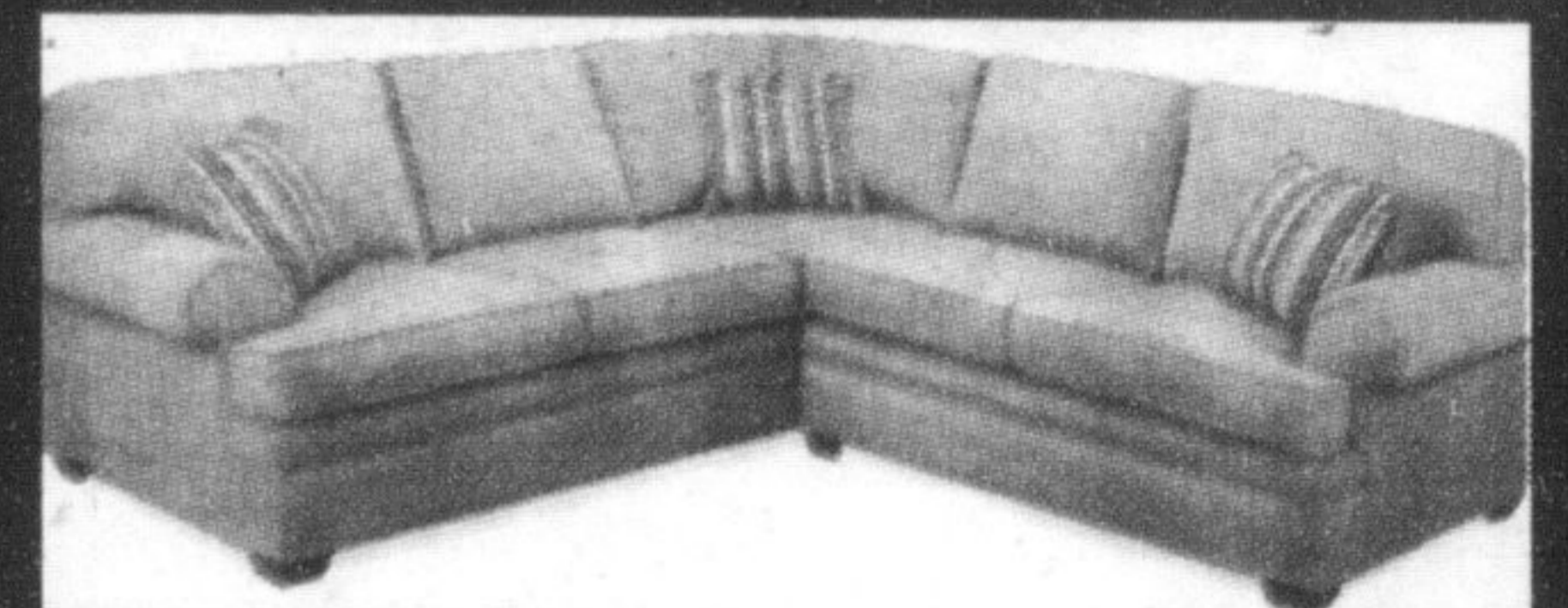
Accessories
20-40% OFF

Cash & Carry **Mattress & Box Springs** Cash & Carry
From **\$50** a piece

PRICED TO CLEAR!



Dining Room
Table & Chairs - \$3370 \$2700
Buffet & Hutch - \$1800 \$1450



Sectional Sofa



Bedroom Set - \$3320 \$2500
Sleigh Bed with low profile, dresser, night



Emerald ISLE CLOSING
HOME DECOR THIS LOCATION ONLY.

400 MAIN STREET EAST MILTON
905-693-9948

*NOT EXACTLY AS SHOWN