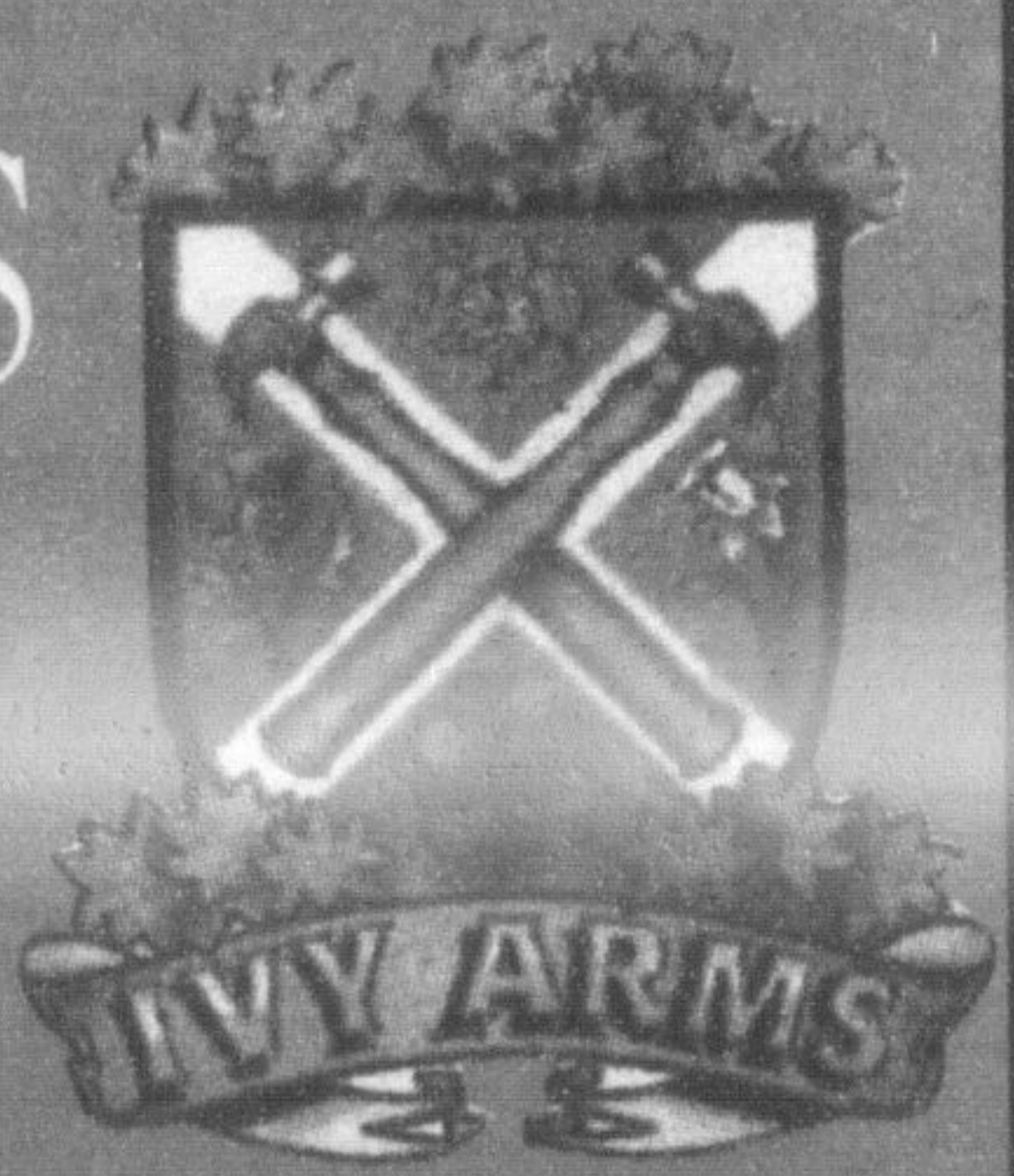


The Ivy ARMS

201 Main Street, Milton
905-876-4899
Locally owned & operated



All Month

2 for 1

Lunch Board Specials

This Weekend:

Saturday: CARL COOPER BAND
following the Leafs Game!

KARAOKE
Friday



NATIONAL GLAUCOMA AWARENESS MONTH

What is Glaucoma?

Glaucoma is an eye disease caused by increased pressure within the eye. It is one of the most common causes of blindness and affects 1 in 100 Canadians over age 40. Although it often occurs in older people, it can develop at any age.

People with glaucoma probably lose their sight because increased pressure in the eye and other factors (such as poor blood flow) affect the optic nerve at the back of the eye. The eye slowly loses nerve function, and loss of side (peripheral) vision. This occurs painlessly, even unnoticeably.



Dr. Ron Strohan
Optometrist

WAKEFIELD PROFESSIONAL CENTRE
106 WAKEFIELD RD., MILTON
905-878-5882



ROBERT (PIE) LEE INSURANCE AGENCY

Life - Disability - Critical Illness - Annuities - RRIFs
- LIFs - RRSP's - Mutual Funds (M.S.J.L.) - RESP's
Celebrating 32 years of "Home Town" Business

Bob "Pie" Lee
bob@robertleeinsurance.com



Kim Mitchell
kim@robertleeinsurance.com

245 Commercial St.
OFFICE 905-878-5786

Milton, ON L9T 2J3
FAX: 905-878-3692

Milton Fire Department

January 15th - 20th

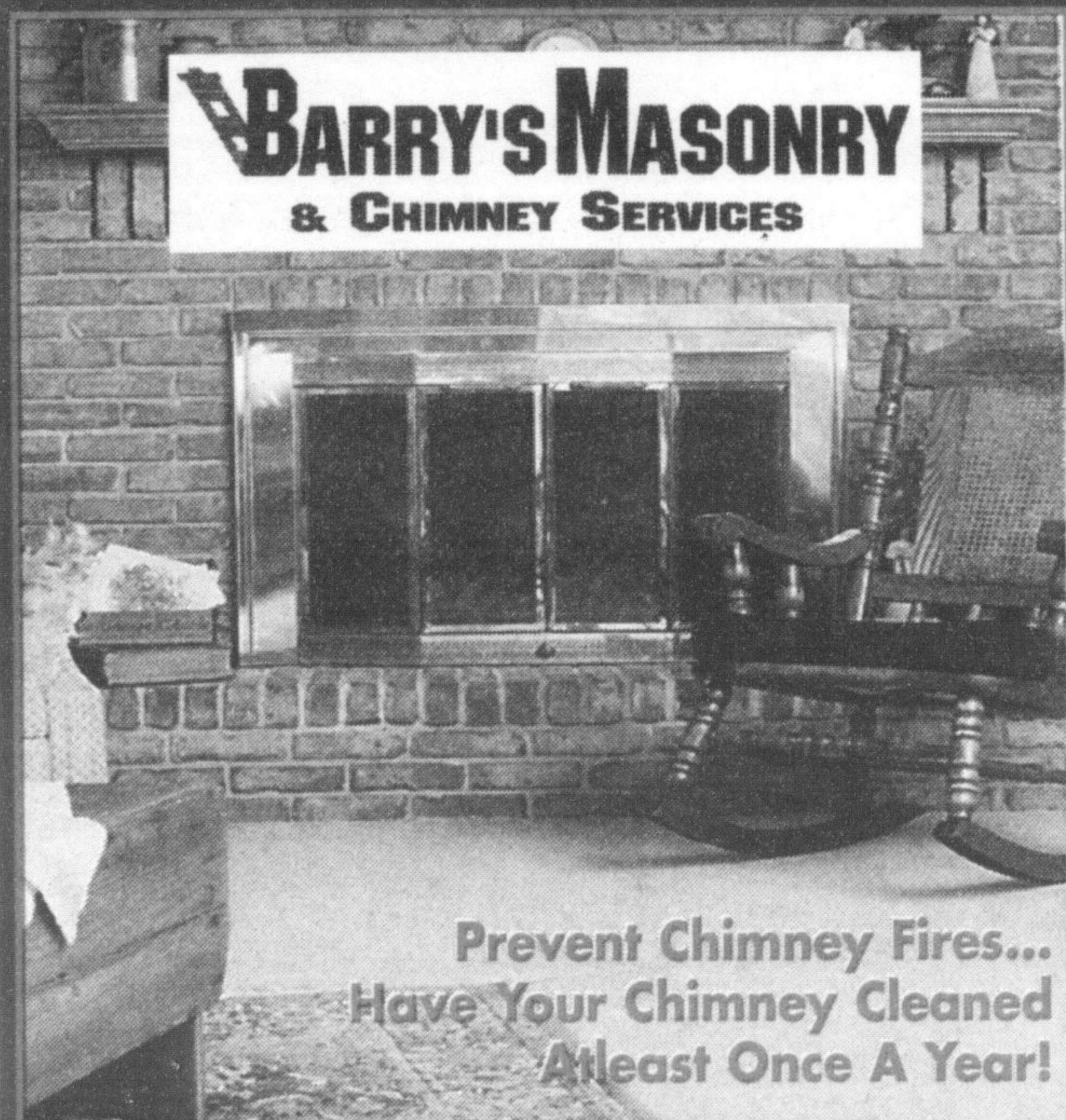
GREEN LIGHT AWARENESS WEEK

WATCH FOR THE GREEN LIGHT!

A flashing green light means that a firefighter is on the way to the fire station because there is an EMERGENCY!
BE COURTEOUS AND GIVE WAY!



BARRY'S MASONRY & CHIMNEY SERVICES



Prevent Chimney Fires...
Have Your Chimney Cleaned
Atleast Once A Year!

Tel: 416.561.4234
Tel: 905.699.7026
barrysmasonry@hotmail.com

MILTON IS A GREEN LIGHT DISTRICT!

Milton still relies heavily on the services of part-time firefighters, and since many part-time firefighters use green lights on their cars during their response to the stations, we're hoping the motoring public will start to make the "connection" between a green flashing light on a fire truck and the flashing green light on your car. We hope that providing the visual "cue" on our big red fire trucks during emergency responses, that the driving public will become more "attuned" to the need to provide some driving courtesies to our part time staff.

ARTHUR ELECTRICAL CONTRACTORS ELECTRIC

400 Morobel Drive, Unit 1, Milton, Ontario L9T 4N6
Tel: (905) 876-2519 • Fax: (905) 876-3903

FIRE SAFETY HOUSE

FIRE EXTINGUISHER • KITCHEN SYSTEMS
FIRE ALARM • SALES & SERVICE

MURRAY McCONNELL
(905) 878-8303

590 MOORELANDS CRES.
MILTON, ONTARIO L9T 4B5