

MILTON PUBLIC LIBRARY



Coming Soon! Milton's First Library Branch!

Quick Facts

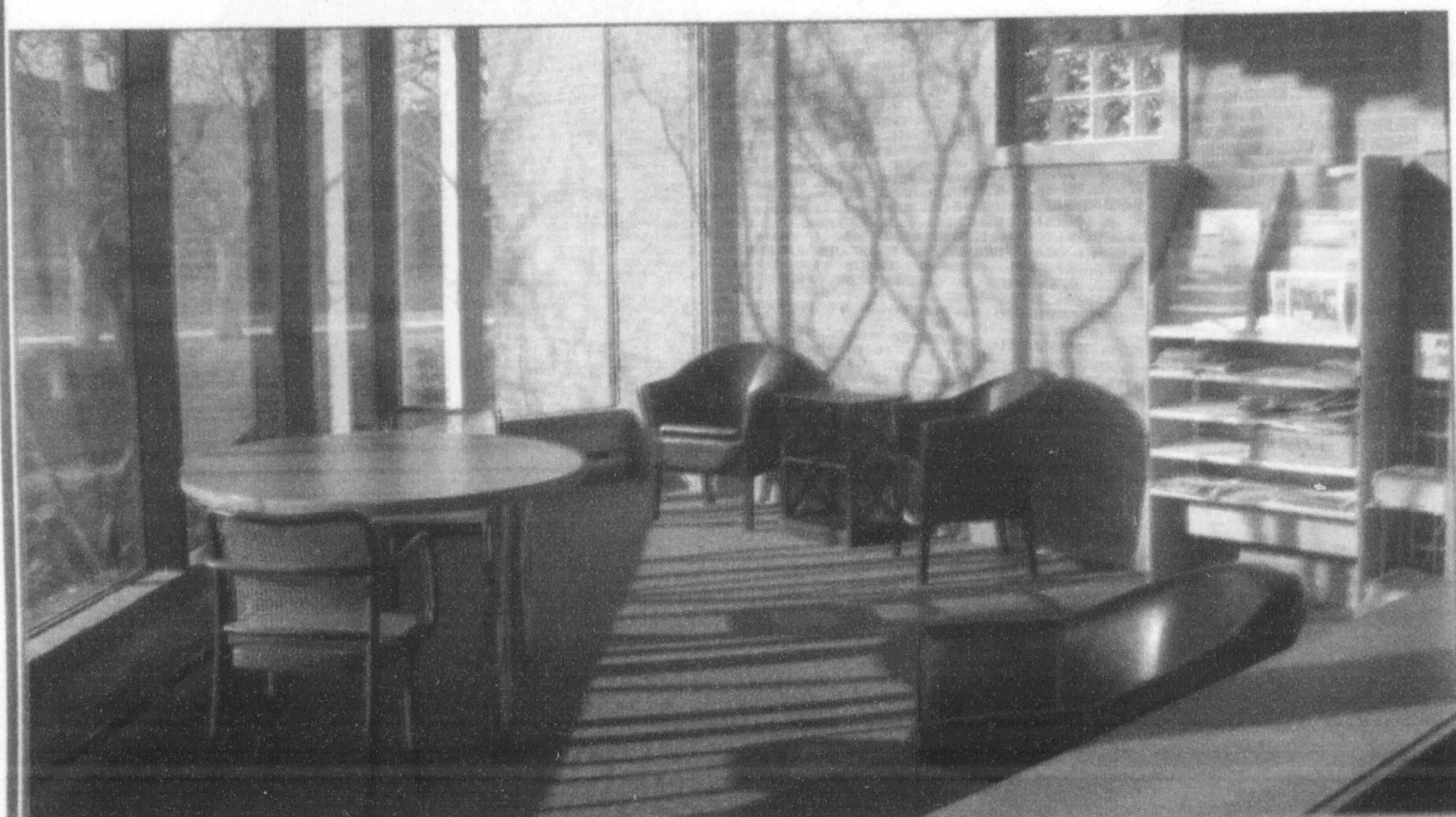
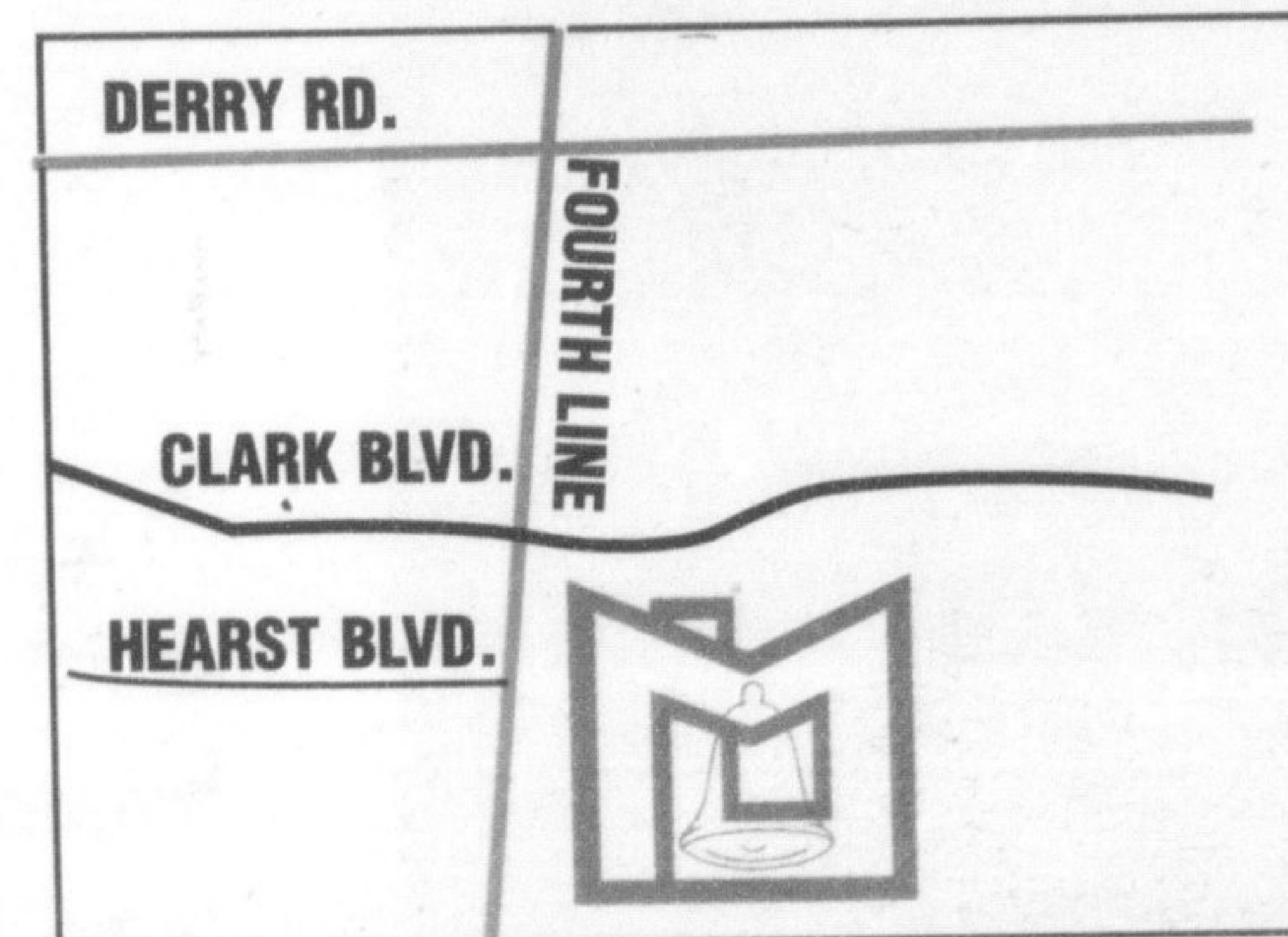
Location: East side of Fourth Line, south of Clarke Blvd. at the end of Hearst Blvd.

Timelines: Architect selection and construction in 2007 with occupancy in 2008

Size: 10,000 square feet **Collection Size:** 42,000 books, DVDs, CDs, and magazines

Features: Program room, Wireless connectivity, Children's area, Public Computers

For more information, check the Library web page www.mpl.on.ca



Reading Nook



LESLIE FITCH
Chief Librarian

At the Grand Opening celebrating the Milton Canadian Champion's new location, I was lucky enough to win this page of advertising. I knew immediately it would be best used to celebrate something 'big' for the Library. What a pleasure, then, to be able to highlight two huge steps forward in the development of Milton Public Library:

- The successful completion of our Renovation Project at Bruce Street (including the purchase of the Pine Street building for Administration and Support Services)
- The announcement of the location for Milton's first Branch Library in south east Milton.

The Milton Public Library Board and Staff are deeply pleased with both developments, and thank Milton Town Council and Staff for their continuing support.

If you haven't been to the Library in a while, come back and see us. We have much to offer in our collections, e-resources, children's programs and more to inform and entertain you.

Leslie Fitch
Chief Librarian

Did you know?

You can use your Milton Public Library card to borrow items from Burlington, Halton Hills and Oakville, along with Hamilton Public Libraries and Wellington County Library System. *(some restrictions apply.)*

How the Library was Used in 2006

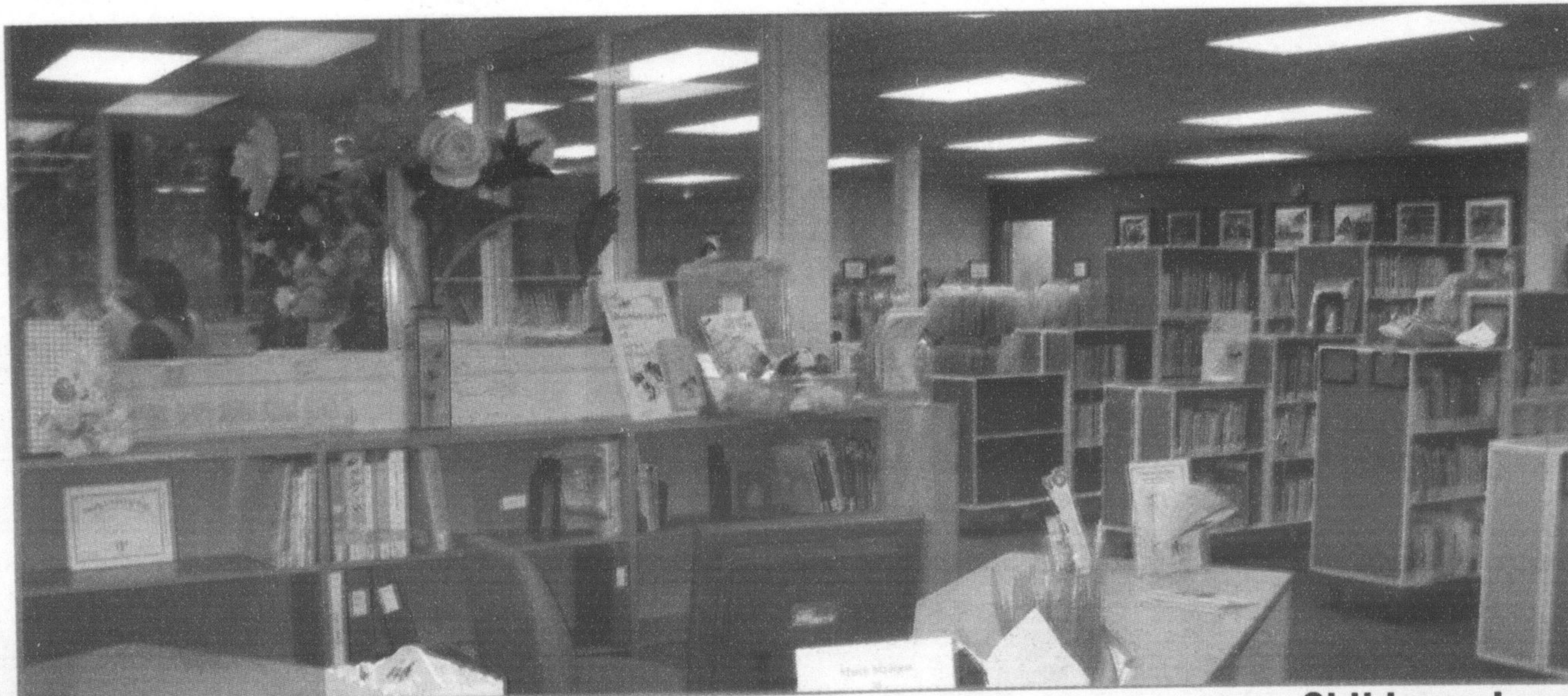
3,472	New library cards issued
210,715	People came into the Library
11,273	Children came to programs
440,645	Items that were borrowed
45,042	Questions asked & answered
56,428	Number of connections to our Web Catalogue

How the Library Changed in 2006

- Bright, welcoming and dedicated Children's Level
- "Teen Central" area established
- Expanded space for all collections
- Added more than 1,000 linear feet of shelving to the library (more than 3 football fields)
- Coffee bar in the Newspaper Nook
- Expanded spaces for reading
- 407 Pine Street now serves as the Administration Support Services offices for the Library

2007 Projects

- Downloadable e-audio book collection
- Destiny Milton II: Library Master Plan
- Library Branch - architect selection / construction to begin
- New Library Board orientation
- E-mail notification • Wireless connectivity



Childrens Level