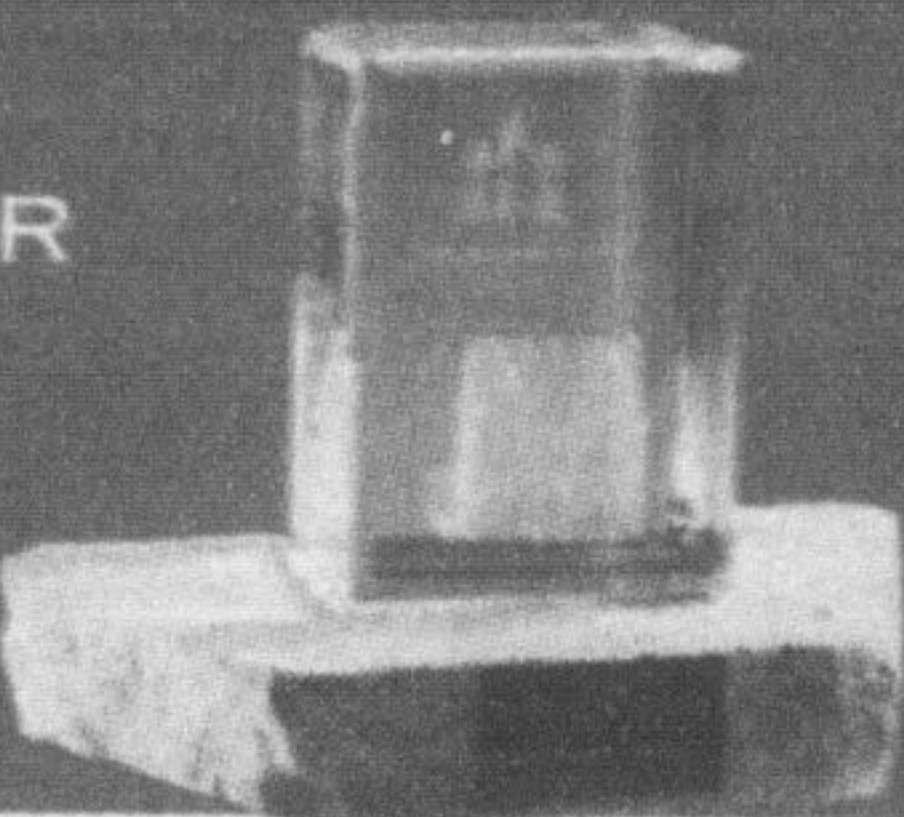




★★★★★ HIGHEST RANKING IN THE J.D. POWER AND ASSOCIATES STUDY FOR CUSTOMER SATISFACTION AMONG NEW HOME BUILDERS IN THE GTA AND 2006 ONTARIO HOME BUILDER OF THE YEAR. ★★★★★



Help Us Create A Better Home Environment
visit www.mattamygreinitiative.com
Code 6023204



The Holidays Are All About Comfort. So Is Energy Star.



MILTON'S LARGEST ENERGY STAR COMMUNITY.

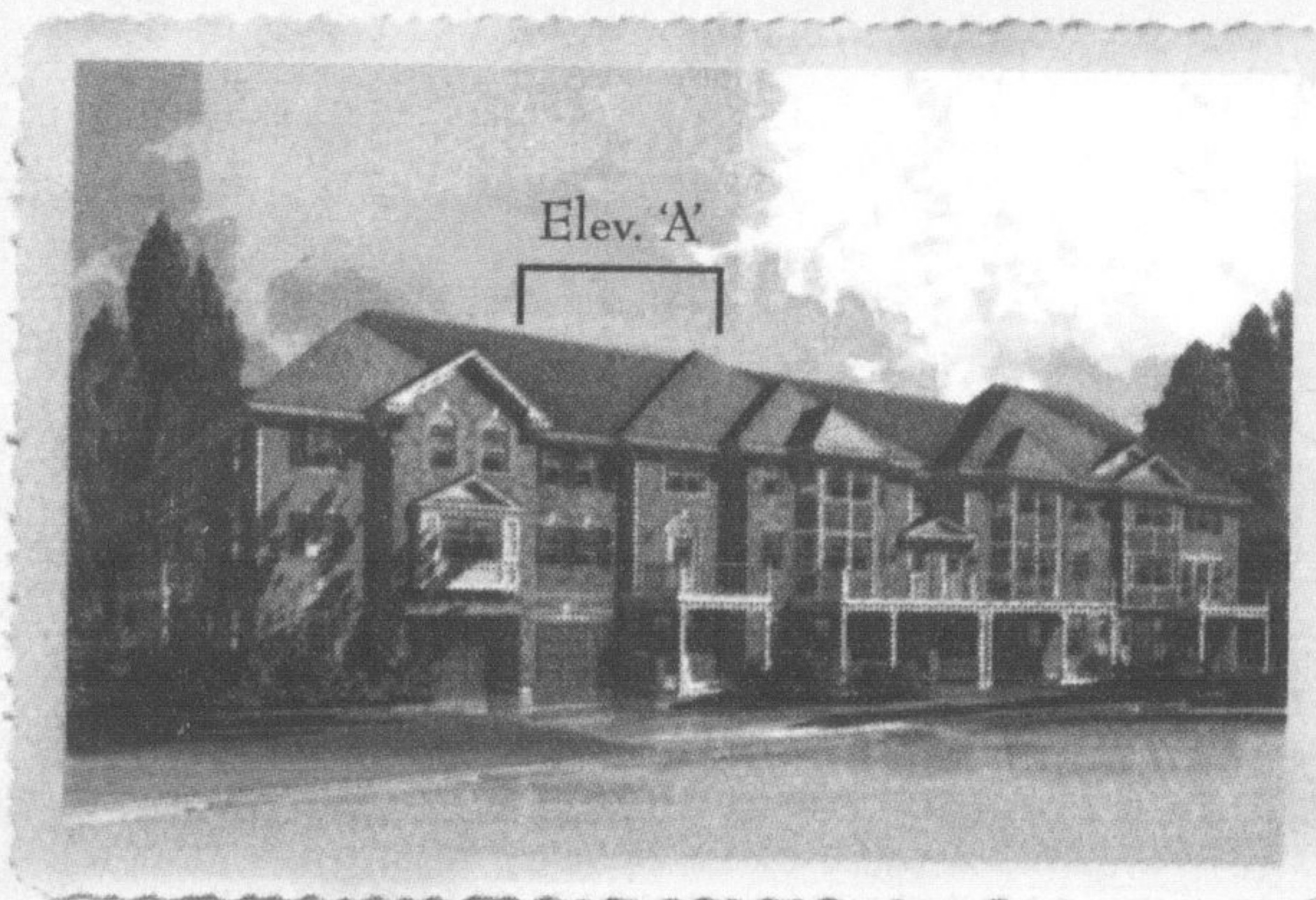
We've just added a great new neighbourhood to our Hawthorne Village community, Hawthorne Village on the Escarpment.

This brand new, totally Energy Star community sits at the foot of the Niagara Escarpment. Drive our established Hawthorne Village Community and see why over 5,000 happy families call our Hawthorne Village Communities home.

- Village Homes From \$193,990
- WideLot™ Townhomes From \$220,990
- Main Street Townhomes From \$247,990
- WideLot™ Semis From \$259,990
- 36' WideLot™ From \$294,990



Hawthorne Village Model Home



Village Home, The Ashfield 'A', 1,051 Sq.Ft., \$193,990



36' WideLot™, The Summerfield 'C', 2,121 Sq.Ft., \$360,990

www.mattamyhomes.com



"Highest in Customer Satisfaction With New Home Builders in the Greater Toronto Area"

Presentation Centre Hours:
Monday to Thursday 1pm-8pm; Friday 1pm-6pm;
Saturday, Sunday and Holidays 11am-6pm

2006 Best In Class Customer Satisfaction

Smart Designs, Friendly Communities, Satisfied Homeowners.

Mattamy Homes earned the highest customer rating in the Greater Toronto Area in the 2006 J.D. Power and Associates 2006 Canadian New Home Builder Customer Satisfaction Study. Study based on 5,333 responses from homeowners in the GTA, including 21 contractors and thousands of potential customers with their own home. Property sales figures are based on approvals and closings of contracts reviewed in March-April 2006. See www.jdpower.com for details.

The ENERGY STAR mark is administered and promoted in Canada by Natural Resources Canada.

All illustrations are artist's concept. All dimensions are approximate. Prices, specifications, terms and conditions subject to change without notice. E.O.E.