

# Bailey is back as chairman of Catholic school board

For the seventh year in a row, Burlington Trustee Al Bailey is back in the chair's seat at the Halton Catholic District School Board.

He heads into his 10th year as a trustee.

His colleagues at the board gave him the title at the board's inaugural meeting last Tuesday.

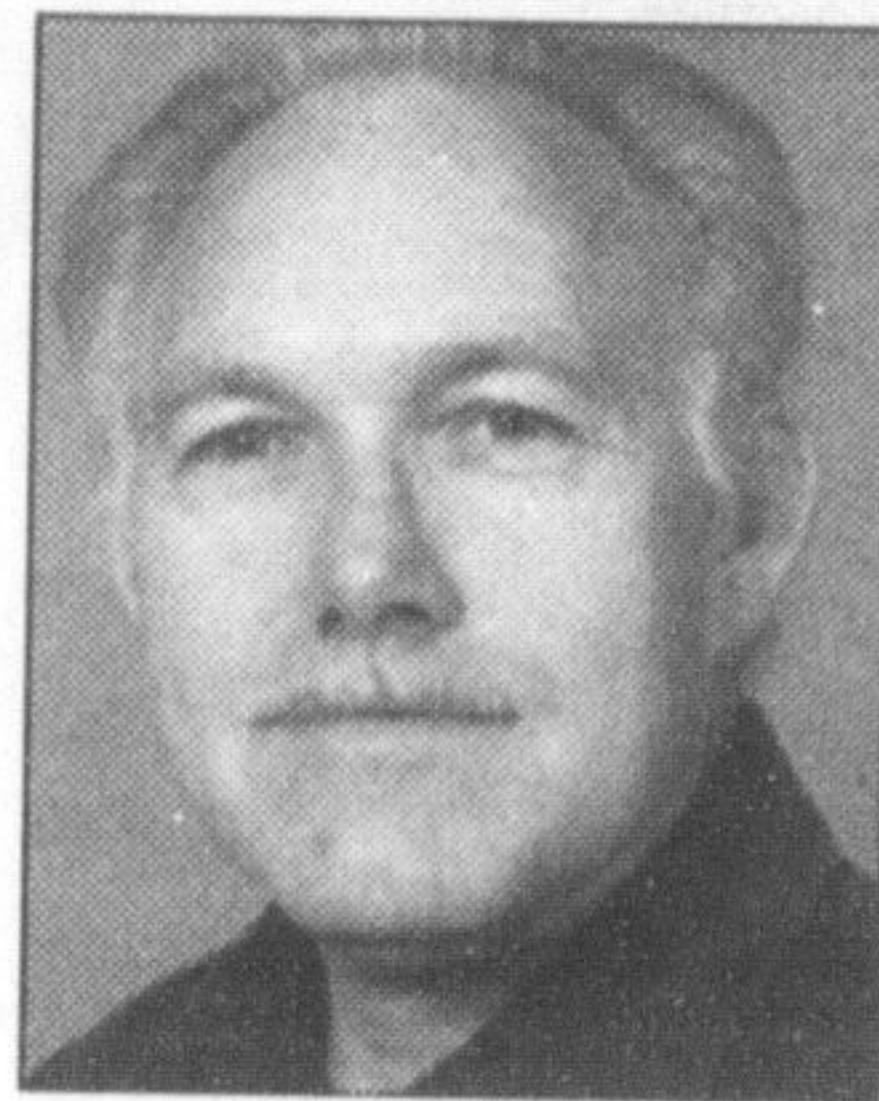
Alice Anne Lemay, an Oakville trustee and 26-year veteran of the board, was named the vice-chair, which is a post she has previously held.

They lead nine trustees, which is one more than last term, and are joined by three newcomers: Anthony Danko, Pauline Houlahan, both Oakville trustees, and Rosanna Palmieri who represents Halton

Hills. Growth in Oakville prompted the additional trustee. The board now has five representatives for Oakville, two for Burlington and one each for Halton Hills and Milton. The term of office for all trustees is now four years.

In January 2007, the board faces a vote on the school uniforms pilot at a Milton and a Burlington elementary school.

"There seems to be less support for (uniforms) in Oakville," said Danko.



Al Bailey

The board offered to let an Oakville school join the two-year experiment, but none volunteered.

As budget planning ensues, Chair Al Bailey foresees many Ontario boards, including Halton's, moving too close to a deficit. There are no reserves to take care of the increases the provincial government has imposed through negotiating teachers' contracts, he said.

"We will have to do a better job of getting funding from the government because there isn't money in other areas to take from, it's all been enveloped already," said Bailey.

Discussions will also get underway in the next year to either find a new home for the

overflowing board headquarters, renovate it or leave it as is.

The same decision must also be made for St. Thomas Aquinas High School in Oakville.

"We're a growth board, which is a good problem," said Bailey.

Pressure is also to be alleviated at crowded Notre Dame and Assumption high schools, Bailey added.

"A constant challenge over the long term for us is maintaining our Catholic identity in a secular world," added Danko. "This is the only quality that guarantees our survival as a board, so if we lose heart over that, God help us."

## Chair asks for patience

• from GEORGETOWN on page A1

"Excellence can be measured, and not by how many times we repeat the phrase. I think that the only measuring stick that really matters is how often we hear it back from our clients, from our families."

With seven new members on the 11-person board, Tuck Kutarna asked for patience from board staff and the public as the first-time trustees learn on the job.

"There are seven trustees new to the job and we will be asking a lot of questions. And there will be some new ideas coming your way."

"I have, in the past two weeks, felt inspired by my new colleagues and friends around the table by your honesty and excitement for what lies ahead. Some of you have shown great courage, put yourself on the line to heal old wounds. Others have taken the lead in building new bridges."

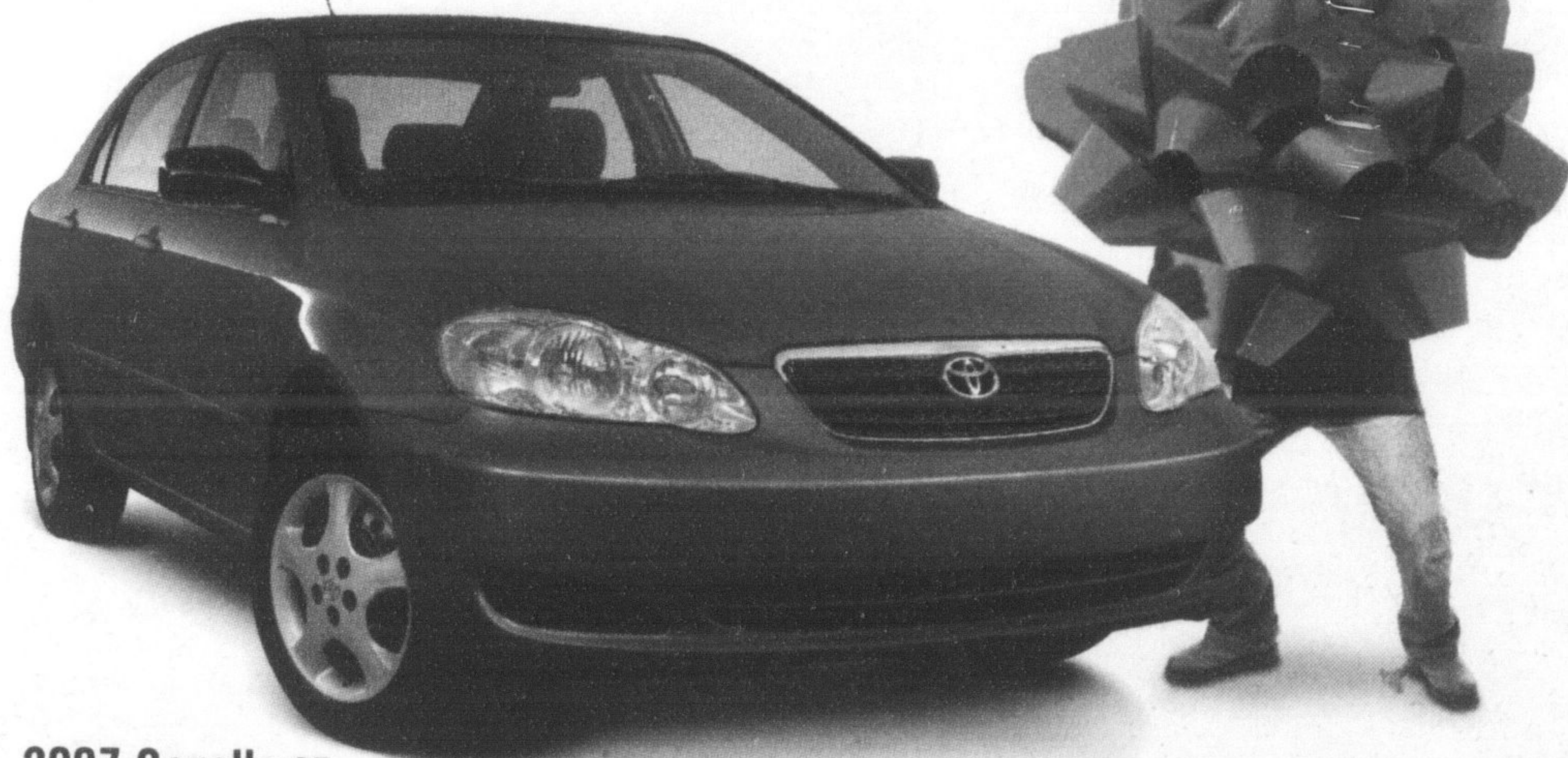
The latter remark appears to be directed at the impression by some that the previous board of trustees was split into two ideological factions. Tuck Kutarna told The Champion she doesn't believe one exists. "Quite the opposite. There is a real comfort among the trustees to work together and to move forward with a common goal."

Tuck Kutarna is carrying on a tradition of north Halton trustees as board chair. She succeeds Milton's Paul Tate. Prior to that Halton Hills' Ethel Gardiner had a long run in the position.

"She kindly called to congratulate me," Tuck Kutarna said of the ailing Gardiner.

The next meeting of the Halton District School Board will be the regularly scheduled board meeting January 17. The meeting schedule for the board is available at [www.hdsb.ca](http://www.hdsb.ca).

### MILTON TOYOTA



#### 2007 Corolla CE

LEASE FOR **\$249\*** @ **4.9%** APR  
PER MONTH FOR 48 MONTHS WITH \$1,472 DOWN  
FREIGHT AND P.D.E. INCLUDED

**\$17,795**  
MSRP\*\*

• 1.8 L, 126 hp engine • 5-speed manual transmission • A/C • AM/FM stereo CD • Power locks and mirrors • Keyless entry & more  
Add a power moonroof, power windows, aluminum alloy wheels and wheel locks for only \$16.00 more per month when you step up from a 2007 Corolla CE to the 2007 Corolla CE Special Edition.

HWY 5.3L/100 KM (53 MPG)†  
CITY 7.1L/100 KM (40 MPG)†

## 'TIS THE SEASON TO GET WHAT YOU REALLY WANT!

WRAP UP THE YEAR WITH A SHINY NEW TOYOTA!



#### 2006 Sienna CE

LEASE FOR **\$379\*** @ **2.8%** APR  
PER MONTH FOR 48 MONTHS WITH \$1,400 DOWN  
FREIGHT AND P.D.E. INCLUDED

**\$30,800**  
MSRP\*\*

• 3.3 L, 215 hp engine • 5-speed automatic transmission • ABS • A/C • Power windows, locks and heated mirrors • Dual sliding doors • Front seat, side and curtain airbags • Tilt and telescopic steering • Keyless entry & more  
† HWY 8.2L/100 KM (34 MPG)† CITY 12.4L/100 KM (23 MPG)†



#### 2007 Matrix

LEASE FOR **\$279\*** @ **4.9%** APR  
PER MONTH FOR 48 MONTHS WITH \$1,400 DOWN  
FREIGHT AND P.D.E. INCLUDED

**\$19,905**  
MSRP\*\*

• 1.8 L, 126 hp engine • 5-speed manual transmission • A/C • Power locks • Illuminated and keyless entry with hatch release • AM/FM stereo CD • 16" Aluminum alloy wheels & more  
† HWY 5.8L/100 KM (48 MPG)† CITY 7.8L/100 KM (38 MPG)†



#### The All-New 2007 Camry LE

LEASE FOR **\$349\*** @ **5.9%** APR  
PER MONTH FOR 48 MONTHS WITH \$1,701 DOWN  
FREIGHT AND P.D.E. INCLUDED

**\$25,800**  
MSRP\*\*

• 2.4 L, 158 hp engine • 5-speed automatic transmission • A/C • Power windows, locks and mirrors • Cruise control • Option electronic gauges • Keyless entry with trunk release • AM/FM stereo CD MP3, auxiliary input jack & more  
† HWY 6.5L/100 KM (42 MPG)† CITY 9.8L/100 KM (28 MPG)†



#### 2007 RAV4

LEASE FOR **\$449\*** @ **5.9%** APR  
PER MONTH FOR 48 MONTHS WITH \$1,701 DOWN  
FREIGHT AND P.D.E. INCLUDED

**\$29,300**  
MSRP\*\*

• 2.4 L, 158 hp engine • 4-speed automatic transmission • A/C • ABS with Electronic Brake Force Distribution • Active Torque Control 4WD • Power windows and locks • Keyless entry • Power remote heated mirrors • AM/FM CD with MP3 player & more  
† HWY 7.8L/100 KM (38 MPG)† CITY 10.1L/100 KM (28 MPG)†



#### 2007 Yaris CE HATCHBACK

LEASE FOR **\$189\*** @ **5.5%** APR  
PER MONTH FOR 48 MONTHS WITH \$1,100 DOWN  
FREIGHT AND P.D.E. INCLUDED

**\$13,800**  
MSRP\*\*

• 1.5 L, 106 hp VVI • engine with Electronic Throttle Control System with Intelligance (ETC-i) • 5-speed manual transmission • Power assisted brakes • Driver and passenger airbag supplemental restraint system (SRS) • Intermittent wipers • AM/FM stereo CD & more  
† HWY 5.5L/100 KM (51 MPG)† CITY 6.8L/100 KM (41 MPG)†

### MILTON TOYOTA

400 STEELES AVENUE, MILTON

Toll Free: 1-800-617-4025 Fax: (905) 875-1516  
info@miltontoyota.com  
MYTOYOTAPLACE.COM

NO SECURITY DEPOSIT ON ALL 2006 AND 2007 LEASES.

\*Leasing and financing plans from Toyota Financial Services. O.A.C. Lease offers valid on 2007 Corolla (Model BR32EMB), 2007 Corolla (Model BR32EMT), 2006 Sienna (Model BR32EMB), 2007 Camry (Model BE46KPA), 2007 Yaris (Model JY923MA) and 2007 RAV4 (Model BD33VPA). MSRP of \$17,795/\$18,855/\$30,800/\$19,905/\$25,800/\$13,800/\$29,300 at 4.9%/4.9%/2.8%/4.9%/5.9%/5.9%/5.9% for 48/48/48/48/48/48 months. Monthly payment includes \$1,140/\$1,140/\$1,390/\$1,140/\$1,240/\$1,090/\$1,390 freight and P.D.E. Down payment or trade equivalent of \$1,472/\$1,472/\$3,667/\$1,490/\$2,291/\$859/\$4,150 plus first payment due at lease inception. Security deposit waived on all 2006 and 2007 leases. Total lease obligation of \$13,424.06/\$14,157.74/\$21,859.14/\$14,882.72/\$19,042.90/\$12,199.43/\$20,902.26 and purchase option price of \$8,007.75/\$8,484.75/\$12,628.58/\$9,257.25/\$12,384.55/\$8,214.65. License, registration, insurance and taxes extra. Based Matrix (Model KR32EMB), 2007 Camry (Model BE46KPA), 2007 Yaris (Model JY923MA) and 2007 RAV4 (Model BD33VPA), is \$17,795/\$18,855/\$30,800/\$19,905/\$25,800/\$13,800/\$29,300 financed at 3.9%/3.9%/1.9%/3.9%/3.9% APR equals \$524.59/\$555.84/\$880.85/\$586.79/\$760.57/\$406.82/\$863.75 per month for 36/36/36/36/36/36 months. Cost of borrowing is \$1,090.24/\$1,155.24/\$910.60/\$1,219.44/\$1,580.52/\$845.52/\$1,795 for a total obligation of \$18,885.24/\$20,010.24/\$31,710.60/\$21,124.44/\$27,380.52/\$14,645.52/\$31,095. Freight and P.D.E. cost of \$1,140/\$1,140/\$1,390/\$1,140/\$1,240/\$1,090/\$1,390 license, registration, insurance and taxes extra. \*\*MSRP is \$17,795/\$18,855/\$30,800/\$19,905/\$25,800/\$13,800/\$29,300 for 2007 Corolla (Model BR32EMB), 2007 Corolla (Model BR32EMT), 2006 Sienna (Model BR32EMB), 2007 Camry (Model BE46KPA), 2007 Yaris (Model JY923MA) and 2007 RAV4 (Model BD33VPA). Freight and P.D.E. cost of \$1,140/\$1,140/\$1,390/\$1,140/\$1,240/\$1,090/\$1,390 license, registration, insurance and taxes extra. These are limited time offers. Dealer may sell/lease for less. See your participating Toyota Dealer for full details. †These estimates are based on the

## How do you say you're sorry for \$1 a day?



Learn this and other fresh facts:

[www.freshobsessedmilton.ca](http://www.freshobsessedmilton.ca)

Enter for your chance to "Instantly Win"™ in the A&P Milton "Even More Fresh Obsessed" Contest, and play our Grocery Cart Scratch & Match Game. To enter visit: [www.freshobsessedmilton.ca](http://www.freshobsessedmilton.ca)

Plus! You could win a \$1,000 Shopping Spree or other "Instant Win" Prizes!

\*No purchase necessary. For full rules see [www.freshobsessedmilton.ca](http://www.freshobsessedmilton.ca). Correct mathematical skill testing question required. Contest open only to legal residents of the Province of Ontario, Canada who are of the age of majority at the start of this contest. Contest closes January 19, 2007.