



We believe... in helping. Anyone. Anywhere.

PLEASE GIVE 905-875-1022

NOVEMBER TO REMEMBER

INTRODUCING THE NEW NISSAN X-TRAIL BONA VISTA EDITION



Limited Edition
BONA VISTA
Edition

\$1,000
ADDITIONAL VALUE

17" alloy wheels, Power glass Pana Roof™, Automatic Climate Control, Carbon fibre look trim, Brushed aluminum door sill plates, Heated Front Seats, Exclusive numbered 'Limited Edition', All Wheel Drive, 6-CD Changer, Unique Bonavista Edition colours

LEASE FOR
\$379 0 DOWN
/MONTH: FOR 60 MONTHS
DOWN PAYMENT OF \$1,231
\$0 SECURITY DEPOSIT
LEASE APR **3.8%**

0%
PURCHASE FINANCING
~~\$30,998~~
\$28,998

\$0 Down	\$379/Mo.
\$995	\$360/Mo.
\$1,998	\$341/Mo.

2007 NISSAN QUEST 3.5S



\$32,498
MSRP

Lease for **\$443 Mo.**
\$1,995 DOWN
Freight & PDE Included. 48 Mo. Lease

0 Down	\$489/Mo.
\$1995	\$443/Mo.
\$3995	\$397/Mo.

3.5 litre, 240 HP, V6, 5 spd auto transmission, 4 wheel disk ABS, traction control, power window, power locks, power heated mirrors, front and rear air conditioning, heated front seats, tinted windows, roof rails

2006 NISSAN PATHFINDER SE



SALE
Price ~~\$41,398~~ **\$36,398**

Lease for **\$499 Mo.**
\$1,995 DOWN
Freight & PDE Included. 48 Mo. Lease

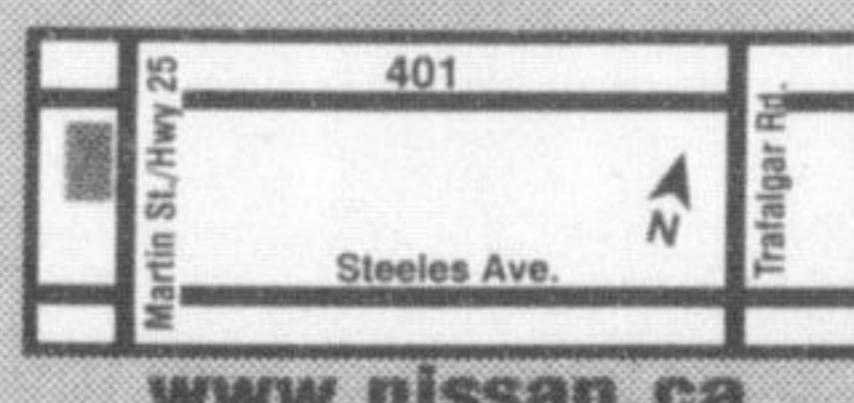
0 Down	\$545/Mo.
\$1995	\$499/Mo.
\$3995	\$455/Mo.

4.0L, V6, 270 HP, 6000 Lb. Towing Capacity, 5 Spd. Auto. Transmission, Dual Zone Climate Control, Rear A/C, 7 Pass. Seating, 6 Disc CD Changer, Power Windows, Power Locks, Power Driver Seats, Power Adjustable Pedals, Fog Lamps & More.

Milton's
NORTH END
NISSAN LTD.

610 MARTIN STREET, MILTON
905-878-4137

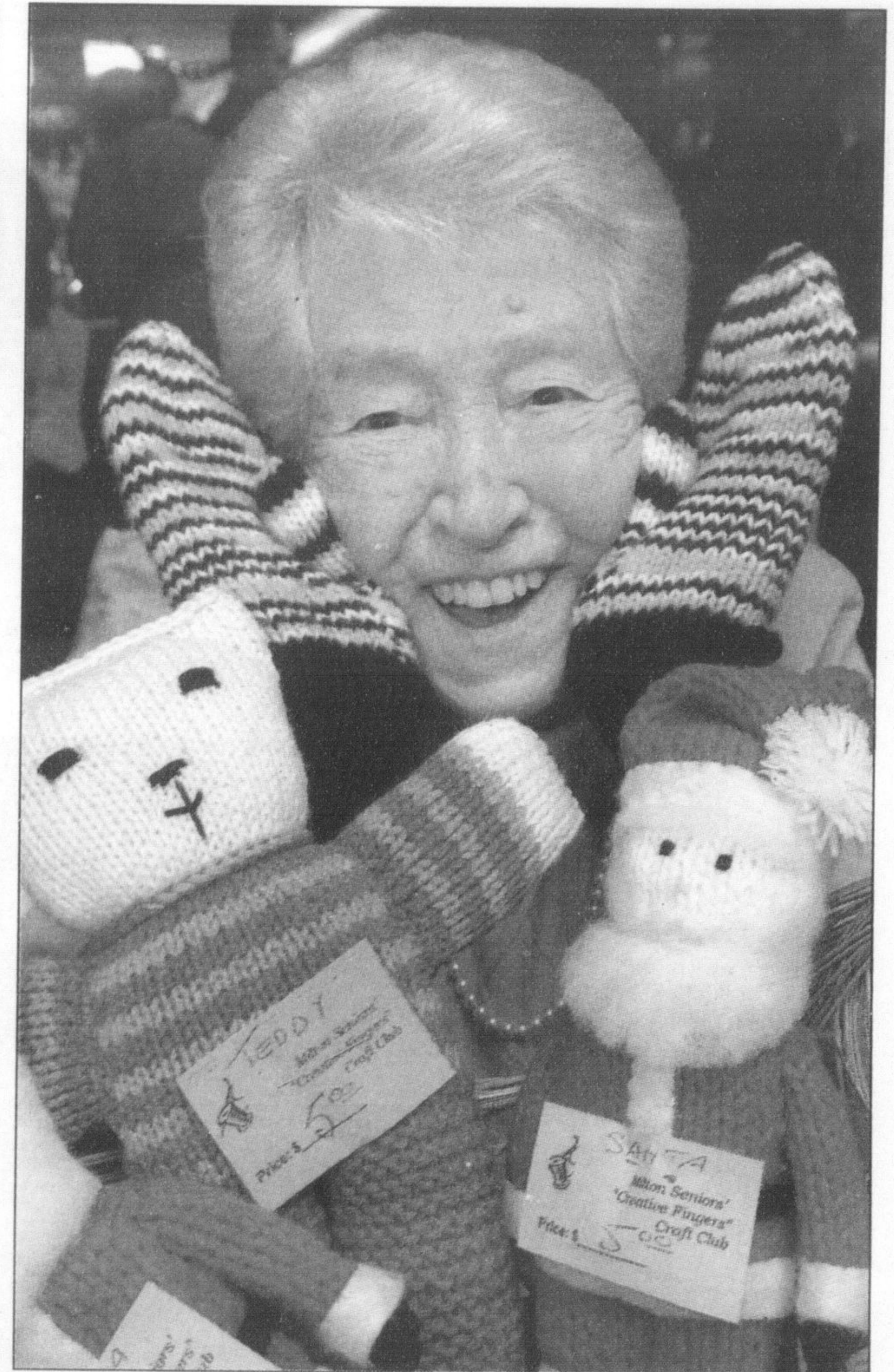
SALES DEPT. HOURS:
Mon.-Thurs. 9:00 - 9:00
Fri. 9:00 - 6:00
Sat. 9:00 - 5:00



www.nissan.ca

SHIFT

Lease offers available on new X-Trail Bonavista Y6BG76AA00, New Quest 3.5S, V6RG77AA00. Lease APR 3.8/4.55/3.8 For 60/48/48 months. X-Trail Bonavista monthly is 379/360/341. Total lease obligation is 22,740/22,598/22,458. New Quest 2.5S monthly is 489/443/397. Total lease obligation is 23,472/23,262/23,054. Pathfinder SE monthly is 545/499/455. Total lease obligation is 26,160/25,950/25,838. Lease prices include freight and PDE of \$1,350/1,440/1,507. New Pathfinder SE SC5G76AA00. Lease APR 60/48/48 months. Total lease obligation is \$575/\$529/\$483 total lease obligation is \$27,600/\$27,387/\$27,179. Lease prices include freight and PDE of \$1,190/\$1,333/\$1,307. First monthly payment, \$0 security deposit, license, insurance, registration fee, PPSA of \$60/\$52/\$52 + taxes due at lease inception. Leases based on maximum of 24,000 km/year. Excess charge 10¢/km. 160,000 km warranty on engine only. MSRP may not reflect normal selling price.



GRAHAM PAINE / CANADIAN CHAMPION

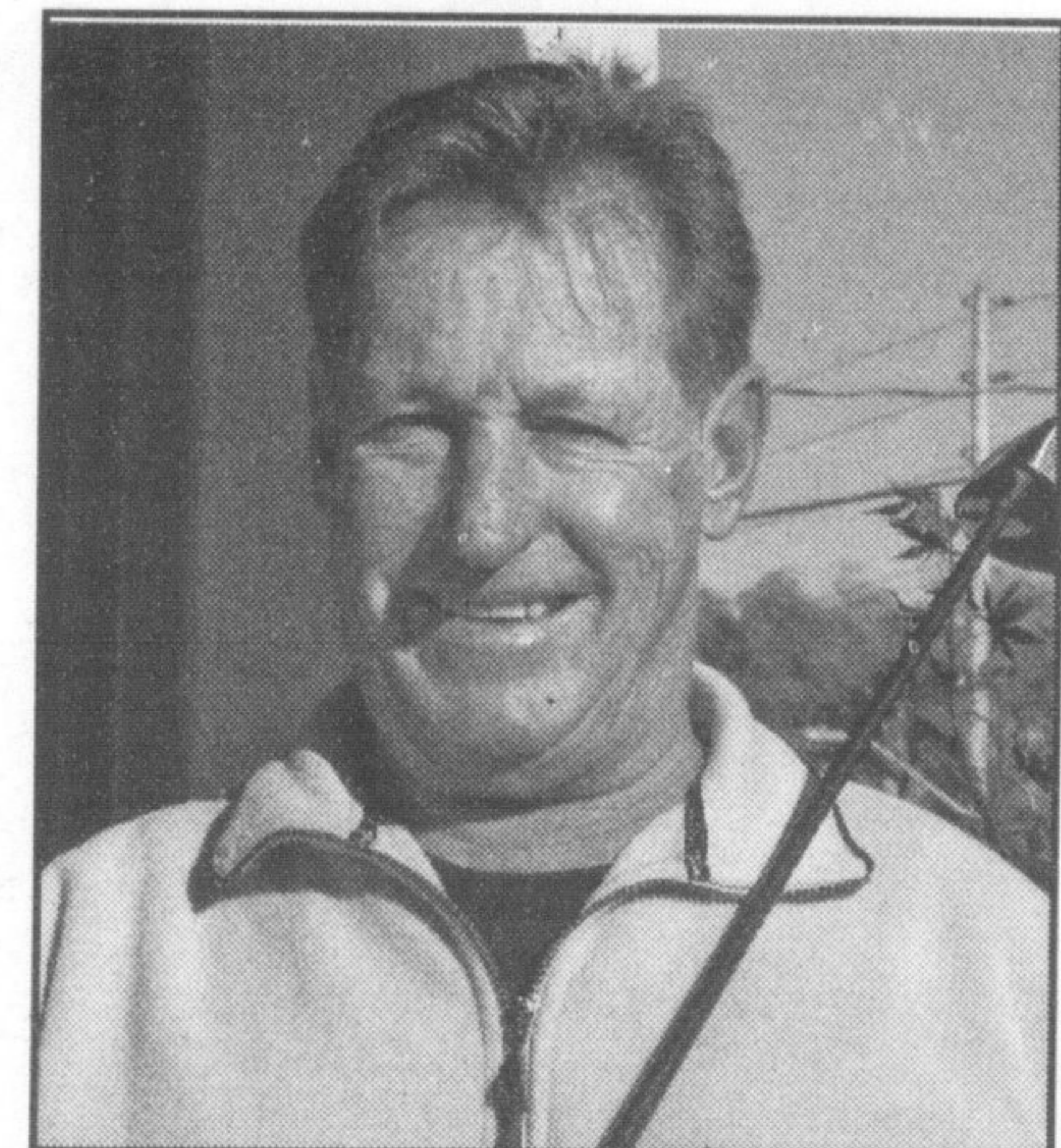
KNITTING NUT: Vera Riley — who's 89 and still knitting — holds up a pair of mitts between a knitted teddy bear and Santa at the Creative Fingers Craft Club table. All made by seniors, the knitted crafts were part of Saturday's Community Bazaar at Milton Mall.

"The business that considers itself immune to the necessity for advertising sooner or later finds itself immune to business."

Derby Brown

Golf Season Is Over.

Dr. James Barrow,
Chiropractor



WINTER HOURS:

Tuesday & Thursday

7:00am - 12:00 pm & 3:00pm - 6:00 pm

Saturday

10:00 am - 11:30am

905-878-8127