

OUR HISTORICAL YEAR END SALES EVENT

ON NOW.

GORRUD'S AUTO

Showing Our Customers The Difference Since 1960

DARE TO COMPARE

GREAT DEALS + PEACE OF MIND = GORRUDS AUTO GROUP

30 DAY EXCHANGE PROGRAM
In case you change your mind

7 DAY VALUE GUARANTEE

CarProof VERIFIED

Peace of mind purchase with the most comprehensive vehicle history report

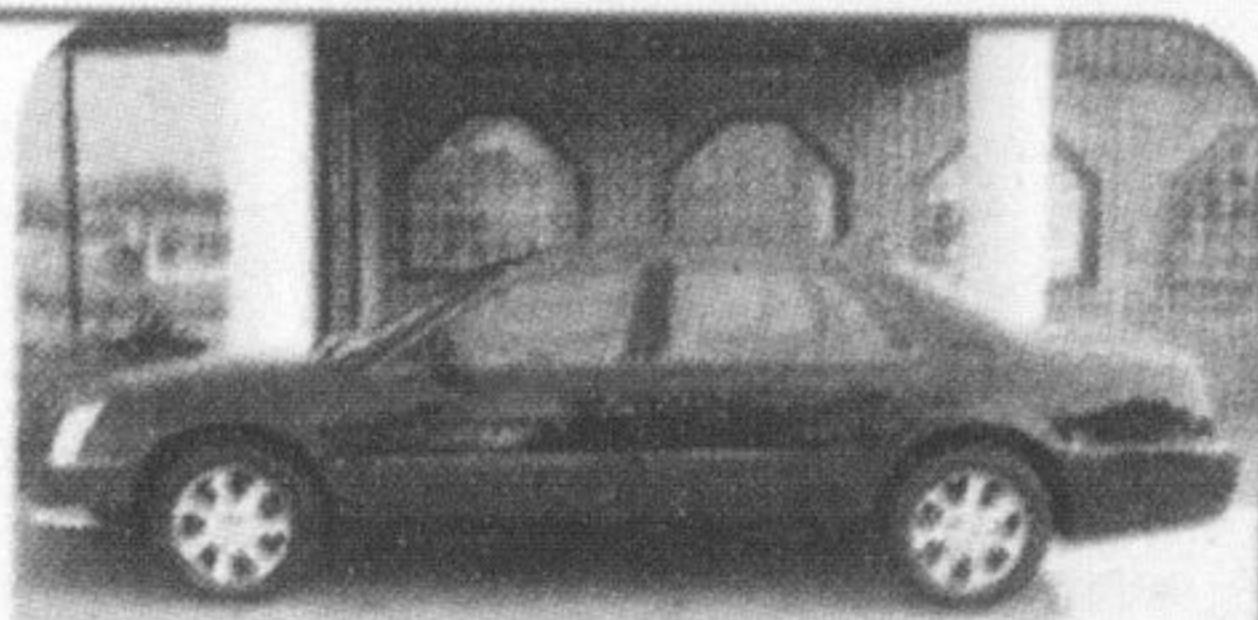
30 DAY MECHANICAL WARRANTY

6 MONTH/10,000KM POWERTRAIN WARRANTY

2006 Cadillac DTS
Luxury II

\$34,932

\$4,000 Down - \$339 Bi-Weekly
Stk. #176134



2006 Buick Rendezvous
CXL AWD 7 Pass.

\$23,958

\$3,000 Down - \$229 Bi-Weekly
Stk. #595146



2002 Hyundai
Santa Fe GL

\$8,990

\$500 Down - \$94 Bi-Weekly
Stk. #246574



HUNDREDS TO CHOOSE FROM!

COMPACTS

	km	stock no.	price
2006 Chev Cobalt	15,378	773819	\$13,890
2006 Chev Cobalt	17,375	771318	\$15,925
2006 Chev HHR LS	46,944	511393	\$15,950
2006 Pontiac G6 V6	23,987	243035	\$18,990
2006 Pontiac Pursuit	13,635	783316	\$13,950
2006 Pontiac Pursuit SE	14,914	781723	\$15,925
2006 Toyota Corolla CE "C"	12,713	584689	\$17,990
2006 Toyota Corolla CE "C"	15,366	584091	\$17,790
2006 Toyota Corolla CE "C"	16,933	585221	\$17,790
2006 Toyota Corolla CE "C"	23,703	585528	\$17,590
2006 Toyota Matrix "B"	23,710	570143	\$18,595
2006 Toyota Matrix "B"	18,525	577903	\$18,790
2006 Toyota Matrix "B"	30,317	581906	\$18,495
2006 Toyota Yaris LE	30,888	023960	\$14,850
2005 Toyota Corolla CE "C"	102,365	848013	\$12,880
2005 Toyota Echo Sedan	39,739	381797	\$12,395
2005 Toyota Echo Hatchback	23,856	086797	\$13,990
2005 Toyota Matrix XR AWD	46,678	885186	\$21,495
2004 Ford Focus ZX5	60,288	115518	\$12,575
2004 Toyota Matrix "B"	49,548	835295	\$16,460
2004 Toyota Matrix "B"	38,113	815806	\$16,660
2003 Dodge Neon SXT Sport	77,920	133031	\$10,595
2003 Ford Focus SE	80,140	166061	\$9,795
2003 Ford Focus ZTS	46,072	238952	\$12,950
2003 Mazda Protégé 5 ES	66,109	186649	\$13,950
2003 Olds Alero GX	32,288	208915	\$10,795

LUXURY & MIDSIZE

	km	stock no.	price
2007 Toyota Camry LE "B"	26,598	015968	\$24,570
2006 Buick Allure CX	21,206	238246	\$20,950
2006 Buick Lucerne SXL V6	21,961	169670	\$26,873
2006 Cadillac DTS Luxury Pkg.	26,170	167503	\$36,890
2006 Cadillac DTS	31,238	176134	\$34,932
2006 Cadillac DTS Luxury Pkg.	47,645	108310	\$31,780

2006 Chev Impala LS	32,202	301362	\$17,950
2006 Cadillac DTS Luxury II	19,950	167947	\$39,495
2006 Chev Impala LT	21,081	311273	\$19,925
2006 Chev Impala LT	23,264	305424	\$20,925
2006 Ford Taurus SE	31,896	190883	\$14,995
2006 Hyundai Sonata GL	28,453	161250	\$16,750
2006 Mercury Grand Marquis LS	31,682	620517	\$20,795
2006 Lincoln Town Car Signature	20,083	634189	\$30,850
2006 Mercury Grand Marquis LS	19,335	632020	\$20,795
2006 Nissan Maxima SE 3.5	36,952	800412	\$25,995
2005 Pontiac Grand Prix GXP	59,694	320573	\$24,995
2005 Buick allure CX	73,656	247833	\$14,950
2005 Ford Taurus SE	55,926	266938	\$13,490
2004 Honda Accord EX-L	48,315	804156	\$22,950
2004 Mercury Marquis LS	65,634	624225	\$16,850
2004 Toyota Camry LE	82,793	261449	\$16,950
2003 Toyota Camry SE	75,531	191495	\$16,950
2003 Buick Century LTD	86,405	175449	\$11,595
2003 Cadillac Deville	55,786	121747	\$25,950
2003 Honda Accord EX-L	125,801	802836	\$16,950
2003 Nissan Altima SL 2.5	98,252	115167	\$15,695
2003 Nissan Maxima SE	93,572	416757	\$16,595
2003 Pontiac Grand Am SE	64,835	235458	\$9,995
2002 Chev Malibu	60,846	666140	\$10,795
2002 Pontiac Grand Prix GT	53,190	293149	\$12,895
2002 Hyundai Sonata	85,492	709086	\$10,895
2002 Chrysler Sebring LX	59,315	284821	\$11,595
2001 Chrysler Sebring LX	40,167	714176	\$10,295
2000 Honda Accord Spec. Ed.	80,223	807976	\$13,990
2000 Buick Lesabre	96,017	123120	\$10,990
1999 Lincoln Town Car "Cartier"	96,436	620809	\$13,495

SUVs

	km	stock no.	price
2007 Cadillac Escalade ESV AWD	15,941	153181	\$63,980
2006 Buick Rendezvous CXL AWD 7 Pass.	26,273	595146	\$23,953

2006 Cadillac Escalade ESV AWD	7,147	231830	\$52,880
2006 Cadillac Escalade ESV w/Nav. 7,997	233030		\$51,880
2006 Chev Trailblazer Ext. LS 4x4	35,828	127987	\$24,850
2006 Chev Trailblazer LS 4x4	30,924	249367	\$22,550
2006 Chev Trailblazer Ext LS 4x4	25,379	166528	\$23,950
2006 Chev Uplander LT Ext.	26,617	161917	\$19,495
2006 Ford Explorer XLT	33,701	B10265	\$23,995
2006 Ford Escape Ltd. 4x4	35,970	034464	\$22,995
2006 GMC Yukon 4x4	53,252	109531	\$27,950
2006 Toyota 4Runner Sport SR5 "B"	39,645	057839	\$36,950
2006 Toyota Highlander AWD	39,200	145627	\$31,950
2005 Chev Equinox	70,687	010420	\$16,990
2005 Hyundai Santa Fe GLS V6	28,991	958104	\$20,695
2005 Nissan X-Trail LE AWD 4x4	62,799	104083	\$24,990
2005 Nissan X-Trail LE AWD	61,107	101838	\$23,980
2005 Saturn Relay Ext. w/DVD	23,712	245648	\$19,950
2005 Toyota Rav4 AWD	36,293	34646	\$23,380
2004 Buick Rendezvous CX	63,062	547113	\$17,890
2004 Chev Trailblazer Ext. LT 4x4	46,260	201344	\$24,950
2004 GMC Envoy XL SLE 4x4	62,324	208039	\$21,950
2004 Lincoln Navigator Ultimate	86,674	J35532	\$31,950
2003 Cadillac Escalade	79,876	294270	\$30,950
2003 Ford Escape LTD	67,328	E06344	\$17,950
2003 GMC Envoy SLE	98,257	157749	\$15,950
2003 GMC Yukon Denali XL 4x4	94,414	120119	\$26,995
2003 Jeep Liberty LTD 4x4	101,023	574993	\$15,950
2003 Honda CRV LX AWD	163,757	803584	\$12,995
2003 Toyota 4Runner SR5	77,380	001090	\$25,880
2003 Toyota Highlander "B"	57,266	152766	\$23,895
2003 Toyota Highlander AWD	94,143	119541	\$23,695
2002 Buick Rendezvous CX AWD	109,652	503686	\$13,950
2002 Toyota Highlander "B"	99,406	094912	\$19,590
2002 Hyundai Santa Fe GL	101,427	246574	\$8,990

PICK-UPS

	km	stock no.	price
2007 Chev Avalanche LT2 4x4	1,046	117690	\$39,868
2004 Chev Avalanche	80,870	165384	\$26,495
2004 Dodge Ram 1500 SLT	50,771	625617	\$21,950
2004 GMC Sierra X-Cab	58,869	239662	\$18,895
2004 Ford F-150 Lariat Crew Cab 4x4	43,532	D33911	\$28,950
2004 Ford F-150 XLT Crew Cab 4x4	44,678	D44460	\$24,750
2002 Mazda B-Series Reg. Cab	79,249	M22264	\$11,995
2002 Dodge Dakota Quad Cab Sport	151,872	518534	\$10,950

MINI VANS

	km	stock no.	price
2006 Toyota Sienna CE 8 Pass.	38,993	402423	\$26,950
2006 Toyota Sienna LE	45,447	410170	\$29,950
2006 Toyota Sienna LE	27,845	480401	\$26,870
2006 Toyota Sienna LE	22,721	481317	\$27,990
2005 Pontiac Montana Ext.	75,814	118982	\$14,990
2004 Chev Ventura	77,281	152530	\$11,690
2004 Chev Venture	102,864	206416	\$9,795
2004 Dodge Caravan Sport	161,028	301047	\$8,695
2004 Toyota Sienna CE	79,319	052879	\$22,595
2004 Toyota Sienna CE	34,370	163871	\$24,595
2004 Toyota Sienna LE	80,706	057726	\$23,950
2003 Chevrolet Venture	59,176	108013	\$11,995
2003 Ford Windstar Sport	95,479	A63362	\$10,990
2003 Ford Windstar Sport	70,227	B35397	\$12,850
2003 Pontiac Montana X-TD	95,167	139178	\$11,495
2002 Chevrolet Venture	73,204	295431	\$9,995
2002 Chevrolet Venture	79,178	269055	\$10,875
2002 Chevrolet Venture	62,917	229557	\$9,990
2002 Dodge Caravan SE	79,830	710079	\$10,950
2001 Honda Odyssey EX	104,547	009221	\$15,890

CONVERTIBLES

	km	stock no.	price
2003 Chrysler Sebring LSI	97,205	526597	\$14,895
2003 Toyota Solara SLE	133,595	885438	\$17,950
1999 Chevrolet Camaro	112,232	134543	\$16,990

OAC. Bi weekly payments are over 60 months at an APR of 7.99%. Other terms and rates available. See dealer for details.

GORRUD'S AUTO GROUP

1-800-731-6580
410 STEELES AVENUE
www.gorrudsautogroup.com

DON'T MISS OUR BIG ANNUAL SALE!