

IT'S 2007. AND THE ROAD HAS NEVER LOOKED BETTER.

Now is the time to get actively involved in a new Mazda. Visit your dealer today and experience the soul of a sports car in every vehicle we build.

★★★★★
HIGHEST CRASH TEST RATING POSSIBLE*



GT model shown

zoom-ZOOM

The all-new CX-7 crosses versatile 5-passenger design with sport performance in an extraordinary way. Complementing the cutting-edge exterior are a sport-bred chassis and a **turbocharged engine** that kicks out **244-horsepower**. Nothing like it has ever crossed your path.

STARTING FROM
\$33,995** MSRP

- WITH - **3.9%**

PURCHASE FINANCING FOR 36 MONTHS
AVAILABLE ON ANY NEW 2007 CX-7†

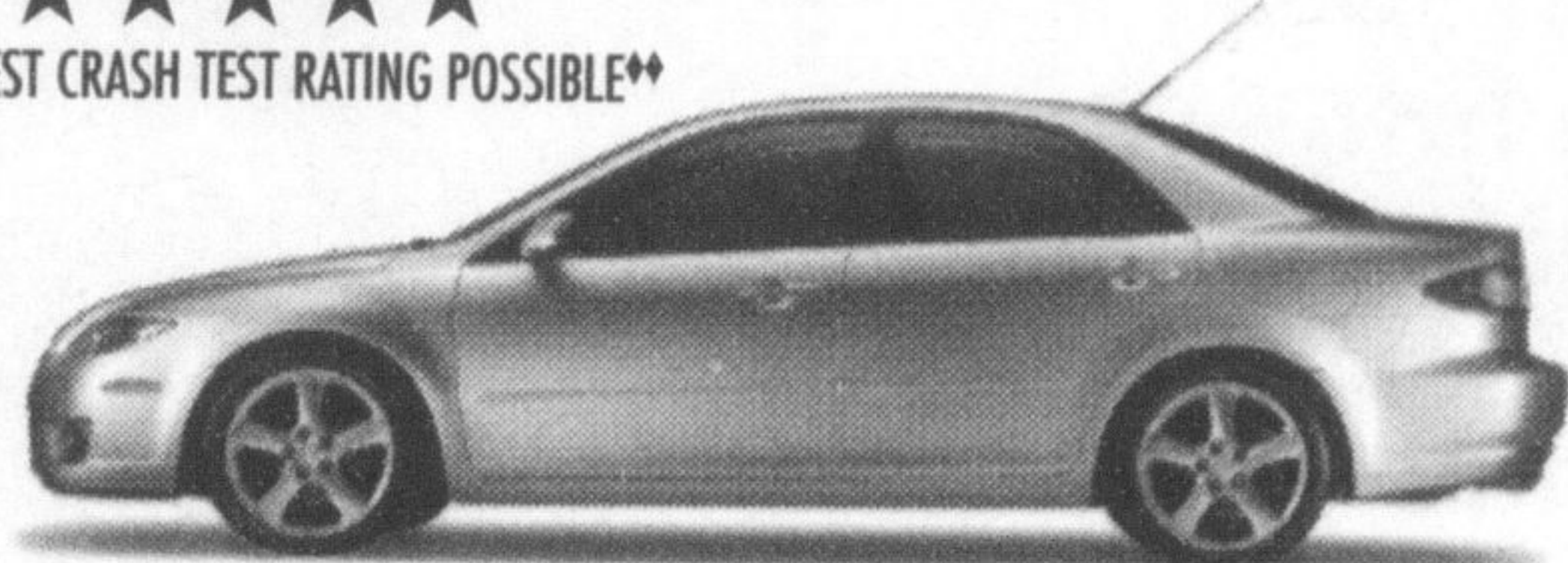
2007 MAZDA CX-7 GS AWD

LEASE FROM
\$399* - AT - **4.9%** LEASE APR

PER MONTH/48 MONTHS
WITH \$3,495 DOWN PAYMENT

NO SECURITY DEPOSIT
LEASE PAYMENT INCLUDES FREIGHT AND P.D.E.

★★★★★
HIGHEST CRASH TEST RATING POSSIBLE**



GS-V6 with Sport package model shown

2007 MAZDA6 SEDAN GS-I4
SPORT PACKAGE/5-SPEED AUTOMATIC TRANSMISSION

STARTING FROM \$26,395** MSRP

- WITH - **3.9%**

PURCHASE FINANCING FOR 72 MONTHS††

- OR -

LEASE FROM
\$289* - AT - **2.9%** LEASE APR

PER MONTH/48 MONTHS
WITH \$3,295 DOWN PAYMENT

NO SECURITY DEPOSIT
LEASE PAYMENT INCLUDES FREIGHT AND P.D.E.



GT-V6 model shown

2007 MAZDA6 SPORT HATCHBACK GS-I4
5-SPEED AUTOMATIC TRANSMISSION

STARTING FROM \$27,395** MSRP

- WITH - **3.9%**

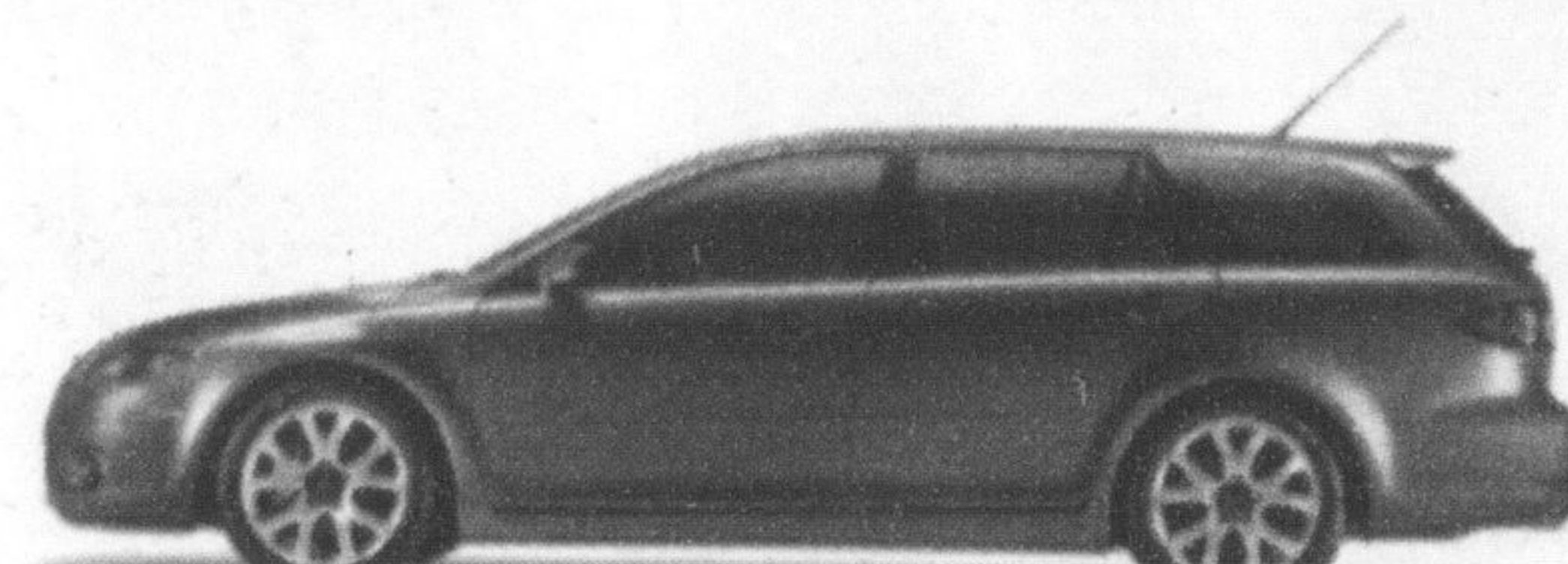
PURCHASE FINANCING FOR 72 MONTHS††

- OR -

LEASE FROM
\$299* - AT - **2.9%** LEASE APR

PER MONTH/48 MONTHS
WITH \$3,495 DOWN PAYMENT

NO SECURITY DEPOSIT
LEASE PAYMENT INCLUDES FREIGHT AND P.D.E.



GT-V6 with Performance package model shown

2007 MAZDA6 SPORT WAGON GS-V6
6-SPEED AUTOMATIC TRANSMISSION

STARTING FROM \$29,095** MSRP

- WITH - **3.9%**

PURCHASE FINANCING FOR 72 MONTHS††

- OR -

LEASE FROM
\$299* - AT - **2.9%** LEASE APR

PER MONTH/48 MONTHS
WITH \$3,995 DOWN PAYMENT

NO SECURITY DEPOSIT
LEASE PAYMENT INCLUDES FREIGHT AND P.D.E.



mazda

EXPERIENCE **EMOTION IN MOTION** AT YOUR LOCAL MAZDA DEALER.

To locate a dealer near you, visit www.mazda.ca or call 1-800-263-4680.

READY TO ROLL OUR PRE-DELIVERY COMMITMENT MEANS EVERY NEW MAZDA IS CHECKED OUT, GASSED UP AND FITTED WITH FLOOR MATS. • ASK ABOUT OUR OUTSTANDING COMPREHENSIVE AND POWERTRAIN WARRANTY COVERAGE. ASK ABOUT OUR LOYALTY OFFERS FOR EXISTING MAZDA CUSTOMERS. GRADUATES GET AN ADDITIONAL CASH AWARD OF UP TO \$1,000 TOWARDS A PURCHASE OR LEASE.

† 3.9% APR Purchase Financing 36 months is available on all new 2007 Mazda CX-7 - Based on a representative agreement using an MSRP of \$33,995 for the 2007 CX-7 with a financed amount of \$30,000, the cost of borrowing for a 36-month term is \$1,838, monthly payment is \$884.39, total obligation is \$31,838. †† 3.9% APR Purchase Financing 72 months is available on all new 2007 Mazda6, 2007 Mazda6 Sport hatchback and 2007 Mazda6 Sport Wagon - Based on a representative agreement using an MSRP of \$27,395 for the 2007 Mazda6 Sport hatchback with a financed amount of \$25,000, the cost of borrowing for a 72-month term is \$3,079, monthly payment is \$390, total obligation is \$28,079. Down payment may be required. \$1,275 freight and P.D.E. for all Mazda6 models, \$1,390 for all CX-7 models, \$65 PPSA, licence, insurance, taxes and other dealer charges are extra. **Starting MSRP available on new 2007 CX-7 GS AWD (PKS187AA00)/Mazda6 GS-I4 (G4SD87A000)/Mazda6 Sport hatchback GS-I4 (G5SD87AA00)/Mazda6 Sport Wagon GS-V6 (G6S287AA00) is \$33,995/\$26,395/\$27,395/\$29,095. As shown, price for 2007 CX-7 GT (PVT187AA00)/Mazda6 GS-V6 (G4S257AA00)/Mazda6 Sport hatchback GT-V6 (G5T257AA00)/Mazda6 Sport Wagon GT-V6 (G6T257AA00) is \$35,195/\$27,095/\$33,795/\$33,995. Excludes \$1,275 freight and P.D.E. for all Mazda6 models and \$1,390 for all CX-7 models. *Offers available on retail leases of new 2007 CX-7 GS AWD, 2007 Mazda6 GS-I4, 2007 Mazda6 Sport hatchback GS-I4 and 2007 Mazda6 Sport Wagon GS-V6. Total lease obligation for the 2007 Mazda CX-7 GS AWD (PKS187AA00) is \$22,647, including down payment of \$3,495. Total lease obligation for the 2007 Mazda6 Sport Wagon (G6S287AA00) is \$18,347, including down payment of \$3,995. For other models see your dealer for details. Lease payment includes freight and P.D.E. of \$1,275 for all Mazda6 models and \$1,390 for all CX-7 models. PPSA registration fee of \$45.80 for a 48-month term extra. Don't even think about a security deposit. It'd just mean more paperwork for us. And besides: we like you. 20,000 km per year mileage allowance applies; if exceeded, additional 12¢ per km applies. 25,000 km leases also available. Licence, insurance, taxes and other dealer charges extra. Dealer may sell/lease for less. Limited quantities available. Dealer order or trade may be necessary on certain vehicles. Offers available from November 1, 2006 for a limited time only. Lease and Finance on approved credit for qualified customers only. See your dealer for details. ♦ Awarded to the 2007 Mazda CX-7 for front driver, front passenger, side front and rear seat impact protection by the U.S. Government National Highway Traffic and Safety Administration (NHTSA). ♦♦ Awarded to the 2007 Mazda6 for front driver, front passenger impact protection and roll over. 4-star rating for side front and rear seat impact protections by the U.S. Government National Highway Traffic and Safety Administration (NHTSA).

MAZDA
GRADUATE
PROGRAM

