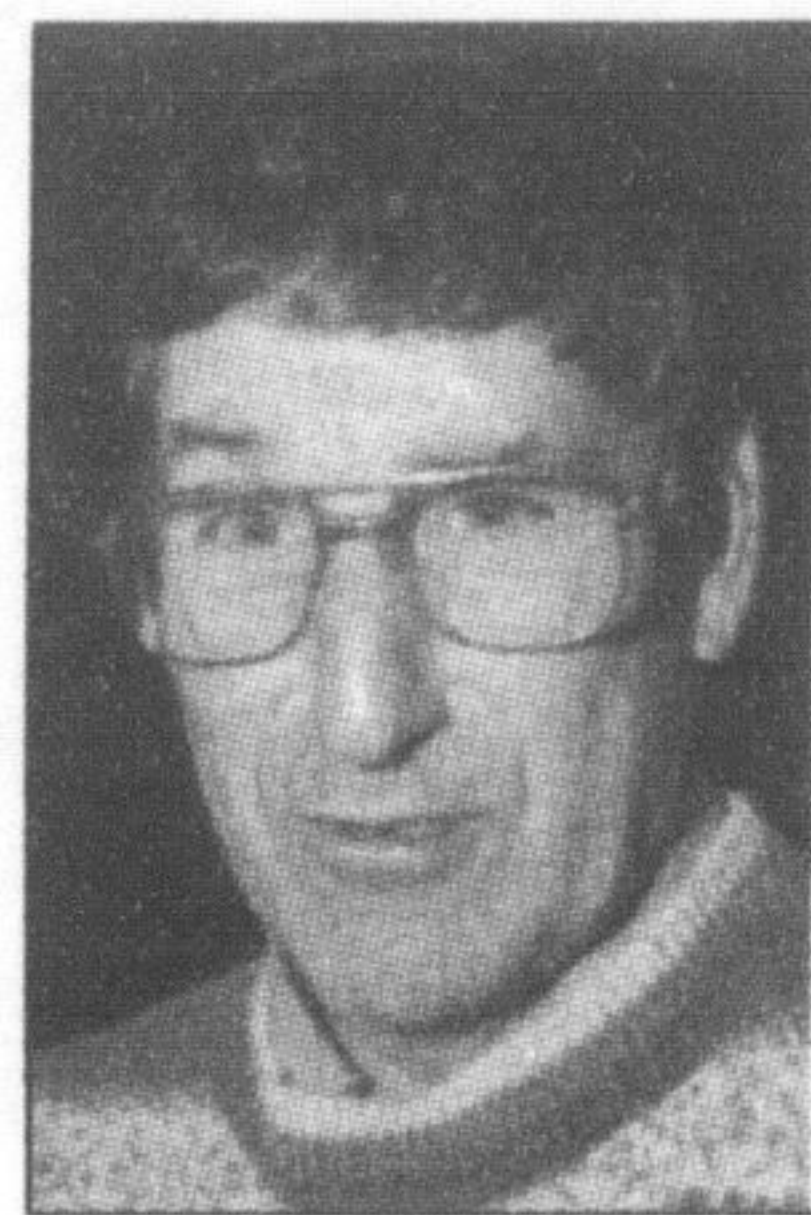


Lee keeps regional council seat

Barry Lee has once again gained the voters' support. And they in turn have gained his respect.

Just moments after his seventh term on council — and sixth at the regional post — had been declared, the long-time councillor touched on perception versus reality with regard to members of his ever-growing urban constituency.



Barry Lee

WARDS 1 & 3 (Regional)	
	# votes
Barry Lee	2065
Tony Lambert	1773
Frank Massara	422

"I found people in the new areas of town to be the complete opposite of what's been portrayed in the press. They're positive and ambitious, not negative at all," said Lee, speaking to regular criticism directed at local issues and officials via letters to the editor in *The Champion*.

"They're the finest bunch of people.

Ninety-five per cent of the people I've been in touch with love Milton."

Stating that he anticipated a tough race after being acclaimed the last two elections, the veteran councillor said he'll continue to work hard to both preserve rural Milton's identity and address the challenges of the urban areas' growing pains.

Having offered a formidable challenge in his first crack at the regional seat, Tony Lambert is certainly keeping another run at council open for consideration.

"Sure, by all means," he said with an air of encouragement.

Lunau, Mowbray are re-elected in close Ward 3 race

Cindy Lunau has maintained her status as one of the longest serving women on town council in recent memory, but not quite her distinction as rural Milton's top choice.

That honour was handed off to Jan Mowbray, who edged out her veteran counterpart by a measly one vote — ending Lunau's run of first-place finishes at three.

Far from discouraged by being eclipsed last night, the now four-term councillor said she's pleased to be back for another four years and looks forward to seeing the implementation of a number of projects, like the Brookville Park expansion and Destiny Milton 2.

"There's still a lot of work to be done. I think the rural area is happy with its representation. They had three credible candidates to choose from, and sometimes it's just a shame you can't elect everyone," said Lunau, referring to another strong run offered by two-time challenger Rick Matchett.

Stepping up her door-to-door campaigning efforts this time around, Mowbray said she actually visited every single rural home and has received plenty of feedback from the e-focus group she established when first voted onto council in 2003. That level of availability no doubt factored heavily into her solid return.

"It's great. I'm thrilled Cindy and I will be representing Ward 3 for the next four years," she said. "I think the rural residents see us having honest, transparent representation on council, and the vote validates that."

So what's her main objective for the next term? "Establishing consistent speed limits on rural roads. That's my priority."

WARD 3 - COUNCILLOR	
	# votes
Jan Mowbray	992
Cindy Lunau	991
Rick Matchett	822

Jump!

INTO A NEW TOYOTA!

2007 Corolla CE

LEASE FOR **\$249*** @ **5.5% APR**
PER MONTH FOR 48 MONTHS WITH \$1,749 DOWN
FREIGHT AND P.D.E. INCLUDED

\$17,795 MSRP**

- 1.8 L, 126 hp engine • 5-speed manual transmission • A/C • AM/FM stereo CD • Power locks and mirrors • Keyless entry & more

HWY 5.3L/100 KM (53 MPG)† CITY 7.1L/100 KM (40 MPG)†

2006 Sienna CE

LEASE FOR **\$379*** @ **2.8% APR**
PER MONTH FOR 48 MONTHS WITH \$3,667 DOWN
FREIGHT AND P.D.E. INCLUDED

\$30,800 MSRP**

- 3.3 L, 215 hp engine • 5-speed automatic transmission • ABS • A/C • Power windows, locks and heated mirrors • Dual sliding doors • Front seat, side and curtain airbags • Tilt and telescopic steering • Keyless entry & more

HWY 8.2L/100 KM (34 MPG)† CITY 12.4L/100 KM (23 MPG)†

2007 Matrix

LEASE FOR **\$279*** @ **5.5% APR**
PER MONTH FOR 48 MONTHS WITH \$1,157 DOWN
FREIGHT AND P.D.E. INCLUDED

\$19,905 MSRP**

- 1.8 L, 126 hp engine • 5-speed manual transmission • A/C • Power locks • Illuminated and keyless entry with hatch release • AM/FM stereo CD • 16" Aluminum alloy wheels & more

HWY 5.9L/100 KM (48 MPG)† CITY 7.9L/100 KM (36 MPG)†

CELEBRATE THE FEELING OF A NEW TOYOTA!

The All-New 2007 Camry LE

LEASE FOR **\$349*** @ **5.9% APR**
PER MONTH FOR 48 MONTHS WITH \$2,291 DOWN
FREIGHT AND P.D.E. INCLUDED

\$25,800 MSRP**

- 2.4 L, 158 hp engine • 5-speed automatic transmission • A/C • Power windows, locks and mirrors • Cruise control • Optimum electronic gauges • Keyless entry with trunk release • AM/FM stereo CD MP3, auxiliary input jack & more

HWY 6.5L/100 KM (43 MPG)† CITY 9.8L/100 KM (29 MPG)†

2007 RAV4

LEASE FOR **\$349*** @ **6.9% APR**
PER MONTH FOR 48 MONTHS WITH \$4,578 DOWN
FREIGHT AND P.D.E. INCLUDED

\$29,300 MSRP**

- 2.4 L, 166 hp engine • 4-speed automatic transmission • A/C • ABS with Electronic Brake Force Distribution • Active torque control 4WD • Power windows and locks • Keyless entry • Power remote heated mirrors • AM/FM CD with MP3 player & more

HWY 7.8L/100 KM (36 MPG)† CITY 10.1L/100 KM (28 MPG)†

2007 Yaris CE HATCHBACK

LEASE FOR **\$189*** @ **5.9% APR**
PER MONTH FOR 48 MONTHS WITH \$1,157 DOWN
FREIGHT AND P.D.E. INCLUDED

\$13,800 MSRP**

- 1.5 L, 106 hp VTI engine with Electronic Throttle Control System with Intelligence (ETCS-i) • 5-speed manual transmission • Power assisted brakes • Driver and passenger airbag supplemental restraint system (SRS) • Intermittent wipers • AM/FM stereo CD & more

HWY 5.5L/100 KM (51 MPG)† CITY 6.9L/100 KM (41 MPG)†

NO SECURITY DEPOSIT ON ALL 2006 AND 2007 LEASES.

Toll Free: 1-800-617-4025 • Fax: (905) 875-1516
info@miltontoyota.com
MyToyotaPlace.com

400 STEELES AVENUE, MILTON

Incumbents Day, Penman to serve another 4 years

Ward 1 voters have decided to stay the course.

Veteran incumbents Rick Day and Brian Penman have both been returned to council, fending off some stiff competition this time around.

Milton's longest-serving councillor, Day will now see his political career stretch past the quarter-century mark.

"It goes by fast though," he explained. "I told (challenger) Mike Cluett tonight that four years goes by in a blink. It's an honour to be back. It's always nice when your message gets across to the electorate and they trust you to represent their interests."

While generally pleased with this fall's campaign — including what he called a high road taken by all Ward 1 candidates — he did express disappointment with the 23 per cent voter turnout in his area.

"That type of apathy is discouraging," said Day, who gained a lot of visibility at a recent meeting he organized to discuss the controversial proposed power plant — which became a hot button issue in the latter stages of the campaign.

Equally pleased to be voted in for another term, Penman remarked on just how much his ward has changed in recent years — and how it'll have to be looked at differently as it continues to grow. "Public consultation will be the way," he said. "As Ward 1 becomes more and more urbanized, the issues of these areas need attention."

Maintaining the right balance between urban and rural Milton is among Penman's chief priorities, as well as continuing to address the power plant issue.

WARD 1 - COUNCILLOR	
	# votes
Rick Day	1232
Brian Penman	1094
Mike Cluett	1002
Greg Nelson	952
Eugene Cummins	186