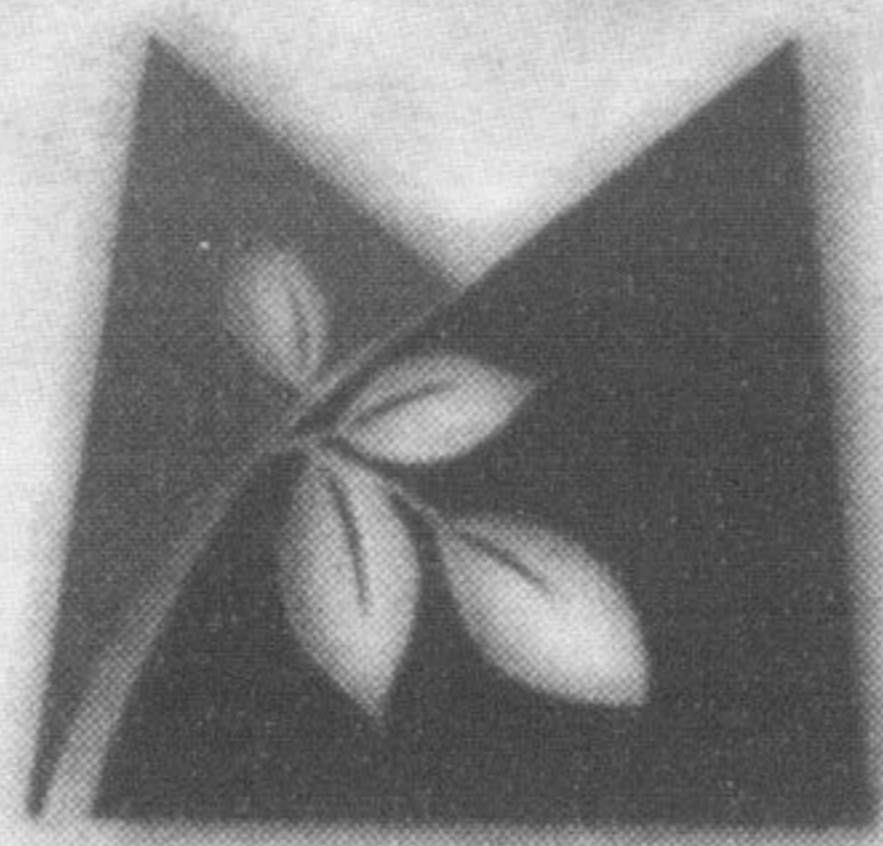


**OVER 350 HOMES SOLD**



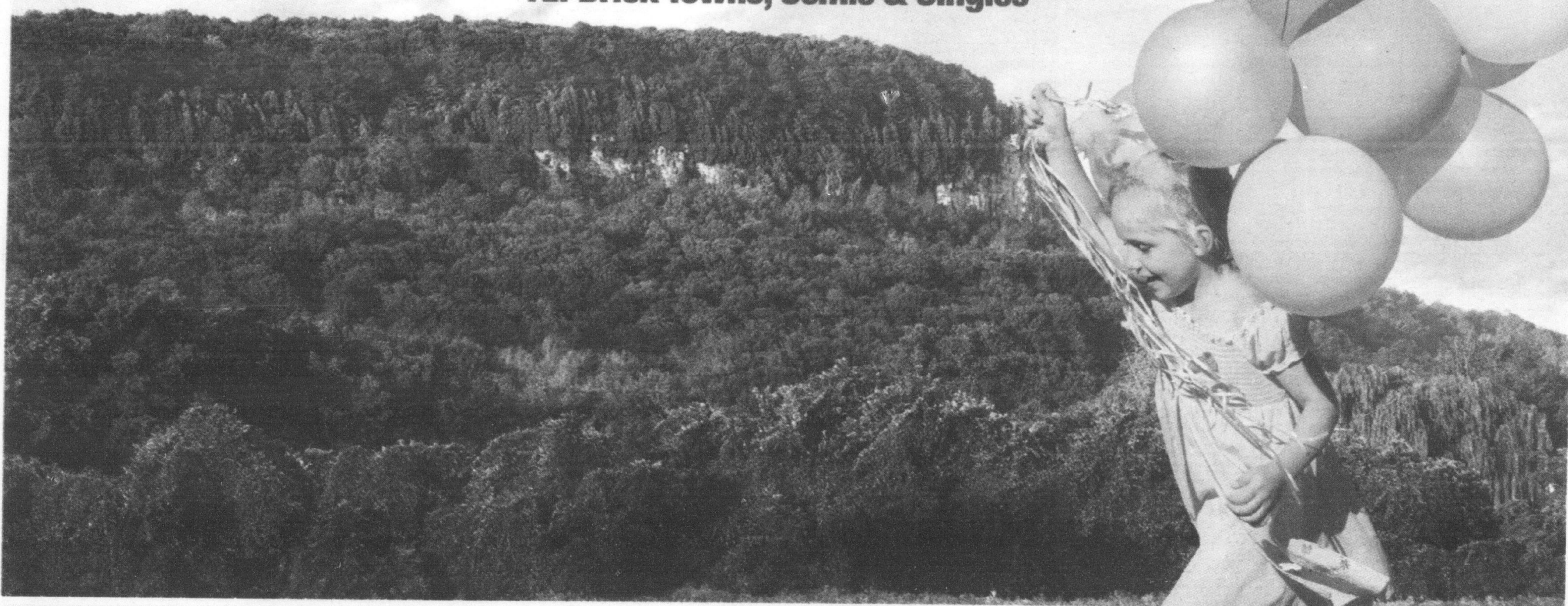
**miltontrails**  
ON THE ESCARPMENT

**New Release of Prime Lots  
This Weekend**

Milton's complete  
masterplanned community

at the foot of the Niagara Escarpment  
with over 50 acres of parks, ponds & greenspace

**All Brick Towns, Semis & Singles\***



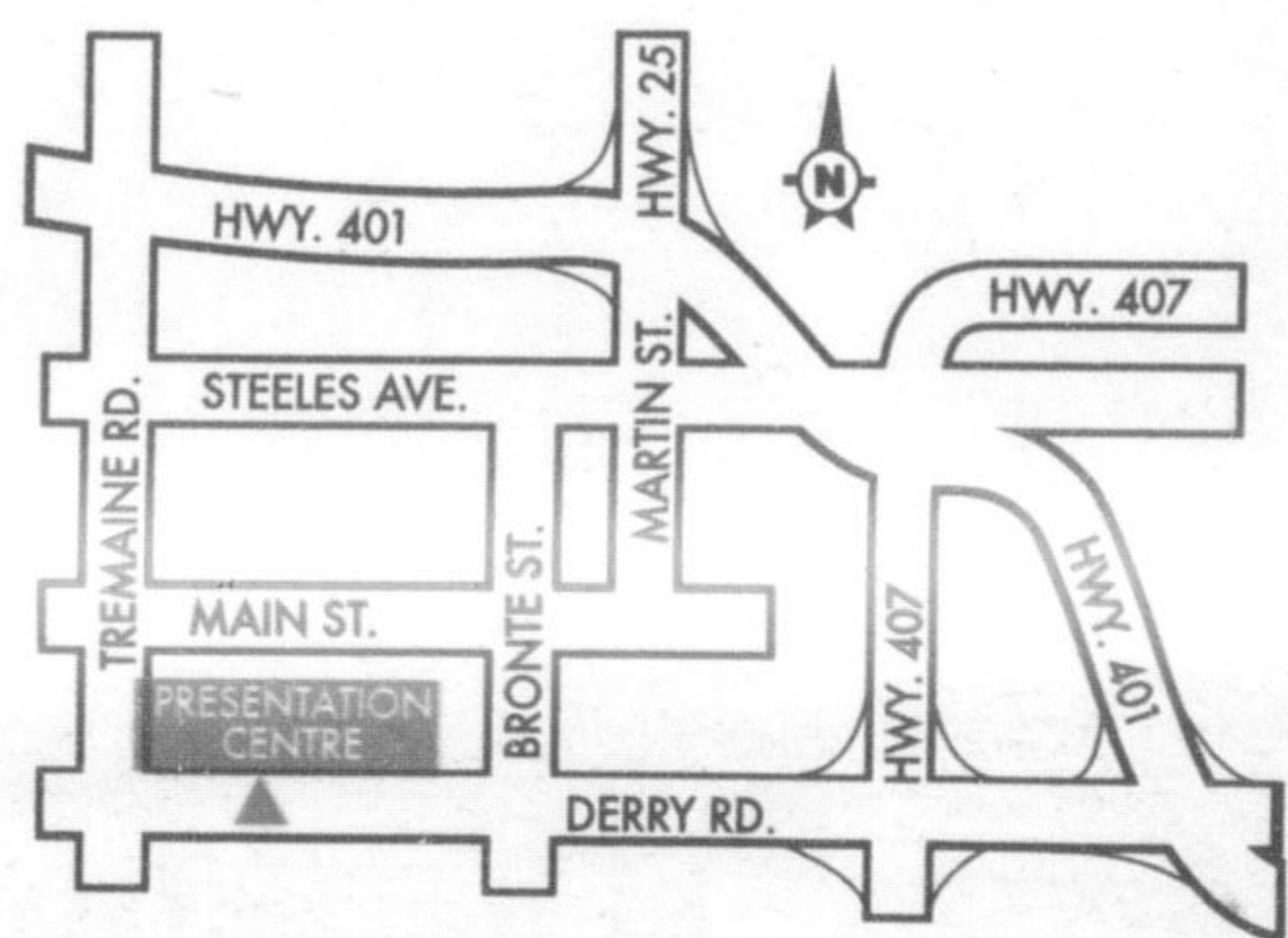
Townhomes from the **\$250's**



Semis from the **\$280's**



Singles from the **\$330's**



presentation centre hours:  
mon. to thurs.: 1 p.m. - 8 p.m.  
sat., sun. & hol.: 11 a.m. - 6 p.m.  
friday: closed

**miltontrails.com**

\*Selected elevations are subject to alternate accent material.  
Prices, terms & specifications are subject to change without notice. E.&O.E.

