

Jr. Royals rally to clinch first

Bishop Reding's football juniors were expected to need at least a season to start making some noise at Division 1.

Problem is, someone forgot to tell them that.

A SanJay Moodie fourth-quarter touchdown Tuesday gave the Royals a 13-9 victory over Oakville's Holy Trinity Titans, and in the process a first-place finish in the Richardson Division.

Moodie scored both BR majors in regular season-ending play, on 35 and 15-yard carries, while a huge defensive stand in the final two minutes of play allowed the Royals to improve to 4-1 on the year.

The Royals will now host Oakville's T.A. Blakelock Tigers in Monday's quarterfinal, starting at 2:30 p.m.

Natural gas water heaters

Save 50%

or more* on your annual water heating costs when compared to electric water heaters.

2 times faster

at heating water compared to electric.

Your water heater is the second largest user of energy in your home and accounts for 20-25% of your energy bill. You can cut your water heating energy bill by 35% or more* by replacing an electric water heater with natural gas.

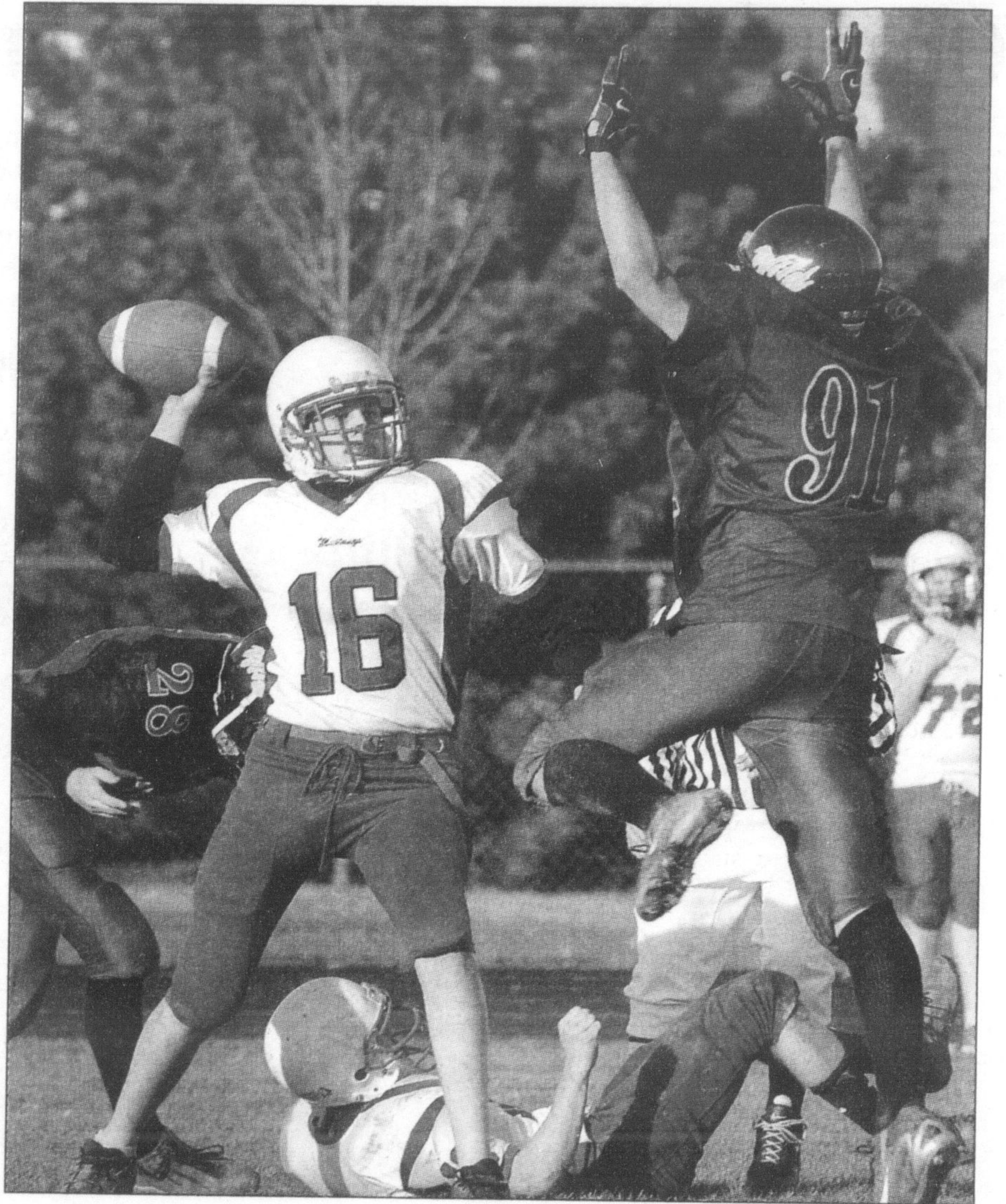
And, because natural gas water heaters heat water more than twice as fast as electric, you'll enjoy an abundant supply of hot water.



uniongas

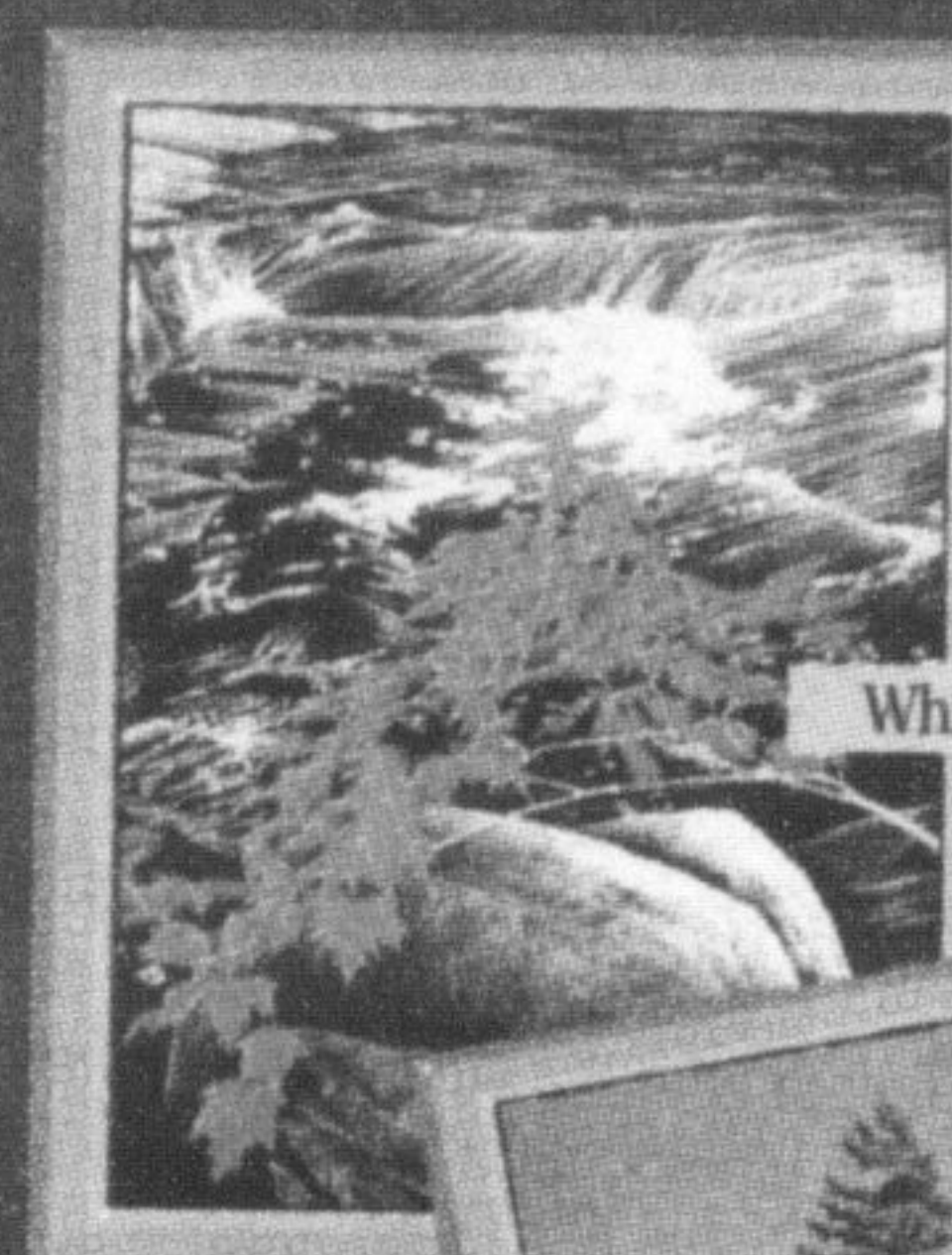
A Duke Energy Company

*Based on a 3 person household with October 2006 electricity and natural gas rates. ©Union Gas Limited 2006 102006



GRAHAM PAINE / CANADIAN CHAMPION

DENIED: Robert Bateman's Mike Murphy leaps into the air to block a passing attempt by Milton District quarterback Eric Cowan during junior football quarterfinal play at MD Monday. The Mustangs squeaked by 7-6, with Brandon Banton blocking a last-minute extra point kick to pull out the win. Dan Bayley's fourth-quarter rouse proved to be the difference, while Jase Lavigne set up Zach Millar's third-quarter touchdown with a 45-yard carry. MD travels to Oakville Tuesday to take on the unbeaten Abbey Park Eagles for a berth to the Tier 2 Halton championship November 15 at Ivor Wynne Stadium.



Whispering Maples



Island Reflections

MEET THE ARTIST

E. ROBERT ROSS

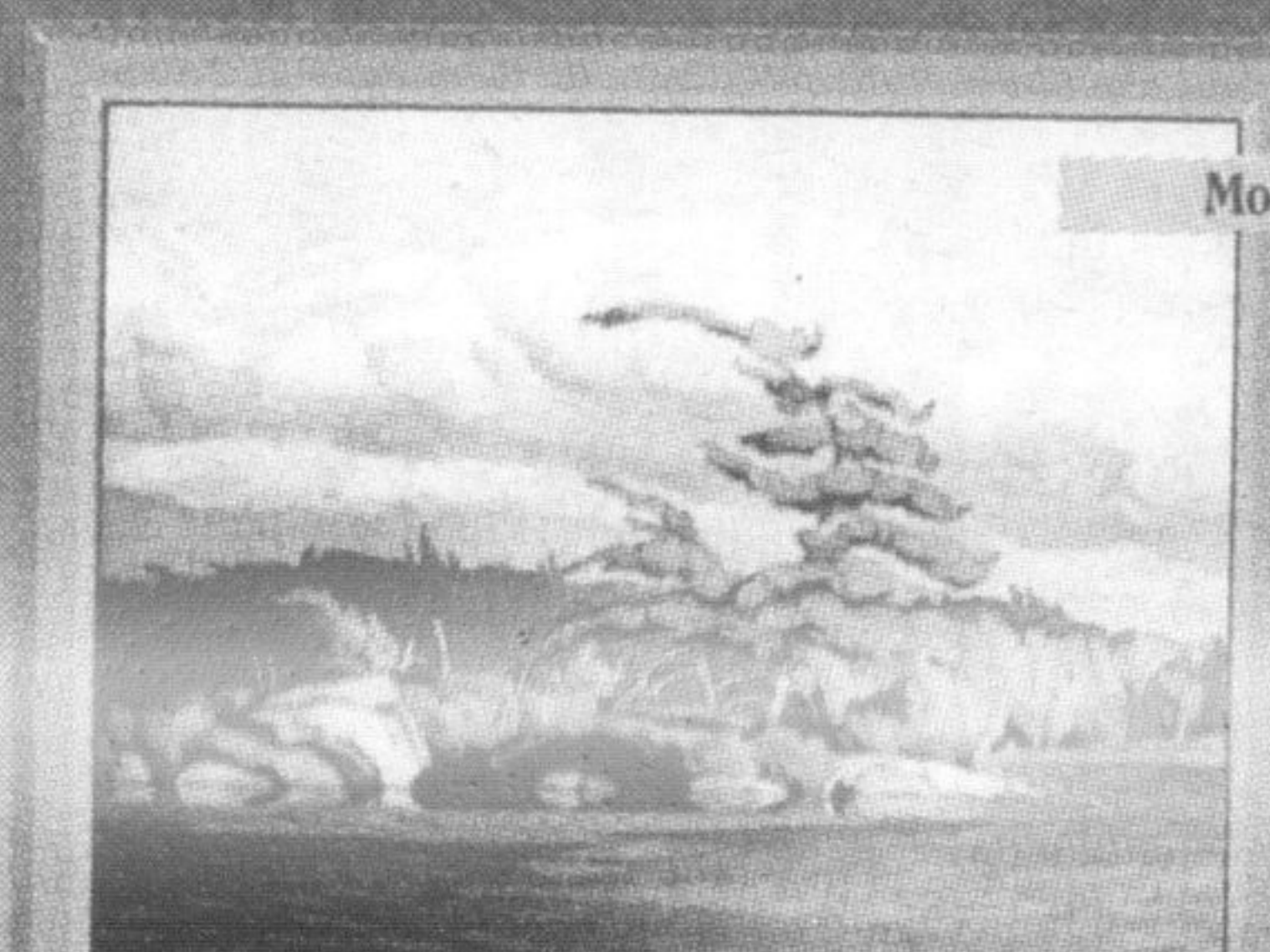
Today's painter of our landscape.

**FRIDAY
NOVEMBER 10TH
FROM 7-10 PM**

See his stunning landscape giclée canvas editions.

For more information please call 905-878-8161.

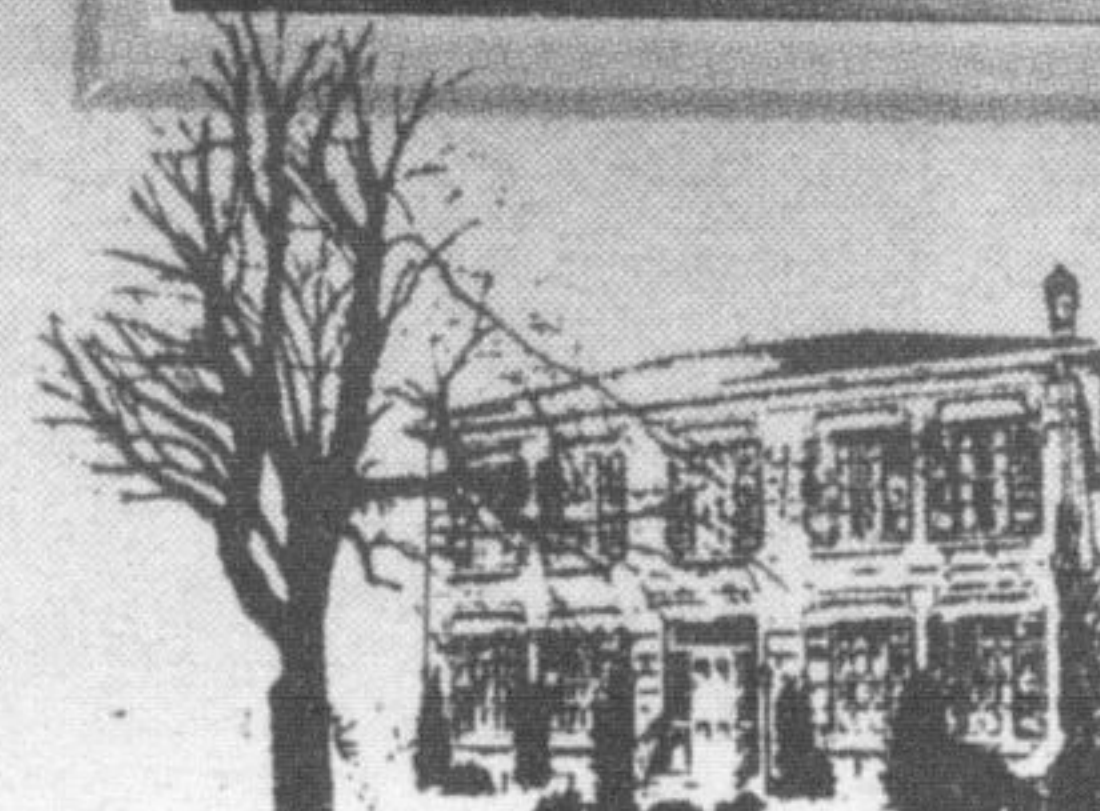
GROUP OF SEVEN ART EXHIBITION & SALE NOVEMBER 10TH - NOVEMBER 26TH



Moose Lake

See a selection of hand initialed limited editions by the late A.J. Casson and decorative works by other members of the famous group.

Voted Milton's Favourite Gallery & Picture Framing



Harrop Art Gallery

Since 1976

345 Steeles Ave. E., Milton • 905.878.8161

OPEN 7 DAYS A WEEK