

DateLine

• from DATELINE on page A14

kindergarten and their caregivers from 9:30 to 11 a.m. at 100 Nipissing Rd., unit 3. It includes crafts, games and songs. For more information, call (905) 875-1022.

The Milton Al-Anon group meets at St. Paul's United Church, 123 Main St. E., at 8 p.m. for family and friends of alcoholics.

Help for Parents, a Halton parent support group, meets in the evening in the basement of the church at 5720 New St. in Burlington. This non-denominational self-support group helps parents of children who are in trouble at home, at school or with the law or who are abusive or taking drugs. The group is a member of the Association of Parent Support Groups in Ontario. For more information, call 1-800-488-5666 or visit www.apsgo.ca.

Milton District Hospital holds a one-on-one breastfeeding clinic with a certified lactation consultant from 9:30 to 11:30 a.m. For more information or to make an appointment, call Jill Hicks at (905) 878-2383, ext. 7610.

Calling New Parents, a free drop-in program for parents and babies aged 6 months and younger, meets with a public health nurse to discuss parenting and infant care. The group meets at the new Ontario Early Years Centre at 400 Bronte St. from 1:30 to 3:30 p.m. For more information, call (905) 825-6000, ext. 7299.

St. Paul's United Church, 123 Main St. S., holds its Parent's Morning Out from 9:30 to 11 a.m. For more information, call (905) 878-1286.

The Halton Women's Centre, 1515 Rebecca St., suite 229, in Oakville, holds its free Employment Network from 9:30 to 11:30 a.m. for unemployed women to learn skills including resumé-writing and interview skills. For more information, call (905) 847-5520.

The Milton Seniors' Activity Centre, 500 Childs Dr., holds its Downsizers Weight Loss Club at 10 a.m. and its Kitchen Band at 9 a.m. The Drama Club meets at 1 p.m. The cost for each activity is \$2 for members and \$4 for non-members. For more information, call (905) 875-1681.

Wednesday Nov. 1

Business and Professional Women (BPW) Halton holds its monthly meeting from 6:45 to 9 p.m. at Rattlesnake

Point Golf Club, 5407 Regional Road 25. The cost is \$10 for pre-registered members and \$15 for non-members. To RSVP, call Pat Dunwoody at (416) 506-8057 or e-mail pdunwoody@ifds-group.com.

An all-candidates meeting for Ward 1 municipal election candidates, the Wards 1 and 3 local/regional councillor candidates, and those running for mayor and regional chair takes place at

• see more DATELINE on page A16

BE A DESIGNATED DRIVER



Join the many people who agree not to drink alcoholic beverages...and to drive everyone in their group home safely.

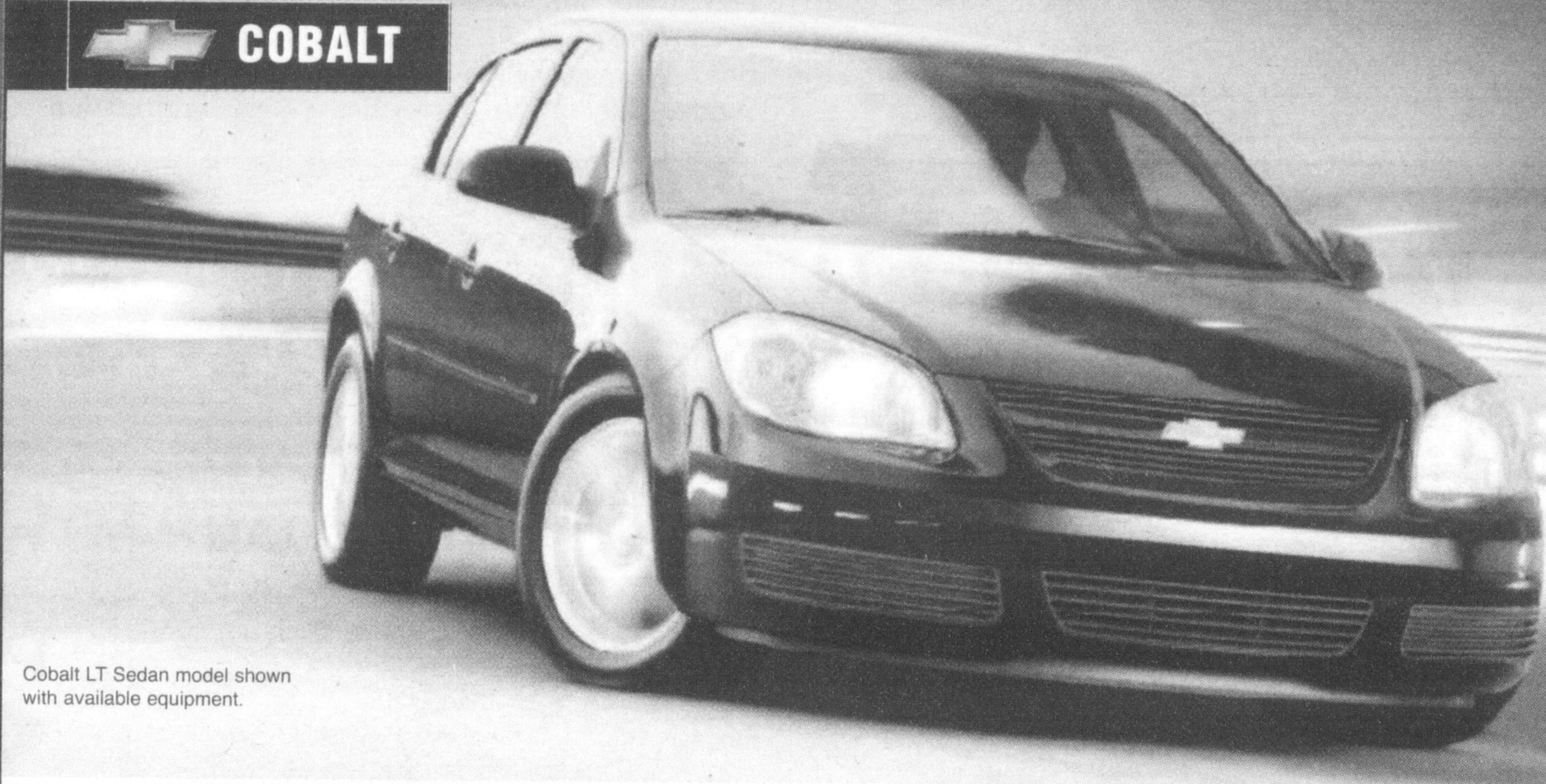
RICHARDSON CHEVROLET  FOR ALL LIFE'S ROADS

“...IT'S ASTOUNDINGLY GOOD...THE HEAD OF THE CLASS...”

AARON ROBINSON, CAR AND DRIVER



 COBALT



Cobalt LT Sedan model shown with available equipment.

STANDARD FEATURES ON COBALT LS SEDAN AND COUPE:

- 2.2L 145 hp ECOTEC Engine
- 5-speed Getrag Manual Transmission
- CD Stereo
- 15" Wheels
- 60/40 Split Folding Rear Seat
- Programmable Driver Information Centre

AVAILABLE EXCITING FEATURES ON OTHER MODELS:

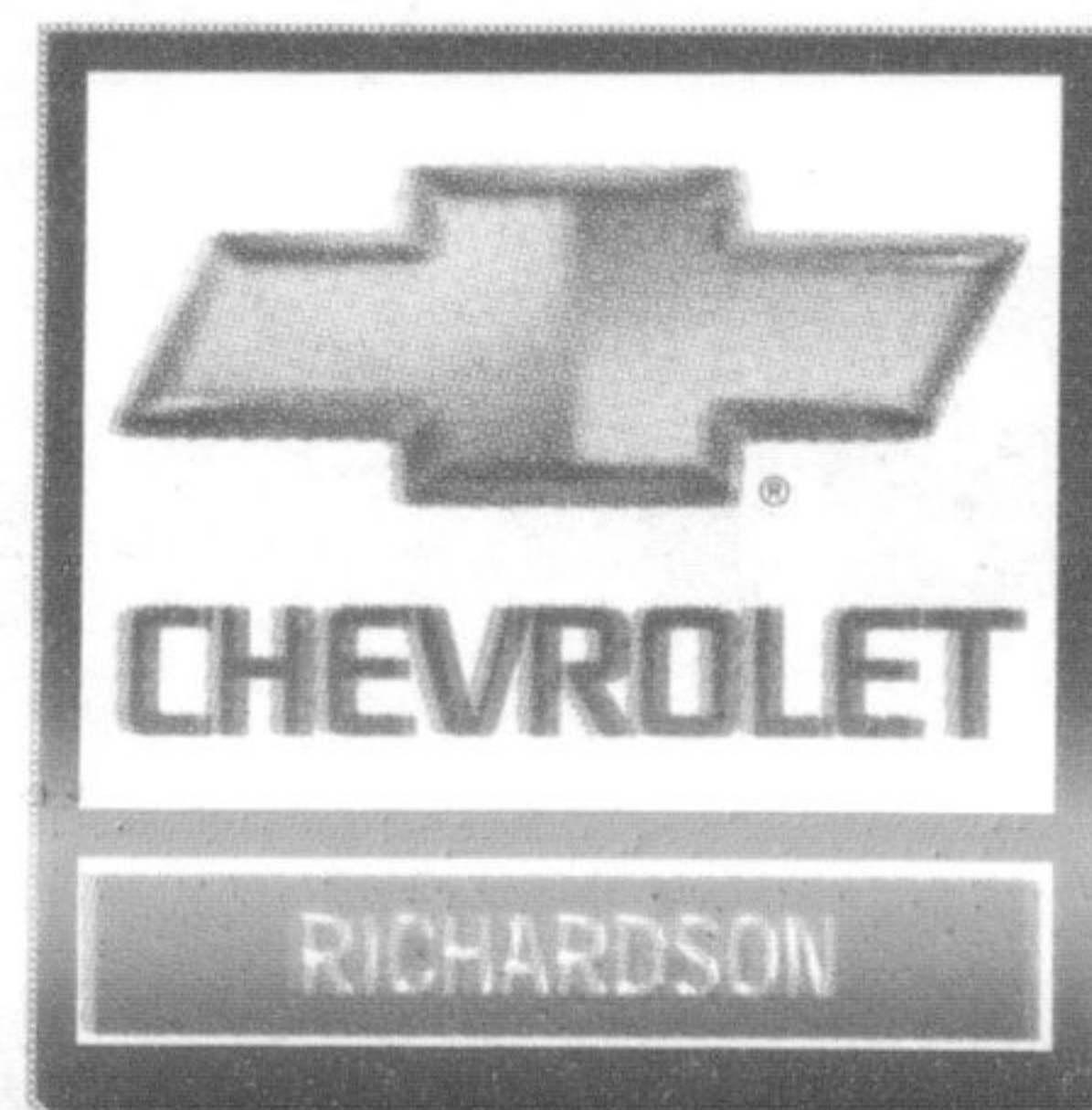
- 171 hp and 205 hp ECOTEC Engines
- 17" and 18" Alloy Wheels
- XM Satellite Radio
- OnStar In-Vehicle Communications and Assistance Service - includes one year Safe and Sound Plan
- 7-Speaker 228 Watt Premium Sound System and 10-inch subwoofer

HOW COBALT STACKS UP.

	FEATURES	2006 COBALT LS	2006 CIVIC SI	2006 COROLLA CE
More Performance	Horsepower	145	140	128
	Torque (lb.-ft.)	155	128	122
	Electric power steering	standard	na	na
More Capability	Traction assist	optional	na	na
	Cargo capacity (cu.ft.)	397 (14.8)	325 (11.5)	385 (13.8)
	60/40 split folding rear seat	standard	na	na
More Convenience	Automatic headlight control	standard	na	na
	Variable intermittent wipers	standard	na	na
	Driver information centre	standard	na	na
	Remote trunk release	power	manual	manual
Air conditioning	optional	na	optional	

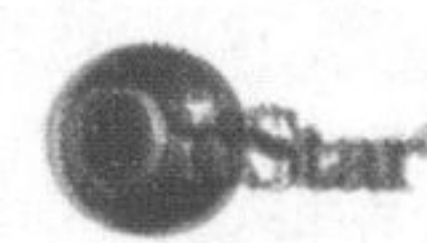
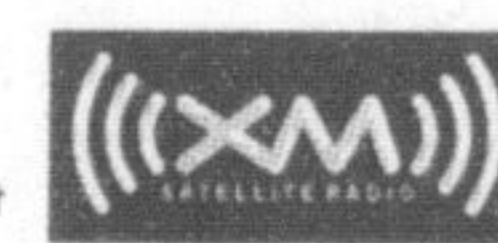
2006 MODEL CLEAROUT IS ON!

www.richardsonchev.ca



CHECK OUT HOW CHEVROLET STACKS UP. chevrolet.gmcanada.com

Ask about our three months of no-charge XM service!



See dealer for complete details.

7 Costly Home Seller Mistakes Free Report

Visit:

www.haltoncostlyhomesellers.com

Prudential Town Centre Realty Brokerage

OPEN HOUSES

SATURDAY OCTOBER 28

ROYAL LEPAGE MEADOWTOWNE REALTY 905-878-8101

- 2-4 pm, 1682 Stover, \$305,900 Suzanne Bodanis
- 2-4 pm, 805 Gazley, \$259,900 Ingrid Hollinger
- 2-4 pm, 1087 Holdsworth, \$434,900 Darryl Flowers
- 2-4 pm, 828 Cabot Trail, \$319,900 Angel Lyons
- 2-4 pm, 169 Sherwood, \$319,900 Pat Hermiston
- 2-4 pm, 548 Woodward, \$329,900 Barb Crowe

SUNDAY OCTOBER 29

ROYAL LEPAGE MEADOWTOWNE REALTY 905-878-8101

- 2-4 pm, 548 Woodward Ave., \$329,900 Suzanne Bodanis
- 2-4 pm, 1087 Holdsworth, \$434,900 Darryl Flowers
- 2-4 pm, 828 Cabot Trail, \$319,900 Angel Lyons
- 2-4 pm, 169 Sherwood, \$319,900 Pat Hermiston
- 2-4 pm, 511 Farlow Cres, \$339,000 The Brazeau Group
- 2-4 pm, 1004 Cumming Blvd., Eva Gooding
- 2-4 pm, 48 Bell St, \$305,900 Joyce Hagevik
- 2-4 pm, 532 Sunnyvale Cres, Doug Howden
- 2-4 pm, 345 Pettigrew Kim Scott

RE/MAX REAL ESTATE CENTRE 905-878-7777

- 2-4 pm, 1041 Zimmerman Cres., \$449,900 Theresa Keates
- 2-4 pm, 88 Lakecrest Trail, Brampton, \$319,900 Deborah Tuff
- 2-4 pm, 876 Governors Court, \$314,500 Clayton Hackenbrock
- 2-4 pm, 283 Fleming Dr., \$419,888 Barb King

KELLER WILLIAMS OUR TOWN REALTY 905-691-4215

- 2-4 pm, 443 Willmott Cres., \$389,000, The Newell Team
- 2-4 pm, 81 Millside Dr #204, The Newell Team

VISIT AN OPEN HOUSE THIS WEEKEND!

Also check the WEEKEND SPOTLIGHT ON HOMES & THE REGIONAL PAGE

showcasing more Open Houses and New Listings!