



# IT'S 2007. AND THE ROAD HAS NEVER LOOKED BETTER.

Time to get actively involved in a new Mazda. Visit your dealer today and experience the soul of a sports car in every vehicle we build.

★★★★★  
HIGHEST CRASH TEST RATING POSSIBLE\*



zoom-ZOOM

The all-new CX-7 crosses versatile 5-passenger design with sport performance in an extraordinary way. Complementing the cutting-edge exterior are a sport-bred chassis and a **turbocharged engine** that kicks out **244-horsepower**. Nothing like it has ever crossed your path.

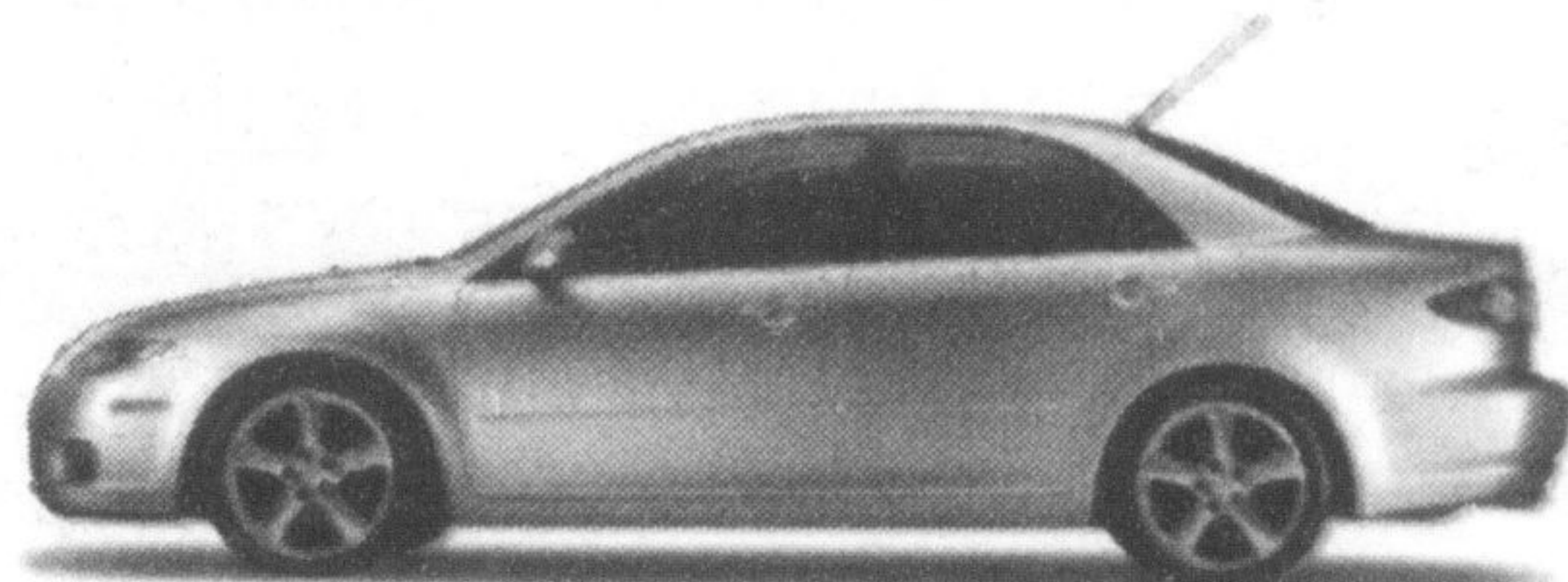
STARTING FROM  
\$33,995\*\* MSRP

- WITH - **4.9%**

PURCHASE FINANCING FOR 36 MONTHS  
AVAILABLE ON ANY NEW 2007 CX-7††

## 2007 MAZDA CX-7 GS AWD

LEASE FROM  
**\$339\*** - AT - **3.9%** LEASE APR  
PER MONTH/24 MONTHS  
WITH \$5,495 DOWN PAYMENT  
NO SECURITY DEPOSIT  
LEASE PAYMENT INCLUDES FREIGHT AND P.D.E.

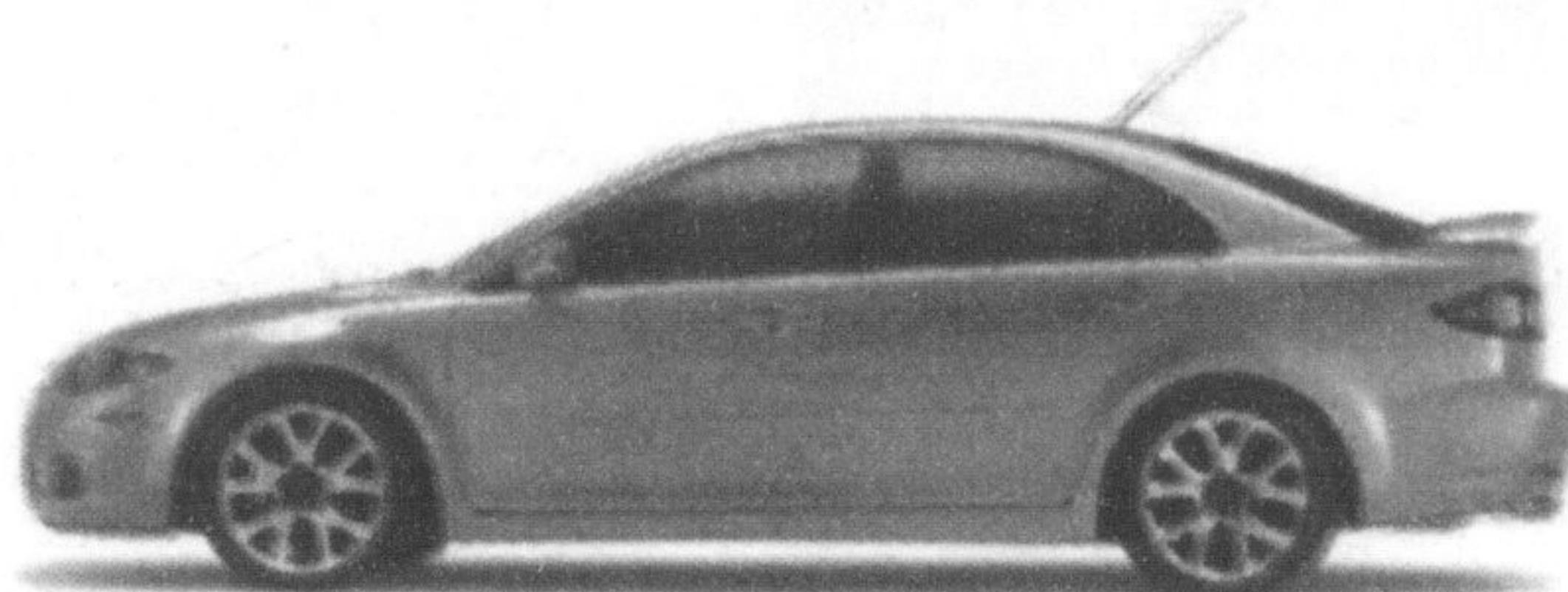


GS-V6 with Sport package model shown

### 2007 MAZDA6 SEDAN GS-I4 5-SPEED AUTOMATIC TRANSMISSION

A true sports performer with ABS, Traction Control System, 17" alloy wheels, 8-way power driver's seat, fog lights and a leather-wrapped steering wheel. Not to mention over 100 international awards.

LEASE FROM  
**\$289\*** - AT - **2.9%** LEASE APR - OR - **3.9%**  
PER MONTH/48 MONTHS WITH \$3,095 DOWN PAYMENT  
NO SECURITY DEPOSIT  
LEASE PAYMENT INCLUDES FREIGHT AND P.D.E.



GT-V6 model shown

### 2007 MAZDA6 SPORT HATCHBACK GS-I4 5-SPEED AUTOMATIC TRANSMISSION

The spirited Mazda6 Sport hatchback offers flexible room, plus the real convenience of a liftback. Not to mention a responsive 2.3 L DOHC engine, Traction Control System and 17" alloy wheels.

LEASE FROM  
**\$299\*** - AT - **2.9%** LEASE APR - OR - **3.9%**  
PER MONTH/48 MONTHS WITH \$3,095 DOWN PAYMENT  
NO SECURITY DEPOSIT  
LEASE PAYMENT INCLUDES FREIGHT AND P.D.E.



GT-V6 with Performance package model shown

### 2007 MAZDA6 SPORT WAGON GS-V6 6-SPEED AUTOMATIC TRANSMISSION

Get all the power, performance and handling of the Mazda6 family, plus nearly 1,000 L of versatile space. That's enough cargo capability to rival some SUVs.

LEASE FROM  
**\$319\*** - AT - **2.9%** LEASE APR - OR - **3.9%**  
PER MONTH/48 MONTHS WITH \$3,295 DOWN PAYMENT  
NO SECURITY DEPOSIT  
LEASE PAYMENT INCLUDES FREIGHT AND P.D.E.



**mazda**

EXPERIENCE **EMOTION IN MOTION** AT YOUR LOCAL MAZDA DEALER.

To locate a dealer near you, visit [www.mazda.ca](http://www.mazda.ca) or call 1-800-263-4680.

**READY TO ROLL** OUR PRE-DELIVERY COMMITMENT MEANS EVERY NEW MAZDA IS CHECKED OUT, GASSED UP AND FITTED WITH FLOOR MATS. • ASK ABOUT OUR OUTSTANDING COMPREHENSIVE AND POWERTRAIN WARRANTY COVERAGE. ASK ABOUT OUR LOYALTY OFFERS FOR EXISTING MAZDA CUSTOMERS. GRADUATES GET AN ADDITIONAL CASH AWARD OF UP TO \$1,000 TOWARDS A PURCHASE OR LEASE.

† 3.9% APR Purchase Financing 60 months is available on all new 2007 Mazda6 - Based on a representative agreement using an MSRP of \$26,395 for the 2007 Mazda6 sedan GS-I4 with a financed amount of \$20,000 the cost of borrowing for a 60-month term is \$2,045, using an MSRP of \$27,395 for the 2007 Mazda6 Sport hatchback with a financed amount of \$25,000 the cost of borrowing for a 60-month term is \$2,557, using an MSRP of \$29,095 for the 2007 Mazda6 Sport Wagon with a financed amount of \$25,000 the cost of borrowing for a 60-month term is \$2,557. †† 4.9% APR Purchase Financing 36 months is available on all new 2007 Mazda CX-7 - Based on a representative agreement using an MSRP of \$33,995 for the 2007 CX-7 GS with a financed amount of \$30,000, the cost of borrowing for a 36-month term is \$2,320. Down payment may be required. \$1,275 freight and P.D.E. for all Mazda6 models and \$1,390 for all CX-7 models, \$65 PPSA, licence, insurance, taxes and other dealer charges are extra. \*\*\*Starting MSRP available on new 2007 CX-7 GS AWD (PKS187AA00) is \$33,995. As shown, starting price for 2007 CX-7 GT (PVT187AA00) is \$35,195. Excludes \$1,390 freight and P.D.E. for all CX-7 models. \*Offers available on retail leases of new 2007 CX-7 GS AWD, 2007 Mazda6 sedan GS-I4 automatic transmission, 2007 Mazda6 Sport hatchback GS-I4 automatic transmission and 2007 Mazda6 Sport Wagon GS-V6 automatic transmission. Total lease obligation for the 2007 Mazda CX-7 GS AWD (PKS187AA00) is \$13,631, including down payment of \$5,495. Total lease obligation for the 2007 Mazda6 sedan GS-I4 automatic transmission (G4SD87AB00) is \$16,967, including down payment of \$3,095. Total lease obligation for the 2007 Mazda6 Sport hatchback GS-I4 automatic transmission (G5SD87AA00) is \$17,447, including down payment of \$3,095. Total lease obligation for the 2007 Mazda6 Sport Wagon GS-V6 automatic transmission (G6S2B7AA00) is \$18,607, including down payment of \$3,295. For other models see your dealer for details. Lease payment includes freight and P.D.E. of \$1,275 for all Mazda6 models and \$1,390 for all CX-7 models. PPSA registration fee of \$28.84 for a 24-month term and \$45.80 for a 48-month term extra. Don't even think about a security deposit. It'd just mean more paperwork for us. And besides: we like you. 20,000 km per year mileage allowance applies; if exceeded, additional 12¢ per km applies. 25,000 km leases also available. Licence, insurance, taxes and other dealer charges extra. Dealer may sell/lease for less. Limited quantities available. Dealer order or trade may be necessary on certain vehicles. Offers available from October 3, 2006 for a limited time only. Lease and Finance on approved credit for qualified customers only. See your dealer for details. ♦ Awarded to the 2007 Mazda CX-7 for front driver, front passenger, side front and rear seat impact protection by the U.S. Government National Highway Traffic and Safety Administration (NHTSA).

