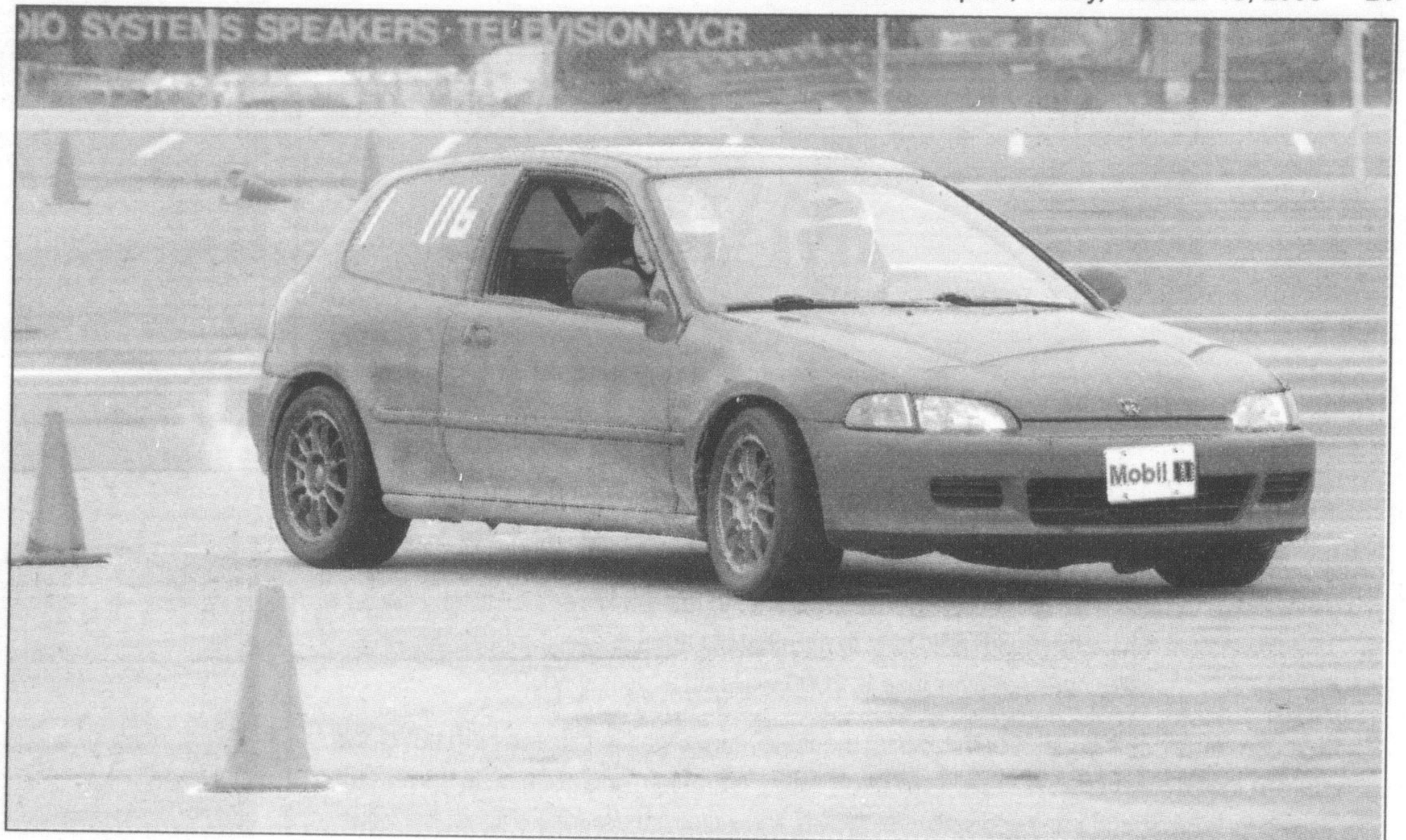


GRAHAM PAINE / CANADIAN CHAMPION

**PEDAL TO THE METAL:** Above, Ontario Transportation Minister Donna Cansfield shows a little trepidation before heading out onto the slalom course in a Honda Civic (at right) during the recent High Performance Auto Slalom event at the Milton GO station. Designed to take street racing off the road, the event was put on by the Milton Road Safety Committee and Ontario region of the Canadian Automobile Sports Clubs.



## The Regional Municipality of Halton

Connect With Your Future At The

### Job Fair . . .

Wednesday, Oct. 18, 2006  
 Burlington Convention Centre  
 1120 Burloak Drive, Burlington  
 12 p.m. – 5 p.m.

- Access to employers from a variety of industries
- Free resume assessment
- Admission and parking are free
- Come prepared... bring your resumes!

Some of the participating employers include:

- |                                 |   |   |
|---------------------------------|---|---|
| • AIC Ltd.                      | • Halton Catholic District School Board | • Leibherr-Canada Ltd.                    |
| • Aseco Integrated Systems Ltd. | • Cogeco Cable Canada Inc.              | • TitleServe Inc.                         |
| • Best Buy Canada               | • Evertz Microsystems Ltd.              | • The Home Depot                          |
| • Tender Choice Foods Inc.      | • Dependable IT                         | • The Region of Halton                    |
| • Wal-Mart                      | • Reunion Island Coffee                 | • The TDL Group Corp.                     |
| • Wallace & Carey Inc.          | • Sears Canada                          | • Costco Wholesale                        |
| • Ippolito Group                |   | • Clarica/Sunlife Financial Services Inc. |

And many more . . .

For a full listing of employers or for further information please call Halton Region Income & Employment Services at 905-825-6000 ext. 7121.

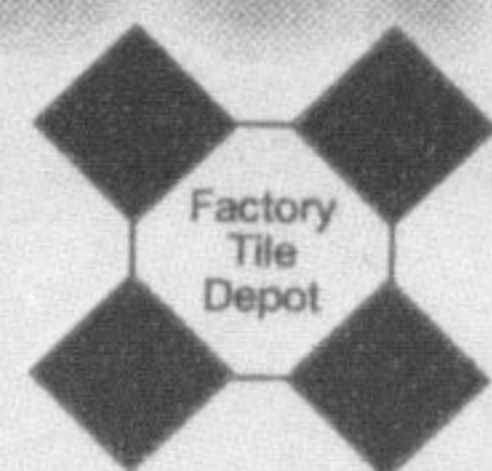
*Now!*  
**Open!**

**11,000 SQ. FT. OF SELECTION, SERVICE AND QUALITY!**

### FACTORY TILE DEPOT

1360 Speers Road, Oakville  
 (East of third line)

**905.465.1650** www.factorytiledepot.ca  
 Mon.-Thurs. 9:30-6, Fri. 9:30-5, Sat., 10-5, Closed Sun.

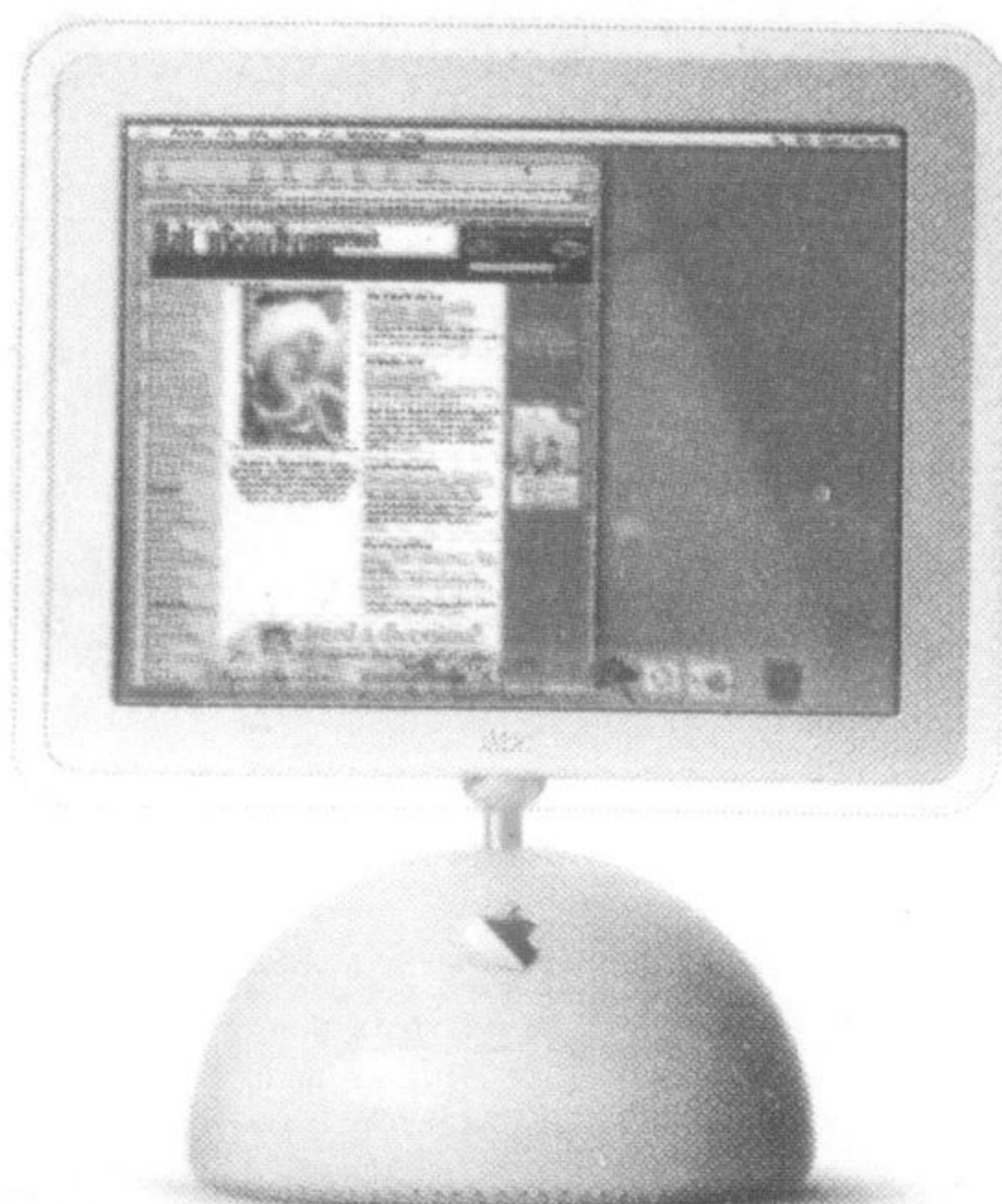


**WEEKLY PROMOTION:**

**Tumbled Marble Ivory 4x4 ..... \$3.59 sq.ft.**  
**Indian Autumn Slate 12x12 ..... \$2.49 sq.ft.**

WE IMPORT AND STOCK AN EXTENSIVE COLLECTION OF CERAMICS, PORCELAINS, TRAVERTINES, GLASS, MOSAICS, SLATE, GRANITE, MARBLE AND ALL INSTALLATION MATERIALS.

**Are you connected to your community?**



Get all the news from Milton, Oakville, Burlington and surrounding areas quickly and conveniently online and on your schedule.

www.haltonsearch.com

24/7

## Discover, learn and connect at Bridges to Better Business, Nov. 1



Joyce Savoline  
 Chairman

Halton Region is proud to recognize Salute to Small Business month with the Bridges to Better Business event on Wednesday, November 1, from 11:30 a.m. to 4:45 p.m. at Halton Regional Centre. The event features speakers, discussion groups and networking opportunities, all included in the \$50 registration fee.

Keynote speaker Ian Portsmouth, Editor and Associate Publisher of PROFIT Magazine, will talk about strategies for success by Canada's fastest-growing companies. An economist with RBC Financial Group will present an economic overview of 2006 and share a "look ahead" for 2007. Attendees will also join expert-led discussion groups on topics including sales and marketing, media relations, website optimization, and legal and accounting issues. Visit [www.halton.ca/business](http://www.halton.ca/business) to register.

1151 Bronte Road, Oakville, Ontario L6M 3L1  
 Tel: 905-825-6000 • Toll Free: 1-866-4HALTON • TTY: 905-827-9833 • [www.halton.ca](http://www.halton.ca)