

Motorist narrowly misses officer, provoking pursuit

An Acton man has been charged with dangerous driving after a motorist narrowly missed plowing down a police officer early Monday morning.

Police said an officer was at Tremaine and Burnhamthorpe roads directing traffic due to an accident just after 2 a.m. when a car sped toward and almost struck him, despite the flashing cruiser lights.

The officer got in his car and followed the driver, observing him running a red light. The motorist continued west on Dundas Street in Burlington, where he eventually stopped.

An 18-year-old Acton man has been charged with dangerous driving, flight from police and refusing to provide a breath sample.

Rural home broken into

A television and jewelry were stolen from a No. 20

PoliceBlotter

Sideroad home last week.

Police said an unknown suspect entered the home through an unlocked door sometime between 2 and 4 p.m. September 21 and ransacked the rooms.

A 46-inch Samsung wide screen DLP TV, jewelry and a camera worth a total of \$17,000 were stolen.

Train facility broken into

Equipment was stolen from a GO Transit maintenance facility overnight Saturday.

Police said unknown suspects stole power tools and equipment worth \$3,600 from the facility at Fifth Line, south of Main Street.

Arson suspected

Police are investigating a suspicious fire that broke out on Syer Drive last week.

At about 11:45 p.m., emergency services responded to a van ablaze in a driveway.

The van, which was used to store equipment, was destroyed by the time the fire was extinguished, police said. Arson is suspected.

Backhoe damaged

A backhoe parked at Tremaine Road and Steeles Avenue West was vandalized overnight September 20.

Police said unknown suspects shattered the passenger side window of the yellow John Deere backhoe.

Damage is estimated at \$300.

Crime Stoppers of Halton

Computers stolen from Catholic school

Halton Regional Police are investigating a break-in at an elementary school.

Between 9 p.m. September 16 and 1 a.m. September 17, seven laptop computers were stolen from the computer room at Guardian Angels School, 650 Bennett Blvd.

The Dell laptops were valued at \$10,500.

There was no sign of forced entry.

If you have any information that leads to an arrest in this or any other matter, you may be eligible for a cash reward. You will never have to give your name or testify in court. Crime Stoppers of Halton doesn't subscribe to call display.

Call 1-800-222-TIPS (1-800-222-8477) or check out Crime Stoppers' Web site at www.haltoncrimestoppers.com.

When clean dishes look dirty, it's time to call Culligan.

Enjoy Culligan for only \$19.95 a month.

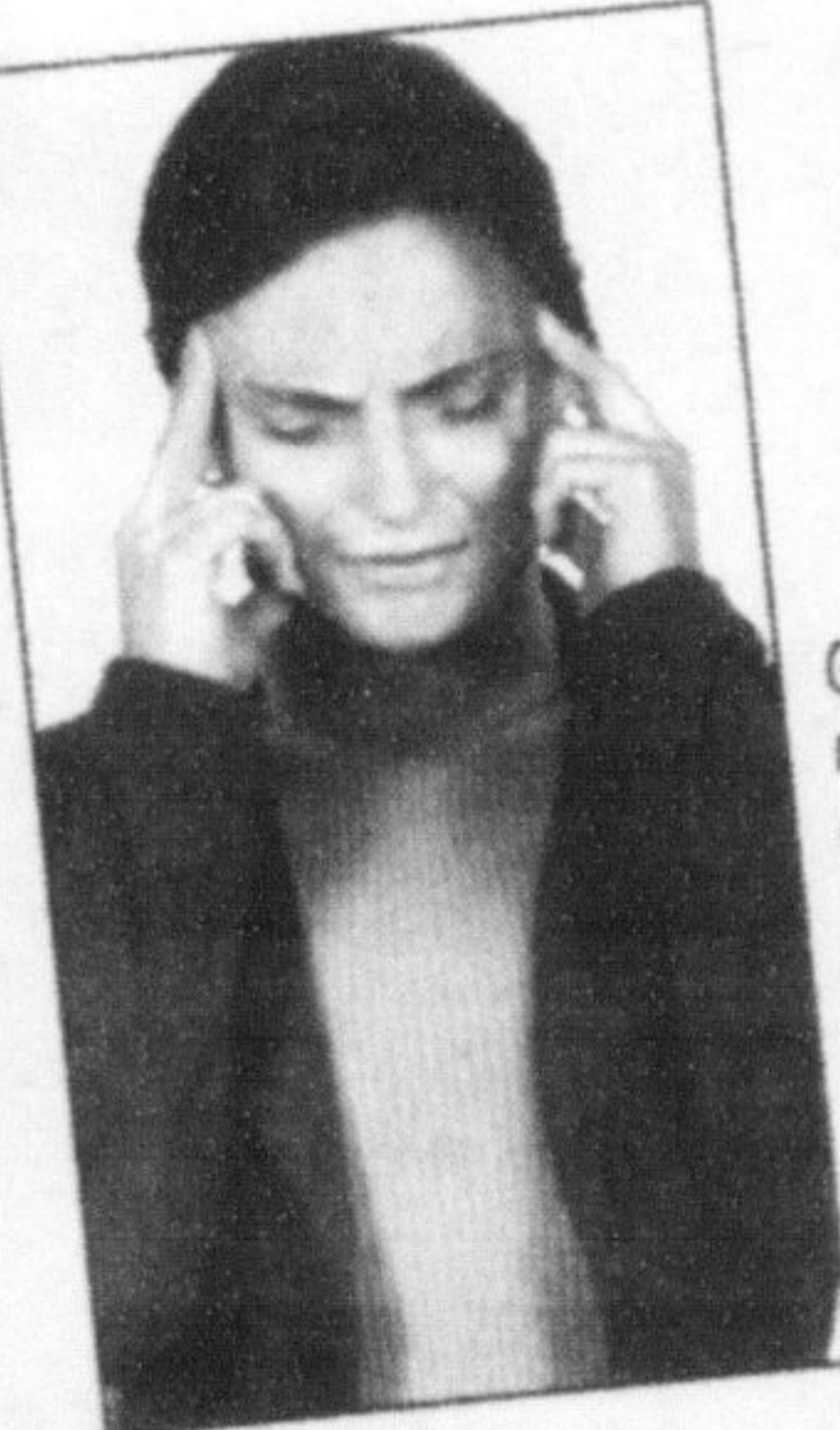
See your local Culligan dealer for details.

Culligan

better water. pure and simple.™

623 Main Street E. Milton
Phone (905) 878-2474
culliganmilton@aol.com

Learn more about better water at CULLIGAN.com



Do you suffer with Headaches?
Chiropractic can help!

Gentle, safe and effective spinal adjustments can remove irritations to nerves that will relieve the pain caused by misalignments in your spine. Chiropractic is safe, highly effective and virtually painless. We are a fully integrated, multi-disciplinary clinic that offers a wide variety of solutions for all your healthcare needs. In addition to Chiropractic Care, we design personalized exercise programs to optimize and improve your spinal health. Our aim is to provide patient-centered, personalized healthcare that will make an IMPACT.

IMPACTING YOUR HEALTH, FROM PAIN TO FREEDOM...

- Chiropractic Care
- Massage Therapy
- Homeopathic Care
- Acupuncture
- Ultrasound Therapy
- Custom Orthotics
- Injury Rehabilitation
- IFC & TENS Therapy
- Exercise Programs



Dr. Vinay Garg

IMPACT
Chiropractic and Rehabilitation Centre

917 Nipissing Road, Milton
(Corner of Thompson & Nipissing)
905-693-0003

CORRECTION NOTICE VALDY Concert

The ad which appeared in the Canadian Champion on Tuesday Sept. 26

announcing the VALDY CONCERT being brought to you by Just Milton Folks and sponsored by Delacourt's Fine Tableware & Gifts included an incorrect email address.

The correct email address is www.justmiltonfolks.ca

The Champion apologizes for the error.

T|M DR. T. MURPHY & ASSOCIATES
Psychological Services of Halton

DR. T. MURPHY
PSYCHOLOGIST



PRACTICE IN CLINICAL AND COUNSELLING PSYCHOLOGY, PROVIDING ASSESSMENT AND TREATMENT SERVICES TO INDIVIDUALS AND COUPLES

Dr. T. Murphy & Associates: Psychological Services of Halton offers a range of assessment and treatment services for a number of challenges and problem areas, including:

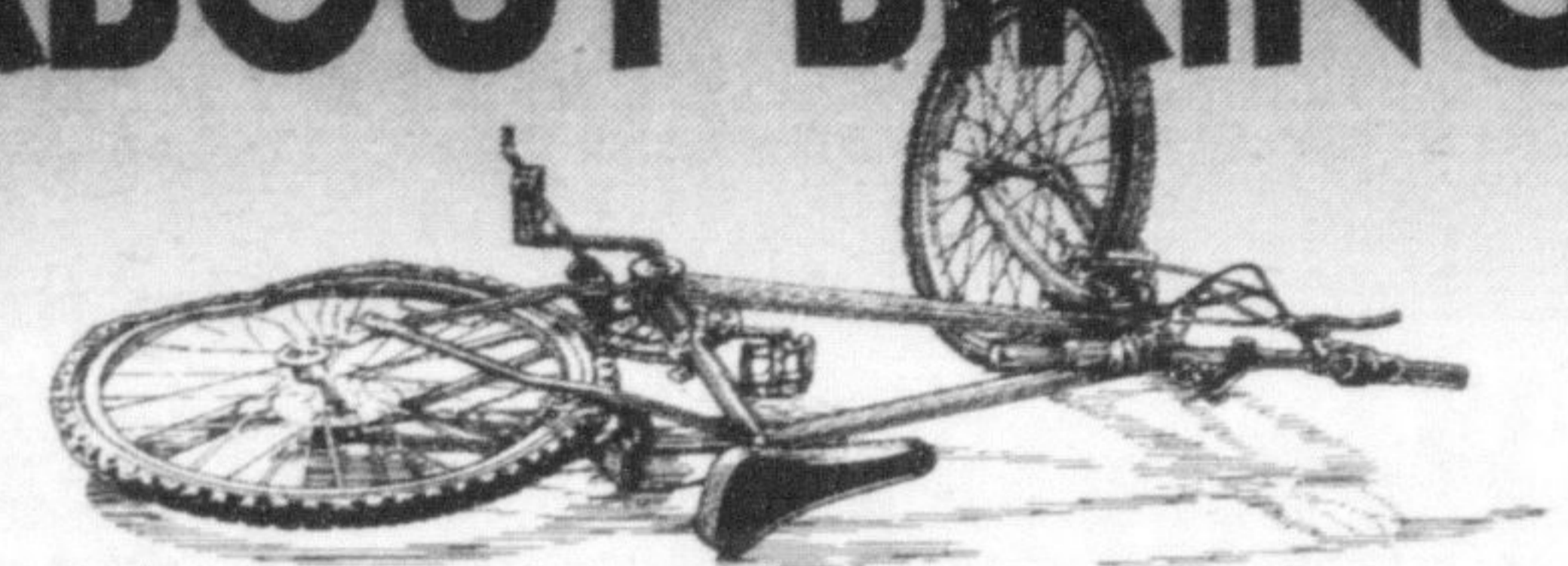
- Anger Problems
- Bipolar Disorder
- Career Transition & Development
- Eating Disorders
- Generalized Anxiety Disorder
- Grief & Loss
- Health Anxiety
- Major Depressive Disorder
- Marital Distress & Conflict
- Obsessive Compulsive Disorder
- Panic Disorder & Agoraphobia
- Phobias
- Post Traumatic Stress Disorder
- Relational Conflict & Problems
- Social Anxiety & Shyness
- Stress Management

Our approach relies upon up-to-date research and established practices in the fields of Clinical and Counselling Psychology, including Cognitive Behaviour Therapy.

311 Commercial Street, Suite 108, Milton, Ontario L9T 3Z9
t 905-878-9665 f 905-878-0868
email: info@tmurphy.com web: www.tmurphy.com

T. Murphy Psychology Professional Corporation

GET DEFENSIVE ABOUT BIKING.



Protect yourself when biking this season: wear a helmet every time you ride, don't weave in and out of traffic, and follow local laws and guidelines for riding. If you're driving, watch for bicyclists riding in the road.

We can all share the road this summer.

Look for your Covers flyer in today's paper

Covers
Blinds, Drapes, Bedlinens
The store is the factory!

BAMBU ROMAN SHADES
Check for savings with our 10% off coupon. Includes 10% off on all Roman shades. Excludes all other discounts. Coupon valid on all orders. *Some restrictions apply. See store for details.

PATIO DOOR BAMBU SLIDER BLIND
SPECIAL BUY 7'6" W x 6'3" L \$169.95 (reg. \$249.95)

ROMAN AND SLIDER BLINDS IN THE NEWEST MATERIALS
TRUESIDE ROMAN SHADE
TRUESIDE SLIDER BLINDS

Selected Area's