

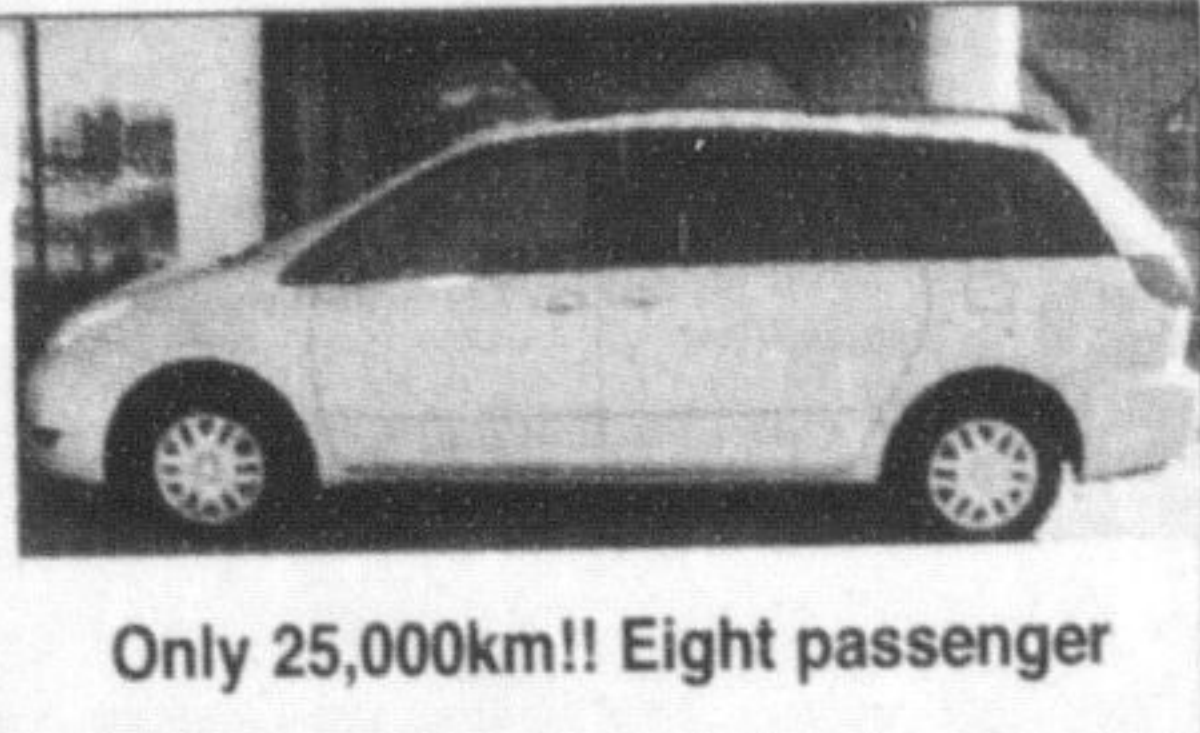
# GORRUD'S AUTO

Some dealers like to talk about anything other than warranties.

Gorrud's would rather talk about our warranties than anything else.

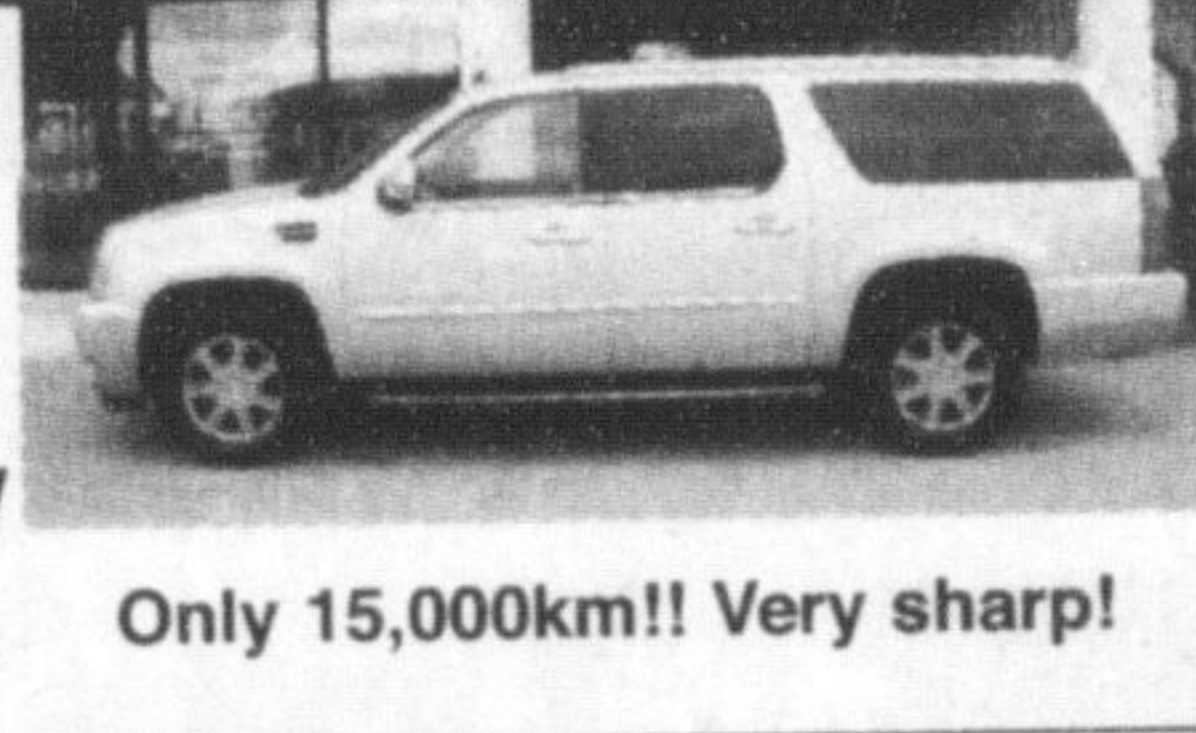
www.gorrudsautogroup.com

**THIS WEEK'S SPECIAL!**  
**2006 TOYOTA SIENNA LE**  
**\$28,990**



Only 25,000km!! Eight passenger

**THIS WEEK'S SPECIAL!**  
**2007 CADILLAC ESCALADE ESV**  
**\$59,995**



Only 15,000km!! Very sharp!

**THIS WEEK'S SPECIAL!**  
**2006 CHEVROLET UPLANDER LT EXTENDED**  
**\$19,990**



Only 26,000km!! Quads, rear air, leather inserts



**2006 CADILLAC CTS**  
**\$32,995**



**2006 CHEVROLET IMPALA LS**  
**\$18,995**

**COMING SOON!**  
**2007 CHEV AVALANCE LT 4X4**  
**ONLY 200 KM!!**  
**LEATHER, HEATED SEATS & MUCH MORE!**



**2002 BUICK RENDEZVOUS**  
**\$13,995**



**2006 PONTIAC SOLSTICE**  
**\$28,995**



**2003 PONTIAC MONTANA**  
**\$10,995**



**2003 CADILLAC CTS**  
**\$22,950**



**2005 SATURN RELAY EXT.**  
**DVD, LEATHER & MORE!**  
**\$21,995**



**2006 TOYOTA MATRIX**  
**\$18,890**

TOYOTA	Camry 2.4 SE	\$26,995
<b>2006</b>		
BUICK	Lucerne CXL V6	\$27,990
CADILLAC	CTS 2.8L	\$32,995
CADILLAC	DTS Luxury II	\$32,995
CADILLAC	SRX 3.6 V6 <b>SOLD</b>	\$39,550
CHEVROLET	Cobalt LS	\$14,900
CHEVROLET	Cobalt LT	\$16,995
CHEVROLET	Express 2500 Extended Cargo Van	\$24,990
GMC	Savana 2500	\$25,950
GMC	Yukon 4x4	\$29,995
HONDA	CR-V 2.4 EX-L Auto	\$32,995
HUMMER	H3 Luxury Package 4x4 <b>SOLD</b>	\$42,550
HYUNDAI	Sonata GL	\$18,999
LEXUS	ES330 Special Edition	\$42,990
NISSAN	Maxima 3.5 SE 5-Seat Auto	\$26,995
PONTIAC	G6 V6	\$21,990
PONTIAC	Grand Prix	\$20,990
PONTIAC	Pursuit	\$14,995
PONTIAC	Solstice Convertible	\$28,990
TOYOTA	Corolla CE 'C' Package	\$17,790
TOYOTA	Corolla CE 'C' Package	\$18,795
TOYOTA	Corolla CE 'C' Package	\$18,795
TOYOTA	Corolla CE 'C' Package	\$18,795
TOYOTA	Corolla CE 'C' Package	\$18,795
TOYOTA	Corolla CE 'C' Package	\$17,790
TOYOTA	Corolla CE 4AT	\$17,790
TOYOTA	Corolla CE 4AT	\$17,790
TOYOTA	Rav4 2.4 Limited 4wd	\$30,900

<b>2005</b>		
CHEVROLET	Equinox LS	\$19,338
HYUNDAI	Santa Fe GLS V6 2.7 AWD	\$21,995
TOYOTA	4Runner Limited V6	\$39,995
TOYOTA	Corolla CE 'C' Pkg.	\$13,995
TOYOTA	Echo	\$13,495
TOYOTA	Matrix XR 4WD 4AT	\$22,990
TOYOTA	Rav4 AWD Plus Pkg.	\$28,995

<b>2004</b>		
BUICK	Rendezvous CX	\$19,995
FORD	Expedition Eddie Bauer 4x4	\$17,888
FORD	F-150 Lariat Crew Cab 4x4	\$29,995
FORD	F-150 XLT Crew Cab 4x4	\$25,995
FORD	Focus ZX5 Premium	\$13,990
FORD	Ranger X-Cab Stepside	\$18,290
GMC	Envoy XL SLE 4x4	\$23,995
HONDA	Accord EX-L 5AT	\$24,995
LEXUS	RX330 4x4	\$39,850
LINCOLN	Navigator Ultimate 4x4	\$35,995
NISSAN	Maxima 3.5 SE <b>SOLD</b>	\$21,950
TOYOTA	4Runner SR5 V6 Sport <b>SOLD</b>	\$28,990
TOYOTA	Camry LE 4AT	\$17,995
TOYOTA	Sienna LE 7 Passenger	\$24,895

<b>2003</b>		
CADILLAC	CTS Deluxe 5 AT	\$22,950
CADILLAC	Escalade 4x4	\$33,990
CHEVROLET	Impala LS <b>SOLD</b>	\$14,990

CHRYSLER	Sebring LXI Convertible	\$14,995
DODGE	Durango SLT Plus 4x4	\$18,995
DODGE	Grand Caravan Sport	\$15,900
FORD	Escape Limited 4x4	\$18,950
FORD	F-150 King Ranch 4x4 Supercrew	\$26,990
FORD	Focus ZTS	\$14,750
FORD	Taurus SEL	\$13,495
GMC	Envoy SLE 4x4	\$17,995
HONDA	Accord EX-L	\$18,995
HONDA	CR-V LX AWD	\$15,950
HONDA	Odyssey EX	\$22,450
HUMMER	H2 4x4	\$42,995
INFINITI	G35 Luxury	\$24,695
JEEP	Liberty Limited 4x4	\$15,995
LEXUS	ES300	\$28,950
MAZDA	Protege5 ES	\$28,950
NISSAN	Maxima SE	\$17,495
NISSAN	Maxima SE	\$18,495
PONTIAC	Grand Am SE1	\$9,989
PONTIAC	Montana	\$10,995
TOYOTA	4Runner Limited V8	\$28,995
TOYOTA	SR5 4x4	\$26,995
TOYOTA	Corolla CE	\$13,995
TOYOTA	Corolla LE 4AT	\$11,950
TOYOTA	Corolla S	\$14,995
TOYOTA	Solara SLE V6 Convertible	\$19,995

<b>2002</b>		
BUICK	Century Custom Special Edition	\$7,895
CHEV	S-10 LS Extended Cab	\$15,995
DODGE	Caravan SE	\$12,995
DODGE	Dakota Quad Cab Sport	\$13,495
HONDA	Accord SE 4AT	\$14,395
HONDA	Civic DX 4AT	\$13,695
HYUNDAI	Santa Fe GL FWD	\$10,990
HYUNDAI	Sonata GL	\$10,995
MAZDA	B-Series SX 2.3L Regular Cab	\$11,995
MAZDA	Protege LX 2.0	\$12,895
MAZDA	Protege SE	\$11,595
MAZDA	Protege ES	\$13,995
MAZDA	Protege ES	\$14,999
MAZDA	Protege ES	\$14,995
NISSAN	Altima 3.5 SE	\$17,595
NISSAN	Pathfinder LE 4x4	\$22,995
NISSAN	Xterra SE 4x4	\$18,495
PONTIAC	Sunfire	\$8,995
SATURN	S-Series SL1	\$10,595
SATURN	S-Series SL1	\$10,995
SUZUKI	XL-7 J1X 4x4 <b>SOLD</b>	\$12,895
TOYOTA	Camry LE 4AT	\$17,995
TOYOTA	Highlander V6 AWD 'B' Pkg.	\$21,950
TOYOTA	Rav4 'B' Pkg.	\$15,991
TOYOTA	Sienna XLE	\$17,990

<b>2001</b>		
HONDA	Odyssey EX	\$16,995
HYUNDAI	Elantra VE	\$7,895
OLDSMOBILE	Aurora 3.5	\$11,995

**All Gorrud's Vehicles Are:**



This includes: Lien Search, Registration Search, Accidental Claims, Odometer Records for the U.S. and Canada

**THE GORRUD'S DIFFERENCE**

**SATISFACTION GUARANTEED**  
30 DAY / 2500 KM EXCHANGE POLICY

**PRICE GUARANTEED**  
7 DAY PRICE PROTECTION

**MECHANICAL GUARANTEED**  
30 DAY 100% MECHANICAL WARRANTY

**LONG TERM GUARANTEED**  
6 MONTH/10,000KM POWERTRAIN WARRANTY

**PEACE OF MIND GUARANTEED**  
WE STATE IT ALL IN WRITING

# GORRUD'S AUTO

410 STEELES AVENUE, IN MILTON 1-800-731-6580

OPEN SUNDAYS 11:00 AM TO 4:00 PM

OVER 250 VEHICLES IN STOCK

# Honda dealership approved

Landowner makes deal with Meritor, which had concerns about dust

By Melanie Hennessey  
CANADIAN CHAMPION STAFF

Honda can roll into Milton now that town council has given its proposed dealership the green light.

The business, planned for the southwest corner of Steeles Avenue and Martin Street, received approval from council at its meeting Monday night.

After last week's administration and planning committee, the future of the dealership appeared uncertain due to worries raised by nearby business Meritor Suspension Systems.

It was concerned that with Honda's vehicles parked outside, it would be at risk of not complying with the Province's new air pollution regulation, meaning dust from Meritor could land on the cars and potentially result in complaints.

But a staff report presented to council Monday explained Meritor and Honda's landowner have since met and decided the issue can be resolved through a private agreement.

Local businessman Stan Roberts, who owns the property at the southeast corner of Steeles and Martin, told council he couldn't understand the concern about dust in the first place.

"We've put up with dust on that corner for years," he remarked.

He went on to say, "I welcome a Honda. I think it would be a great addition to town."

Ward 4 Councillor John Challinor requested that once a site plan is developed, staff bring it back for council's review. He highlighted the various concerns that were raised about the dealership, such as its lighting, fencing and hours of operation, and asked that they all be taken into consideration.

Council passed a bylaw to amend the property's zoning from a future development zone to a site-specific employment zone to make way for the dealership.

Melanie Hennessey can be reached at [mhennessey@miltoncanadianchampion.com](mailto:mhennessey@miltoncanadianchampion.com).

# Volpe enters mayoral race

Miltonian Al Volpe is taking another shot at town council's top job.

The local resident, who ran against incumbent Mayor Gord Krantz and four other candidates in the 2003 election but was unsuccessful, filed his papers this week to again run for mayor November 13.

Three years ago he secured 701 votes, putting him in third place behind Krantz and current Wards 2 and 4 councillor candidate Rick Malboeuf.

This time, he's going up against Krantz and newcomer Gerry Marsh.