

Core's Pump Service & Well Drilling

- Well Rehabilitation
- Well Cleaning
- Flow Rates
- Water Treatment
- Reverse Osmosis Drinking Water Systems
- UV Sterilization Systems
- Complete Pumping Systems

Rod Core Tel: (905) 854-4515 Cell: (905) 691-6118

REPAIRS

to all makes and models of **SMALL ENGINES**

CONSTRUCTION EQUIPMENT • CHAINSAWS
LAWN & GARDEN

KOHLER engines **Husqvarna**
Cub Cadet

PICK UP & DELIVERY

HALTON POWER EQUIPMENT

20 MAIN STREET, MILTON 875-3286

"Oldest Family Owned and Operated Business on Main Street"



lessor motors
Trust and Tradition Since 1953
388 Main Street

46TH ANNUAL

STEAM-ERA

Where Your Heritage Comes Alive!

LABOUR DAY WEEKEND

SEPT 1ST - SEPT 4TH @ MILTON FAIRGROUNDS

This year marks the 46th year for Steam-Era at the Milton fairgrounds. The show will be on throughout Labour Day weekend starting Friday September 1st until Monday September 4th at 5pm. This year's show will feature a new theme for 2006 presenting the "Evolution of the Harvest" and will show the various methods of harvesting grain man has developed showing the earliest types of hand tools to the development of mechanical machines. An evolutionary display with an educational experience!

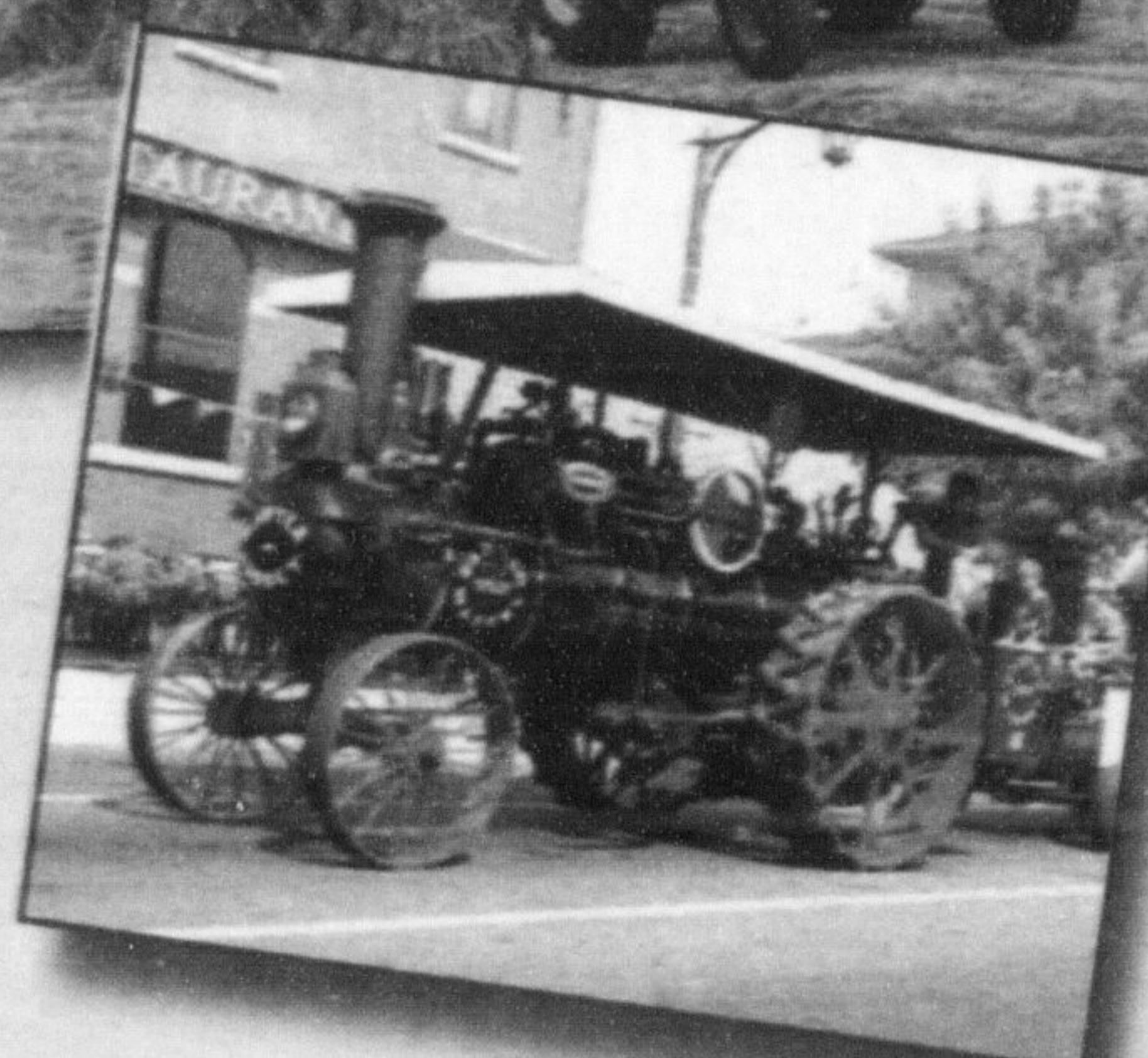
Each day activities will be on going throughout the grounds. Small models of all descriptions will be on display, including live steam locomotives which will be in operation on specially set up track. Rides will be available for children. There will be many different scale model traction engines not to mention the usual compliment of full size steam engines in daily operation.

Stroll through the gas engine area and see hundreds of small and large hit and miss engines. Continue your adventure throughout the crafts building with all sorts of knitted, sewn and quilted items. See arts and crafts, buy some baked goods and you can continue your stroll to the flea market area or models building. Hundreds of hours have been spent by talented machinist making intricate scale working models for you to see. From there you can go to the toy and train building, do some shopping or stop in the food court area.

Check the events schedule for grand stand activities at the "Browns Fuel" main stage. There will be tractor and steam engine skills demonstrations at various times. The threshing competition takes place Saturday Sunday and Monday at 3pm pitting rival threshing crews against the clock to stook, load, and belt up. Then thresh a load of grain using steam engines and big turn of the century gas tractors just like you would have seen in the early 1900's.

The antique cars will be on display in field along with every size, color and make of vintage tractor you care to mention. See them all in the "Grand Parade" each day from the grand stands at 4pm. After the parade have some supper, take in the corn roast and stay for the evening entertainment. Friday night at 7:30 Alisha Brooke will be appearing on stage. Saturday night will be the 29th Annual Country Western Talent contest and Sunday at 5:30pm watch for the mini tractor pulls followed at 7:30pm by "Settlers Creek" live on the Browns Fuels sponsored stage playing popular country western music. Don't forget the best steamed corn you will find anywhere, guaranteed!

Adult admission is \$6.00 on Friday and \$7.00 Saturday,



Sunday and Monday, Children under 12 with an adult are free. An adult weekend pass can be purchased for \$15.00 if you wish to come more than one day or evening. Entrances are at Thomas St. and at Robert St. Visit www.steam-era.com online for more information. There is entertainment for everyone at Steam-Era "Where our Heritage Comes Alive".

KID'S ACTIVITIES

- Pedal Tractor Pulls
- Log Sawing
- Bag Tying Competition
- Junior Talent Contest Saturday at 1 p.m.

PLATINUM

Kitchens, Baths & Beyond Inc.



"Our designers will create a style customized to meet your needs & budget"

- Glazed Finished Cabinets
- Brushed Nickle Faucets
- Granite & Corian Countertops

COME VISIT OUR SHOWROOM

905-878-6666

18 Thompson Road, Milton

www.platinumhomeimprovements.com

ROBERT (PIE) LEE INSURANCE AGENCY

Life - Disability - Annuities - RRIFs - LIFs - RRSPs - Mutual Funds (M.S.F.L.) - RESP's

Celebrating 31 years of "Home Town" Business



Bob "Pie" Lee
bob@robertleeinsurance.com

Kim Mitchell
kim@robertleeinsurance.com

245 Commercial St. Milton L9T 2J3
OFFICE 878-5786 FAX: 878-3692

46TH ANNUAL

STEAM-ERA

www.steam-era.com

Where Your Heritage Comes Alive!

LABOUR DAY WEEKEND

SEPT 1ST - SEPT 4TH @ MILTON FAIRGROUNDS

FRI. SEPT 1 @ 7:30 PM

ALYSHA BROOKE

SAT. SEPT 2 @ 7:30 PM

COUNTRY & WESTERN TALENT CONTEST

SUN. SEPT 3 @ 5:30 PM

MINI TRACTOR PULL

SUN. SEPT 3 @ 8:00 PM

"SETTLERS CREEK" COUNTRY WESTERN

4 DAYS ENDING ON LABOUR DAY
Corn Roast Every Night!

ADMISSION

Gates open at 8:00am

FRIDAY

Adults \$6.00

SAT. SUN. MON.

Adults \$7.00

Child 12 & Under

With Adult . . .FREE

Parking . . . \$2.00

Admission includes evening Grandstand shows

