

Long Steam-Era tradition continues this weekend

By Stephanie Thiessen
CANADIAN CHAMPION STAFF

For some, it's a trip down memory lane. For others, Milton's annual Steam-Era show provides insight into a way of life they've never known.

Grandparents often stroll hand in hand with their grandchildren, introducing them to the way things used to be, while city and country folk can be found chatting about their different lifestyles.

For the past 46 years, the Steam Era has been bringing young and old, rural and urban residents together.

This year's event, which will run from September 1 to 4 at the Milton

Fair Grounds, will be no different, said David Stirk, president of the Ontario Steam and Antique Preservers Association, which puts on the show each year.

The Steam-Era will include steam-powered operating sawmills, shingle mills, a thrashing demonstration and competition and much more, Stirk said.

"There'll be a dozen full-sized operating agricultural steam engines," he said.

He encourages attendees to talk to the steam engine owners about the machines, explaining most of them have many stories they're just waiting to tell.

For vehicle enthusiasts, the show will include a wide variety of antique cars and vintage tractors from the early 1900s on.

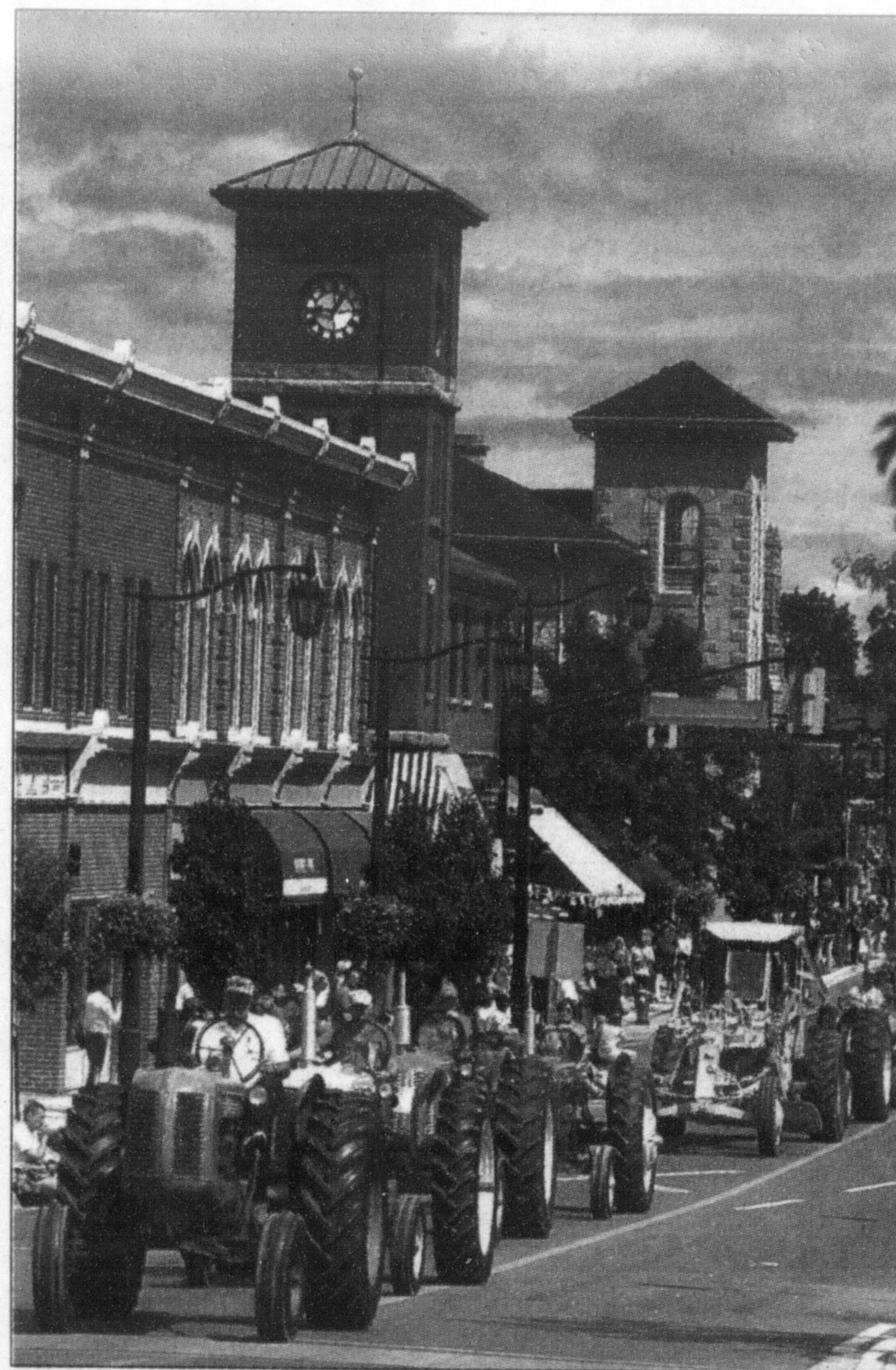
An antique flea market may yield some treasures, as might the craft building, which will also feature home baking.

In addition, there'll be a trading post filled with antique and vintage tools.

Each afternoon from about 4 to 4:30 p.m., there'll be a grand parade of all the equipment, Stirk said, as well as a steam-cooked corn roast.

"The corn roast will be ongoing — until the party's over, people leave, or we run out of corn, whichever happens

• see LOTS on page A5



FILE PHOTO BY GRAHAM PAINE

GRAND PARADE: Antique tractors travel along Main Street as part of last year's Steam-Era festivities.

Family Fun you can bet on!



MOHAWK
SUMMER
Nights
2006

Join us for Canada's richest race for 2 year-old pacers and the final Family Fun Night of the season, featuring clowns, henna artists, mini putt, pony rides, the Craft Zone, a special kids meal, and Xbox & Playstation games.

Saturday, September 2nd

Doors open at 5:30 pm

Admission and parking are free

www.WoodbineEntertainment.com

401 & Guelph Line 1-888-675-RACE

TM Trademarks of Woodbine Entertainment Group.



CAN YOU GIVE SOMEONE A LIFT?

Red Cross drivers help those in need get to medical appointments, adult day programs and other activities.

VOLUNTEER DRIVERS ARE ALWAYS NEEDED

CALL US TO LEARN HOW YOU CAN HELP.

(905) 875-1459

Canadian Red Cross



Difficult Mortgages.

Difficult mortgages are my specialty. You likely have more options than you think.

Call me to find out what they are...



Peter Fabry
BComm.
Mortgage Specialist



CENTUM

Looking out for your best interest™

CENTUM Mortgage Masters Inc.
459 Main Street East
Milton, ON L9T 1R1

Business (905) 864-8574

Fax: (905) 864-8543

Direct: (647) 201-5655

Email: peter_fabry@centum.ca

Each Office is Independently Owned and Operated