

Gravel pit hearing to continue next month, should wrap up

After spending about a year-and-a-half before the Ontario Municipal Board, it looks like the Campbellville Sand and Gravel hearing may finally wrap up next month.

The hearing is set to reconvene on September 11 at the Halton Regional Centre.

Five days have been set aside to deal with the matter that stems from a Ministry of Natural Resources (MNR) proposal to amend the pit's site plans to prohibit further extraction and limit the fill being dumped at the rural property.

The proposal also calls for a proper final grading maximizing the use of on-site materials to

rehabilitate the land.

Angelo Guerrieri, owner of the exhausted pit located on Campbellville Road, appealed the proposal to the OMB early last year.

He has since passed away, but his family requested that the hearing continue.

The new hearing is being held to address outstanding matters, which includes finalizing the wording of the amendment to the site plan to the board's satisfaction.

The matter has been delayed before the board several times now due to adjournments requested for various reasons.

One of the main concerns

that has been raised regarding the pit is the effect the potentially contaminated fill that was brought into the site could have on ground water, since it's located within a sensitive ground water recharge area that provides water to the Kelso municipal wells.

Guerrieri previously told The Champion on several occasions that any notion of ground water contamination isn't true.

The hearing will start at 10 a.m. in the Glenorchy/Dakota room in the Halton Regional Centre, 1151 Bronte Rd., Oakville.

Tractor-trailer units collide on 401

Garbage was strewn across the roadway and traffic backed up for hours in and out of Milton after two tractor-trailers collided early yesterday morning on Hwy. 401.

OPP spokesperson Const. Julia McCuaig said that at about 3:30 a.m. a truck carrying garbage traveling westbound — just east of Guelph Line — jackknifed into the centre median.

A second tractor-trailer car-

rying plastics then smashed into it.

Both drivers, plus a passenger from one of the trucks were sent to Milton District Hospital for cuts and bruises.

"They were very lucky. It could have been a lot worse," McCuaig said.

Traffic was re-routed as all westbound lanes were closed between Guelph Line and Regional Road 25.

The left lane on Hwy. 401 eastbound was also closed as officials cleared debris.

"The eastbound traffic was backed up about eight kilometres at one point," McCuaig said.

At about 10 a.m., all lanes were re-opened.

At press time yesterday it wasn't known what caused the collision nor if charges would be laid.

Hurry... Sale Ends Aug. 31st

CANADA-WIDE CLEARANCE EVENT

Financing Available up to 60 months

Only 23 Torrents Available!

BRAND NEW PONTIAC
06 TORRENT

BRAND NEW PONTIAC
06 PURSUIT

3.4L 185 hp V6 Engine, A/C, Fog Lamps, 5-Spd. Automatic Trans., 16" Aluminum Wheels, 6-Speaker CD Stereo, Remote Keyless Entry, Removable Panels, Fold Flat Front Passenger Seat & more.

\$25,585 ^{Wallace Price} **0%** ^{Financing Available up to 60 months}

2.2L 145-HP Ecotec Eng., 5-spd Getrag manual trans., CD ster., 15" wheels, Spoiler, 60/40 split folding rear seat, 5-yr/100K kms. GM Powertrain Warr. w/\$0 deductible

\$14,998 ^{Wallace Price} **\$142** ^{per month + tax} **20%** ^{lease rate}



BRAND NEW PONTIAC
06 VIBE 5DR

BRAND NEW PONTIAC
07 MONTANA SV6

1.8 Litre eng., 4 cylinder, 6 speed manual, Air conditioning, CD stereo system

\$18,488 ^{Wallace Price} **\$169** ^{per month + tax} **29%** ^{lease rate}

3.5L 201-HP SFI eng., 4W disc brakes w/ABS, OnStar w/1-yr. Safe & Sound Plan, A/C, CD/MP3 player, 17" wheels, remote keyless entry, pwr. pkg., tint, 5 yr./100K kms. GM Powertrain Warr. w/\$0 deductible.

\$21,095 ^{Wallace Price} **\$229** ^{per month + tax} **54%** ^{lease rate}



BRAND NEW CADILLAC
06 CTS SEDAN

BRAND NEW PONTIAC
06 G6 SEDAN

6 spd. manual transmission, 4 dr., pwr. grp., 4 yr. 80K kms. Cadillac Warranty w/4yr. Maintenance Program

\$33,998 ^{Wallace Price} **\$319** ^{per month + tax} **0.5%** ^{lease rate}

2.4L 167-HP ECOTEC Engine, Automatic transmission, Keyless remote entry, Power windows & locks, 16" wheels, Air conditioning, 4 wheel disc brakes, Electric power steering and more.

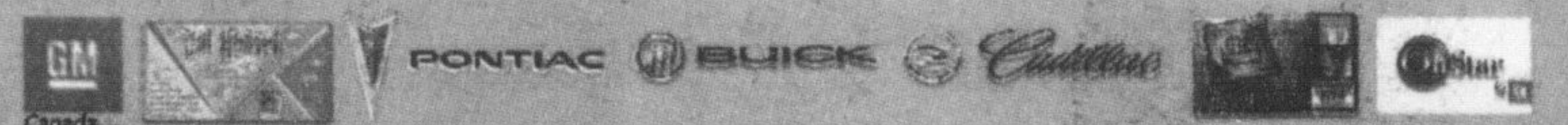
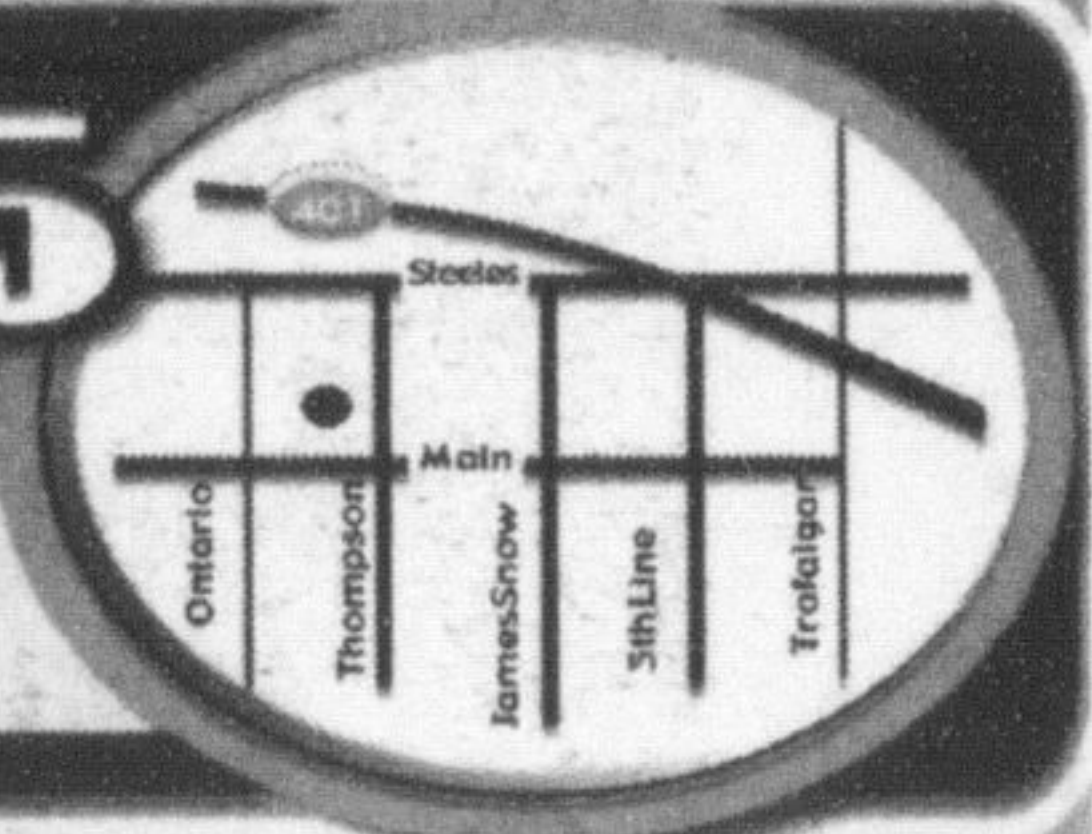
\$22,498 ^{Wallace Price} **\$219** ^{per month + tax} **125%** ^{lease rate}

Wallace

PONTIAC • BUICK • CADILLAC

905-878-2355

801 MAIN ST. E. MILTON, ONT.
www.wallacepontiac.com • tollfree 1-888-878-2354
MON. - THURS. 9:00 AM - 9:00 PM, FRI. & SAT. 9:00 AM - 6:00 PM



*Smartlease are based on 48 mths and include 100,000 km with \$0.15 over and are plus freight. †Cash prices are plus freight, taxes and license fee. Pursuit - \$4,333. Vibe - \$6,076 due on delivery. G6 - \$5,955 due on delivery. Montana - \$7,000 due on delivery. CTS - \$7065 due on delivery. All rebates assigned to dealer. Some restrictions apply. †0% financing is OAC. Fin. Example: \$20,000 at 0% over 60 mo. = \$333.33, C.O.B. = \$0, total cost of borrowing = \$20,000. Vehicles are for illustration purposes only and may not be exactly as shown. See dealer for details.

La Rose
Italian Bakery & Delicatessen

Fresh Bread and Buns Baked daily 7 days a week!

Fresh Back-To-School Lunches start at La Rose

- Fresh buns & bread baked daily
- Deli meats sliced fresh to your order
- Fresh vegetables & fruit

Bakery Special

Open Labourday Monday, September 4th 9 am to 5 pm

Soft Buns

White or Whole Wheat Round or Oblong

18¢ each
or **\$1.99/dozen**

Fresh Produce No. 1 Grade

Product of Ontario

Celery Stalks

99¢ ea

Product of USA

Nectarines

99¢ ea

Product of Ontario

Peaches

99¢ lb

Brandt's Honey Maple Ham

\$3.99 lb
OR \$0.88/100g

San Daniele Mortadella Lean or Hot

\$4.49 lb
OR \$0.99/100g

Hungarian Salami

\$5.99 lb
OR \$1.32/100g

Casa Italia Porchetta Classic, Rosemary or Hot

\$6.99 lb
OR \$1.54/100g

SPECIALS IN EFFECT FROM TUESDAY, AUGUST 29TH TO MONDAY, SEPTEMBER 4TH, 2006. WHILE QUANTITIES LAST.

327 Bronte Street S. • White Oaks Plaza
905-875-0303

| | | |
|----------------------------|-----------------------|------------|
| REGULAR STORE HOURS | | Bronte St. |
| Mon.-Thurs. 8:30 am - 7 pm | Friday 8:30 am - 8 pm | X |
| Saturday 8:30 am - 6 pm | Sunday 9:00 am - 5 pm | Derry Rd. |
| | | Main St. |