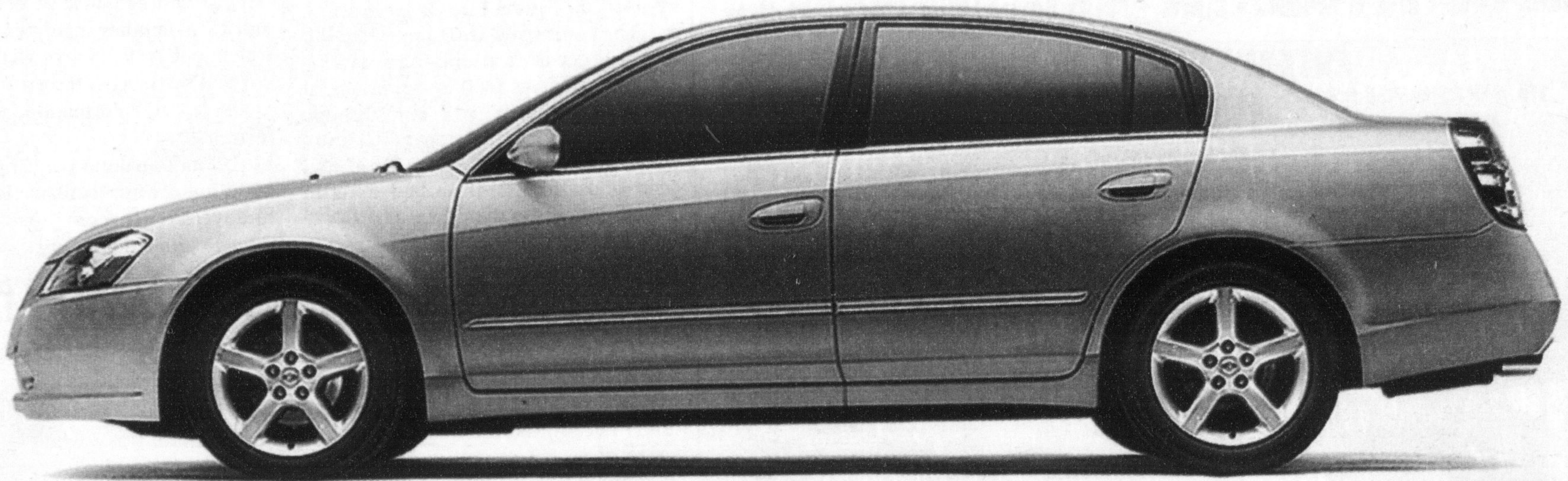


NORTH END NISSAN

160,000 KMS†



3.5 SE Model Shown

NISSAN ALTIMA 2.5 SPECIAL EDITION

WELL EQUIPPED AT \$27,298

165-HP, 2.5-Litre DOHC Engine, Power Windows, Locks and Heated outside Mirrors, ABS, 6-Way Adjustable Drivers Seat with Lumbar Adjustment, Washable Cargo Floor, AM/FM/CD, A/C, Remote Keyless Entry, And over 55 more standard features ...
Fuel Efficiency: Highway 36 MPG (7.8L/100km)
City 27 MPG(10.5L/100km)

LEASE \$298 FOR 0 DOWN

FREIGHT INCLUDED. Rates from zero percent.

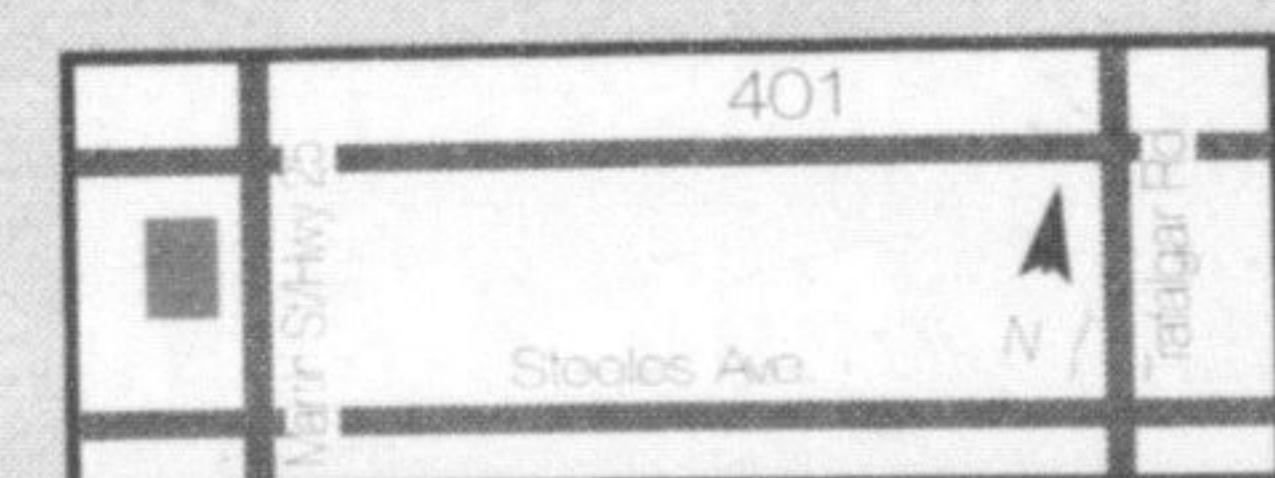
BEST BACKED ENGINE WARRANTY IN THE BUSINESS†

HURRY IN BEFORE THEY ARE ALL GONE!

Milton's
**NORTH END
NISSAN** LTD.

610 MARTIN STREET, MILTON
905-878-4137

SALES DEPT. HOURS:
Mon.-Thurs. 9:00 - 9:00
Fri. 9:00 - 6:00
Sat. 9:00 - 5:00



www.nissan.ca



SHIFT

60 mth lease, 24,000 kms per year, residual \$10,100.26, total lease obligation \$17,880, excess kms charge 10 cents per km., taxes, License & admin. fee extra. Finance example: \$20,000 at 0% over 24 months. Monthly payment is \$454.54 per month. COB is \$0 total obligation is \$20,000. †This special offer vehicle has an engine replaced by the factory. The engine portion of the new vehicle limited warranty has been extended to 84 months or 160,000 kilometers, whichever occurs first. Offers are available O.A.C. through Nissan Canada Finance for a limited time, may change without notice and cannot be combined with any other offers. The Nis-san names, logos, product names, feature names and slogans are trademarks owned by or licensed to Nissan Motor Co. Ltd. and/or its North American subsidiaries.