

MCRC's new facility almost done

By Melanie Hennessey
CANADIAN CHAMPION STAFF

A "unique" and "homey" child care experience is what Milton Community Resource Centre (MCRC) staff say local parents can expect at its new facility, set to open next month.

Called the Bronte Street School Child Care Centre, the facility will be located within the MCRC's new 21,500-square-foot home in the Bronte Corporate Centre.

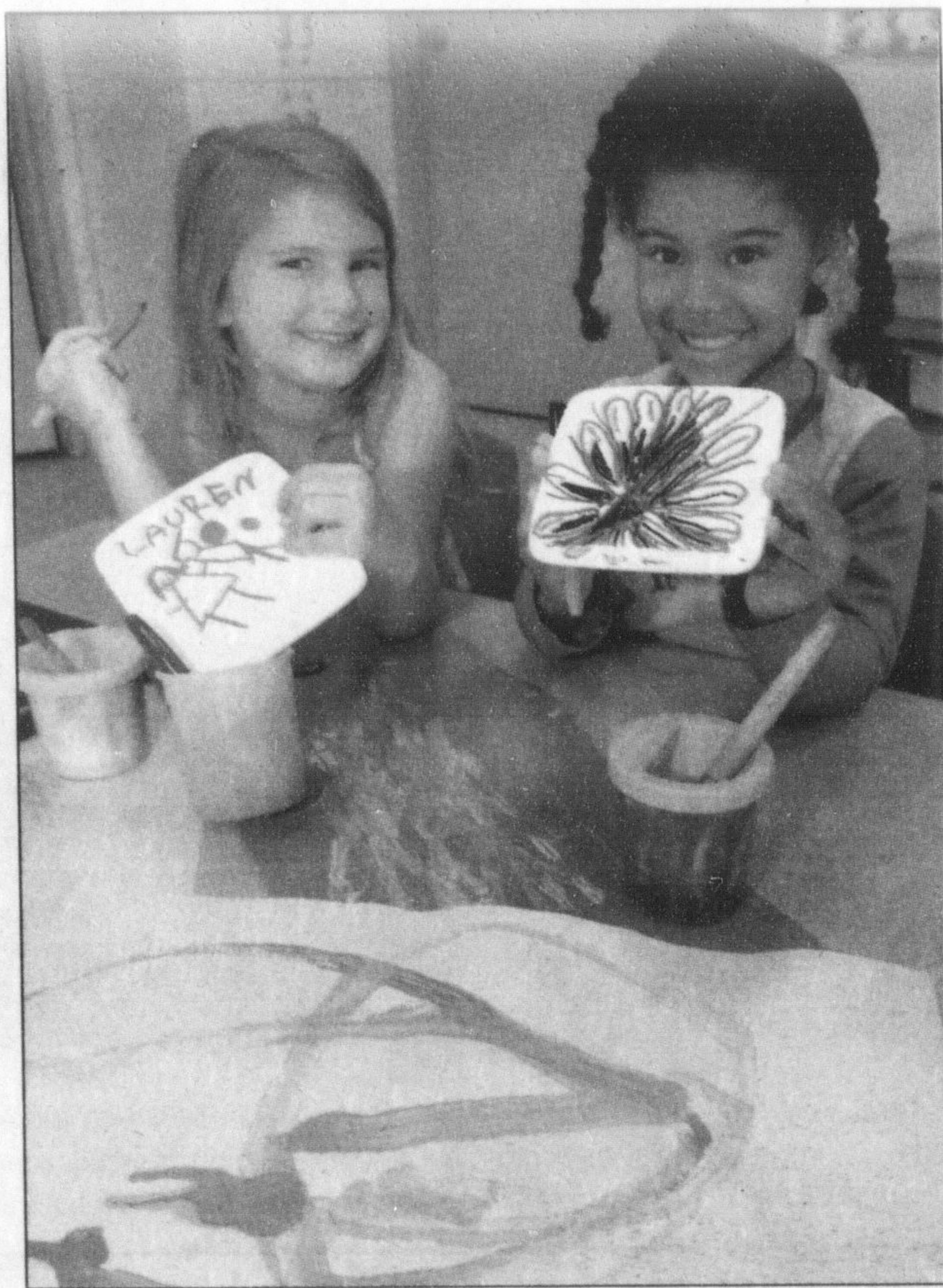
"We're so excited to be opening," said Kate Williamson, MCRC's outreach co-ordinator. "When people see this (centre), I think they're going to be blown away. It's going to be something really special for the Milton community."

The child care centre will offer toddler, preschool and kindergarten programs that Williamson said will follow an interesting philosophy called 'Reggio Emilia' — a method used in Italy that the MCRC has been implementing for the past seven years.

"It's a way of using the child as the teacher," explained Williamson.

For example, she said at the MCRC's current location, some of the kids in their care were asking what the construction noise outside was all about.

So, instead of just talking about it, see **OUTSIDE** on page B5



GRAHAM PAINE / CANADIAN CHAMPION

CREATIVITY AT WORK: MCRC art camp participants Lauren Lamers, 5, and Caleigh Calford, 6, show their plate artwork. The new centre on Bronte Street will offer a new art studio for kindergarten-aged students.

HINT #45
A one-of-a-kind hat

Read
Reuse
Recycle

Once you have finished reading the newspaper, don't throw it away. Find another use for it. Newspaper makes awesome party hats, sure to garner attention. As soon as the boss' party is over, take the used newspaper to a recycling center near you.

By Canadian Champion
905-878-2341
875 Main Street, Milton
Classified@miltoncanadianchampion.com

IS SOMEONE YOU KNOW CAUGHT IN THE GAME?

We can help...

ADAPT
Problem Gambling Services

- Free
- Professional
- Confidential

905-893-4250

Find Out What Your Home is Worth On-Line

Visit:
www.haltonhomeevaluation.com
Prudential Town Centre Realty Brokerage

cineplex
entertainment

Galaxy Milton
1175 Maple Ave. T: 905-864-1666

WHEELCHAIR ACCESS • PARTY ROOMS
STADIUM SEATING • 8 SCREENS CINEPLEX ODEON
Advance tickets available at Cineplex.com

INVINCIBLE (G) Fri. - Thu. 1:10, 3:50, 7:10, 10:10 P.M.

BEERFEST (18A) Fri. - Thu. 1:20, 4:10, 7:20, 10:15 P.M.

HOW TO EAT FRIED WORMS (G) Fri. - Thu. 2:4, 3:06, 5:09, 10 P.M.

WORLD TRADE CENTER (PG) Fri. - Thu. 1, 4, 7, 10 P.M.

SNAKES ON A PLANE (14A) Fri. - Thu. 1:50, 4:40, 7:30, 10:05 P.M.

ACCEPTED (PG) Fri. - Thu. 1:40, 4:20, 6:40, 9:20 P.M.

STEP UP (PG) Fri. - Thu. 1:30, 4:15, 7:15, 9:50 P.M.

BARNYARD THE ORIGINAL PARTY ANIMALS (PG) Fri. - Thu. 1:15, 3:40 P.M.

TALLADEGA NIGHTS: THE BALLAD OF RICKY BOBBY (PG) Fri. - Thu. 6:45, 9:30 P.M.

Showtimes Valid Friday, 8/25 thru Thursday, 8/31

Install Smoke Alarms
It's The Law.



The Ontario Fire Code requires that every home have working smoke alarms. Install them in your home or cottage today!

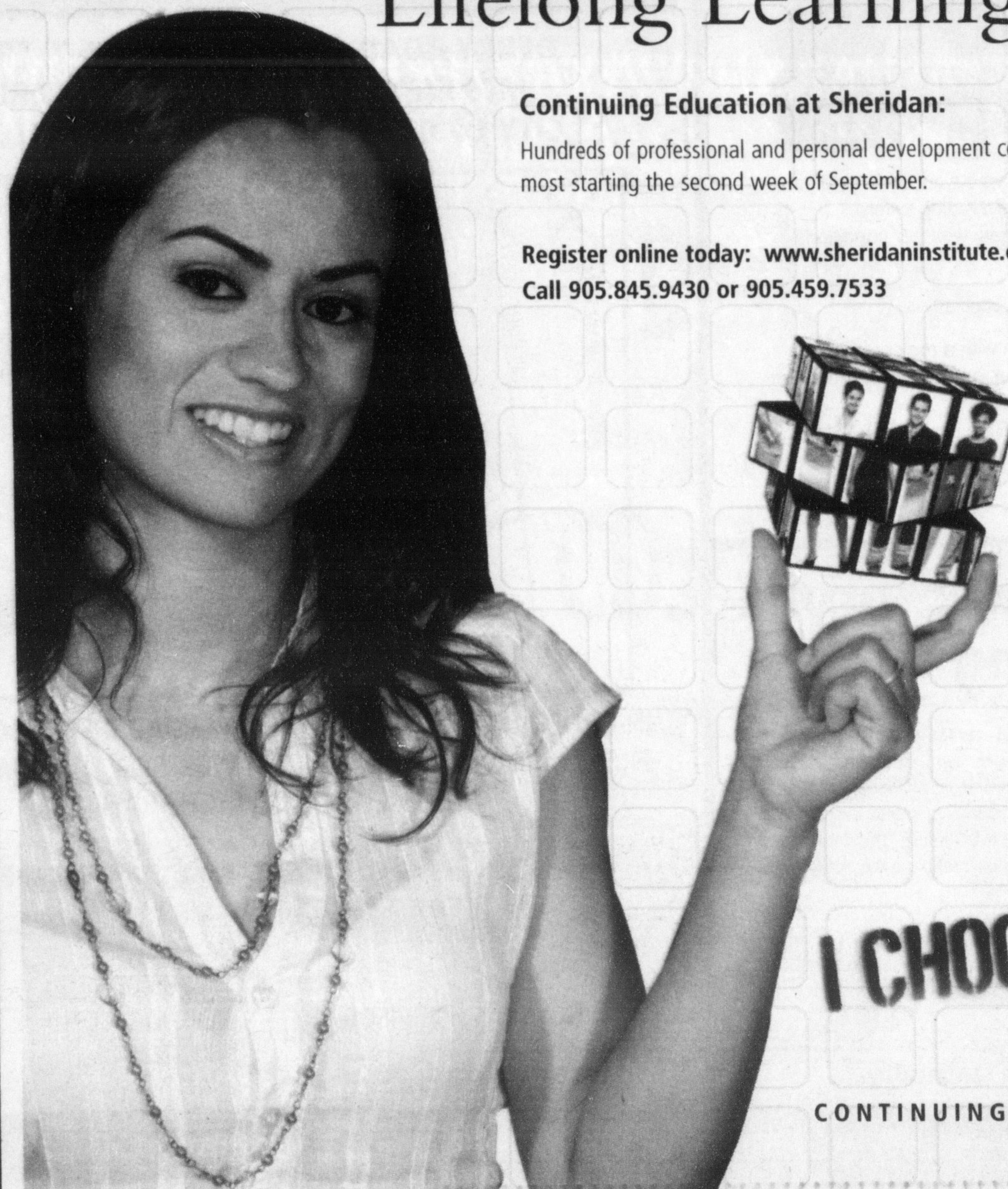


LEADERS in Lifelong Learning™

Continuing Education at Sheridan:

Hundreds of professional and personal development courses, most starting the second week of September.

Register online today: www.sheridaninstitute.ca
Call 905.845.9430 or 905.459.7533



I CHOOSE
Sheridan
CONTINUING EDUCATION

NOW OPEN!

COME JOIN AVERAGE JOE'S FITNESS

30-minute fitness for Men

#3, 327 Bronte Street S., Milton
www.averagejoesmilton.ca

Contact:
Tel: (905) 876 0042
info@averagejoesmilton.ca