

We believe... in helping. Anyone. Anywhere.

PLEASE GIVE 905-875-1022



The Regional Municipality of Halton

NOTICE OF STUDY COMMENCEMENT

20 Side Road (Regional Road 34) Realignment from Milborough Line to First Line, Town of Milton Class Environmental Assessment Study

The Regional Municipality of Halton is initiating a Class Environmental Assessment to consider safety and traffic operational options for transportation corridor improvements on 20 Side Road (Regional Road 34) from east of Milborough Line to west of First Line, in the Town of Milton (see map below). In order to best address operational deficiencies along the 20 Side Road corridor, a number of road improvement alternatives will be examined as part of the study including realignment of the roadway, cross-sectional elements, driveway improvements, and over-all traffic operations, as well as the impact of such improvements on the social and natural environments.

This notice signals the commencement of the Class Environmental Assessment, a study which will define the problem, identify and evaluate alternative solutions, and determine a preferred solution in consultation with the Town of Milton, regulatory agencies, and the public. The study is being conducted in compliance with Schedule C of the Municipal Class Environmental Assessment (June 2000), which is approved under the Ontario Environmental Assessment Act.

A key component of the study will be consultation with interested stakeholders (public and regulatory agencies) at two Public Information Centres (PIC). The PICs will provide stakeholders with an opportunity to meet the Project Team, review the study scope and discuss issues related to the project including alternative solutions, environmental considerations and evaluation criteria. The first public meeting will be held in September 2006. Details regarding the forthcoming PICs will be advertised as the study progresses.

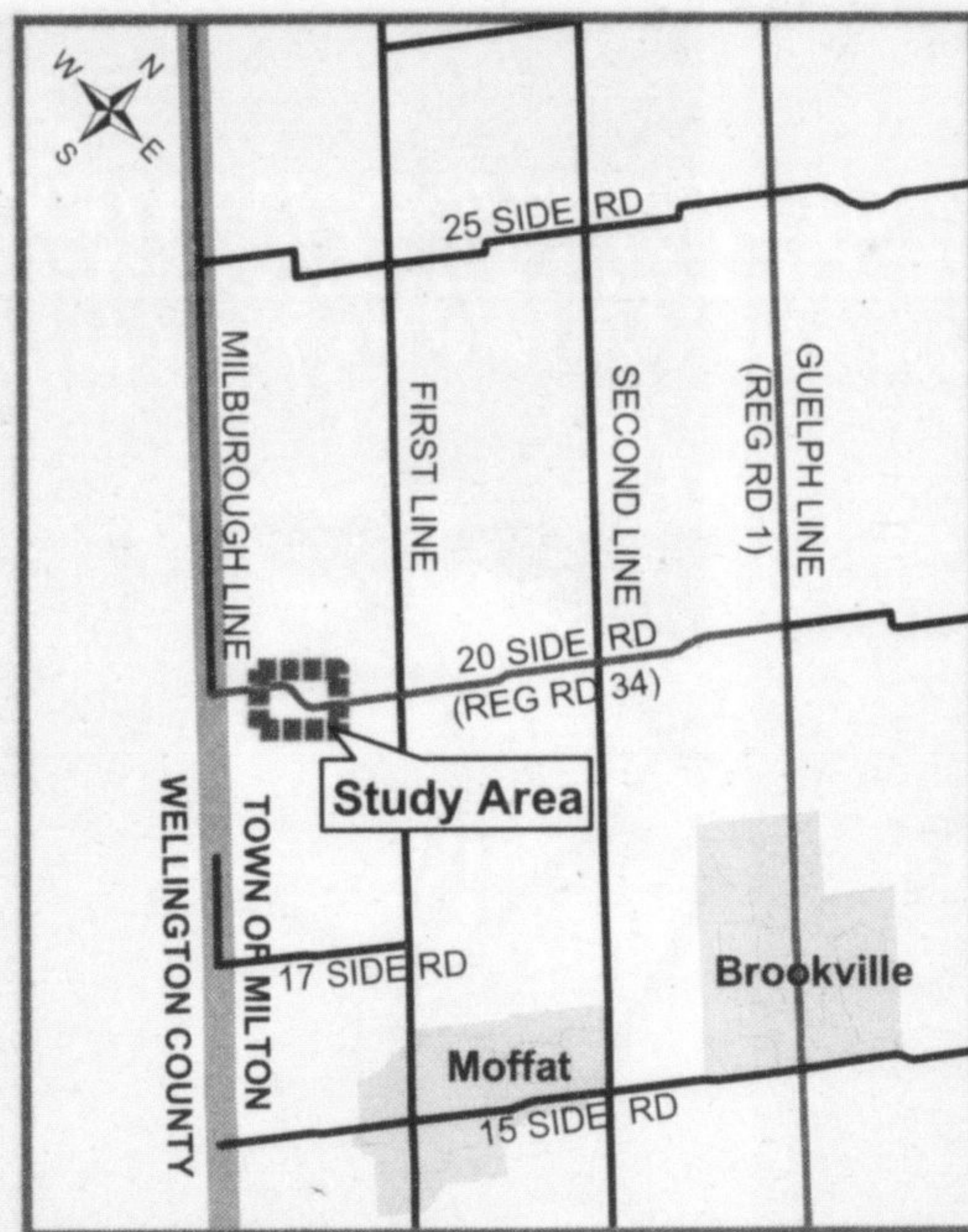
Information requests or questions may be directed to:

The map below shows the approximate limits of the study area.

Mr. Jeffrey Reid, C.E.T.
Project Manager
Regional Municipality of Halton
1151 Bronte Road
Oakville, Ontario L6M 3L1
Phone: 905-825-6000, ext. 7170
Toll Free: 1-866-442-5866
(1-866-4HALTON)
Fax: 905-825-8822
Email: jeffrey.reid@halton.ca

Mr. Michael Wilson, C.E.T.
Project Manager
Chisholm, Fleming and Associates
317 Renfrew Drive, Suite 301
Markham, Ontario L3R 9S8
Phone: 905-474-1458
Fax: 905-474-1910
Email: mike.wilson@ChisholmFleming.com

This Notice first issued on August 18, 2006.
www.halton.ca/currentEAProjects



1151 Bronte Road, Oakville, Ontario L6M 3L1
Tel: 905-825-6000 • Toll Free: 1-866-4HALTON • TTY: 905-827-9833 • www.halton.ca

Select girls hang on to tournament title

History repeated itself last weekend for the Magic Under-12 select girls, and they couldn't be happier about it.

A Vanessa Consiglio bottom left corner deposit with 10 minutes remaining allowed the local soccer team to eclipse Brampton 1-0 Sunday afternoon and — in the process — successfully defend their Mississauga Falcon Tournament title.

The championship win followed back-to-back second-place finishes in Ancaster and Newmarket.

Ending the weekend as tournament MVP, Consiglio led Milton's attack with four goals, two of them delivered in

Saturday's 3-1 decision over Oakville to kick-start the title drive.

Three of the Magic's four other goals came from Rebecca Hinton, who scored against both Oakville and Brampton in round-robin play and then highlighted her efforts with a header tally with under two minutes to go in Sunday's 1-0 semifinal triumph over Erin Mills.

Goalkeeper Danielle Vella stood tall to limit the opposition to just a pair of goals in five games, and received top-notch defensive support along the way — particularly from anchor Nicole Burgess.



Bantams fourth at Games

Milton's bantam girls baseball team suffered a double denial at the Ontario Summer Games in Ottawa Saturday.

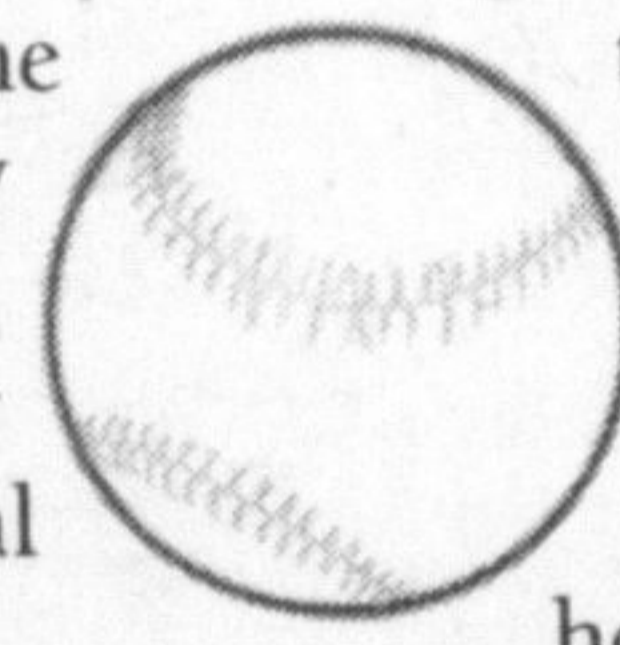
First the Monkeys' run to the championship was blocked by Birchmount, who after mercying them 21-10 in first-round play prevailed 11-9 in a semifinal rematch.

Milton held a 3-0 lead heading into the fourth inning, when Birchmount turned the tide.

Later in the day the Monkeys' bid for bronze fell short, as a 'too-little-too-late' performance ended 9-7 in favour of

North York. Rallying from its tournament-opening setback to Birchmount, Milton won three of its last four round-robin games — besting Annette (9-7), Guelph (18-17) and North York (8-7) — to reach the final four.

Robyn McColl had the only home run of the Ontario Summer Games for the Monkeys — an inside-the-park shot in the initial clash with Birchmount — while she, Desiree Malone, Allison Wallace and Rebecca and Stephanie Trischler delivered standout efforts in Ottawa.

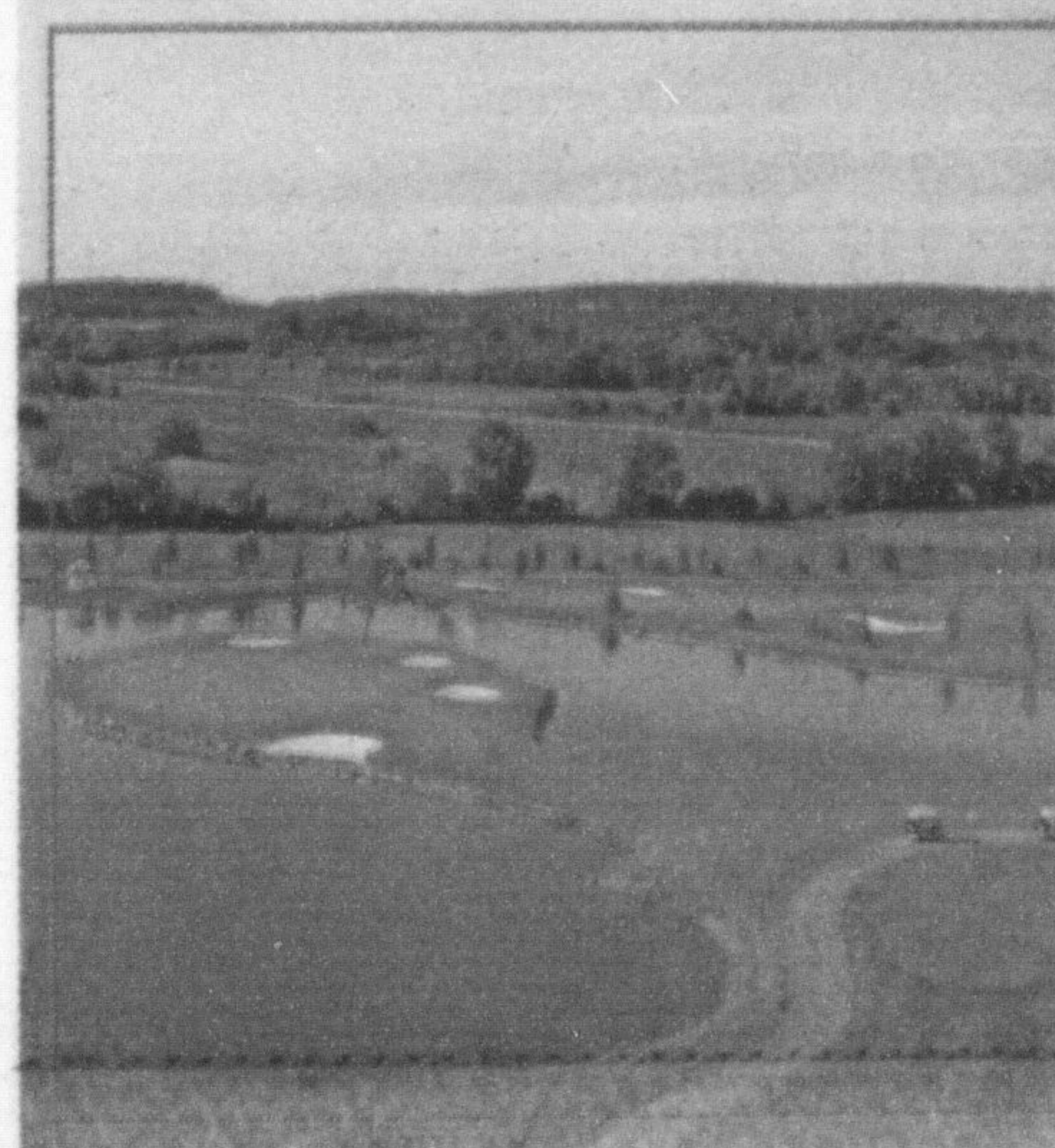


FUTURE SHOP
CORRECTION NOTICE
LG 42" Widescreen Plasma HDTV 10073023. This TV is advertised for \$1799.99 after a \$300 savings on p. 1 of our August 11th flyer. In fact, the price is \$2299.99 with no savings.
We sincerely apologize for any inconvenience this may have caused our valued customers.

11 Costly Home Inspection Pitfalls Free Report
Visit:
www.haltonhomeinspectionpitfalls.com
Prudential Town Centre Realty Brokerage

IS THE game PLAYING YOU?
We can help...
ADAPT
Problem Gambling Services
• Free
• Professional
• Confidential
905-893-4250

UNT 10 Tablecloth
Recycle
Once you have finished reading the newspaper, don't throw it away. Find another use for it. Newspaper makes wonderful tablecloths for outdoor occasions. After everyone is done eating, take the used newspaper to a recycling center near you.
The Champion
905-878-2341
875 Main Street, Milton
Classified@miltoncanadianchampion.com



- 18-hole Championship Golf Course
- Driving Range and Practice Facility
- Licenced Lounge and Bar
- Golf Tournaments
- Weddings and Receptions
- Private and Corporate Functions

Rates

- Monday to Thursday \$65
- Early Bird (weekdays before 8:30am) \$50
- Twilight (everyday after 3:00pm) \$50
- Weekends (Friday to Sunday & Holidays) \$75

CROSSWINDS

GOLF & COUNTRY CLUB

Twilight Rates
now starting at 3pm

6621 Guelph Line, Burlington, Ontario
(Just south of Derry Rd.)

www.crosswindsgolf.com Tel: (905) 319-5991

