

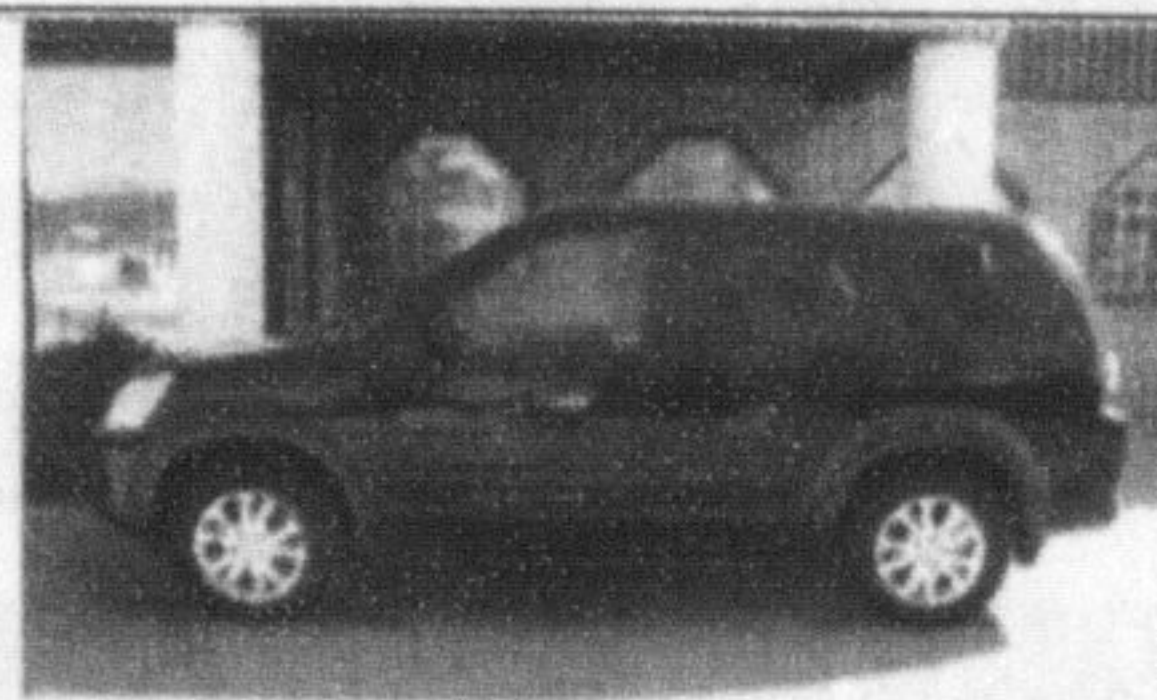
GORRUD'S AUTO

Some dealers like to talk about anything other than warranties.

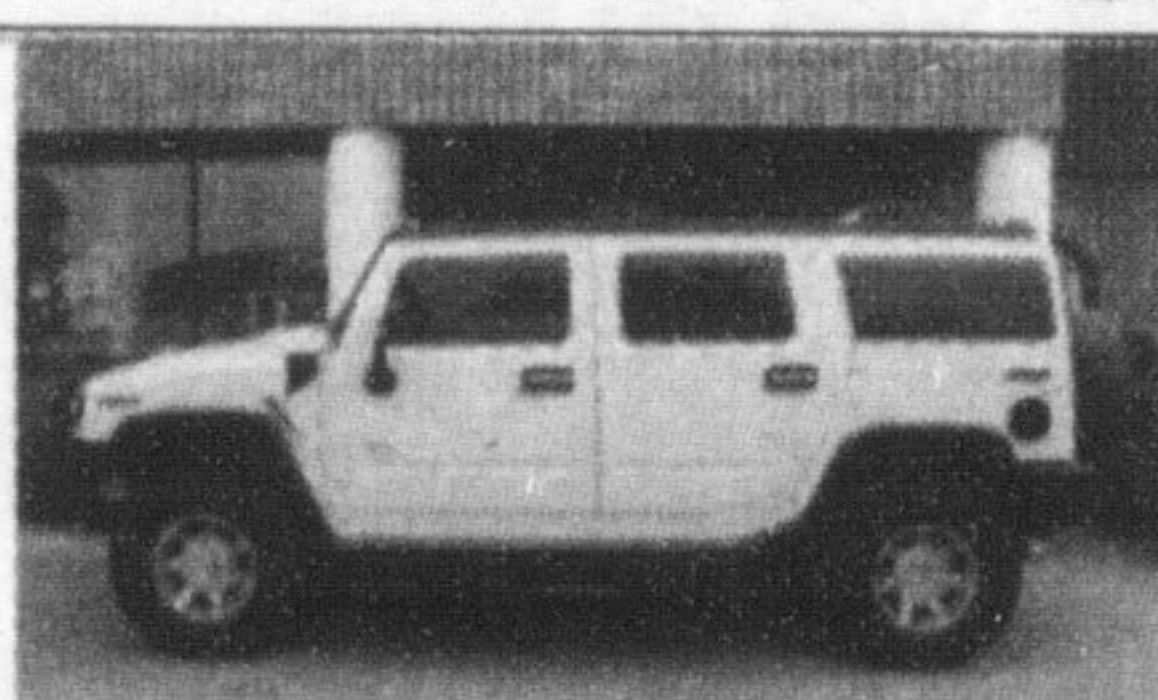
Gorrud's would rather talk about our warranties than anything else.

www.gorrudsautogroup.com

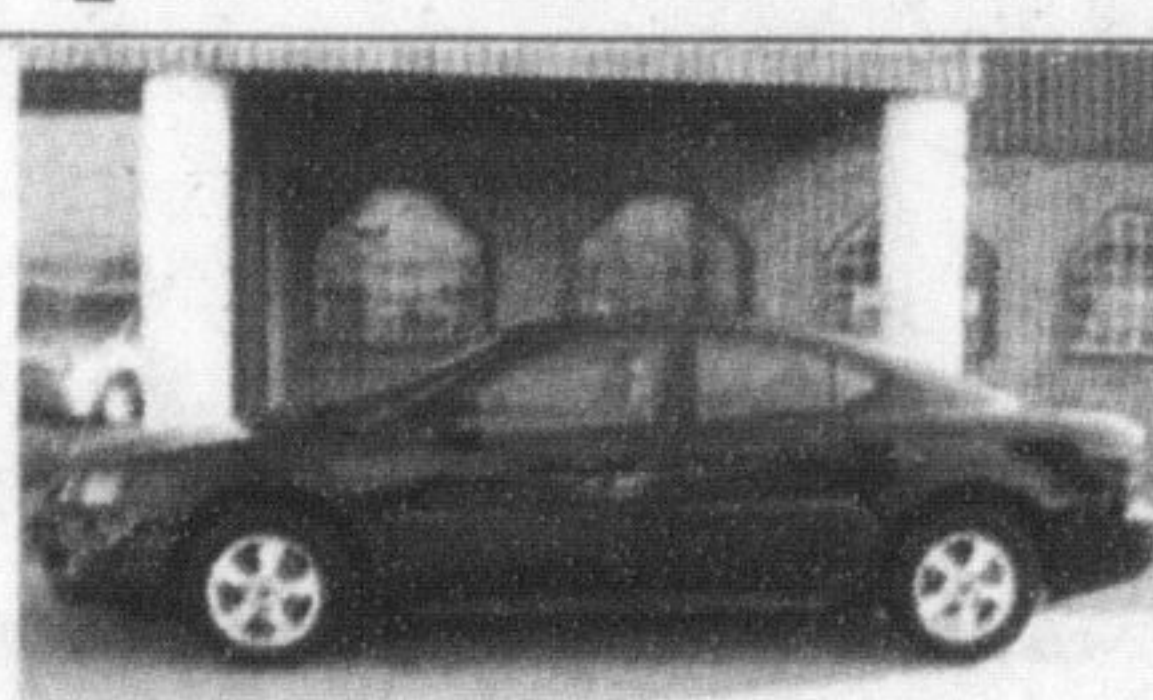
2006 HONDA CRV EX-L
\$32,995



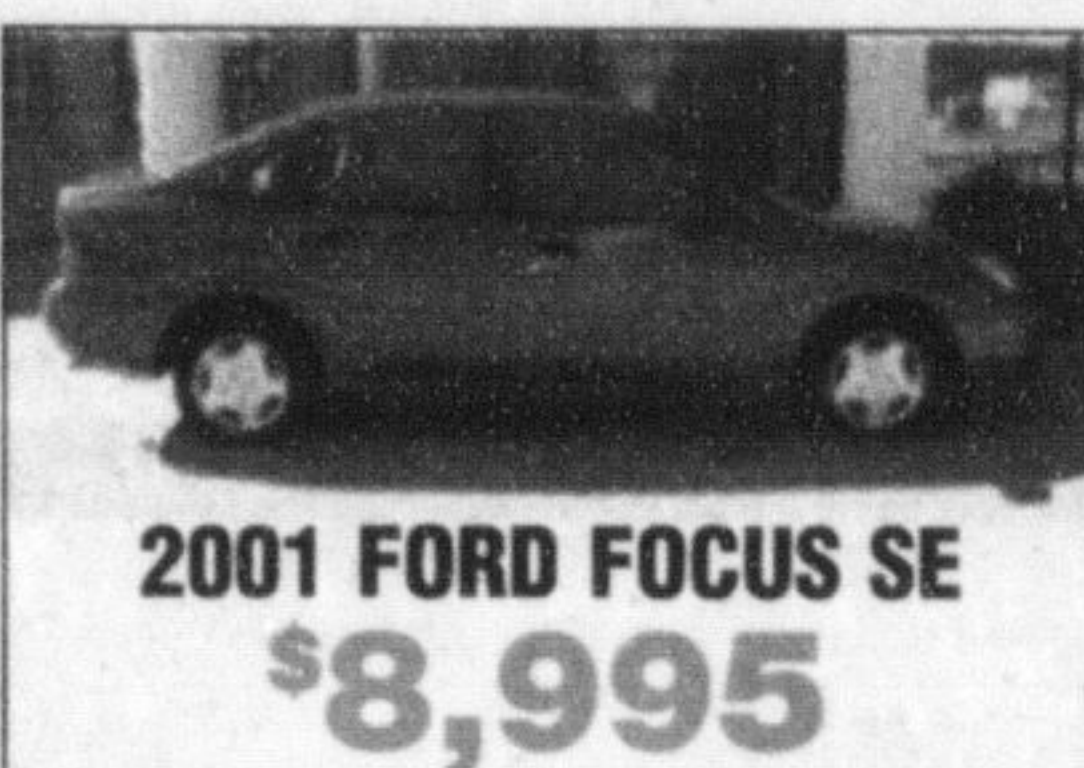
2003 HUMMER H2
\$42,995



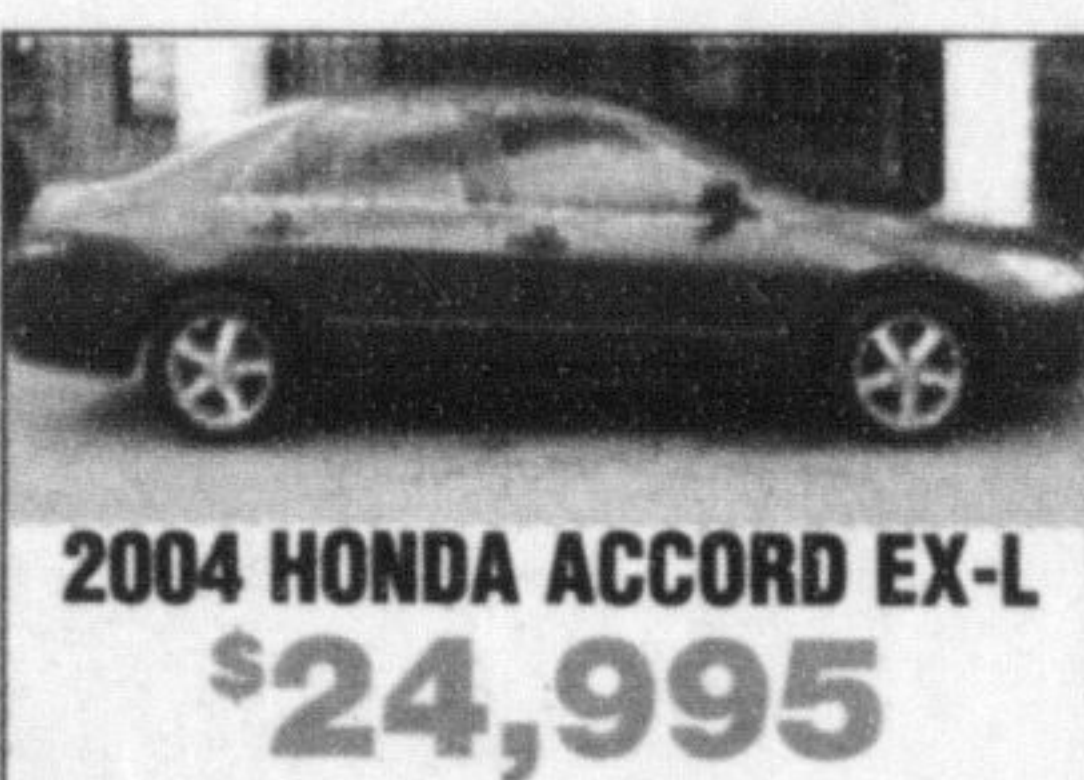
2005 PONTIAC Grand Prix
\$13,990



2001 FORD FOCUS SE
\$8,995



2004 HONDA ACCORD EX-L
\$24,995



2002 NISSAN ALTIMA 2.5 S
\$13,995



2002 BUICK RENDEZVOUS
\$11,995



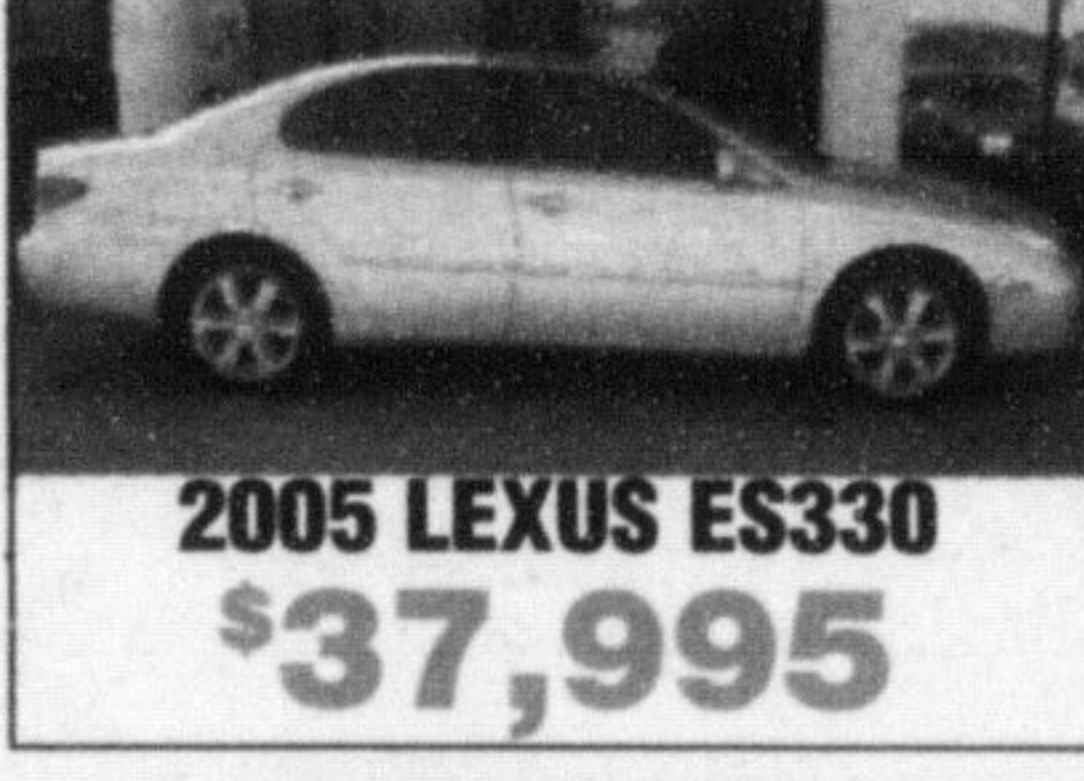
2002 MAZDA PROTEGE 5 ES
\$11,995



2005 TOYOTA CIENNA CE TV W/CR
\$25,990



2005 LEXUS ES330
\$37,995



2005 HYUNDAI SANTA FE GLS AWD
\$21,995



2002 PONTIAC MONTANA
\$11,990



2006

DODGE	Charger SXT	\$20,992
GMC	Yukon 4x4	\$29,995
HUMMER	H3 Luxury Pkg. 4x4	\$42,550
HYUNDAI	Sonata GL	\$18,999
LEXUS	ES330 Special Edition	\$42,990
NISSAN	Maxima 3.5 SE 5 Seat Auto	\$27,995
NISSAN	X-Trail LE AWD 4AT	\$29,998
PONTIAC	Pursuit Base	\$14,990
TOYOTA	Corolla CE 'C' Pkg.	\$17,790
TOYOTA	Corolla CE 'C' Pkg.	\$17,790
TOYOTA	Matrix 'B' Pkg.	\$19,890
TOYOTA	Sienna CE 8-Passenger	\$28,990

2005

CHEVROLET	Equinox LS	\$19,388
CHEVROLET	Malibu LS V6	\$15,995
DODGE	Caravan	\$15,990
FORD	Escape XLT V6 AWD	\$17,995
HYUNDAI	Santa Fe GLS V6 2.7 AWD	\$21,995
LEXUS	ES330 Special Edition	\$37,995
PONTIAC	Grand Prix	\$13,990
PONTIAC	Montana SV6 S V6	\$17,495
TOYOTA	4Runner Limited V6	\$39,995
TOYOTA	Echo	\$13,956
TOYOTA	Tundra Double Cab 4x4 TRD Pkg.	\$33,950

2004

BUICK	Rendezvous CX	\$19,995
CHEVROLET	Astro Base	\$12,395
CHEVROLET	Avalanche 1500 4x4 Z71	\$23,990
FORD	Expedition Eddie Bauer 4x4	\$27,888
FORD	F-150 Lariat Crew Cab 4x4 FX4	\$29,995
FORD	Focus ZX5 Premium	\$13,990
FORD	Ranger X-Cab Stepside	\$18,290
GMC	Yukon Denali AWD	\$33,990
HONDA	Accord EX-L 5AT	\$24,995
LEXUS	RX330 4x4	\$39,850
LINCOLN	Navigator Ultimate 4x4	\$35,995
MAZDA	Mazda3 GT	\$17,995
NISSAN	Maxima 3.5 SE	\$21,950
TOYOTA	4Runner SR5 V6 Sport	\$29,990
TOYOTA	Camry LE 4AT	\$17,995
TOYOTA	Matrix 4AT	\$16,995
TOYOTA	Sienna LE	\$26,995

2003

CADILLAC	CTS Deluxe 4AT	\$23,850
CADILLAC	Escalade 4x4	\$33,990
CHEVROLET	Impala LS	\$14,990
DODGE	Durango SLT Plus 4x4	\$18,995
FORD	Expedition SLT	\$19,999

FORD	Explorer XLT 4x4 4.0	\$18,890
FORD	F-150 King Ranch 4x4 Supercrew	\$26,990
FORD	Fucus ZTS	\$14,750
FORD	Taurus SEL	\$13,495
FORD	Windstar Sport	\$12,995
GMC	Envoy SLE 4x4	\$17,995
HONDA	Accord EX-L	\$18,995
HONDA	CR-V LX AWD	\$15,950
HONDA	Odyssey EX	\$22,450
INFINITI	G35 Luxury	\$24,695
JEEP	Grand Cherokee Limited 4x4	\$15,995
LEXUS	ES300	\$28,950
MAZDA	Protege5 ES	\$15,695
NISSAN	Maxima SE	\$17,495
NISSAN	Murano SL AWD	\$21,995
PONTIAC	Grand Am SE1	\$9,999
TOYOTA	Camry SE 4AT	\$19,950
TOYOTA	Corolla LE 4 AT	\$12,888
TOYOTA	Matrix XR	\$16,995

2002

BUICK	Century Custom Special Edition	\$7,895
CHEVROLET	Impala LS	\$8,995
DODGE	Caravan SE	\$12,995
DODGE	Dakota Quad Cab Sport	\$13,495
DODGE	Grand Caravan Sport	\$12,995
HONDA	Accord SE 4AT	\$14,395
HONDA	Civic DX 4AT	\$13,695
HYUNDAI	Sonata GL	\$10,995
MAZDA	Protege LX 2.0	\$12,895
MAZDA	Protege SE	\$11,595
MAZDA	Protege5 ES	\$13,995
MAZDA	Protege5 ES	\$14,995
MAZDA	Protege5 ES	\$11,995
MAZDA	Protege5 ES	\$14,999
NISSAN	Altima 2.5 S	\$13,995
NISSAN	Pathfinder LE 4x4	\$22,995
NISSAN	Xterra SE 4x4	\$18,495
SATURN	S-Series SL1	\$10,595
SATURN	S-Series SL1	\$10,995
SATURN	S-Series SL1	\$8,995
SATURN	VUE 2.2L FWD	\$10,995
TOYOTA	Highlander Limited AWD	\$20,995
TOYOTA	Sienna XLE	\$18,950

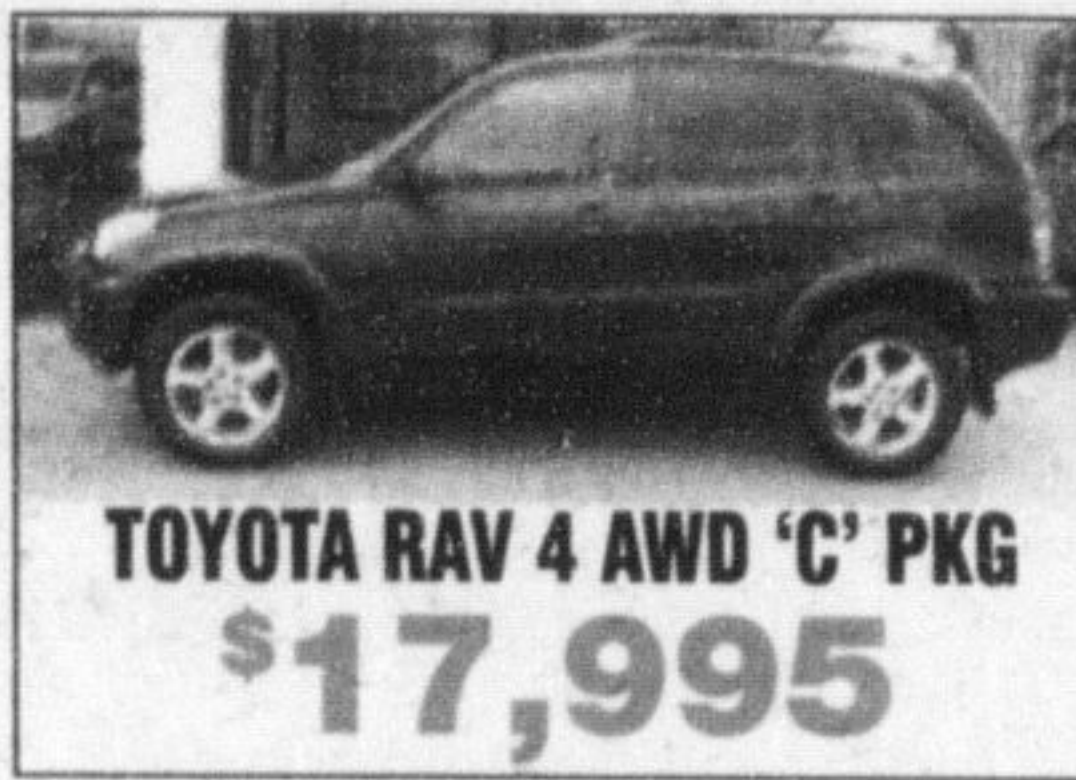
2001

CHRYSLER	Town & Country Limited AWD	\$17,995
TOYOTA	Corolla CE 'B' Pkg.	\$9,995

2000

HONDA	Accord Special Edition	\$14,995
SUBARU	Outback AWD	\$13,950

TOYOTA RAV 4 AWD 'C' PKG
\$17,995



2003 TOYOTA ECHO
\$9,995



2004 TOYOTA 4RUNNER SR5 V6 Sport
\$29,990



2006 TOYOTA COROLLA CE 'C'
\$16,988



2003 INFINITI G35 PREMIUM
\$24,695



2002 SATURN SL1
\$8,995



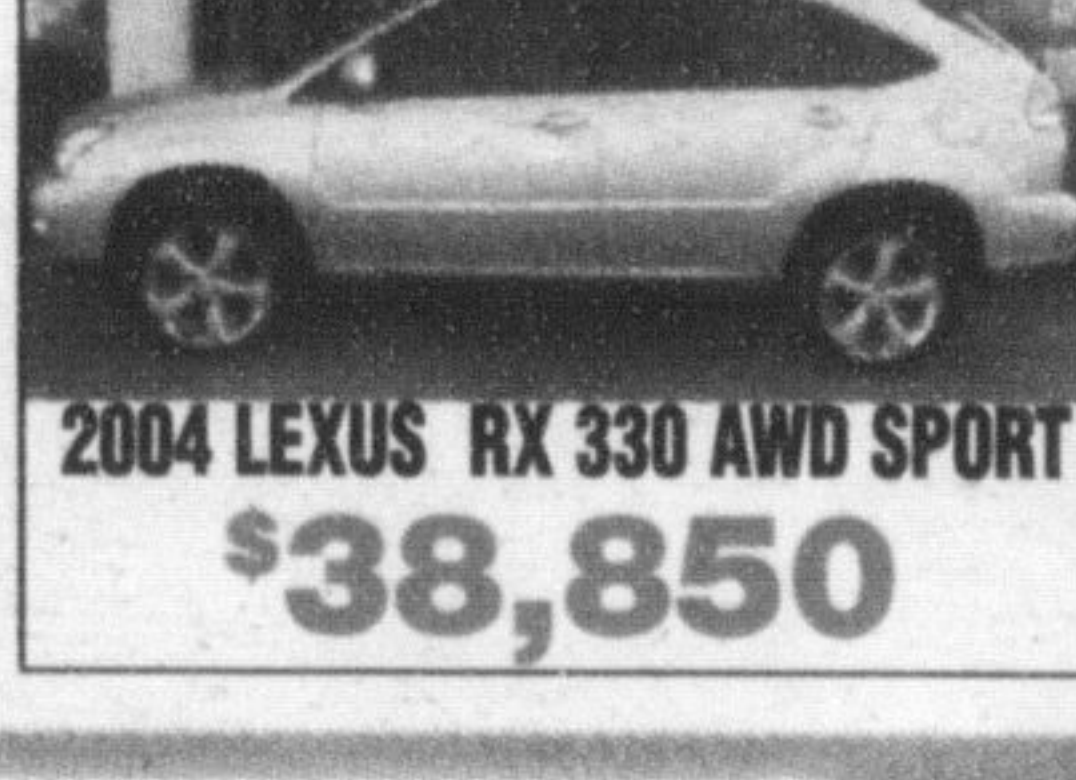
2005 CHEV MALIBU LS V6
\$15,995



2004 FORD F-150 CREW CAB 4X4 FX4
\$23,995



2004 LEXUS RX 330 AWD SPORT
\$38,850



Coming Soon!

- 2006 CADILLAC Escalade ESV
- 2006 BUICK Lucerne CXL
- 2006 BUICK Rendezvous CXL AWD
- 2006 CADILLAC SRX AWD
- 2006 GMC Savana 3/4 Ton EXT Cargo Van
- 2005 CADILLAC Escalade
- 2005 CHEVROLET Equinox LT AWD

All Gorrud's Vehicles Are:
CarProof VERIFIED

This includes: Lien Search, Registration Search, Accidental Claims, Odometer Records for the U.S. and Canada

THE GORRUD'S DIFFERENCE

- SATISFACTION GUARANTEED**
30 DAY / 2500 KM EXCHANGE POLICY
- PRICE GUARANTEED**
7 DAY PRICE PROTECTION
- MECHANICAL GUARANTEED**
30 DAY 100% MECHANICAL WARRANTY
- LONG TERM GUARANTEED**
6 MONTH/10,000KM POWERTRAIN WARRANTY
- PEACE OF MIND GUARANTEED**
WE STATE IT ALL IN WRITING

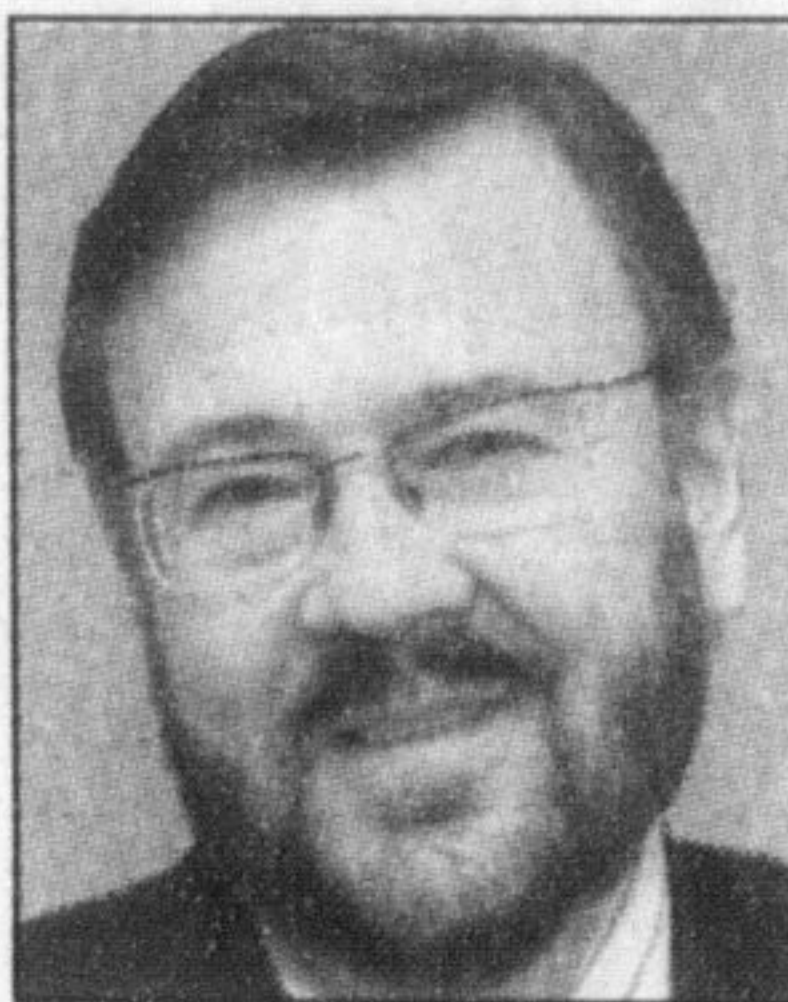
GORRUD'S AUTO

410 STEELES AVENUE, IN MILTON 1-800-731-6580 OPEN SUNDAYS 11:00 AM TO 4:00 PM OVER 250 VEHICLES IN STOCK

Turner says religious right wants him out

By Melanie Hennessey
CANADIAN CHAMPION STAFF

Halton MP Garth Turner claims members of local and national religious groups opposed to same-sex marriage are organizing in an attempt to defeat him in the upcoming Conservative riding nomination contest.



Garth Turner

The feisty politician alleges some of his supporters and a member of the Halton Conservative riding association were contacted by phone about a meeting prior to it being held Tuesday night in Milton to review his candidacy.

According to Turner, the callers — who identified themselves as being with the Conservative Party of Canada — also expressed concern with his position on same-sex marriage.

"I can't say I am surprised by this, since I have been critical for months of those in the righteous right who I believe are intolerant and want to impose their moral code," he said.

"I am quite convinced the majority of people in Halton do not want to debate gay marriage, but that doesn't mean this group — if it is well organized — can't scoop off the Conservative nomination."

Turner alleges that the group is affiliated with local churches and the Defend Marriage Coalition and is looking for a candidate to oppose him who would vote to re-open the same-sex marriage issue.

He also said he believes one person the group is working with as a potential candidate is D'Arcy Keene, whom Turner defeated during the last nomination contest.

Defend Marriage Coalition head Charles McVety, who's also the president of Canada Christian College and the Canada Family Action Coalition, told The Champion yesterday that the group has been encouraging Keene to run against Turner.

He also acknowledged that the coalition has promised to try to overthrow MPs who favour same-sex marriage.

"That is our focus, but in this situation, it's almost impossible," he said, pointing to the short time frame — about one week — that candidates have been given to come forward for the nomination contest.

He called Turner's allegations "a global conspiracy theory" that's been blown out of proportion.

"He appears to have some entitlement focus, and anyone who dares to challenge him is breaching his entitlement," McVety said.

He also said he thinks Turner is distorting the coalition's general campaign to encourage grassroots people to get involved in the candidate selection process.

Meanwhile, Keene told The Champion he will be running in the riding nomination contest. **see NOMINATION on page A5**