

The Canadian Champion

Milton's Community Newspaper Since 1860

TAXI
A-1 ROSE TAXI
905-875-1900
A-1 ROSE TAXI
905-875-1900
1-800-595-0296
Call for Reservations
10% SENIORS DISCOUNT

REAL ESTATE

See what's on the market inside

SPORTS

Marauders power way into NFC final

COMMUNITY

Red Cross in dire need of drivers

1% GOWEST
Realty Ltd. Realtor
(905) 542-3511
office since 1975
Selling your home for MORE and SAVING you thousands of dollars!
Jack Nasarzewski
Broker, (905) 542-2745
Marek Kluga
Sales Rep., (905) 330-1888
www.gowestrealty.com

www.miltoncanadianchampion.com

A Metroland Publication • Vol. 147 No. 45

Tuesday, August 15, 2006

44 Pages • \$1.00 (incl. G.S.T.)



GRAHAM PAINE / CANADIAN CHAMPION

SWING BATTER: Andrea McTavish of the 'A Team' belts out a hit against fellow Milton co-ed team 'Bryden's 1' Saturday afternoon during the 11th annual Leslie Wells Slo-Pitch Tournament. The 'A Team' went on to prevail 15-1, but a number of local charities and causes were the ultimate winners — with the 56-team fundraising tournament bringing in more than \$30,000, exceeding last year's total.

Police beef up their recruiting efforts

Applicants from all walks of life are accepted

By Howard Mozel
SPECIAL TO THE CHAMPION

While Recruitment Officer Const. Julie Craddock is adept at extolling the virtues of the Halton Regional Police Service (HRPS) by explaining the myriad pluses associated with the organization, it's the genuine enthusiasm with which she does so that ultimately sells this career path.

The daughter of a police officer who boasts many other law enforcement professionals in her extended family, Craddock makes no bones about how much she loves what she does and how fulfilling it will also be for the right applicants.

That said, she quickly points out that the HRPS does not subscribe to a "cookie cutter" approach to hiring, but is committed to diversity in the truest sense of the word among candidates.

This means that — given the expansive range of tasks, challenges and opportunities open to officers within the HRPS — an equally wide spectrum of individuals is being actively encouraged to apply. They include, but are not limited to, people of different ages, genders, races and languages and those who bring varied educational backgrounds and life experience to the job — including foreign-trained officers.

For that reason, says Media Relations Officer Sgt. Peter Payne, potential applicants should never rule themselves out of contention and let HRPS determine how their attributes can best be utilized.

"It's all added-value," said Payne.

What might come as a surprise to

people, adds Craddock, is that no prior law enforcement education or related work experience is required to apply. Although this will be taken into account, of course, the selection process places a premium on a demonstrated ability to learn — hence any post-secondary achievement is a definite plus and an indicator that they'll flourish in the on-the-job training environment of policing.

"We need to see they can learn new things and adapt," said Craddock, explaining that new officers are called "Constable Generalists." "The learning never stops."

Adds Payne: "There are so many things we do daily."

This high degree of variety is one major draw for people who simply can't be satisfied by endless daily routine, said Payne, who adds that even after 24

• see RESIDENTS on page A3

Inside Today's Champion

OPINION	A6
BUSINESS	A7
CHAMPION COUNTRY	A11
DATELINE	A17
CLASSIFIED	A19

www.miltoncanadianchampion.com

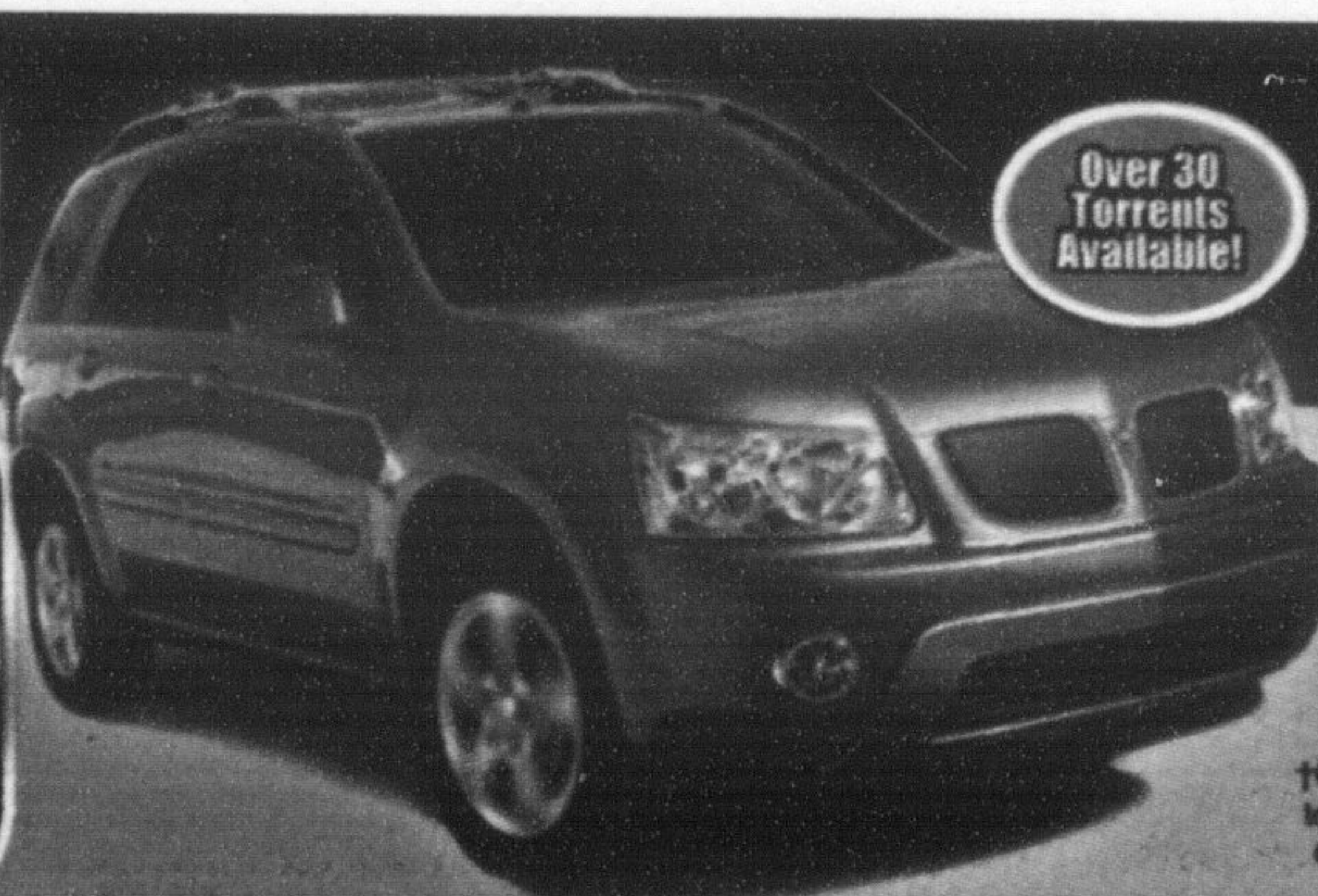
Inserts:
Full Distribution
Town of Milton
Partial Distribution
Sleep Factory • Country Depot • Rona
Sport Check • Sport Mart • Dentistry on Bronte
Business Depot • National Sports
JYSK Bed & Bath • The Shoe Company

MILTON TOYOTA
www.miltontoyota.com

Wallace
PONTIAC • BUICK • CADILLAC

905-878-2355

801 MAIN ST. E. MILTON, ONT.
www.wallacepontiac.com • tollfree: 1-888-878-2354
MON. - THURS. 9:00 AM - 9:00 PM, FRI. & SAT. 9:00 AM - 6:00 PM



Over 30 Torrents Available!

BRAND NEW PONTIAC
06' TORRENT

3.4L 185 hp V6 Engine, A/C, Fog Lamps, 5-Spd. Automatic Trans., 16" Aluminum Wheels, 6-Speaker CD Stereo, Remote Keyless Entry, Removable Panels, Fold Flat Front Passenger Seat & more.

Wallace Price Starting From: **\$25,585***

CANADA-WIDE CLEARANCE EVENT
0%
Financing Available up to 60 months

*Cash price is plus freight, all appl. taxes and license fee. Tax: \$5961 due on delivery. All rebates assigned to dealer. Some restrictions apply. *0% financing is OAC. Fin. Example: \$20,000 at 0% over 60 mo. = \$333.33, C.O.B. = \$0, total cost of borrowing = \$20,000. Vehicles may not be exactly as shown. See dealer for details.