

More water still needed for development

• from APPEAL on page A1
comment, but he said he's not interested in discussing the case with the media and that his lawyer is handling it.
Mattamy's plans include a mix of single

and semi-detached homes and townhouses. While 2,216 homes have been proposed for the property, water and wastewater capacity has only been secured for 566 units at this time through an agreement with the Region.

The ultimate plan for the 340-acre piece of land also includes designated areas for residential office and commercial development.
Melanie Hennessey can be reached at mhennessey@miltoncanadianchampion.com.

Christian school set to open in Sept.

By Melanie Hennessey
CANADIAN CHAMPION STAFF

After several years of planning, the Milton Christian School is ready to open its doors.

The multi-denominational facility will welcome students in September to its initial site at Southside Community Church on Derry Road.

The new facility is headed up by the Milton Christian Education Association (MCEA) and will start off with classes for junior kindergarten to grade 4 students, and possibly a grade 5 class depending on the interest expressed by local residents. Classes will be added over the next four years to bring the curriculum up to grade 8.

"We are extremely excited to be moving forward with the primary objective of our association — to establish and operate an independent, multi-denominational Christian elementary school in Milton," said board chair Jim Hughes.

"The opportunity to lease space from Southside Community Church is a great blessing to us and we appreciate their heart for the Milton community and Christian education. It is truly reflective of the support that is being expressed to us through the various Christian churches in Milton."

School principal Jennifer Feenstra-DeVries said enrollment just recently began, and while she's not sure exactly how many children they'll be expecting next month, she said there's been a lot of interest in the community.

In addition to using the gymnasium at the church for students' physical activities, Feenstra-DeVries pointed out that the school is conveniently located near other athletic facilities, like the Milton Sports Centre.

"We're excited that we're so close to great sports locations," she said.

So, who will this new school appeal to?

"Families who want their children to have an education with strong values," Feenstra-DeVries said, noting the school will also offer strong academics. "It gives parents in Milton another option."

For more information visit www.miltonchristianschool.com.

Melanie Hennessey can be reached at mhennessey@miltoncanadianchampion.com.

THE FORD STORE

YOU GET THE BEST PRICES OF THE YEAR. PERIOD.

WELCOME TO OUR FAMILY.

FAMILY PRICING
Welcome

2006 FORD Mustang V6 Coupe

4.0L V6, 5 spd auto, A/C, pw, pdl, spd control & tilt, p. driver seat, spoiler, interior upgrade pkg, handling pkg, spinner wheel caps, tungsten grey exterior. MSRP \$28,240. Stk. #M6000.



FORD FAMILY PRICE **\$25,890**

2006 FORD Freestyle SEL

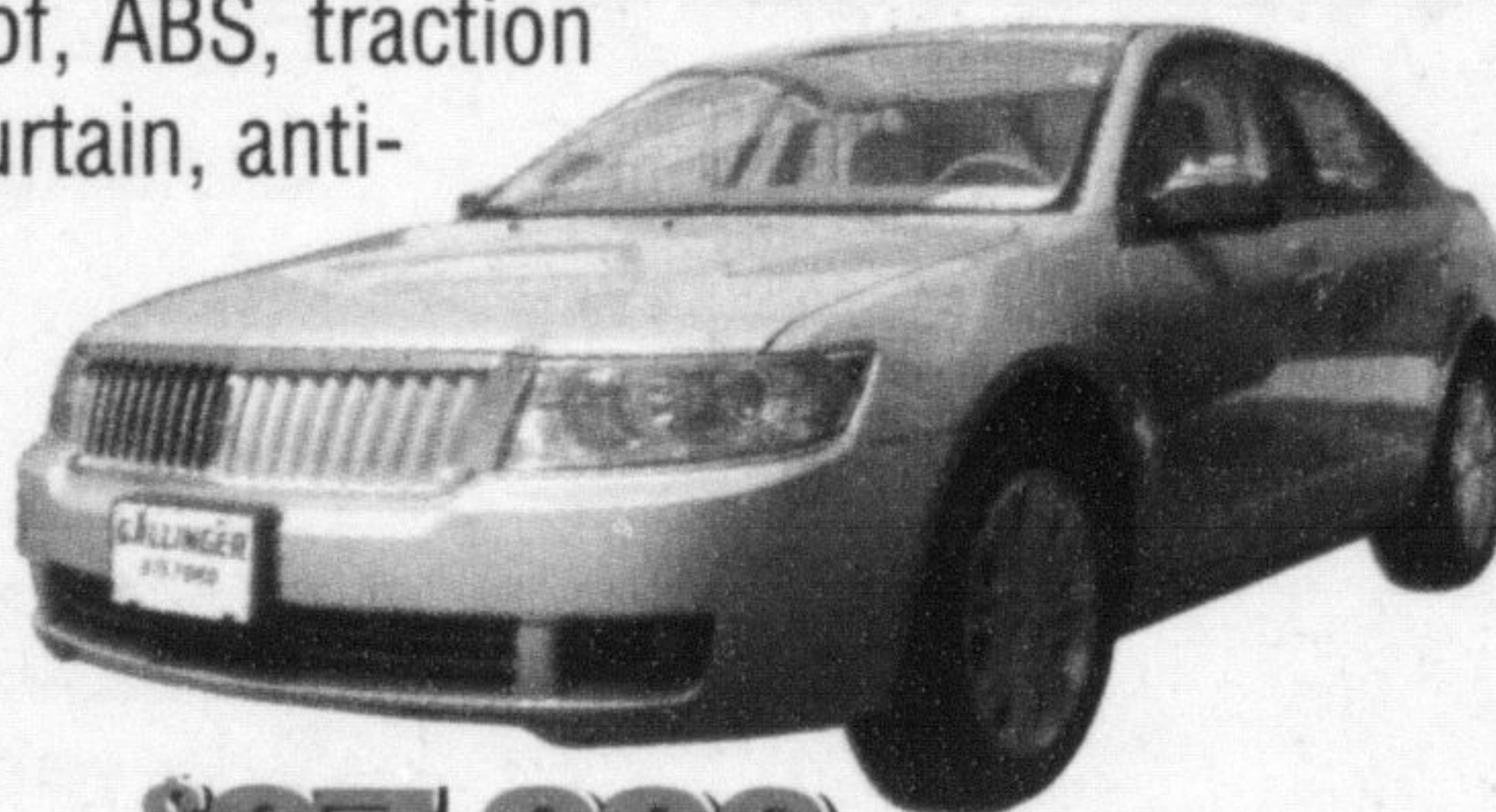
3.0L V6, CVT transmission, dual auto A/C, pw, pdl, spd control & tilt, ABS, traction control, p. seats, p. pedals, pueblo gold exterior. MSRP \$38,034. Stk. #H6015.



FORD FAMILY PRICE **\$32,804**

2006 LINCOLN Zephyr

3.0L V6, 6 spd auto, A/C, pw, pdl, spd control & tilt, p. seats, p. moon roof, ABS, traction control, side air curtain, anti-theft alarm, alum wheels, dune pearl exterior. MSRP \$39,844. Stk. #Z6003



FORD FAMILY PRICE **\$37,229**

2006 FORD F150 Supercrew 4x4 Lariat

5.4L V8, auto O/D, A/C, pw, pdl, spd control & tilt, leather seats, privacy glass, rear defroster, fog lamps, keyless entry, chrome step bar, chrome wheels, reverse sensors, 7200 GVWR pkg, dark stone exterior. MSRP \$48,770. Stk. #F6011



FORD FAMILY PRICE **\$40,809** (plus box liner)

All prices include Freight & Air Tax! See Gallinger for Details



BUILT FOR LIFE IN ONTARIO.

*Price plus applicable taxes and license fee. MSRP for reference only. See dealer for details.

GALLINGER

FORD LINCOLN

655 MAIN STREET EAST. MILTON

www.gallingerford.com

Value & Trust since 1967

SALES • LEASING • SERVICE • PARTS • COLLISION CENTRE

Direct Parts Line
905-875-0111

(905) **875-FORD**
3 6 7 3

HINT #45
A one-of-a-kind hat

Read Reuse Recycle

Once you have finished reading the newspaper, don't throw it away. Find another use for it. Newspaper makes awesome party hats, sure to garner attention. As soon as the boss' party is over, take the used newspaper to a recycling center near you.

The Champion
905-878-2341
875 Main Street, Milton
Classified@miltoncanadianchampion.com