

# The Canadian Champion

Milton's Community Newspaper Since 1860

Weekend Edition

MILTON PUBLIC LIBRARY

**APPLE AutoGlass**  
Auto Accessories  
Upholstery Repairs  
Windshield Repairs  
781 MAIN ST. #1 & 2,  
MILTON 876-4785

NEWS  
**Watch out for 'phishing'**

SPORTS  
**Senior Sox ready for 'A' eliminations**

A & E  
**Kids invited to 'Camp CNE'**

**KAREN'S FLOWER SHOP**  
Visit us at  
www.karensflowershop.com  
487 Laurier Ave.  
878-2881

www.miltoncanadianchampion.com

A Metroland Publication • Vol. 147 No. 42

Friday, August 4, 2006

44 Pages • \$1.00 (incl. G.S.T.)



GRAHAM PAINE / CANADIAN CHAMPION

**BEATING THE HEAT:** This week's sweltering heat sent many to the beach at Kelso Conservation Area. Here, two-year-old Camryn Kossel gets a little relief — cooling even her tongue — while paddling near the shore.

## West Nile in Halton

Dead bird in Burlington tests positive for WNV

By Jason Misner  
SPECIAL TO THE CHAMPION

West Nile has officially surfaced this year in Halton.

The Canadian Cooperative Wildlife Health Centre in Guelph has confirmed a dead crow picked up by the Halton Region Health Department in Burlington on July 25 has tested positive for the mosquito-borne virus.

The crow, found in the area of Tremaine Road and No. 1 Sideroad in Burlington, is the first West Nile-positive crow found in Halton this year.

Last year's first confirmed case of West Nile in Halton was in Burlington on July 15, also in a dead crow.

So far this season, residents have  
• see RESIDENTS on page A14

## Waste-to-energy initiative going ahead

Plan could extend Halton landfill's life by 20 years

By Melanie Hennessey  
CANADIAN CHAMPION STAFF

The Region is moving forward with plans to set up a facility that would convert waste into energy, helping lengthen the life of Halton's landfill by up to two decades and generate enough power for about 18,000 households.

The announcement was made at a press conference Wednesday, with Regional Chairman Joyce Savoline sharing details on the initiative that could cost anywhere

between \$300 and \$800 million to establish at the Halton Waste Management Site on Regional Road 25 in Milton.

"Halton Region is in front of the waste issue and exploring the opportunity to implement a safe, clean, green, state-of-the-art facility using world-class technology," she said.

"By implementing a made-in-Halton energy from waste (EFW) solution, Halton is in a unique and favourable position to become



Joyce Savoline

self-sufficient in managing our waste and control our own destiny."

An EFW facility is described by the Region as an electrical power generation plant that converts the heat energy in solid waste material into renewable energy using advanced thermal technologies.

While an image of an old style incineration plant may come to mind for some people, Savoline assured those at the conference that's not the case. "We're not going to be buying a 1960 Chevy here," she said, adding that the Region will provide the "best possible product" for its residents.

Commissioner of Planning and Public Works Peter Crockett explained the thermal  
• see PLAN on page A13

## Inside Today's Champion

OPINION	A6
DATELINE	A9
CLASSIFIED	A22
REAL ESTATE	B5

www.miltoncanadianchampion.com

- Inserts:**  
**FULL DISTRIBUTION**  
• FOOD BASICS • COVERS • DELL COMPUTERS  
• SOBEYS • THE BRICK
- PARTIAL DISTRIBUTION**  
• SEARS • CANADIAN TIRE • PIZZA HUT • HOME HARDWARE  
• ASHLEY FURNITURE • PRICE CHOPPER • RABBA FINE FOODS  
• SEARS • BEST BUY • A&P • FUTURE SHOP • HOME DEPOT  
• SHOPPERS DRUG MART • MICHAELS  
• THE SOURCE BY CIRCUIT CITY • SUPER PET

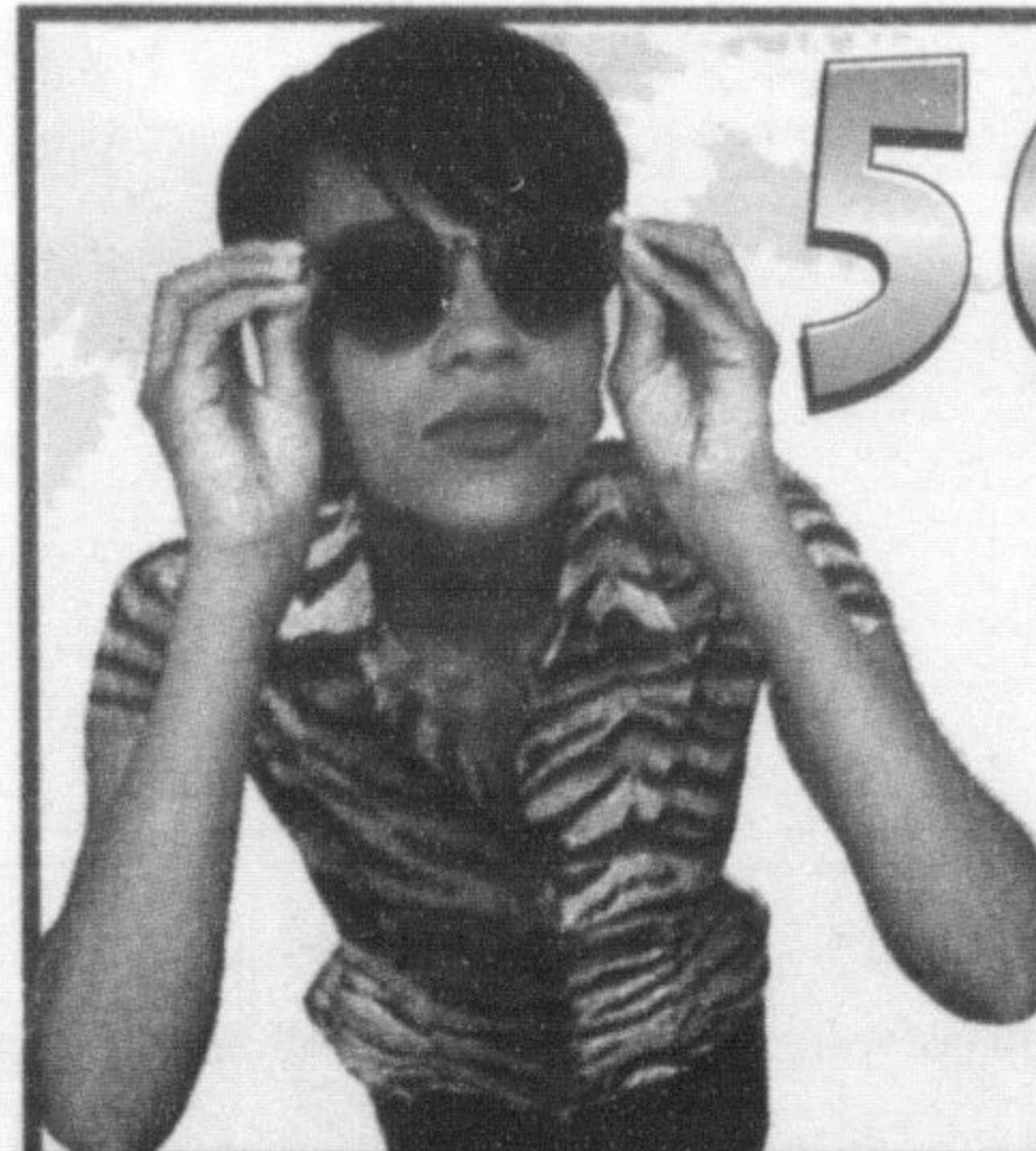
**MILTON TOYOTA**  
www.milontoyota.com



Relax and enjoy,  
but please don't drink and drive  
this long weekend.

**MILTOWNE**

751 Main St. E. Milton • (905) 878-6919  
(Across from GO Station)



**50-70% OFF**  
**SUMMER BLOWOUT**  
HOTTEST PRICES IN TOWN

**JO'LEEN'S**

Clothing • Accessories • Gifts  
GLITZ • CASUAL • CLASSIC

MILTON MALL  
CORNER OF  
MAIN & ONTARIO  
878-9446