



TAKE UP A SUMMER SPORT.

Time to get actively involved in a new Mazda. Visit your dealer today and experience the soul of a sports car in every vehicle we build.



zoom-ZOOM

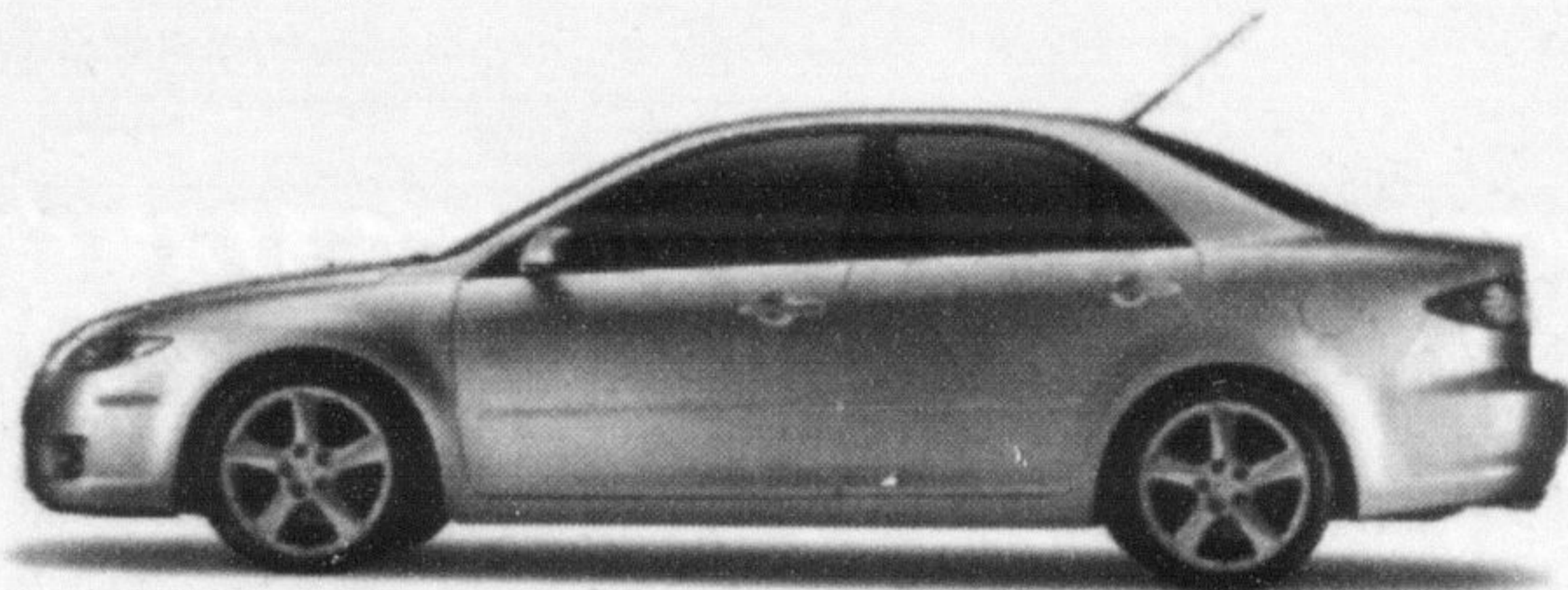
A turbocharged, direct-injected 274-horsepower engine and AWD drivetrain make MAZDASPEED6 simply the most powerful, best handling sedan we've ever built. Add to that a moonroof, Leather package and intelligent keyless entry for an unrivalled driving experience.

0%

PURCHASE FINANCING FOR 36 MONTHS AVAILABLE ON ALL NEW 2006 MAZDA6 MODELS†

2006 MAZDASPEED6

LEASE FROM
\$379* - AT - **1.9%** LEASE APR
PER MONTH/48 MONTHS
WITH \$5,295 DOWN PAYMENT
NO SECURITY DEPOSIT
LEASE PAYMENT INCLUDES FREIGHT AND P.D.E.



GS-V6 with Sport package model shown

2006 MAZDA6 SEDAN GS-I4
5-SPEED AUTOMATIC TRANSMISSION

A true sports performer with ABS, traction control, 17" alloy wheels, 8-way power driver's seat, fog lights and a leather-wrapped steering wheel. Not to mention over 100 international awards.

LEASE FROM
\$279* - AT - **1.9%** LEASE APR
PER MONTH/48 MONTHS
WITH \$2,695 DOWN PAYMENT
NO SECURITY DEPOSIT
LEASE PAYMENT INCLUDES FREIGHT AND P.D.E.

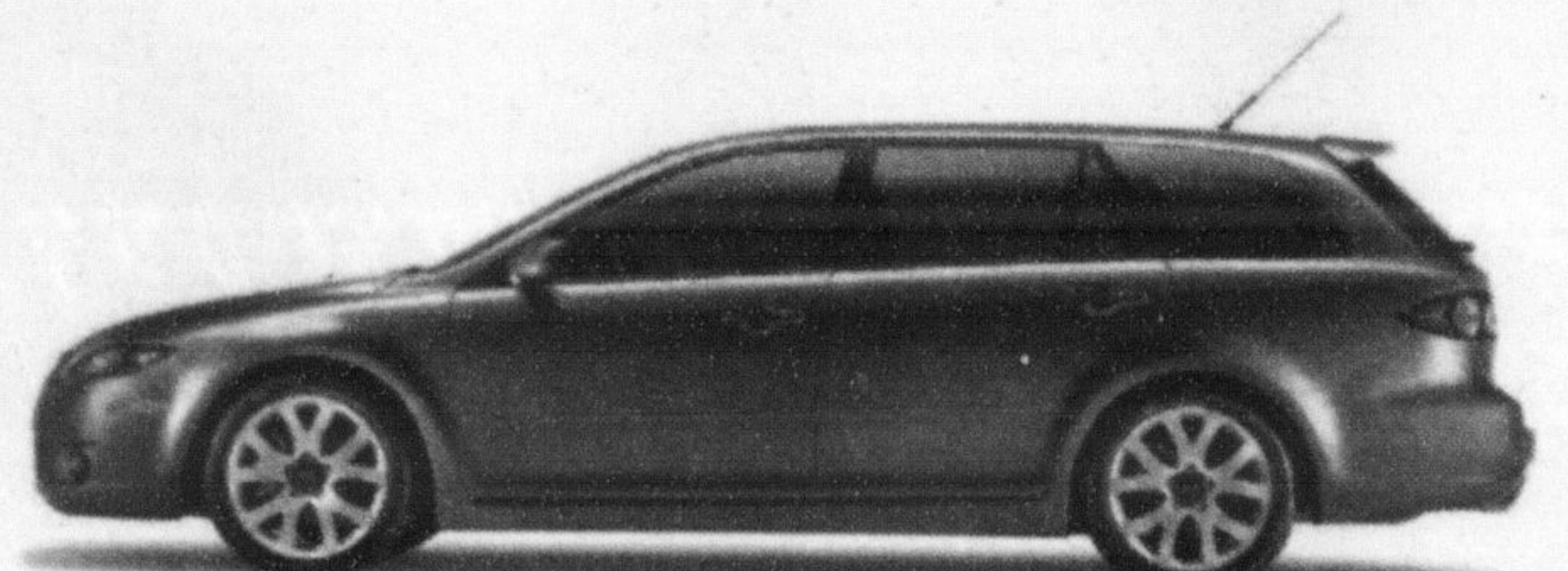


GT-V6 model shown

2006 MAZDA6 SPORT HATCHBACK GS-I4
5-SPEED AUTOMATIC TRANSMISSION

Award-winning style plus a convenient liftgate, ABS, traction control, 17" alloy wheels, 8-way power driver's seat, fog lights and GFX package.

LEASE FROM
\$299* - AT - **1.9%** LEASE APR
PER MONTH/48 MONTHS
WITH \$2,695 DOWN PAYMENT
NO SECURITY DEPOSIT
LEASE PAYMENT INCLUDES FREIGHT AND P.D.E.



GT-V6 with Performance package model shown

2006 MAZDA6 SPORT WAGON GS-V6
6-SPEED AUTOMATIC TRANSMISSION

Get all the power, performance and handling of the Mazda6 family, plus space and cargo capability that rivals some SUVs.

LEASE FROM
\$299* - AT - **1.9%** LEASE APR
PER MONTH/48 MONTHS
WITH \$2,895 DOWN PAYMENT
NO SECURITY DEPOSIT
LEASE PAYMENT INCLUDES FREIGHT AND P.D.E.



mazda

EXPERIENCE EMOTION IN MOTION AT YOUR LOCAL MAZDA DEALER.

To locate a dealer near you, visit www.mazda.ca or call 1-800-263-4680.

READY TO ROLL 52-POINT PRE-DELIVERY INSPECTION • ROADSIDE ASSISTANCE PROGRAM • MAZDA LEADERSHIP WARRANTY • ASK ABOUT OUR OUTSTANDING COMPREHENSIVE AND POWERTRAIN WARRANTY COVERAGE
ASK ABOUT OUR LOYALTY OFFERS FOR EXISTING MAZDA CUSTOMERS. GRADUATES GET AN ADDITIONAL CASH AWARD OF UP TO \$1,000 TOWARDS A PURCHASE OR LEASE.

† 0% APR Purchase Financing 36 months is available on all new 2006 Mazda6 - Based on a representative agreement using an MSRP of \$38,795 for the 2006 MAZDASPEED6 with a financed amount of \$35,000, the C.O.B. for a 36-month term is \$0, using an MSRP of \$26,495 for the 2006 Mazda6 sedan GS-I4 with a financed amount of \$20,000 the C.O.B. for a 36-month term is \$0, using an MSRP of \$27,595 for the 2006 Mazda6 Sport hatchback with a financed amount of \$25,000 the C.O.B. for a 36-month term is \$0, using an MSRP of \$29,095 for the 2006 Mazda6 Sport Wagon with a financed amount of \$25,000 the C.O.B. for a 36-month term is \$0. Down payment may be required. \$1,275 freight and P.D.E. for all Mazda6 models, \$65 PPSA, licence, insurance, taxes and other dealer charges are extra. *Offers available on retail leases of new 2006 MAZDASPEED6 with Leather package and moonroof, 2006 Mazda6 sedan GS-I4 automatic transmission, 2006 Mazda6 Sport hatchback GS-I4 automatic transmission with GFX and Sports packages and 2006 Mazda6 Sport Wagon GS-V6 automatic transmission with Sports package. Total lease obligation for the 2006 Mazda6 sedan GS-I4 automatic transmission (G4SD86AB00) is \$16,087 including down payment of \$2,695. Total lease obligation for the 2006 Mazda6 Sport hatchback GS-I4 automatic transmission (G5SD86AB00) is \$17,047 including down payment of \$2,695. Total lease obligation for the 2006 Mazda6 Sport Wagon GS-V6 automatic transmission (G6S286AB00) is \$17,247 including down payment of \$2,895. Total lease obligation for the 2006 MAZDASPEED6 (G4MS568L00) is \$23,487 including down payment of \$5,295. For other models see your dealer for details. Lease payment includes freight and P.D.E. of \$1,275 for all Mazda6 models. PPSA registration fee of \$51.31 for a 48-month term extra. Don't even think about a security deposit. It'd just mean more paperwork for us. And besides: we like you. 20,000 km per year mileage allowance applies; if exceeded, additional 12¢ per km applies. 25,000 km leases also available. Licence, insurance, taxes and other dealer charges extra. Dealer may sell/lease for less. Limited quantities available. Dealer order or trade may be necessary on certain vehicles. Offers available from July 5, 2006 for a limited time only. Lease and Finance on approved credit for qualified customers only. See your dealer for details.

