

Canadian Red Cross
 Injuries kill more children under 19 than all other causes of death combined.
 Take a Red Cross first aid course.

Dateline

• from DATELINE on page A11
 Artists meets from 7 to 10 p.m. The informal environment gives artists an

opportunity to exercise their drawing skills. Call Janis at (905) 854-5753.
 The Milton Seniors' Activity Centre,

500 Childs Dr., holds its Thursday Afternoon Movie featuring Annapolis, bid euchre and contract bridge at 1:30

p.m. The cost for each activity is \$2 for members and \$4 for non-members. For more information, call (905) 875-1681.

Friday July 21

The Deck youth centre, 200 Main St. (rear entrance), invites high school students looking to play a game of pool or just hang out to drop by between 7 and 11 p.m.

Milton District Hospital holds a group session breastfeeding clinic with a certified lactation consultant from 11 a.m. to 12:30 p.m. For information or to make an appointment, call Jean Gallen at (905) 878-2383, ext. 7030.

The Milton Seniors' Activity Centre, 500 Childs Dr., holds contract bridge at 10 a.m. The cost is \$2 for members and \$4 for non-members. Its summer barbecue starts at 11:30 a.m. The cost is \$6. Euchre starts at 1:30 p.m. at a cost of \$2.50 for members and \$4.50 for non-members. Its Friday Night Movie starts at 7 p.m. featuring Ladies in Lavender at a cost of \$2.50. And Evening Euchre is held at the Campbellville Lions Hall at 7:30 p.m. For information, call (905) 875-1681.

Saturday July 22

Euchre takes place at the Hornby Co-operative Nursery School at 7:30 p.m. Everyone's welcome.

The Milton Moms team — which participates in the Weekend to end Breast Cancer in September — is selling raffle tickets at the Milton Farmers' Market on Main Street.

Saturday July 22 - 23

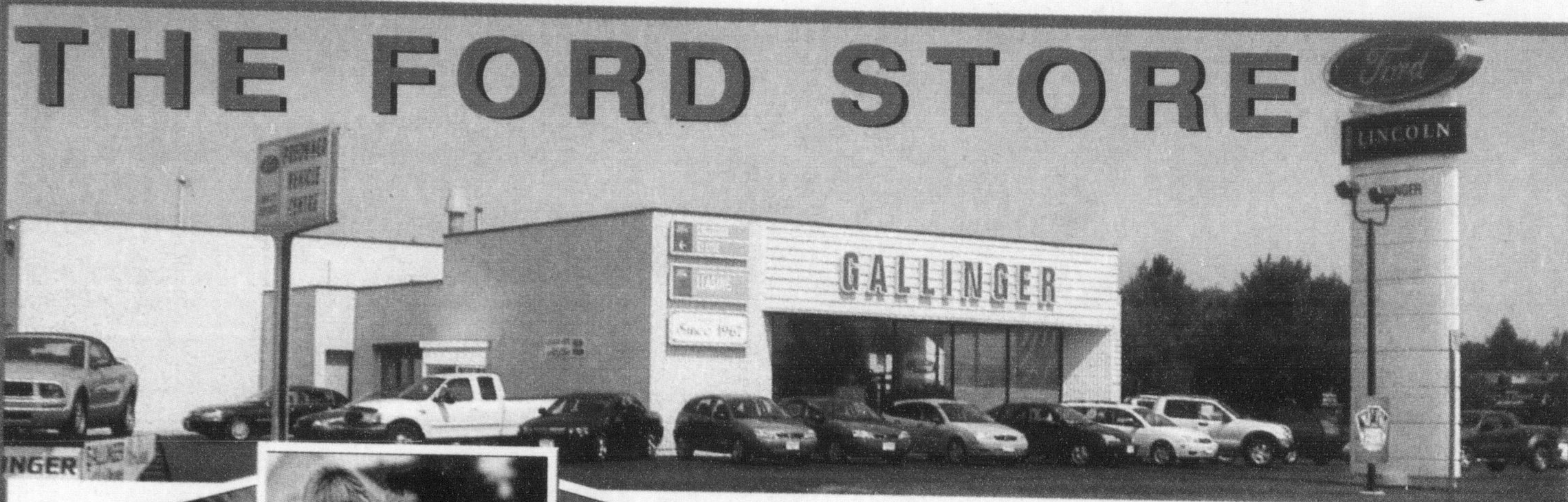
The Canadian Red Cross holds a first aid and CPR course. For more information, call (905) 875-1459.

Country Heritage Park, 8560 Tremaine Rd., holds Kids Country from noon to 5 p.m. featuring an animal trail, pedal tricycles, pedal harness horses, wagon rides, farm animals, a play barn and the regular park exhibits. Sunday only, there's pedal harness horse races from noon to 5 p.m. for kids aged five to 10 years. Drivers are wanted. For information, call (905) 878-8151 or visit www.countryheritagepark.com.

Sunday July 23

Milton Area Christian Churches Working Together hosts Music in the Park at Victoria Park in front of Town Hall from 6:30 to 8:30 p.m. featuring inspirational music from local Christian groups. Admission is free, but an offering will be taken. For more information, call (905) 854-0827.

The Oakville branch of St. John Ambulance holds an emergency first aid course with infant and child CPR. It also holds a babysitting course for youths aged 11 to 14. For more information, call (905) 469-9325.



FAMILY PRICING
 Welcome

YOU GET THE BEST PRICES OF THE YEAR. PERIOD.

WELCOME TO OUR FAMILY.

2006 FORD Focus SES 4dr

2.0L 4 cyl, auto, A/C, p/w, pdl, spd. ctrl & tilt, heated seats, heated mirrors, fog lamps, alum. wheels, spoiler, dark toreador red ext. St#A6054, MRSP \$24,069



FORD FAMILY PRICE **\$19,008**

2006 FORD Taurus SE 4dr

3.0 L V6, auto, A/C, p/w, pdl, spd control & tilt, am/fm/cd, windvail blue ext., St#T6009, MRSP \$26,299



FORD FAMILY PRICE **\$20,963**

2006 FORD Ranger XL 4x2 Supercab

3.0L V6, auto, A/C, AM/FM/CD, privacy glass, 5040 GVWR, rear step bumper, sonic blue ext. St#R6000, MRSP \$21,994



FORD FAMILY PRICE **\$18,343**
 (plus box liner)

2006 FORD F150 4x4 Supercab Harley Davidson

5.4L, auto, A/C, p/w, pdl, spd. control & tilt, rear defroster, auto temp. control, fog lamps, adjustable pedals, running boards, 22" alum wheels, sport tuned shocks, reverse sensing, leather trim, blk. ext. St#F6046, MRSP \$51,639



FORD FAMILY PRICE **\$43,292**
 (plus box liner)

All prices include Freight & Air Tax! See Gallinger for Details



BUILT FOR LIFE IN ONTARIO.

*Price plus applicable taxes and license fee.

GALLINGER

FORD LINCOLN

655 MAIN STREET EAST. MILTON

www.gallingerford.com

Value & Trust since 1967

SALES • LEASING • SERVICE • PARTS • COLLISION CENTRE

Direct Parts Line
 905-875-0111

(905) 875-FORD
 3 6 7 3



HINT #45 A one-of-a-kind hat

Read Reuse Recycle

Once you have finished reading the newspaper, don't throw it away. Find another use for it. Newspaper makes awesome party hats, sure to garner attention. As soon as the boss' party is over, take the used newspaper to a recycling center near you.

The Canadian Champion
 905-878-2341
 875 Main Street, Milton
 Classified@miltoncanadianchampion.com