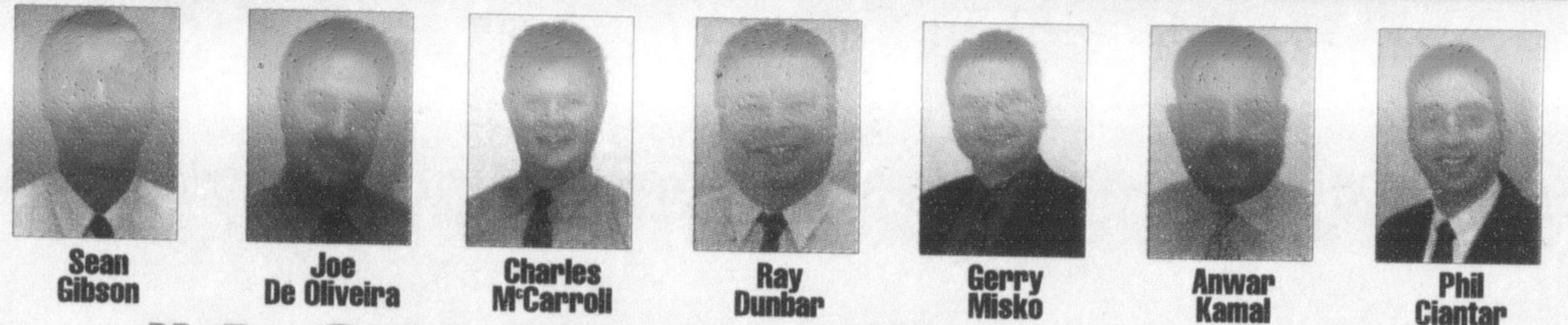


Visit us on the web at [www.miltonchrysler.com](http://www.miltonchrysler.com)



81 ONTARIO ST. N., MILTON

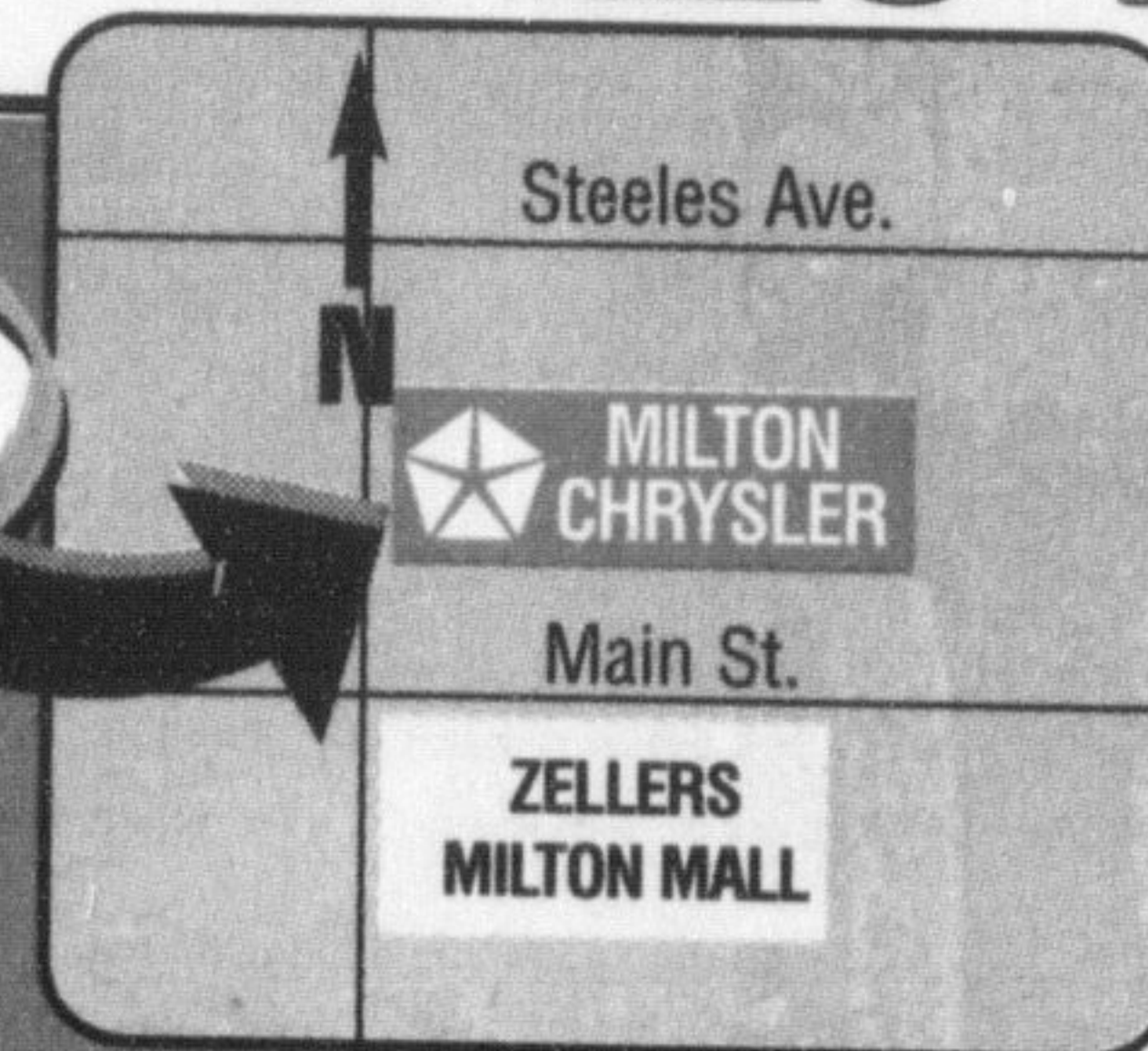


#1 SALES TEAM IN CANADA#

TOLL FREE, CANADA WIDE, SALES HOTLINE...

1-888-247-7001

WE ARE HERE!



LET'S ASK DR. PHIL...

# HOTTEST DEALS UNDER THE SUN

OUR GREAT SUMMER DEALS ARE BACK!

GET AN EMPLOYEE PRICE DISCOUNT\*

+ UP TO \$6,000 IN DELIVERY ALLOWANCE\*

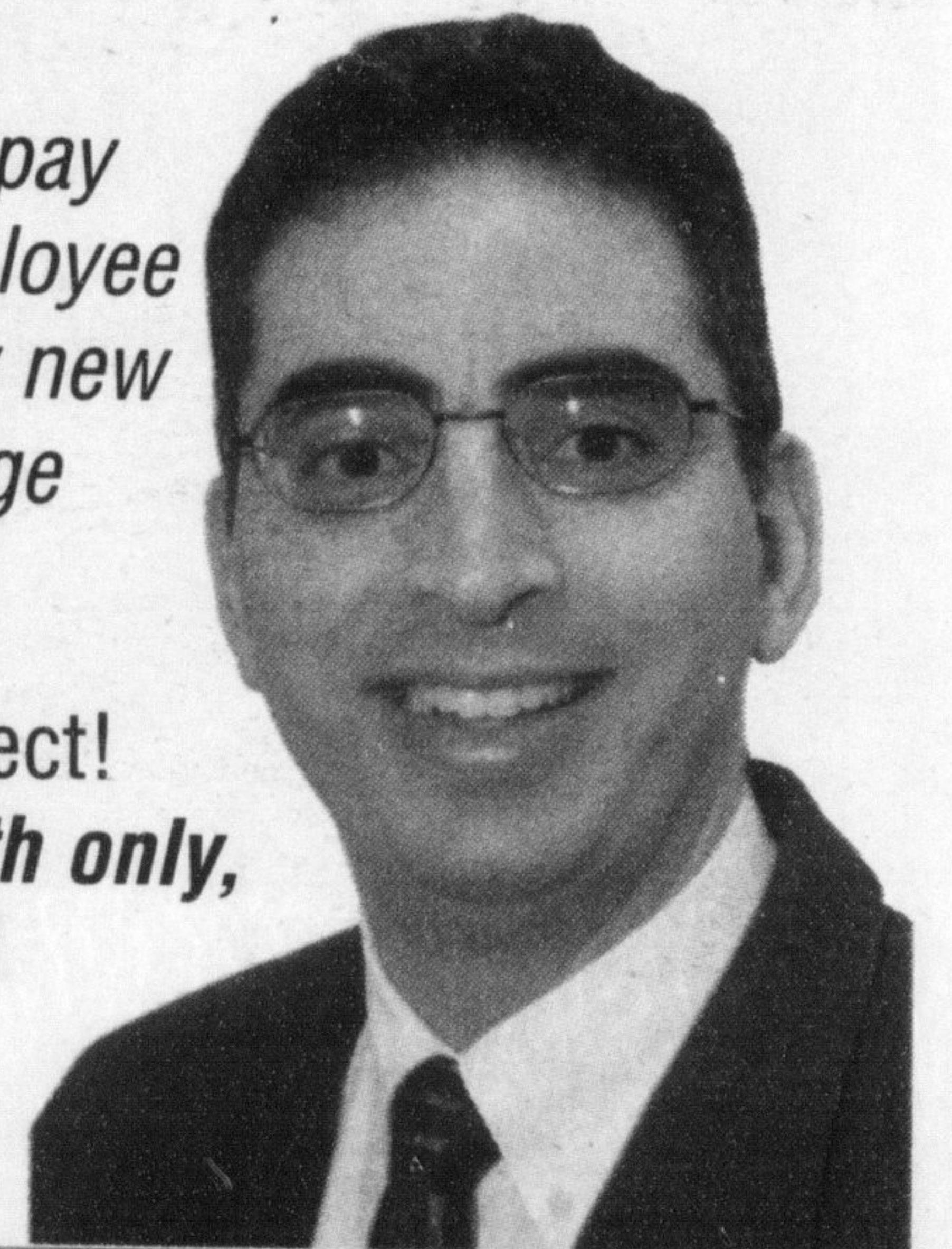
+ 0% PURCHASE FINANCING UP TO 36 MONTHS\*

= THE BEST PRICES OF THE YEAR!

ON ALL 2006 MODELS.

Q: Dear Dr. Phil, Is it true that anybody can pay Chrysler Employee Prices on any new Chrysler Dodge & Jeep?

A: That's correct! For this month only, you pay what employees pay!!!!



Hurry in... offer expires Monday July 31, 2006.

2006 DODGE Ram 1500 4x4 Quad Cab "ST Hemi, Power Pack"

Loaded with options. Stk#222756.



MSRP: \$38,820\*  
-TOTAL DISCOUNT: -\$6,943  
YOUR BEST PRICE: \$31,877\*

ZERO DOWN LEASE \$368<sup>†</sup> PER MONTH FOR 36 MONTHS

2006 DODGE Grand Caravan "Stow-N-Go"

Limited quantities. Stk#505443.



Exclusive Milton Chrysler Price \$22,999\*

ZERO DOWN LEASE \$345<sup>†</sup> PER MONTH FOR 36 MONTHS

2006 CHRYSLER 300 27H Package

Plus alloy wheels. Stk#452048.



MSRP: \$31,150\*  
-TOTAL DISCOUNT: -\$4,162  
YOUR BEST PRICE: \$26,988\*

ZERO DOWN LEASE \$399<sup>†</sup> PER MONTH FOR 36 MONTHS

2006 JEEP Liberty Sport 29B Package

Plus alloy wheels, sunscreen glass & cruise control. Stk#276289.



MSRP: \$32,165\*  
-TOTAL DISCOUNT: -\$4,832  
YOUR BEST PRICE: \$27,333\*

ZERO DOWN LEASE \$335<sup>†</sup> PER MONTH FOR 36 MONTHS

\*Cash sale price includes DA(dealer allowance), add for applicable freight, admin. fee, taxes and licence fee (demos no charge freight, a/c tax and fuel tax). Special finance and lease rates vary by model. See dealer for details. OAC †lease payment terms as shown. Due at signing applicable down payment, first payment, applicable freight, admin fee, taxes and licence fee. 20,400 km annual mileage allowance. Excess kilometre charge 15¢ per km. Closed end, walk away lease, OAC. All offers expire July 31, 2006. \*\*Vehicles not exactly as shown. #Based on April 2006 SSI Results Regional Group. ‡See dealer for details.