

The Canadian Champion

Milton's Community Newspaper Since 1860

This & That

Look For Our Ad on Page 4

781 Main Street East, Unit 17
(In The Apple Auto Glass Complex)
Milton 905-876-1487

REAL ESTATE

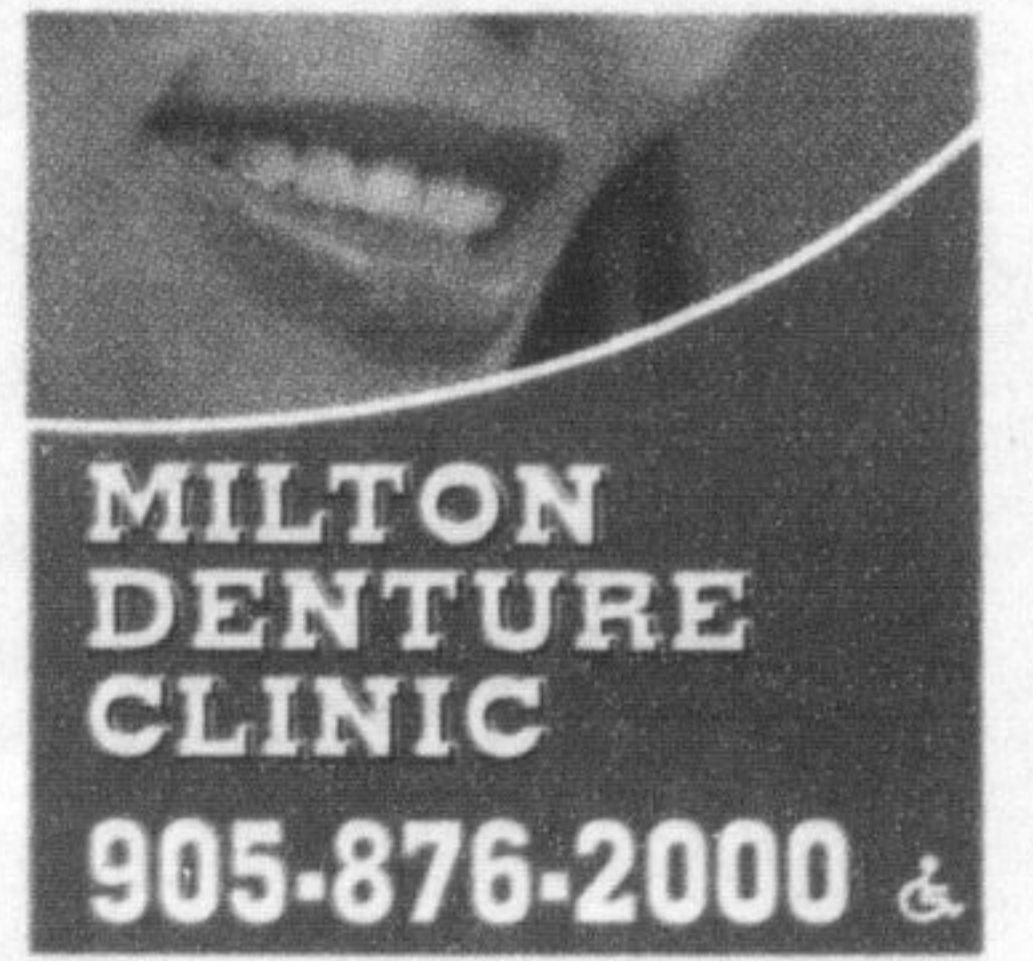
See what's on the market inside

SPORTS

Memorable night for pitcher Hill

COMMUNITY

Woman climbing for her dream



MILTON DENTURE CLINIC

905-876-2000 &

www.miltoncanadianchampion.com

A Metroland Publication • Vol. 147 No. 33

Tuesday, July 4, 2006

40 Pages • \$1.00 (incl. G.S.T.)



GRAHAM PAINE / CANADIAN CHAMPION

MONSTER MACHINE: One-year-old Jacob Auger crawls out from inside the loading bucket of a monster-sized front-end loader during Dufferin Aggregates' recent annual open house at the Milton Quarry. The loader is 20 feet wide and can hold 20 tons of material.

Commercial/retail study approved

A study that'll make way for more local shopping venues received a stamp of approval from town council last week.

The document — called the retail commercial demand study — provides a market demand update for the town, looking at things like new population projections and updated inventories of commercial and retail space.

While waiting for the study's completion over the past year, the Town put on hold all planning applications relating to increasing shopping opportunities in Milton.

The report puts forward several recommendations, such as to allow a commercial area in the No. 3 Sideroad/realigned Tremaine Road area, support the expansion of the Milton Crossroads shopping centre and protect

• see TOWN on page A10

Inside Today's Champion

OPINION	A6
CHAMPION COUNTRY	A11
BUSINESS	A13
DATELINE	A14
CLASSIFIED	A19

www.miltoncanadianchampion.com

Inserts:

FULL DISTRIBUTION
STONE CREEK FURNITURE • CINEPLEX

PARTIAL DISTRIBUTION
SLEEP FACTORY • PIZZA HUT • COUNTRY DEPOT
• BOUCLAIR • GIANT TIGER • MSP • CALIFORNIA SPA
• BENTLY • ETHAN ALLEN

MILTON TOYOTA

www.miltontoyota.com

Parking woes to be looked at in Official Plan

By Melanie Hennessey
CANADIAN CHAMPION STAFF

A review of the Town's Official Plan that will look at everything from how to solve parking woes in new subdivisions to what the maximum height of apartments should be is now underway.

The process was kicked off Thursday night with an open house at the Milton Leisure Centre where dozens of residents dropped by to learn more about what the review will entail.

"This is a project that has come out of our

strategic plan," said Director of Planning and Development Mel Iovio, referring to the Destiny Milton 2 strategic plan document town council approved last week. "A lot of work has started already."

Nick McDonald of Meridian Planning Consultants Inc. — which is helping the Town through the Official Plan process — outlined the issues that will be dealt with through the review process.

They include:

- Urban design, or how to improve the appearance of future development
- Parkland standards

- Transportation and transit
- Whether Milton's housing mix should include more medium and high-density development

• Infrastructure delivery

A few residents questioned whether the need for a hospital expansion would be looked at when updating the Official Plan.

McDonald explained that the issue was looked at when Destiny Milton 2 was created, but the Town actually has no direct control over hospital funding or its long-term plans.

He added the Town is committed to making sure whatever can be done for the hospital is

• see PEOPLE on page A10

CIL Exterior Paint & Stain only
~~40%~~

50% off

*WHILE QUANTITIES LAST

Mon, Tues, Wed & Fri 8:30-6:00pm
Thurs. 8:30-8:00pm • Sat. 8:00-4:00pm

tielemans interiors

340 Main Street Milton 878-3435
www.floorfirst.com/tielemansinteriors



INVENTORY SALE
All Gold Jewellery

30% Off

*In-Stock Items Only

HALTON HILLS Fine Jewellery

218 Main St., Milton
905-875-2999

Hours: Mon-Wed: 9:30am-6:00pm • Thurs-Fri: 9:30am-8:00pm • Sat: 8:30am-4:00pm

