

Dateline

Dateline is a free listing of coming events only. The column is available to local community groups to assist in promoting their future events. Only charitable or non-profit community groups may use this service. We can only guarantee one issue of publicity closest to the date of the occurrence although more insertions are possible if demand is low.

Notices for Dateline should be handed in at the office of The Champion, 875 Main St. E., faxed to (905) 878-4943 or e-mailed to miltonead@haltonsearch.com. The final deadline is noon Friday for Tuesday's edition and noon Wednesday for Friday's edition. Dateline items aren't accepted by telephone.

Saturday July 1

The Milton Mayor's Youth Advisory Council presents its Teen Zone at the Canada Day festivities at the Milton Fair Grounds from noon to 5 p.m. with challenges and activities. For more information, call (905) 878-7252, ext. 2755 or visit www.milton.ca.

Monday July 3

The Deck youth centre, 200 Main St. (rear entrance), invites students in grades 6 to 8 looking to play a game of pool or just hang out to drop by between 1 and 5 p.m.

Monday July 3 - 14

Khi Community holds its Khi Adventure Day Camp for kids aged five to 13 with crafts, games and a daily field trip. The cost is \$70 per week or \$16 per day. For more information, call (905) 875-1022 or visit www.khicommunity.com.

Tuesday July 4

The Centre for Skills Development and Training offers conversational Spanish courses in Milton for those who want to brush up on their skills or learn Spanish from scratch. For more

information, call (905) 333-3499, ext. 115. The centre also offers free Language Instruction for Newcomers to Canada (LINC) and English as a Second Language (ESL) classes until August 17. Morning, afternoon and evening sessions are available. For more information or to register, call (905) 845-1157, ext. 102 or visit www.thecentre.on.ca.

Milton District Hospital holds a one-on-one breastfeeding clinic with a certified lactation consultant from 9:30 to 11:30 a.m. For more information or to make an appointment, call Jean Gallen

at (905) 878-2383, ext. 7030.

Calling New Parents, a free program for parents and babies aged 6 months and younger, meets with a public health nurse to discuss parenting and infant care. The group meets at the Ontario Early Years Centre, 917 Nipissing Rd., from 1:30 to 3:30 p.m. For more information, call (905) 825-6000, ext. 7299.

Help for Parents, a Halton parent support group, meets in the evening in the basement of the church at 5720 New St. in Burlington. This non-

• see more **DATeline** on page B14

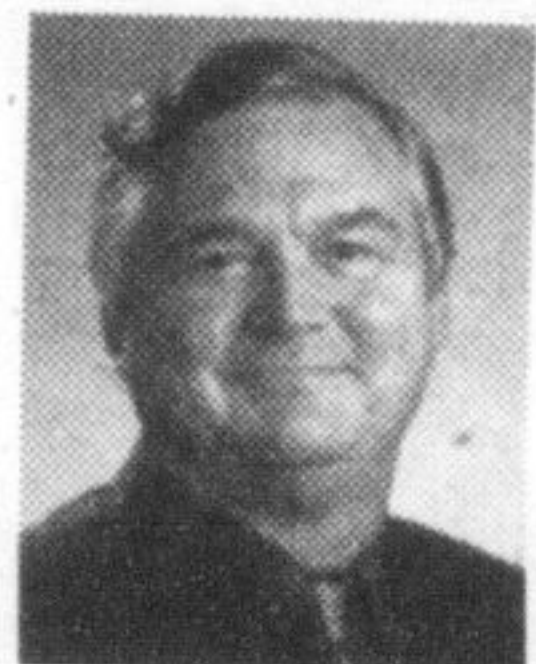
Are you connected to your community?

Get all the news from Milton, Oakville, Burlington and surrounding areas quickly and conveniently online and on your schedule.

24/7 miltoncanadianchampion.com

Find Our What Your Home is Worth On-Line

Visit: www.haltonhomeevaluation.com
Prudential Town Centre Realty Brokerage



THE CONSERVATION ZONE
EVERY KILOWATT COUNTS - EVEN AT THE COTTAGE!
Peter Love
Chief Energy Conservation
Officer of Ontario

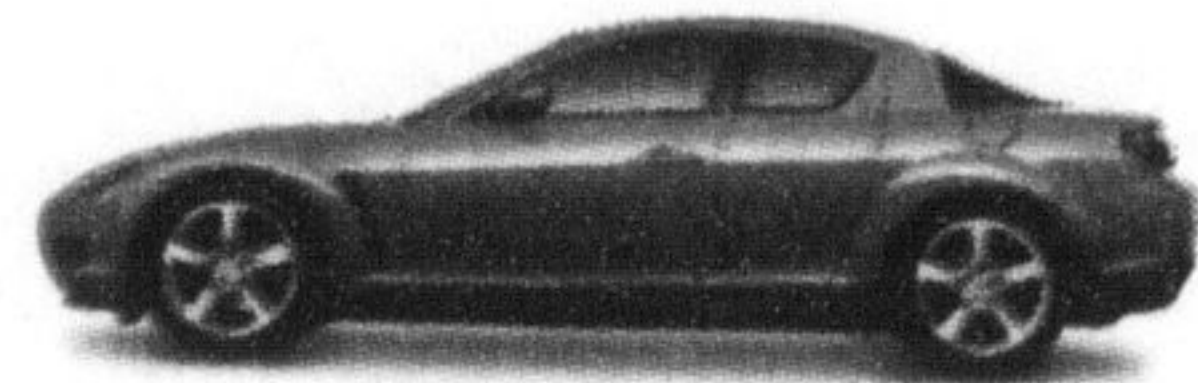
My role as Chief Energy Conservation Officer is to ensure that conservation and energy efficiency play a vital role in Ontario's ongoing energy strategy.

"The Conservation Zone" is designed to help you find ways to use energy more wisely, and become part of Ontario's growing conservation culture. We can no longer take electricity for granted. And with hot summer days already here, every saved kilowatt counts as our power generators produce the extra electricity we need to keep Ontario cool. When you take off for cottage country this summer, don't leave energy conservation behind! Many of the energy-saving ideas that have worked around your home will work just as well at the cottage.

Cottage Tips for Using Energy Wisely

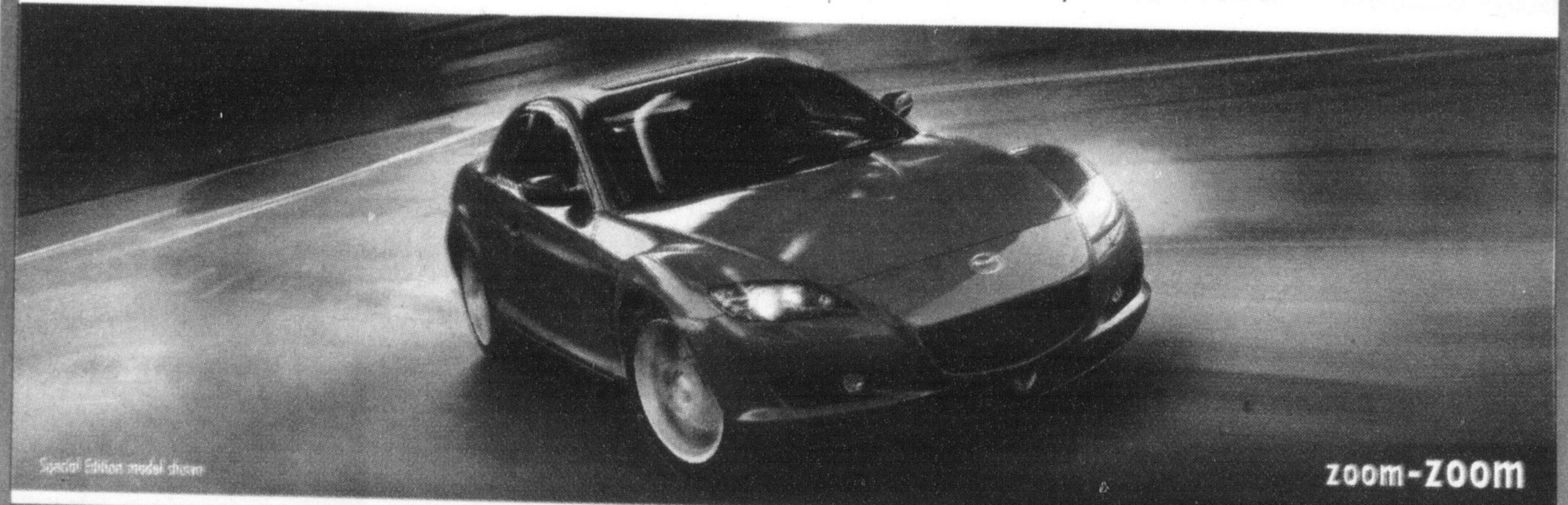
- Keeping screens clean and in good repair will allow you to open windows wide to catch those cooling cross-breezes.
- Ceiling fans are also an energy-efficient way to be comfortable on hot days.
- If your cottage has a clothes dryer, save it for colder days and use an outdoor line to get that "fresh air" feel in your clothing.
- Use compact fluorescent lighting (CFL) instead of incandescent lights.
- Purchase "ENERGY STAR" rated equipment and appliances.
- Use solar panels for hot water or electricity, if possible.
- While barbecuing is generally the cooking method of choice at the cottage, the less you use your oven, the more energy you'll save. Use a microwave oven whenever possible.
- Older fridge models can be real kilowatt guzzlers. A new fridge can run on as little as half the electricity of a ten year old unit. But new or old, when it's not in use, unplug it!
- On a rainy day, spend some time caulking and weather-stripping your cottage. It will help to keep cool air in...and insects out.

You can start saving energy at home while you are away with a programmable thermostat that sets back your air conditioning when you leave for the cottage and bumps in back up when you're on the way home. Take advantage of the Conservation Bureau's Cool Savings Rebate program that offers up to a \$75 rebate on a contractor-installed programmable thermostat. For more information on this and other rebate programs, call 1-866-670-COOL (2665), or visit www.conservationbureau.on.ca



TAKE UP A SUMMER SPORT.

Time to get actively involved in a new Mazda. Visit your dealer today and experience the soul of a sports car in every vehicle we build.



NO NEED TO WAIT **1%** GST REBATE APPLIED NOW**

0% PURCHASE FINANCING AVAILABLE ON ALL NEW 2006 MAZDAS†

2006 MAZDA RX-8 GS
LEASE FROM **\$369*** -AT- **0%** LEASE APR
PER MONTH/24 MONTHS WITH \$5,495 DOWN PAYMENT
NO SECURITY DEPOSIT
LEASE PAYMENT INCLUDES FREIGHT AND P.D.E.



2006 MAZDA3 SEDAN GX

Did someone say "zoom-zoom"? This AJAC award winner has it going on - with a fuel efficient, 2.0L DOHC engine, air conditioning, power locks, remote keyless entry and more.

LEASE FROM **\$179*** -AT- **0%** LEASE APR
PER MONTH/24 MONTHS WITH \$2,495 DOWN PAYMENT
NO SECURITY DEPOSIT
LEASE PAYMENT INCLUDES FREIGHT AND P.D.E.



2006 MAZDA3 SPORT GS

The award winning Mazda3 Sport 5-door has it all: a 160-hp 2.3L DOHC engine, 16" alloy wheels, fog lights...even steering wheel-mounted audio controls.

LEASE FROM **\$199*** -AT- **0%** LEASE APR
PER MONTH/24 MONTHS WITH \$2,495 DOWN PAYMENT
NO SECURITY DEPOSIT
LEASE PAYMENT INCLUDES FREIGHT AND P.D.E.



2006 MAZDA5 GS

Practical, yet sized for manoeuvrability. Affordable, yet loaded with what you want. The Mazda5 is a cleverly designed Multi-Activity Vehicle that combines versatile 6-passenger seating with your daily dose of zoom-zoom.

LEASE FROM **\$279*** -AT- **5.9%** LEASE APR
PER MONTH/48 MONTHS WITH \$2,295 DOWN PAYMENT
NO SECURITY DEPOSIT
LEASE PAYMENT INCLUDES FREIGHT AND P.D.E.



ACHILLES
MAZDA

357 Queen St. East,
ACTON, On
519-853-0200
1-866-620-3248
info@achillesmazda.ca

"OUR DEALERSHIP IS NOT THE BIGGEST... OUR GOAL IS TO BE THE BEST!"

READY TO ROLL 52 POINT PRE-DELIVERY INSPECTION • ROADSIDE ASSISTANCE PROGRAM • MAZDA LEADERSHIP WARRANTY • ASK ABOUT OUR OUTSTANDING COMPREHENSIVE AND POWERTRAIN WARRANTY COVERAGE
ASK ABOUT OUR LOYALTY OFFERS FOR EXISTING MAZDA CUSTOMERS. GRADUATES GET AN ADDITIONAL CASH AWARD OF UP TO \$1,000 TOWARDS A PURCHASE OR LEASE.
† 0% APR Purchase Financing 24 months is available on all new 2006 Mazda RX-8, 2006 Mazda3, and 2006 Mazda5. Based on a representative agreement using MSRP of \$37,995 for the 2006 RX-8 GS with a financed amount of \$35,000, the C.O.B. for a 24 month term is 5.0%, using an MSRP of \$21,895 for the Mazda5 GS with a financed amount of \$20,000, the C.O.B. for a 24 month term is 5.0%, using an MSRP of \$21,895 for the Mazda3 GS with a financed amount of \$20,000, the C.O.B. for a 24 month term is 5.0%. Down payment may be required. \$1,275 freight and P.D.E. for all Mazda3 models, \$1,275 for all RX-8 models, and \$1,200 for all Mazda5 models. \$65 PPSA, license, insurance, taxes and other dealer charges are extra. **When available on retail lease of new 2006 RX-8 GS, 2006 Mazda3 Sedan GS, 2006 Mazda3 Sport GS and 2006 Mazda5 GS. Total lease obligation for the 2006 Mazda3 Sedan GS (E0435A4000) is \$6,791 including down payment of \$2,495. Total lease obligation for the 2006 Mazda3 Sport GS (E0435A4000) is \$7,751 including down payment of \$2,495. Total lease obligation for the 2006 Mazda5 GS (E0056A4000) is \$15,847 including down payment of \$2,295. For other models see your dealer for details. Lease payment includes freight and P.D.E. of \$1,225 for all Mazda3 models, \$1,275 for all RX-8 models, and \$1,200 for all Mazda5 models. PPSA registration fee of \$34.19 for a 24 month term and \$31.31 for a 48 month term extra. Don't even think about a security deposit. It'd just mean more paperwork for us. And besides: we like you. 70,000 km per year mileage allowance applies, if exceeded, additional 17¢ per km applies. 25,000 km limit also available. Licence, insurance, taxes and other dealer charges extra. Dealer may sell/lease for less. Limited quantities available. Dealer order or trade may be necessary on certain vehicles. Offers available from June 1, 2006 for a limited time only. Lease and Finance on approved credit for qualified customers only. See your dealer for details. **Full amount of the GST rebate, equivalent of 1% GST rebate applied at time of sale.

