

HOT TUBS
WAREHOUSE DIRECT

SAVE 20%-40%
FROM RETAIL

OPEN TO THE PUBLIC
SATURDAY ONLY

OR CALL FOR AN APPOINTMENT

905-693-9230
www.hottubwarehouse.com

HEDGE CEDARS
\$4.99 & up

Arbor GARDEN
CENTRE AND NURSERY



• Ornamental & native trees
• Unique garden accessories & gifts
• Landscaping

905-876-1395
6556 Trafalgar Road, Milton

Escarpment Country Tourism Partner

Salt water for better bathing

Sanitizing swimming pools and hot tubs by adding chlorine or bromine to the water is a time honoured and, unfortunately, a time

consuming and sometimes confusing part of pool ownership. Salt-water chlorine generators can help reduce the amount of work and time needed to maintain your pool.

Used in Australia since the late '60s, over 95% of residential pools there now use this type of system. The benefits of a salt water chlorine system include:

- reduced sanitization maintenance;
- fewer chemicals required
- eliminate the need to buy, transport and store chlorine;
- less irritation after using the pool;
- cleaner, clearer water; and
- softer, silkier water quality.

The level of salt used in salt water chlorine applications is less than one-tenth than that of seawater. This low salt content is actually very close to the natural salinity of the human body and leaves your skin hydrated, not irritated. In fact, many people comment that salt-water chlorinated pool water feels very soft and silky and many cannot even taste the salt in the water.

Salt-water chlorine systems use electrolysis to generate chlorine. As the water passes through a specially designed chlorine-generating cell, the salt (NaCl) is broken down and combines with the water (H₂O) to form chlorine gas (Cl₂) and caustic soda (NaOH). The chlorine generated instantly sanitizes the water and the caustic soda helps adjust the pool to the correct pH levels, which is important for bather comfort. The chlorine and caustic soda then recombine to form salt again and the process repeats itself. Since the salt is not wasted, only minimal salt needs to be added

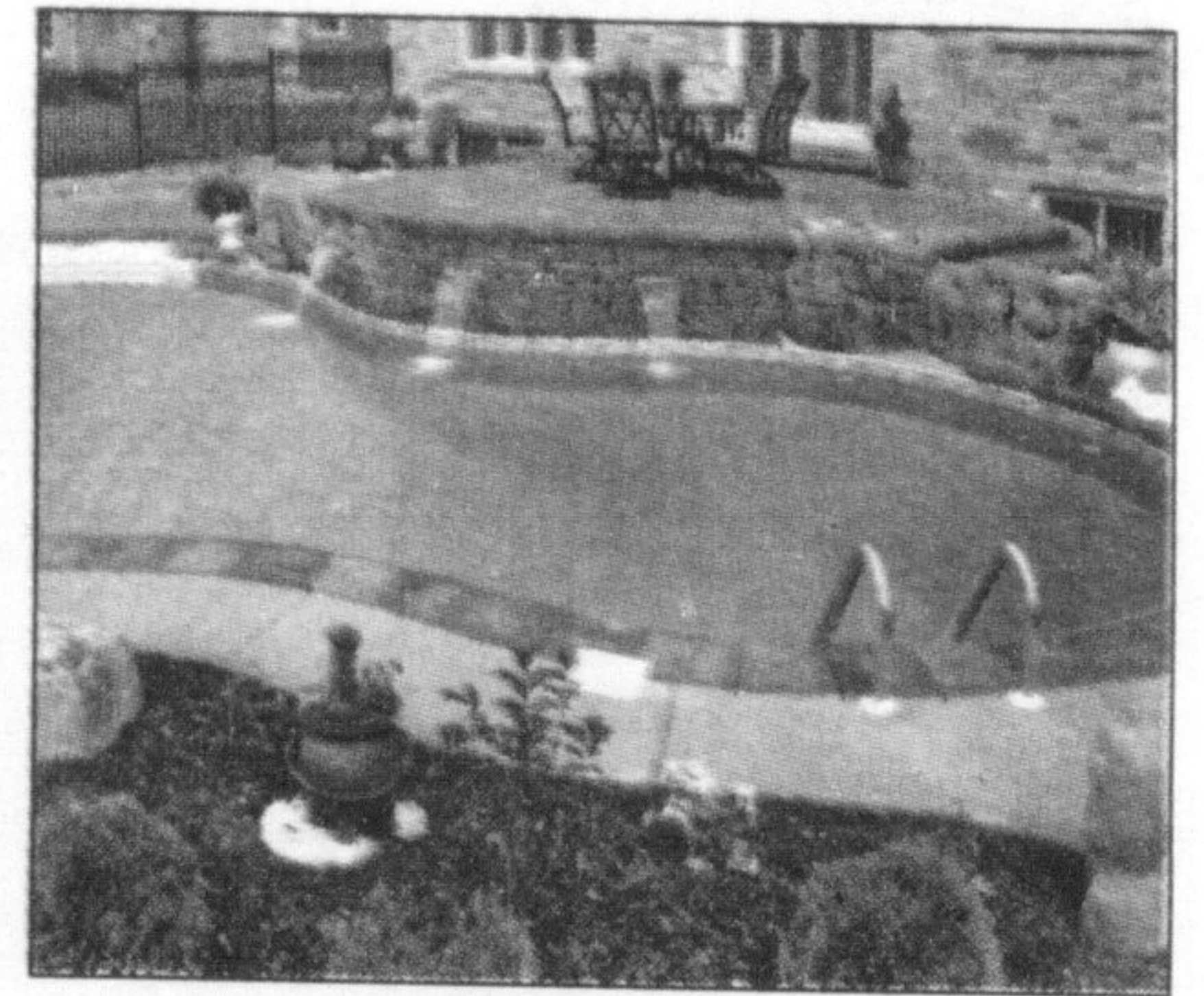
throughout the season and most systems take the guess work out by alerting you when and how much salt you need to add.

This method of chlorination is also very clean. The unit continually produces pure chlorine, so there is no need to purchase packaged chlorine or bromine for your daily requirements, which means there are no fillers to cloud your water, and most units even take care of shocking the pool for you. Water testing requirements are reduced and proper water balance is easier to maintain.

The higher purchase and installation price of these systems is offset over time by the savings in traditional chemical costs and the extra time you will have to enjoy with your family and friends. They are virtually maintenance free and easily retrofitted into existing pools.

To find a dealer near you that sells salt-chlorine generators, you can contact the Pool & Hot Tub Council of Canada at 1-800-879-7066, or you can visit www.poolcouncil.ca.

- News Canada



TERRA Trends
GREENHOUSES

The Elegant Maple

It has great leaves, wonderful texture, stunning spring and fall colour and fits in all gardens? This week's TERRA Trend focuses on the Japanese Maple!

Japanese maples come in a variety of different shapes, sizes, textures and colours and can be used in many different garden settings. Plant these versatile beauties along the edge of a pond, in a container or as a small tree or shrub. Some Japanese Maples have large leaves others are as delicate as lace and their colour can vary from lime green to red and anywhere in between.

The one thing that all Japanese Maples have in common is that they prefer a moist well drained soil, a layer of mulch 2-3 inches thick to prevent drying out and a little bit of protection from the summer sun. Visit your garden centre today discover the wide range of Japanese Maple available.

Listen to **AM900 CHML** **108** **THE NEW Country 95.3**

for more **TERRA Trends**

Where colour lives!
www.terragreenhouses.com

Burlington 905-332-3222 **Waterdown** 905-689-1999 **Milton** 905-876-4000 **Vaughan** 905-832-6955 **7 DAYS A WEEK!**

Thinking Of Landscaping?

Let our friendly staff determine your landscaping needs

7,000 square feet of outdoor display

MORE THAN JUST BRICK:

- COMPLETE LINE OF INTERLOCK
- RETAINING WALLS
- DRIVEWAY EDGING
- PATIO SLABS
- PLANTERS
- GARDEN WALLS
- FLAGSTONE
- ROCKERY STONE
- POTATO STONE
- TRIPLE MIX TOPSOIL
- CEDAR MULCH
- SAND
- RED CRUSH
- POND LINER
- PUMPS
- FOUNTAINS

www.capbrick.com

TRUSTED BY CONTRACTORS & HOMEOWNERS FOR OVER 40 YEARS!

"Your Landscape Superstore"

OPEN FRIDAY & MONDAY

Friendliest Staff
Our expert staff will help you choose the material that's right for you with no high pressure sales tactics.

Do-It-Yourself
We have design and installation videos and do-it-yourself installation instructions.

Immediate Delivery
With our large fleet of delivery trucks we can usually get your material delivered the next day.

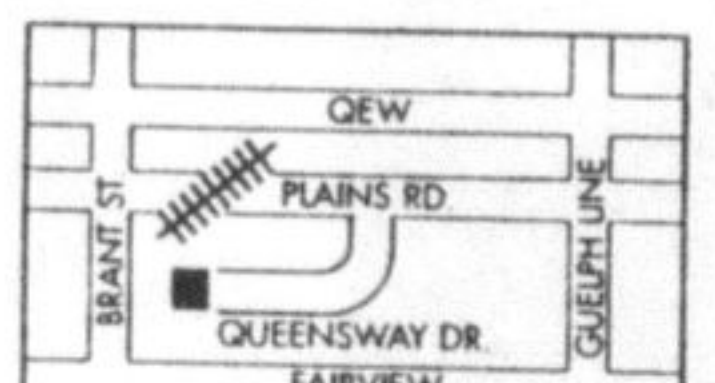
Huge Selection
Come visit our large indoor/outdoor displays and see all the latest products for easy decision making.

Computer Calculations
No need to worry about how many pieces of interlock you may need. Our custom computer program will do all the work for you along with our knowledgeable staff.

Customer Satisfaction
We stand behind everything we sell. We want satisfied customers and work hard to make you happy!

CAPBRICK
2082 QUEENSWAY DRIVE,
East of Brant, south off Plains Rd.
(905) 634-7707

MON - FRI 7AM-6PM
SAT 8AM-5PM



Canada Day
July 1st only Special!

10-inch hanging baskets

3 for \$12.99

While quantities last.

HAPPY CANADA DAY FROM RONA!



All Garden Centres at RONA Home & Garden stores will remain open on July 1st, 8 a.m. to 5 p.m.!

PROUDLY CANADIAN

RONA Home & Garden

All annuals and selected perennials

50% off!

While quantities last.

RONA Home & Garden locations:

Mississauga	3115 Argentia Rd. 800 Boyer Blvd. 2933 Eglinton Av. W
Brampton	2830 Queen St. E 50 Gillingham Dr.
Toronto	768 Warden Av. 1970 Eglinton Av. E 110 West Toronto St.
Cambridge	66 Pinebush Rd.
Kitchener	730 Ottawa St. S
London	820 Blythwood Rd.
Kingston	2342 Princess St.
Woodbridge	67 Colossus Dr.
Windsor	7350 Catherine St.