

Fun for dads at museum

The Halton County Radial Railway offers families a unique way to celebrate Father's Day.

On June 18 from 11 a.m. to 4:30 p.m., the operating streetcar museum will hold its Father's Day Open House. It'll include a presentation on the museum's past, present and future from 1 to 2 p.m. and a guided tour from 2 to 3 p.m.

Best of all, fathers (one per family) will get in free.

"The open house is a new event for the museum," said Caroline Rose, marketing manager for the Ontario Electric Railway Historical Association (OERHA).

Museum co-ordinator Shannon Bettles said this is an exciting time for the museum and the OERHA.

"Due to the generous contribution from the Halton Healthy Community Fund and community partners such as the Halton Region Museum, we are able to focus our efforts on bringing the radial railway up to community museum standards in order to better educate, inform and inspire the public," Bettles said.

The Halton County Radial Railway is located at 13629 Guelph Line. For more information, call (519) 856-9802 or visit www.hcry.org.

Tell your graduate how proud you are of them!

Our special Graduation Section

will run Tuesday, June 20, 2006

\$59.00 + GST

(picture incl.)

Deadline is Friday June, 16th at 4pm.

"No more than 40 words please"

Phone: 905-878-2341

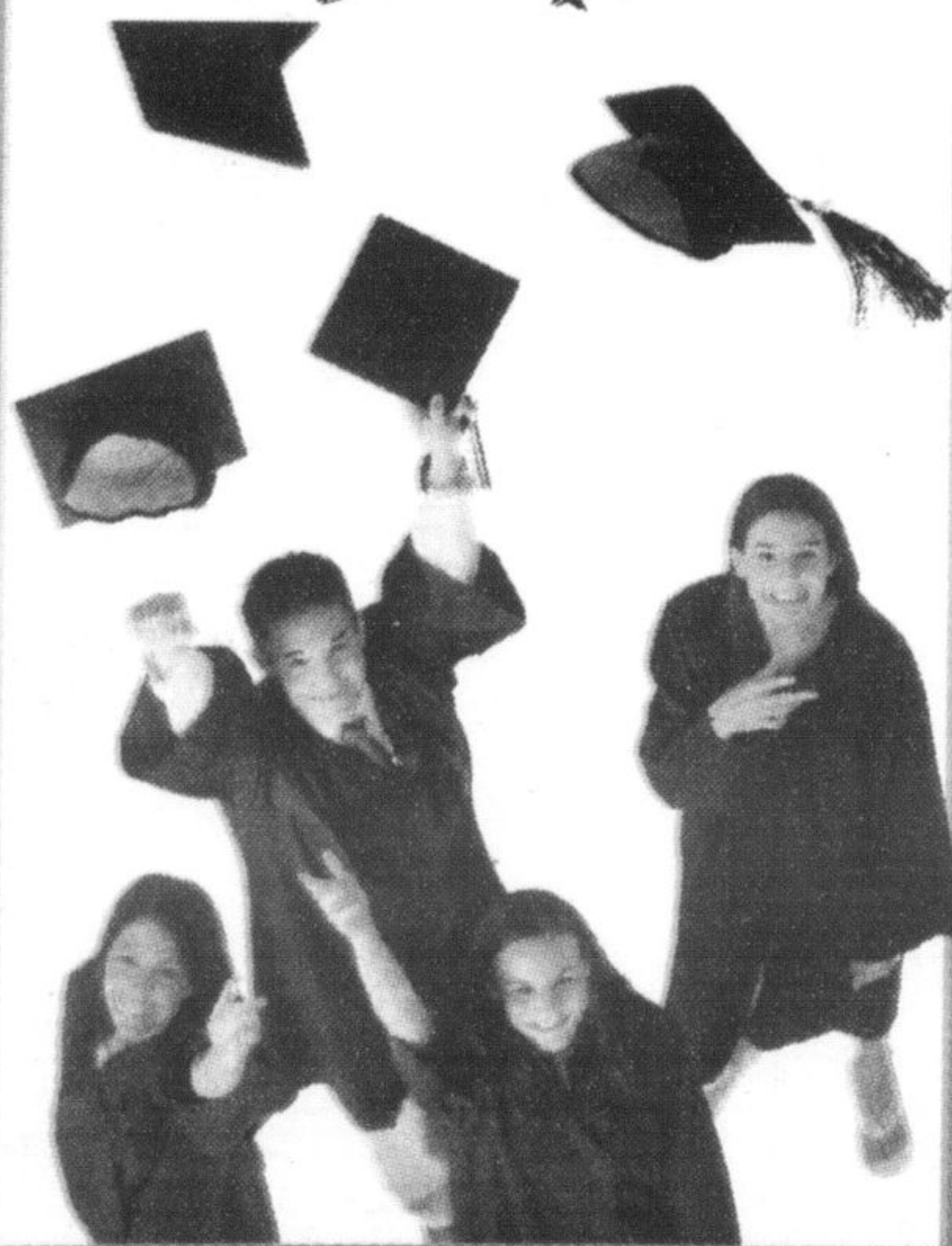
Fax: 905-876-2364

Email:

classified@

miltoncanadianchampion.com

The Canadian Champion



HaltonSearch.com

MAKING IT EASY
AT YOUR FORD STORE

PICK YOUR PAYMENT!

CASH ON DELIVERY	PAYMENT
\$825.00	\$259.00*
\$1,650.00	\$244.00*
\$3,100.00	\$215.00*

2.0L 4cyl, auto, A/C, pdl, AM/FM/CD, heated seats, heated mirrors, body side mouldings, rear wiper, luggage rack, dark toreador red, St#A6050

48 MONTHS

2006 FORD Focus ZXW SE Wagon



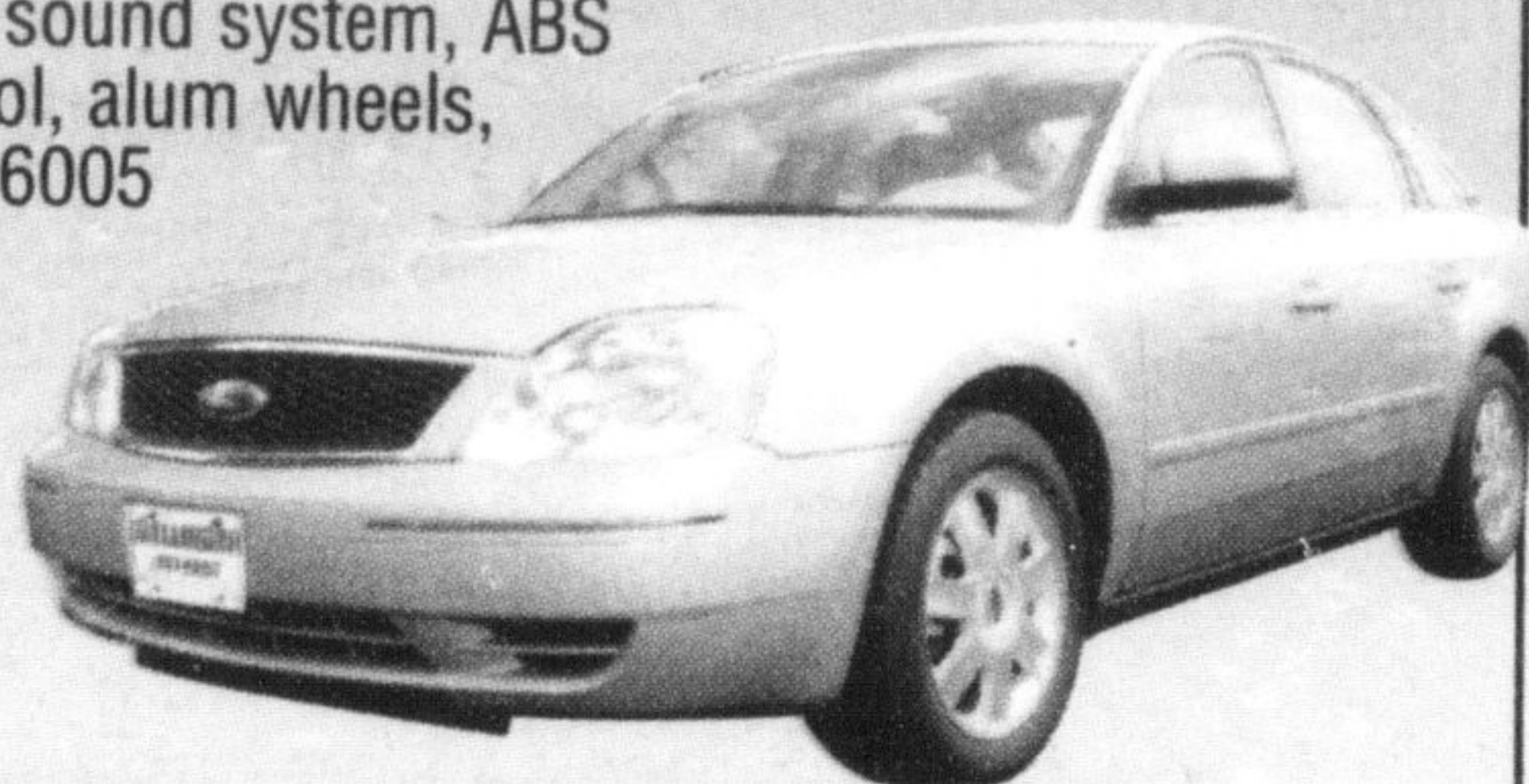
ZERO SECURITY DEPOSIT

NO HIDDEN FEES!

2006 FORD Five Hundred SE

3.0L V6, CVT automatic trans, A/C, P/W, pdl, spd control & tilt, AM/FM/CD, premium sound system, ABS brakes, traction control, alum wheels, Pueblo gold ext, St#C6005

48 MONTHS



PICK YOUR PAYMENT!

CASH ON DELIVERY	PAYMENT
\$850.00	\$349.00*
\$1,900.00	\$329.00*
\$3,000.00	\$309.00*

2006 FORD F150 Supercrew XLT 4x4 (long box)

5.4L V8, auto o/d, A/C, P/W, pdl, spd control & tilt, limited slip rear axle, trailer tow pkg, 7200 GVWR, deluxe mirror pkg, chrome wheels, boxliner, dark shadow gray ext, St#F6125

36 MONTHS



PICK YOUR PAYMENT!

CASH ON DELIVERY	PAYMENT
\$1,250.00	\$415.00*
\$2,650.00	\$379.00*
\$4,250.00	\$339.00*



PURCHASE PLANS

- "A" - Current Employee
- "Z" - Retired Employee
- "X" - Friends & Neighbours

Always Welcome!

*48 month lease, (36 months where indicated) 20,000 km per year, plus applicable taxes, C.O.D. Includes first payment, all fees and license transfer. O.A.C. See Gallinger for full details.

GALLINGER

FORD LINCOLN

655 MAIN STREET EAST. MILTON

www.gallingerford.com

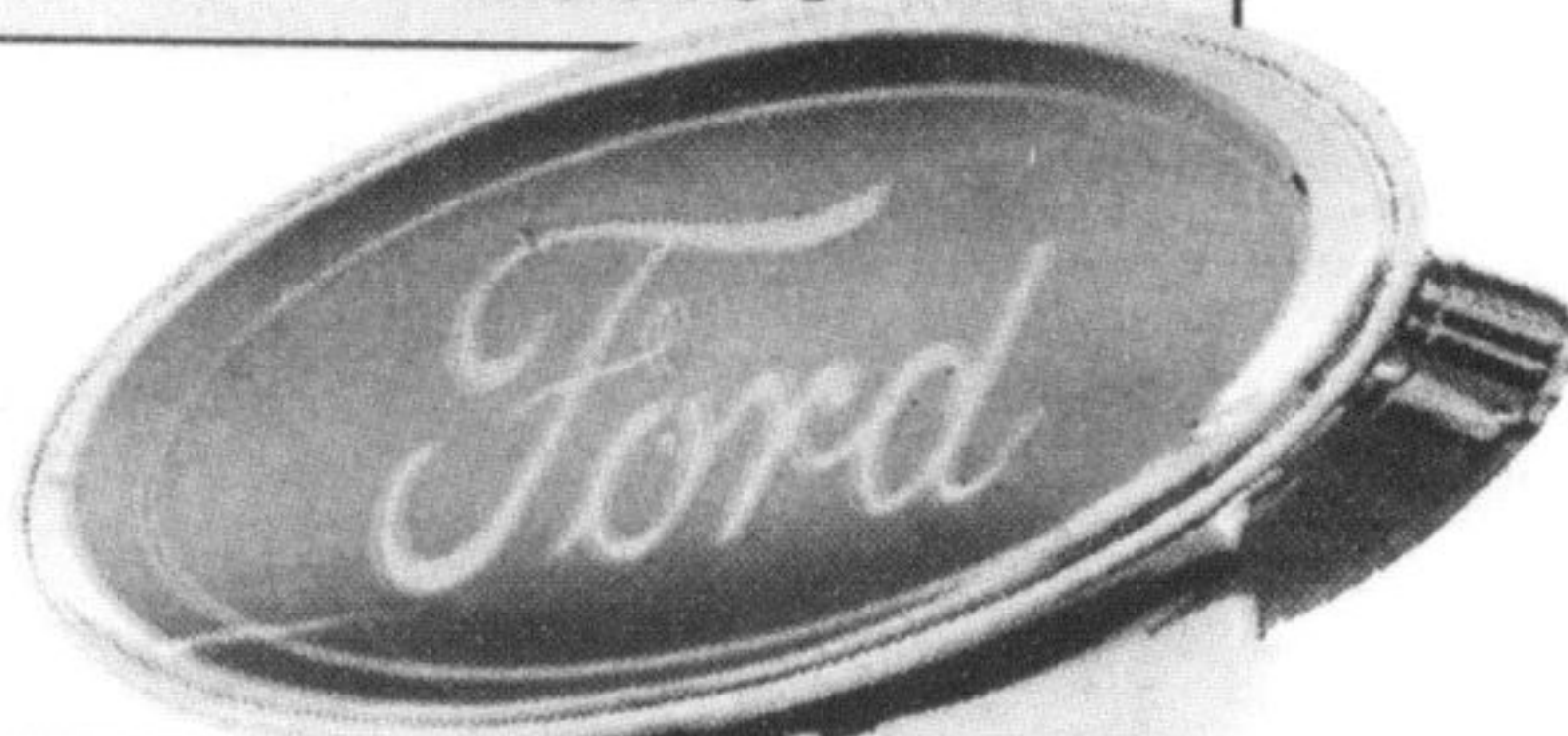
Value & Trust since 1967



GENUINE PARTS & SERVICE

SALES • LEASING • SERVICE • PARTS • COLLISION CENTRE

Direct Parts Line
905-875-0111



LINCOLN

(905) 875-FORD

3 6 7 3