

Surging Senior Red Sox capture Tillsonburg title

By Steve LeBlanc
CANADIAN CHAMPION STAFF

If the Senior Red Sox needed any assurance that taking a crack at this summer's Ontario 'A' eliminations is a good idea, they certainly got it Sunday.

Building on an already encouraging spring, Milton won three games in less than seven hours — two against 'A' level opponents — to claim top spot at the Tillsonburg Tournament.

Tested as much from a stamina standpoint as anything else after heavy rains wiped out Saturday competition, the Red Sox not only prevailed in all three games, but won the first and last in dominating fashion.

They clinched the title with a 9-2 rout of the Burlington Brants, the third straight victory over their league rivals — which served as pay-back for a 4-2 loss in the tournament's consolation semifinals last year.

Jeff MacLeod was a one-man wrecking crew in the championship showdown with two homeruns — one of the grand slam variety — plus a sacrifice fly and a whopping eight RBI.

His first dinger highlighted a five-run fifth inning that essentially put the game away, while error-free defence and some solid mound work by both Adam Finkbeiner and Nathan Tami factored heavily into the lopsided win as well.

The Red Sox' only stiff test of the day came in the semifinal, as opposing Ajax broke a scoreless stalemate in the top of the fourth with an

unearned run. Milton would answer back with four runs in the fifth — three on a bases-clearing double by Dave Teboekhorst — and hung on with a complete-game, two-hit gem by steadily-improving pitcher Adam Ahearn.

Taylor Lawton and Kurt Mitchell had two hits apiece in the semis, which followed a 9-1 pasting of Bolton.



Finkbeiner, Matt Dickson and Adam Boyle combined to limit opposing batters to just a couple of hits, while offensive efforts were highlighted by Lawton's three-run double and multi-hit performances from Steve MacDonald, Mark Sgrignoli and Mike Winter.

Milton kicked off the tournament with last Friday's 8-4 decision over Whitby. Lawton and Kevin Cooper belted out homers to complement Ian Zettle's sharp pitching and a sound defensive campaign.

Suffering a bit of a letdown after the tournament, the Red Sox had trouble recording timely hits in Oakville Monday night and fell 7-3 — which dropped their still impressive overall record to 11-4.

Among the game's few bright spots was the return of injured Reese Davies, who had two hits. Milton out-hit their neighbouring rivals 12-9, but just couldn't cash in on a number of scoring opportunities and lost for the first time in eight games.

The Red Sox return to Brian Best Park tomorrow to host Brampton. Game time, as always, is 1:30 p.m.

We believe... in helping.
Anyone. Anywhere.



PLEASE GIVE 905-875-1022

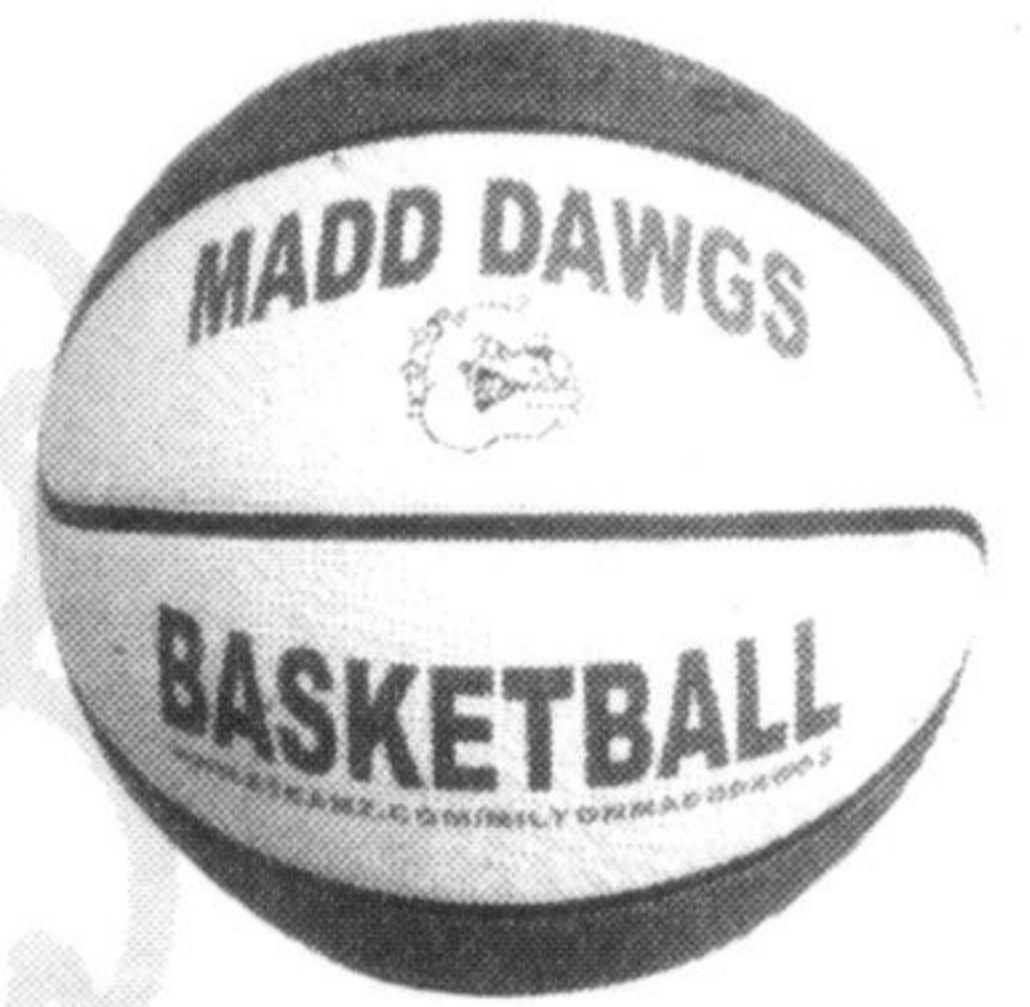
MILTON YOUTH BASKETBALL "MADD DAWGS"

<http://www.eteamz.com/miltonmaddawgs>

SUMMER BASKETBALL CAMP - 2006

TOTAL BASKETBALL - Skills, Strategies, Fun and Games!

- Location: EC Drury Secondary School
 DATES: Monday July 24 - Friday July 28
 TIMES: Camp starts at 9:00 a.m. and ends at 3:30 p.m.
 FEE: \$200.00 (Tax Receipts will be provided)
 • Includes Rawlings Basketball and T-Shirt
 • Daily and Weekly Prizes
 • Lead Instructor: Brian Schroder
 • Engaging and experienced Assistant Instructors
 • Maximum 35 participants (low ratio)



REGISTRATION FORMS:

Please download from our website in the "Handouts" folder.

<http://www.eteamz.com/miltonmaddawgs>

MAIL FORMS AND FEES TO:

Milton Youth Basketball
 420 Main St. E., Suite #558, Milton, ON L9T 5G3



For more information call Brian Schroder: Cell (905) 691-1675 Email: schroderbj@hotmail.com

WAL*MART



FINAL CLEARANCE ON ALL REMAINING IN-STORE STOCK

MARSHAL MANUFACTURED BY KUHMO
 793 ALL-SEASON TIRES
 • Passenger all-season steel-belted radial tires
 • Whitewall sidewall styling
 • Nationwide warranty
 • Available in 70, 75 and 80 series (depending on size).

12"	SIZE
\$10 each 4 for \$40	145R12
All 13"	
\$15 each 4 for \$60	P155/80R13(W) P165/80R13(W) P175/80R13(W) P185/80R13(W) P175/70R13(W)
All 14"	
\$20 each 4 for \$80	P185/75R14(W) P195/75R14(W) P205/75R14(W) P215/75R14(W) P185/70R14(WL) P195/70R14(WL)
All 15"	
\$30 each 4 for \$120	P205/75R15(W) P215/75R15(W) P225/75R15(W) P235/75R15(W) P205/70R15(W) P215/70R15(W)



Available only while quantities last!

Specialty Oils For Specialty Equipment Including Farm Machinery



- Anti-wear Hydraulic 32, 46 or 68
- Universal Tractor Fluid
- Diesel Engine Oil SAE 15W40.

#1043536/58/65/8447/67766.

YOUR CHOICE
30⁹⁸
 EACH
 EVERY DAY!



Diesel Engine Oil YOUR CHOICE SAE 30 or 40 #1048454/74819.
31⁹⁸
 EACH
 EVERY DAY!

FINAL CLEARANCE ON ALL REMAINING IN-STORE STOCK

Super Sport Radial HT Light Truck Tires

- Meets the demands of the off-road enthusiast
- Dependable traction in sand, mud, snow, dirt and gravel
- Smooth ride
- Longer tread life and better traction
- Exceptional multi-purpose tire



Available only while quantities last!

Size	Each
P215/75R15 SL (OWL)	\$75
P235/75R15 SL (OWL)	\$80
T235/75R15 C (OWL)	\$90
T235/65R16 F (BLK)	\$110
T235/75R16 E (OWL)	\$115
T265/75R16 D (OWL)	\$90
30x9.50R15LT C (OWL)	\$90
31x10.50R15LT C (OWL)	\$110
33x12.50R15LT C (OWL)	\$125
35x12.50R15LT C (OWL)	\$125

*Only available in selected stores with Automotive Centres.

GOODYEAR Wrangler AS P-Metric Truck Tire*

- All terrain tread design
- Polyester cord body
- Smooth quiet ride
- Dependable all weather traction

80,000 km
 Wal-Mart Nationwide Treadwear Warranty
 Details available in store.
94⁹⁶
 EACH
 EVERY DAY!



Energizer "Marine Starting"				
• 30 - Month Warranty				
• 12 - Month Free Replacement				
PART NO.	CA	RC	EXCHANGE PRICE*	WAS NOW
24M-625N	625	95	57.96	45.96

Energizer "Dual Purpose"				
• Marine Starting				
• Deep Cycle				
• 30 - Month Warranty				
• 12 - Month Free Replacement				
PART NO.	CA	RC	EXCHANGE PRICE*	WAS NOW
27DC-850N	850	180	97.96	78.96
27DC-700N	700	140	86.96	68.96

Prices effective until June 22nd, 2006 or while quantities last.

WE SELL FOR LESS every day!

Exclusive 2 for 1 Offer!

Aboard expedition cruise ship POLAR STAR

Experience the primal and proud Atlantic landscape - Depart historic Halifax and visit Fortress of Louisbourg National Historic Site, St. Pierre (France), Labrador coast, outposts of Newfoundland, Gros Morne National Park, L'Anse aux Meadows, Bonavista, and St. John's. A soft-adventure expedition cruise.

Sept 28 - Oct 9, 2006 • Only 100 passengers • 11 night cruise (includes accommodations, all meals & excursions) • All outside cabins

• Experienced onboard lecturers, guides and naturalists.

Exciting Nova Scotia pre- and post- cruise excursions available.

Call your small ship cruise expert today!



905-878-2886

16 Martin St. Milton, ON L9T 2P9



EXCLUSIVE TOURS ...the Experts in Small Ship Cruising

Hunter Green Equestrian Centre

6207 Walkers Line

905-332-0840

Riding and Sports Camp

Limited spaces still available

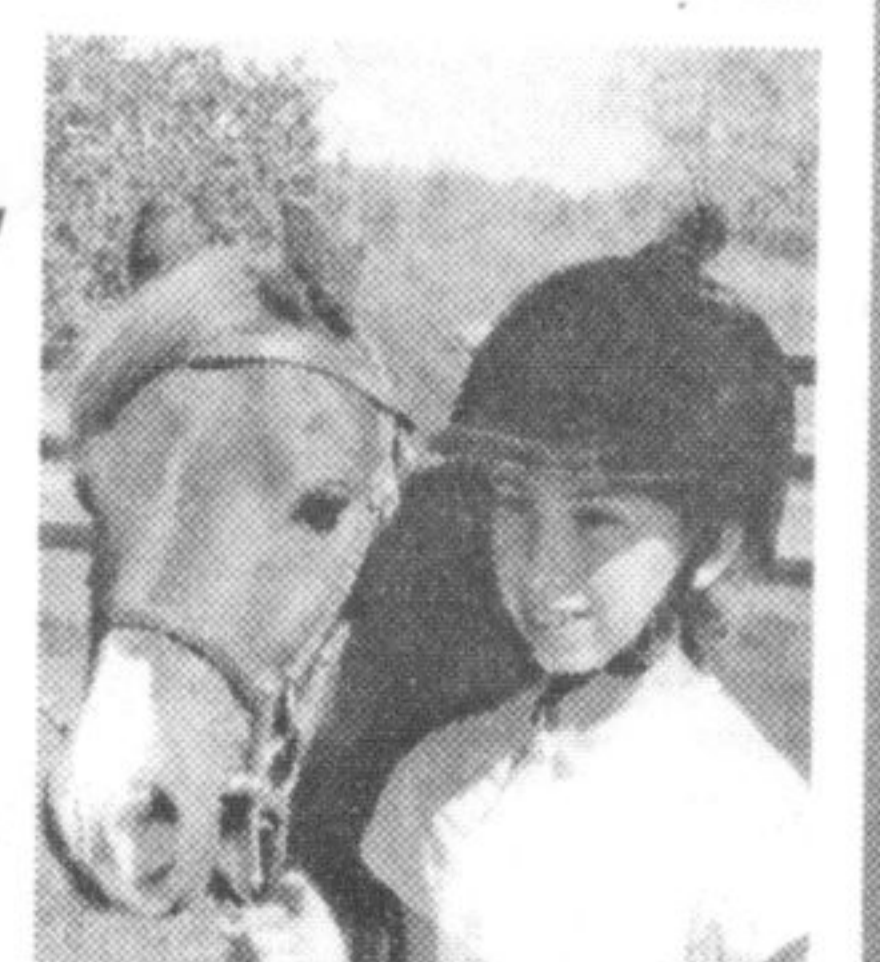
Registration Dates

- Sat. June 10 . . . 2-4pm
- Sun. June 11 . . . 1-4pm
- Sat. June 17 . . . 2-4pm
- Sun. June 18 . . . 1-4pm
- Sat. June 24 . . . 2-4pm

or call to book an appointment

Boys & Girls ages 5-15

- Camps include Lunch, Snacks, Beverages, Riding, Soccer, Basketball, Volleyball and Arts & Crafts.



YEAR ROUND RIDING LESSON PROGRAMS AVAILABLE
 PRIVATE/SEMI PRIVATE & GROUP LESSONS • AGES 6 THRU ADULTS