

# The Canadian Champion

Milton's Community Newspaper Since 1860

Weekend Edition

**ZAK'S PHARMACY**  
Milton's Independent Pharmacy  
• Free Delivery  
• 10% Seniors Discount  
• All Drug Plans Accepted  
• Written Drug Info. Available  
"At Zak's We Care About Your Health"  
70 Main St. E. 875-2424

NEWS  
**Police chief bids farewell**

SPORTS  
**Reding Royals reign supreme at OFSAA**

A & E  
**New gallery features 6 artists**

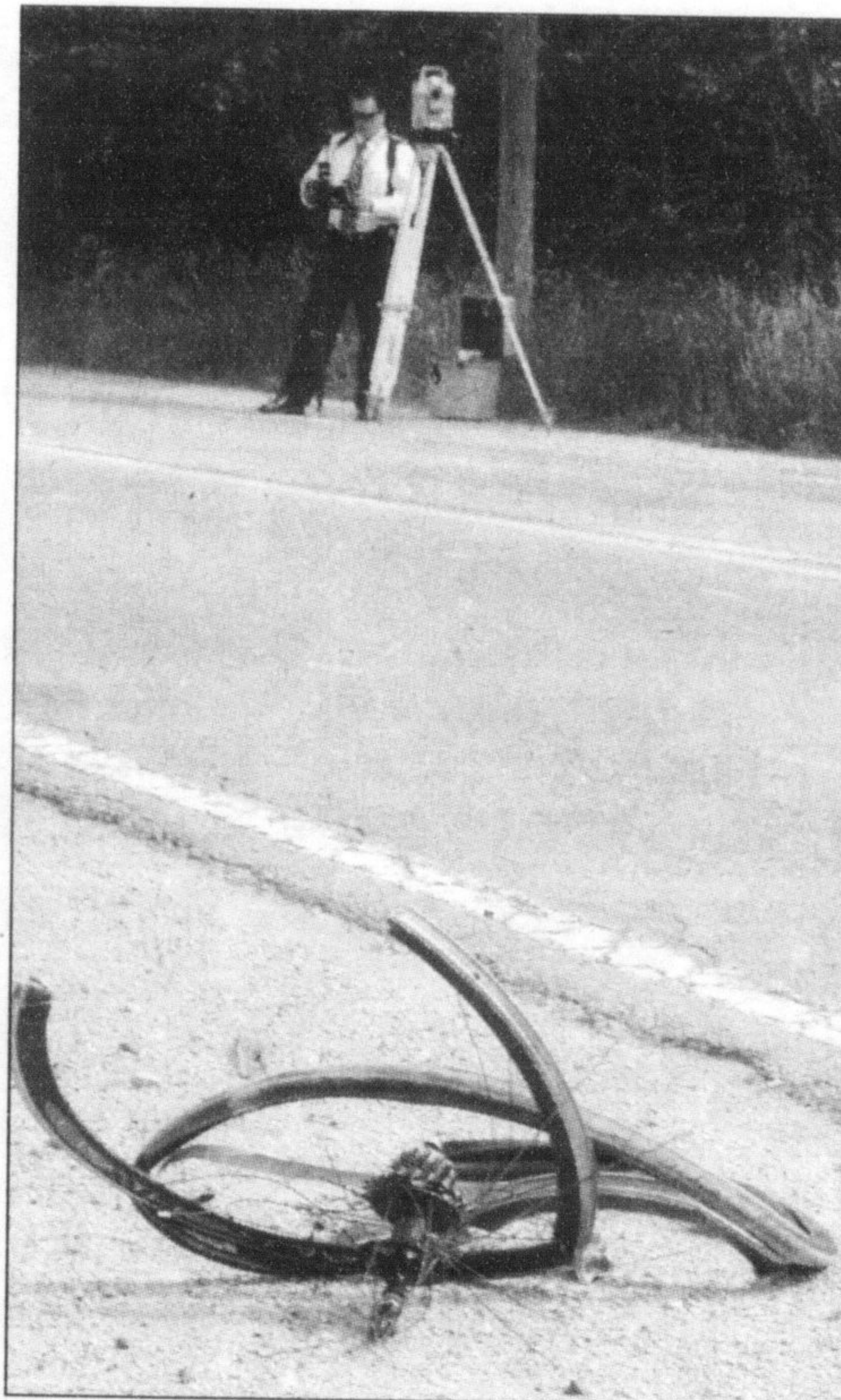
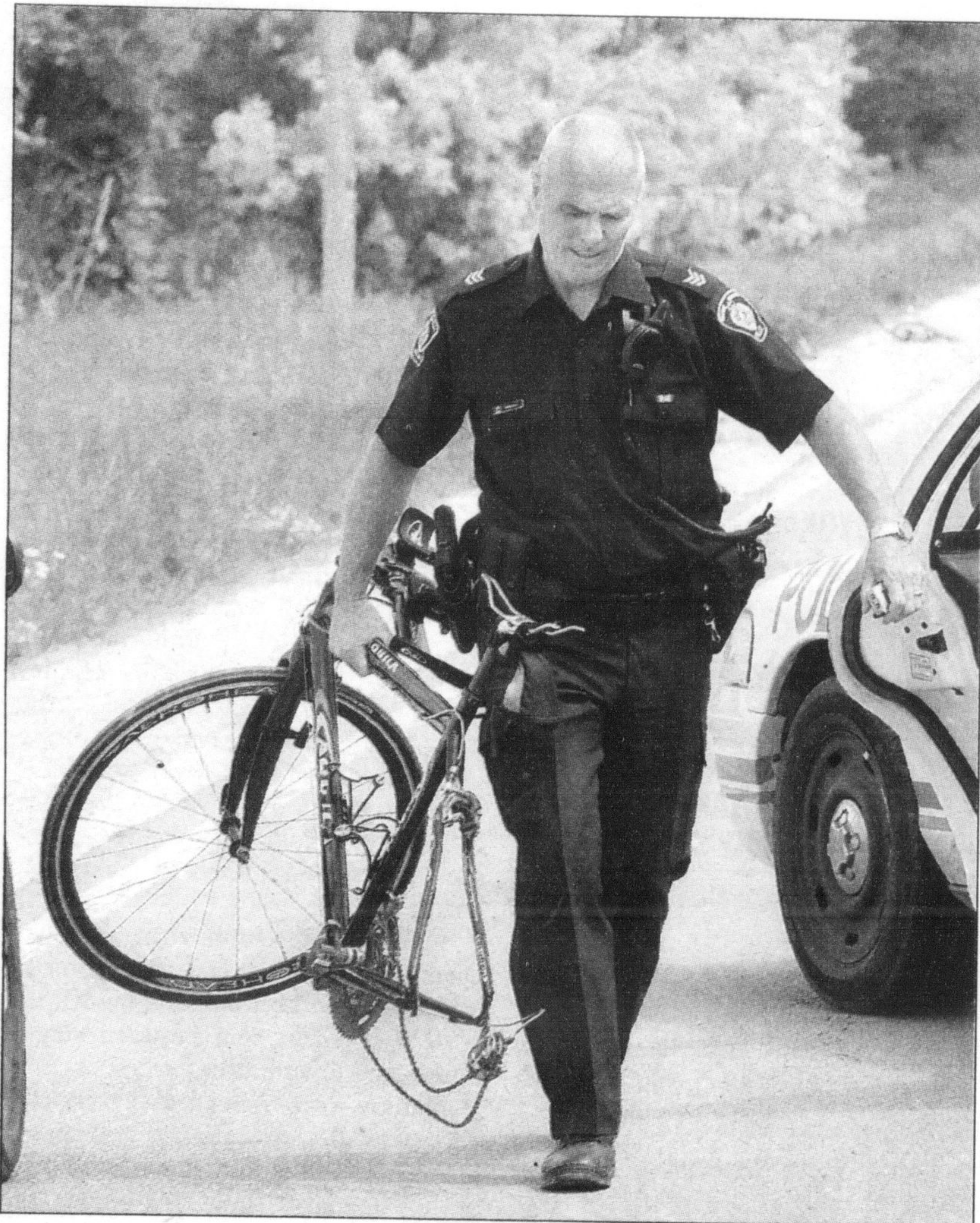
**KAREN'S FLOWER SHOP**  
Visit us at  
www.karensflowershop.com  
487 Laurier Ave.  
878-2881

A Metroland Publication • Vol. 147 No. 26

Friday, June 9, 2006

60 Pages • \$1.00 (incl. G.S.T.)

## OPP officer killed while cycling on Tremaine Rd.



GRAHAM PAINE / CANADIAN CHAMPION

**TRAGEDY ON TREMAINE:** Left, A Halton Regional Police sergeant carries away the twisted remains of a bicycle at the scene of Tuesday's accident in which an off-duty Burlington OPP officer was struck by a dump truck while cycling on Tremaine Road. Sadly, the officer died in hospital. Above, Halton police Det. Const. Steve Anderson investigates as the rear wheel lies on the road.

A Burlington OPP officer is dead after being struck by a dump truck while riding his bicycle on Tremaine Road Tuesday.

Gregory Stobbart, 45, had been riding his racing-style bike north on Tremaine Road at about 12:30 p.m. when a five-ton truck approached from behind, police said.

Halton Regional Police Staff Sgt. Glen Randall said the 30-year-old truck driver, a Grimsby man, drove toward the middle of the two-lane road to go around the cyclist when he noticed a vehicle approaching in the opposite direction.

He swerved back into his lane and the mirror of the truck hit Stobbart, who then struck his head on the truck. He was taken to Hamilton General Hospital with head injuries, Randall said, where he died later that evening.

Stobbart was an 18-year veteran of the Ontario Provincial Police. He moved with his family to Burlington when he was transferred to the Caledon detachment in May.

Tremaine Road was closed between Derry Road and Main Street for about four hours. The Halton Regional Traffic unit are continuing the investigation.

Anyone with information is asked to call the Milton police station at (905) 825-4777, ext. 2410, or Crime Stoppers at 1-800-222-TIPS (8477).

## Black bear wandering around rural Milton

By Melanie Hennessey  
CANADIAN CHAMPION STAFF

A black bear was spotted in several rural north Halton locations by local residents this week.

The approximate 200-pound animal — which Ministry of Natural Resources (MNR) officials are saying isn't considered a threat to humans — was sighted in Nassagaweya and also in Halton Hills around Third and Fourth lines.

The bear was reportedly seen by a motorist Monday night on Third Line near Dufferin Aggregates' Acton quarry.

An hour later, homeowners on Fourth Line in the Glen Lawson Road area saw it on their back porch eating birdseed and suet, said Halton Regional Police Det. Sgt. Peter Hodgson.

"Eventually he got tired of eating and left," he said.

Shortly after that, it was spotted crossing Glen Lawson Road heading toward the quarry. While police didn't have an exact location

in Nassagaweya where the bear was seen, The Champion received a phone call Tuesday about a bear that was apparently sighted around Sixth Line and No. 15 Sideroad.

There have been a number of black bear sightings recently in the Guelph/Wellington County area.

However, MNR Halton/Peel/Toronto area supervisor John Almond said he doesn't think it's the same bear that has been spotted in north Halton, noting the size descriptions are different.

• see THESE on page A14

## Inside Today's Champion

OPINION	A6
CLASSIFIED	A22
DATELINE	B5
REAL ESTATE	C8

www.haltonsearch.com

**Inserts:**  
**FULL DISTRIBUTION**  
LOBLAWS • ZELLERS • WALMART • MARKS WORK WAREHOUSE  
• FOOD BASICS • LEON FURNITURE • OUR COMPLIMENTS  
• MINISTRY OF HEALTH • STREETVILLE ELECTRONICS  
**PARTIAL DISTRIBUTION**  
IDA • TWICE THE DEAL PIZZA • M&M'S • SEARS  
CANADIAN TIRE • NO FRILLS • FORTINOS • HOLLAND PARK  
HOME HARDWARE • CERTIFIED BBQ EXPERTS • PRICE CHOPPER  
• SOBEYS • THE BRICK • GOEMANS APPLIANCES • HOME @ EASE  
• SUPERSTORE • RYAN'S PET FOOD • SHOP & SAVE • BEST BUY  
• A&P • FUTURE SHOPSEARS • THE SOURCE BY CIRCUIT CITY  
• MICHEALS • HOME DEPOT • BUSINESS DEPOT • ROGERS PLUS  
• SHOPPERS DRUG MART

MILTON TOYOTA

www.miltontoyota.com

**COOLING SYSTEM SERVICE** \$89.95 plus taxes

PREVENTS OVERHEATING & MECHANICAL BREAKDOWN

- Includes pressure test cooling system & checks for leaks.
- Flush complete system
- Replace with quality GM coolant

\* Most vehicles, coolant extra.

**Wallace**  
PONTIAC • BUICK • CADILLAC  
905-878-2355

801 MAIN ST. E. MILTON  
Mon., Wed., Thurs.: 7:30 AM - 6:30 PM  
Tues.: 7:30 AM - 8PM Fri.: 7:30 AM - 6PM  
Sat.: 8:30 AM - 2:00 PM

FREE LOCAL SHUTTLE

**Thank You!** Milton & District Horticultural Society would like to thank the following businesses for their support and donations. With their help and our enthusiastic purchasers our plant sale was a huge success.

A & P Food Market	Food Port	Langholm Nurseries	Subway, The Kranes
A Country Mile	Gord Hassal	Les-Fleurs - Kathleen	Taylor Nurseries
Andrews Scenic Acres	Great Glasses	Loblaws	Teresa's Garden Centre
Arbor Garden Centre	Hair Associates	Lost Horizons - Acton	Terra Nurseries
Bill Schreiber	Harrop House Gallery	Milton Greenhouses	Triffids Plants - Georgetown
Canadian Tire	Harwood Soil and Nursery	M Putzer Hornby Nurseries	Van Dongen's Tree Farm
Country Depot	Home Depot	PAO Horticulture	Wal-Mart Canada Company
The Cutting Edge	Home Hardware	Philip's Garden Statuary	Zellers Inc.
Crawford's Country Gardens	J R Enterprises - Greenhouses	Richard Cooper	
D & G Nurseries - Georgetown	Jade Garden Greenhouses	Signature Signs	
Daisy Maid Gardening Service	John Poppe Tree Farm	The Spice of Life	
Fernridge Landscaping	Karen's Flower Shop	Springridge Farms	
The Flower Shed	Ladybug Gardening Services	Starbucks Coffee Company	

A special thank you to the community for all their support through the years.  
Proceeds will be used towards the gardens in Milton and in promoting horticulture in our district.

Milton & District Horticultural Society