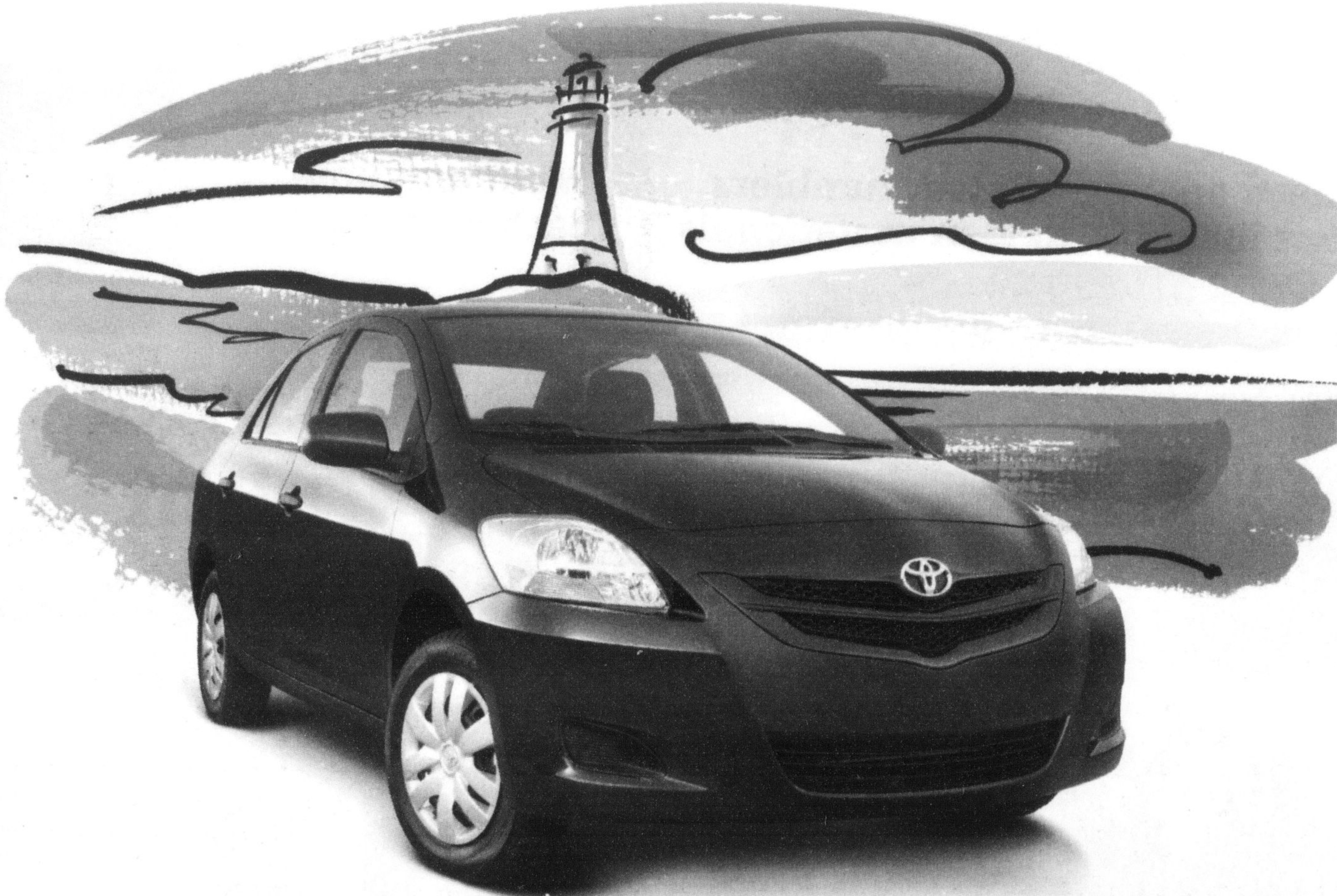
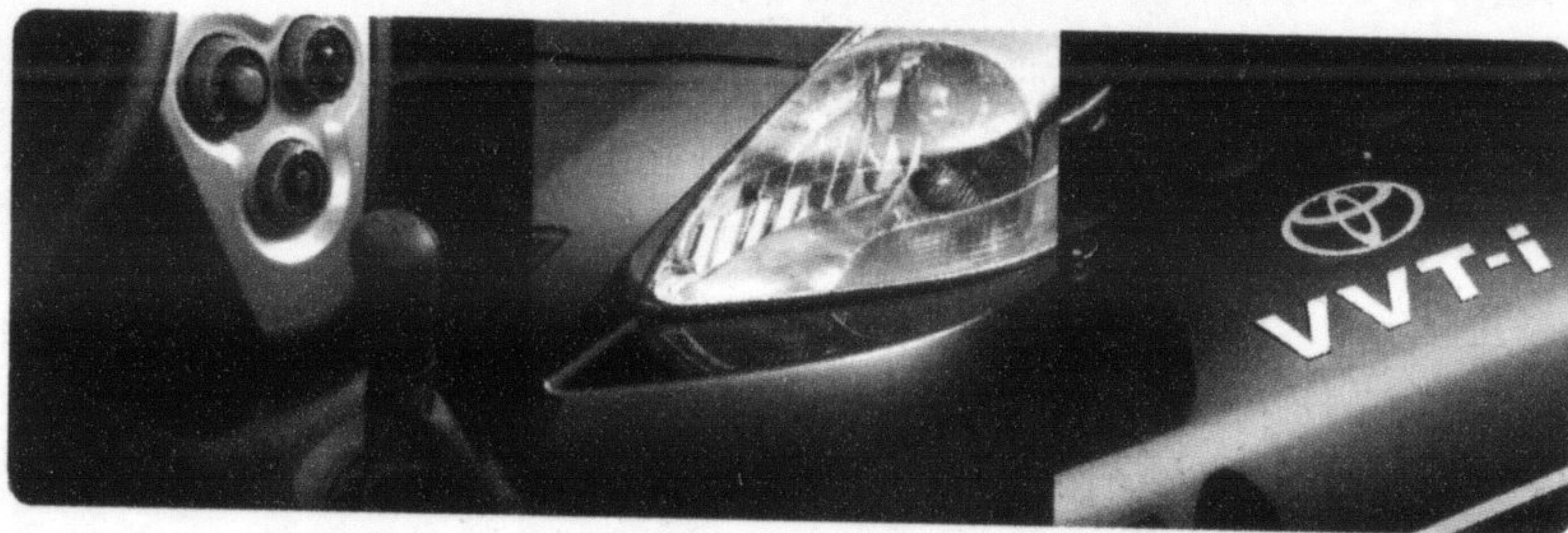


MILTON  TOYOTA




CANADA'S BEST DRIVES JUST GOT BETTER. INTRODUCING YARIS WITH A TRUNK.



Presenting Yaris with a trunk, born in Europe - bred for Canadian fun. Yaris is ready for action and makes short work of almost every journey with its powerful yet fuel-efficient VVT-i equipped engine. Choose from four different packages or take your new Yaris to a new level of self-expression by adding some very cool custom-designed Toyota Accessories. Yaris with a trunk. More Yaris to love.




MILTON  TOYOTA

400 Steeles Avenue • 1-800-617-4025
www.milontoyota.com

LEASE FOR \$199* @ 6.9% APR
PER MONTH FOR 60 MONTHS WITH \$1,574 DOWN.
FREIGHT AND P.D.E. INCLUDED

\$14,530 MSRP**

- 1.5L, 106 hp VVT-i engine (Variable Valve Timing with Intelligence) • ETCS-i (Electronic Throttle Control System with Intelligence)
- ULEV II (Ultra Low Emissions Vehicle)
- 4 cylinder, aluminum alloy block
- 5 speed manual transmission • Power assisted brakes • Driver and passenger airbag supplementa restraint system (SRS)
- Tilt steering • Cabin air filter • Rear seat heater ducts • Intermittent wipers with mist feature • Tachometer • AM/FM stereo CD with MP3/WMA player & more.

 HWY 5.5L/100 KM (51 MPG)†
CITY 6.9L/100 KM (41 MPG)†

GET GOING CANADA
DRIVE THE WORLD'S GREATEST COUNTRY

*Leasing and financing plans from Toyota Financial Services. O.A.C. Lease offers valid on 2007 Yaris (Model B1903MA). MSRP of \$14,530 at 6.9% for 60 months. Monthly payment includes \$1,090 freight and PDE. Down payment or trade equivalent of \$1,574 plus first payment due at lease inception. Security deposit of \$250 required. Total lease obligation of \$13,513.95 and purchase option price of \$5,521.40. License, registration fees, insurance and taxes extra. Based on a maximum of 120,000 KMS. Additional KM charge of \$0.07 for excess kilometers if applicable. **MSRP of 2007 Yaris (Model B1903MA) is \$14,530 financed at 5.9% APR equals \$280.23 per month for 60 months. Cost of borrowing is \$2,283.80 for a total obligation of \$16,813.80. Freight and PDE cost of \$1,090. License, registration, insurance and taxes extra. † These estimates are based on the Government of Canada's approved criteria and testing methods. The actual fuel consumption of these vehicles may vary. Refer to the Government of Canada publication EnergyGuide Fuel Consumption Guide 2006. All rights are reserved.

Competition for plant down to 6 proposals

• from POWER on page A1
neurs. Last year, it put out a call for a 500-to-1,000-mega-watt hydro generating station to ease the electricity crisis for the western Greater Toronto Area. Of the initial 13 proposals, OPA has narrowed its competition to six.

These six will now hold public meetings over the summer to gauge public reaction.

The first to announce its proposal is TransCanada Energy Ltd., which is proposing the Halton Hills Generating Station.

A public meeting has been scheduled for tomorrow from 4:30 to 8:30 p.m. (presentation at 6:45 p.m.) at Pineview Public School (corner of No. 5 Sideroad and Trafalgar Road)

The proposal is for a 680-mega-watt natural gas-fuelled, combined cycle power plant located on the southwest corner of Sixth Line South and Steeles Avenue in Halton Hills' 401-407 Gateway Business Park (401 Corridor).

So far no other companies have publicized their proposals, and due to confidentiality, the OPA won't release their names, Bradley said.

However, he noted that the selected plant (all utilizing natural gas) would likely be located in Halton Hills or Milton since the generating plant will be tied into the Trafalgar Road transformer station, which is one of three stations that supply power to the GTA.

A typical 600 mega-watt natural gas-fuelled power plant is located on 10 to 15 acres with at least two 150-foot towers. It likely wouldn't run 24 hours a day, seven days a week, but primarily through the daytime hours of the week in peak hours.

Ministry of Environment and Energy sets stringent requirements for emissions, and Bradley said the proposed projects would be "as benign as your gas furnace, properly cleaned and vented. It will be a fairly non-event as far as large power generators go."

The turbines are housed in a building and from 200 to 400 yards away, the typical sound would be akin to the air conditioning sound of a large building, Bradley said.

He also assured councillors once OPA awards the contract, the municipality will have site plan control on issues such as buffering.

Possible benefits to the chosen municipality would include the payment of development charges during construction and future taxes.

Bradley also added that these types of companies are usually "good corporate citizens" that contribute to their communities through sponsorships and charity work.

The OPA will award one of the six with the contract by the end of September.

The plant is expected to be up and running by 2010.