

Home, Lawn & Garden

Lawn tractors:

New ergonomic designs enhance comfort, minimize soreness and fatigue

(NC)—If you are planning to invest in a new lawn tractor this season, you're in luck. Gone are the days of ringing ears, vibrating feet and aching backs. Recent innovations have made lawn tractors more comfortable than ever.

While there are many factors to consider when buying a lawn tractor, Sebastiaan Selders, product manager at Husqvarna, suggests choosing a tractor that includes a few key comfort features.

- **Roomy Cockpit** – Improved step-through designs enable users to get on and off the tractor with ease. A sloped and tapered hood improves visibility.

- **Intuitive Controls** – Look for controls that are simple to use and require minimal effort, such as a spring-assisted cutting deck lever. An easy-to-maneuver steering system, such as Husqvarna's new dual draglink design, also minimizes effort.

- **Enhanced Driver Position** – A high-back seat with at least 6" of fore/aft

adjustment provides a comfortable position for riders of all sizes.

- **Solid Chassis** – New tractors with fully welded chassis increase rigidity and responsiveness even in tough mowing conditions.

- **Creature Features** – While cruise control, hour meters and drink holders

are now common, some tractors even include a 12 Volt DC power outlet, cargo



BEST BUY CORRECTION NOTICE
 To our valued customers: We apologize for any inconvenience caused by an error in our flyer dated: May19-May26.
 Product: Creative Labs 512MB MP3 Player. On the front cover of our May 19 flyer, we state that this product is also available in red, silver and black. In fact, it is available in red/silver and black. SKU: 10072021

FUTURE SHOP CORRECTION NOTICE
 The Exorcism of Emily Rose (DVD) M2106809/M2107136. On pg. 7 of our May 12 flyer, we state that this product comes with a coupon for the movie The Da Vinci Code. In fact, it does not.
 We sincerely apologize for any inconvenience this may have caused our valued customers and thank you for your patience.

nets and cell phone holders.

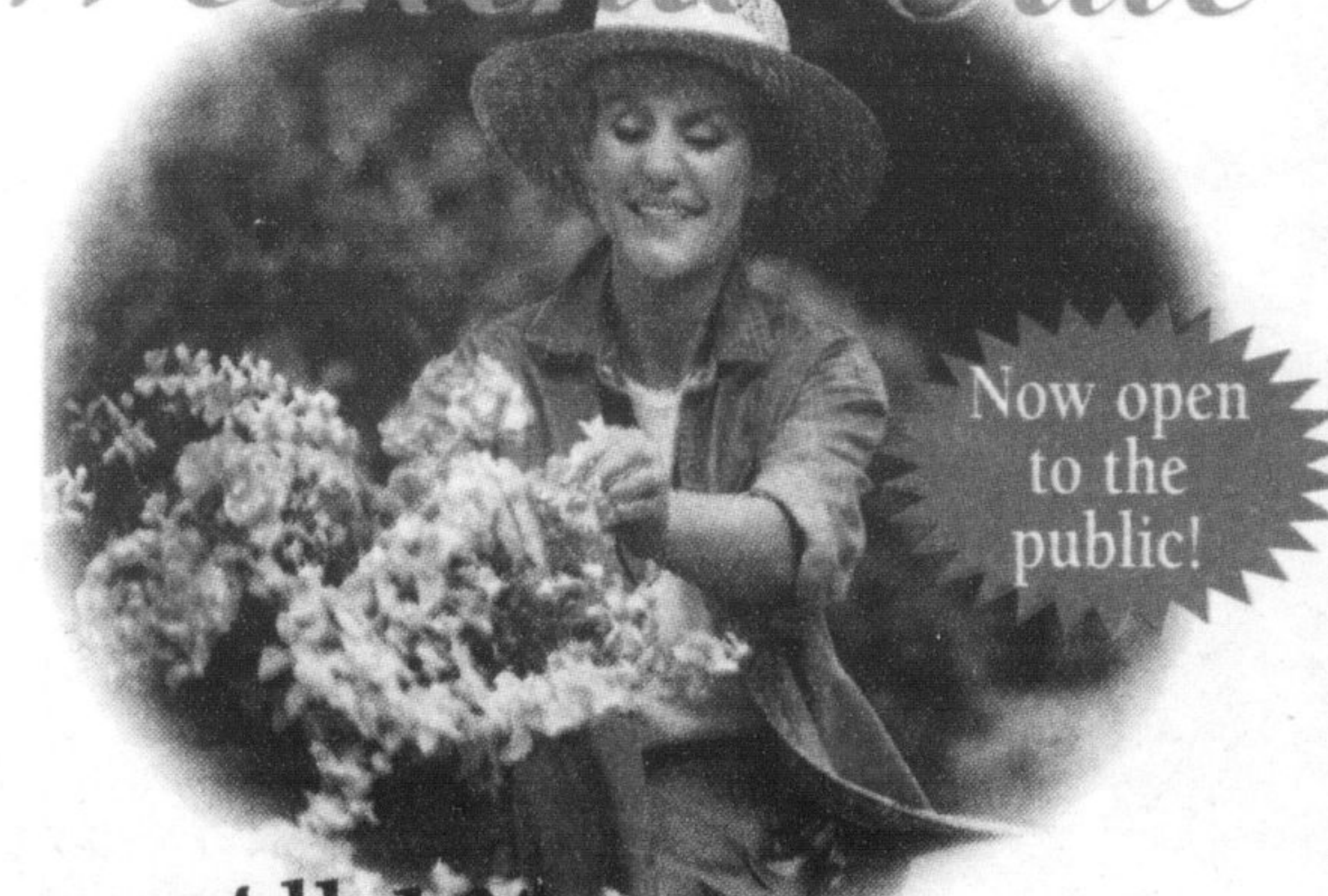
With these advancements in mind, your dealer can help you find a tractor that's right for your home landscaping needs. More information is available at www.husqvarna.com or call 1-800-HUSKY-62 to find a dealer near you.

Arbor GARDEN CENTRE AND NURSERY

 • Ornamental & native trees
 • Unique garden accessories & gifts
 • Landscaping
905-876-1395
 6556 Trafalgar Road, Milton
 Escarpment Country Tourism Partner

GREWAL GARDENS ~Wholesale & Retail~

Victoria Day Weekend Sale



Now open to the public!

All 10" Hanging Baskets **\$8.99** each Reg. \$11.50

Perennials
 Gallon Pot **\$2.99**
 Reg. \$7.99

Flats of
 Impatiens **\$8.99**
 Reg. \$10.50

Sale Ends Tuesday May 23, 2006.

OPEN 7 DAYS A WEEK! Mon-Sat 8am-8pm • Sun 8am-7pm

Many More Specials!

6626 Trafalgar Road, Hornby
 (Between Britannia & Derry)
905-878-7107

Scotts TurfBuilder Pro Lawn Fertilizer

12.5lb bag **\$14.97** reg \$17.99
 28.2lb bag **\$29.97** reg \$36.99



Top Soil, Sheep & Cattle Manure

5 Bags for **\$12**



Daylilies & Hostas

1 Gallon Pot **\$6.97** reg \$9.99



Metal Trellis Selected Styles

50% off

Scotts TurfBuilder Pro Weed & Feed

14.8lb bag **\$19.97** reg \$24.99
 28.6lb bag **\$36.97** reg \$42.99



Triple Mix Soil

4 Bags for **\$12**



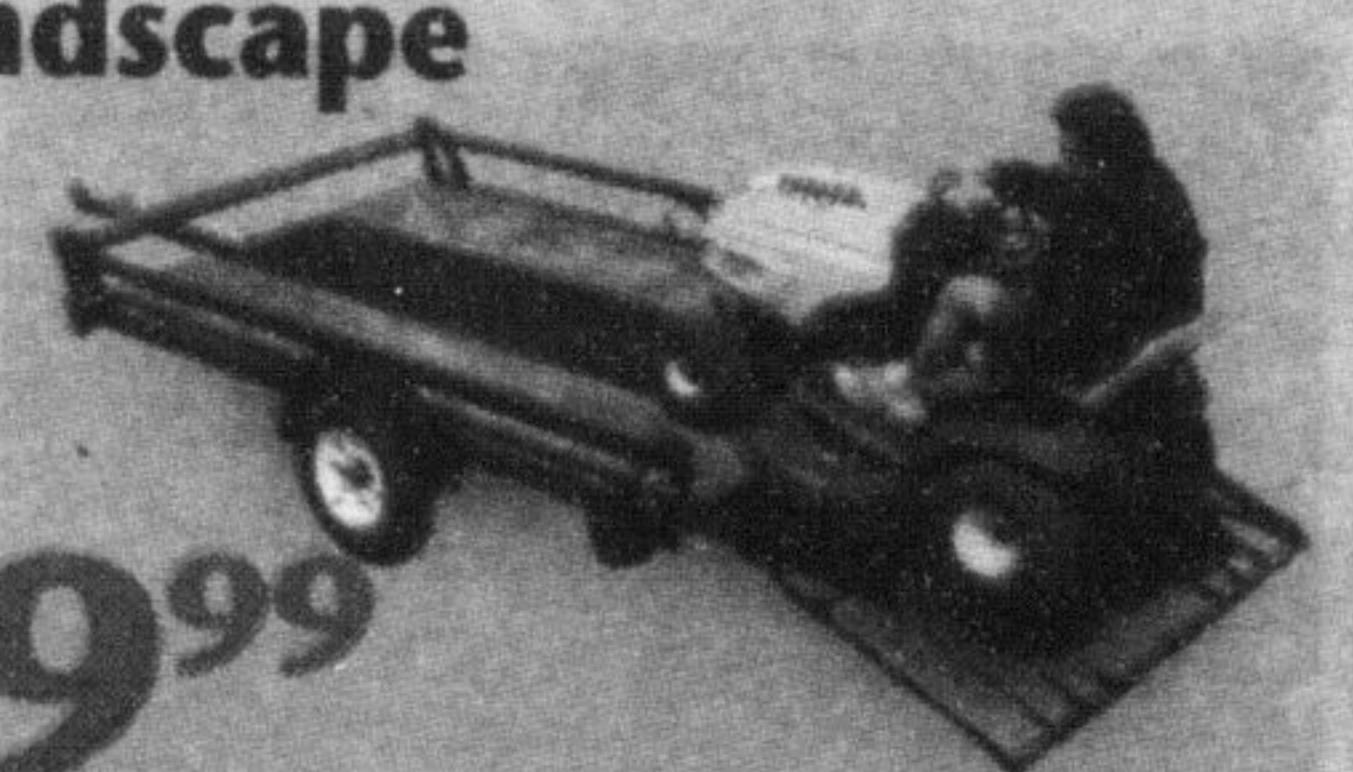
Geraniums

4" Pot **\$1.97** reg \$2.49



Utility Trailers

4'x8' Landscape or box style **\$929.99**



Miracle Grow Shake 'N' Feed

2kg **\$15.97** reg \$20.99



Cedar Mulch 2 ft

\$3.97
 Red Devil & Black Beauty Mulch 2 ft **\$4.97**

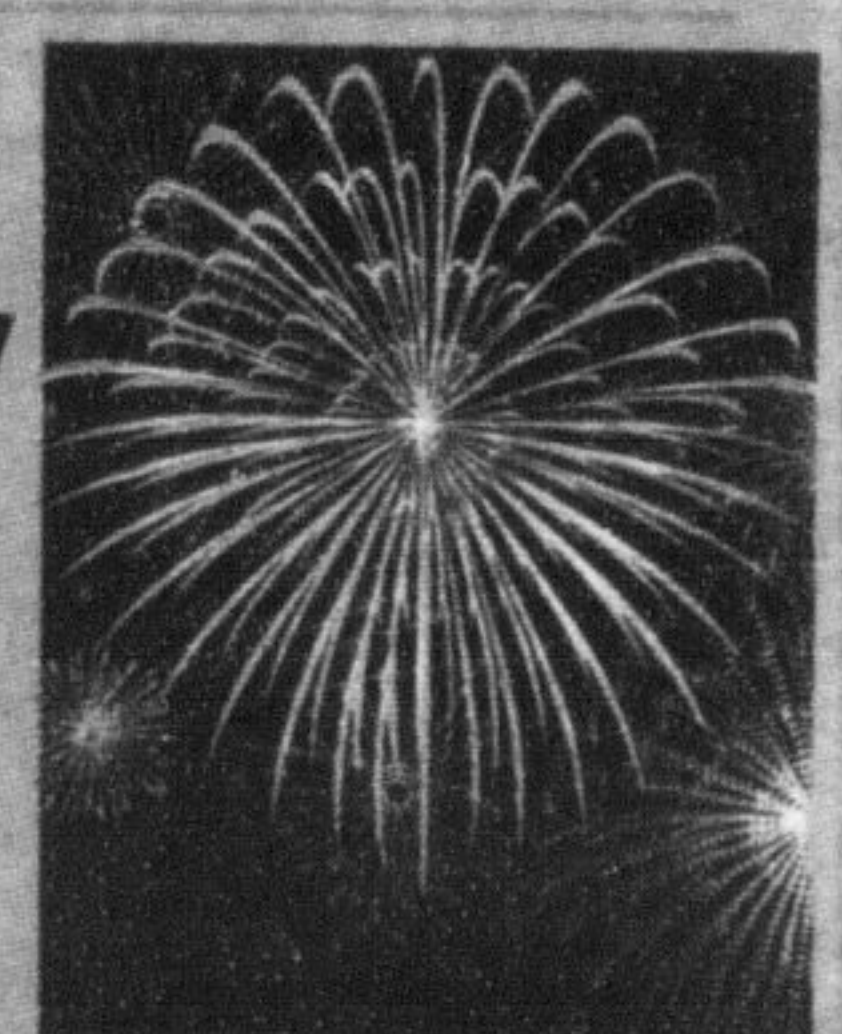


Spring Pansies & Pansy Planters

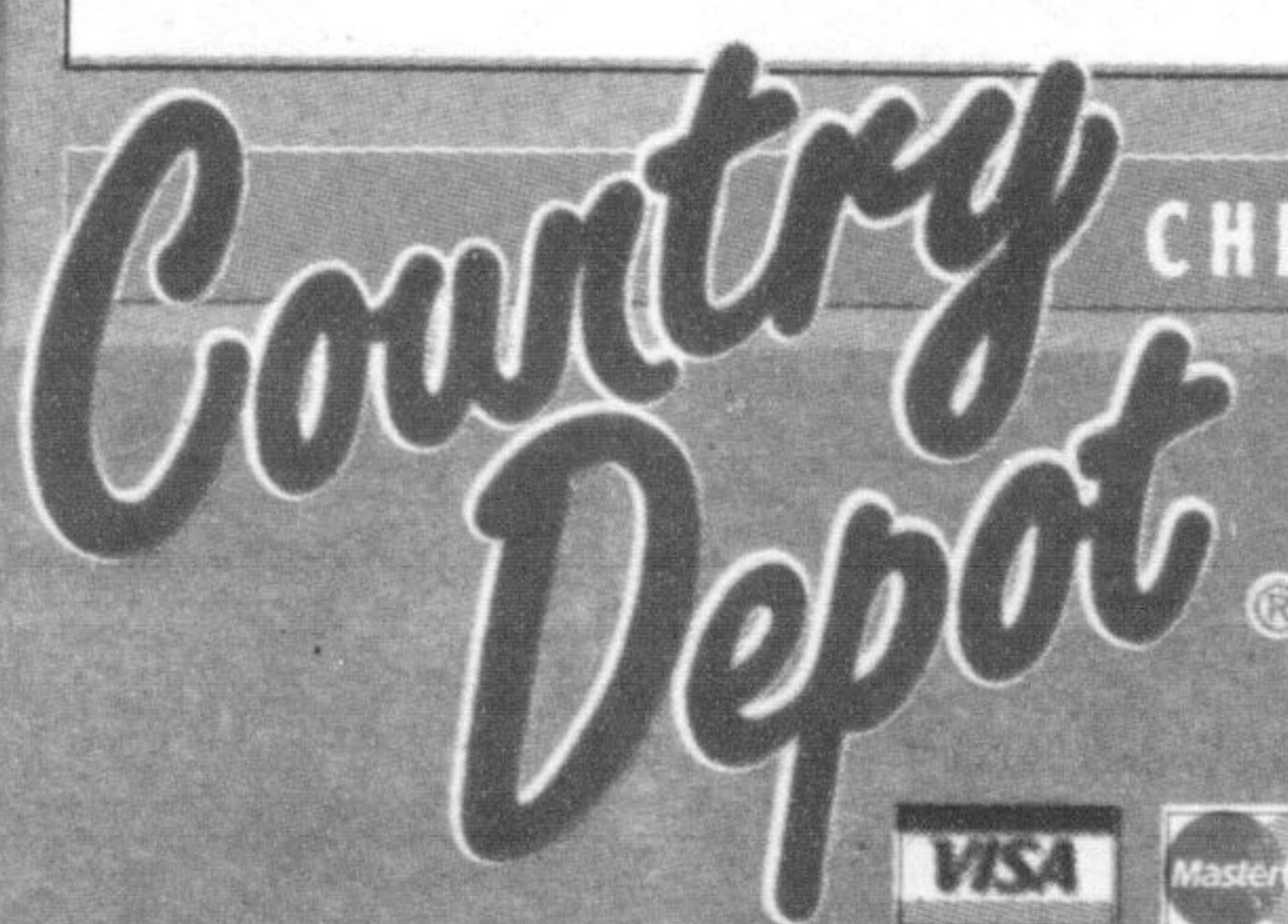
50% off



Fireworks Available Now for the Long Weekend



Vegetables, Annuals, Hanging Baskets, Perennials, Shrubs, Roses, Fruit Plants, Water Plants are all now in stock and ready for your garden! - Great Selection!

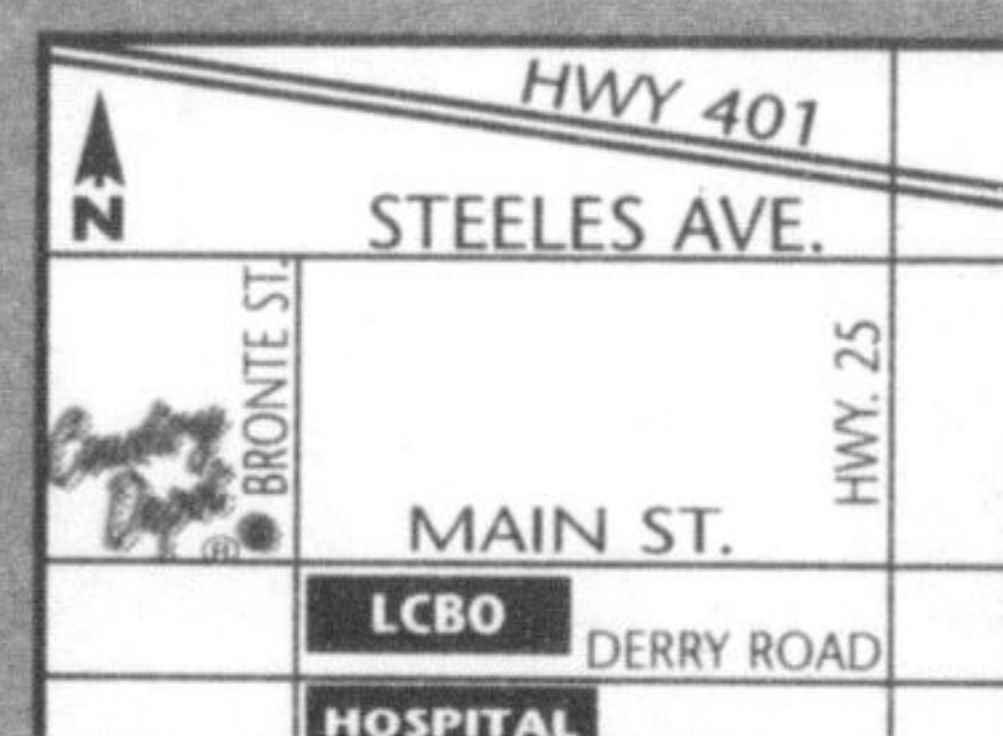


CHECK OUT OUR EXPANDED PET FOOD, GARDEN CENTRE & EQUINE SECTION!

Open Victoria Day Monday!
 11am - 4pm

MILTON Country Depot
 28 Bronte St. N.
 905-878-2391

Mon. - Thurs. 8am - 6pm,
 Fri. 8am-8pm • Sat 8am-5pm, Sun 11am-4pm



- Pet Food & Supplies
- Clothing, Footwear
- Bird Seed
- Lawn & Garden
- Giftware
- Farm Supplies
- Propane
- Equine Supplies

Sales End Monday May 22/06