

Crash results in impaired charges

A 61-year-old Erin woman faces charges in connection with an incident at James Snow Parkway and Steeles Avenue Saturday night.

At about 11:20 p.m. an off-duty police officer observed a Dodge CSX strike a concrete centre island. He notified police and upon investigation the driver was subsequently arrested and charged with impaired driving and having over the legal limit of alcohol in her blood.

She'll appear in Burlington court May 30.

Rental car stolen

A 2006 Hyundai Accent was taken from Discount Car and Truck Rental on Ontario Street overnight May 4.

Stolen from the rear parking lot, the vehicle is valued at \$18,000.

Windshield smashed

Roughly \$1,500 damage was caused to a 1998 Nissan MGS at Carriage Square's Shopper's

PoliceBlotter

Drug Mart last Friday.

The vehicle was parked at the rear of the Main Street plaza, and sometime between 5 and 11 p.m. unknown culprits put a wooden skid through its windshield.

The incident also left the hood severely dented and scratched.

Front doors destroyed

Unknown suspects smashed front doors at a residence and a dental centre May 6.

Roughly \$500 damage was caused when a glass door was destroyed at the Laurier Dental Centre on Laurier Avenue.

A motorist passing by noticed the damage at about 10 a.m. There was no sign of entry to the centre, and it's not known what was used to smash the glass.

Meanwhile, a Maple Avenue home had its front storm-glass

door shattered with a rock at about 9:25 p.m. — causing approximately \$300 damage.

Thieves target unlocked vehicles

Vehicles parked at Kingsway Place homes were targeted by thieves in two separate incidents overnight May 4.

In one case prescription sunglasses and 10 CDs — with a combined value of \$325 — were removed from a Chrysler Pacifica parked in the driveway. The vehicle was believed to have been unlocked.

Around the same time a \$60 garage door opener was stolen from a Chevy that was left unlocked in the driveway.

Fence damaged

Youths are believed to be responsible for vandalizing a front-yard fence on Abbott Street last Friday night.

The fence was damaged in three different places, with an estimated value of \$200.

LOOKING GOOD LANDSCAPING



Thank you Milton for the nomination for Milton Choice Award of Favourite Landscaper



- INTERLOCK
- LANDSCAPE DESIGN
- RETAINING WALLS & STEPS
- PATIOS & WALKS
- WATER FEATURES
- ARMOUR STONE
- LAWN MAINTENANCE
- BOBCAT SERVICE
- & MORE

905-330-1330

Crime Stoppers OF HALTON

Property stolen from vehicles in driveways

Halton Regional Police are investigating two thefts from cars.

Overnight May 4, thieves broke into two vehicles on Kingsway Place and stole \$380 worth of goods. Stolen items include a pair of prescription Oakley sunglasses, a garage door opener and various CDs.

There was no sign of forced entry to either vehicle.

If you have any information that leads to an arrest in this or any other matter, you may be eligible for a cash reward. You will never have to give your name or testify in court. Crime Stoppers of Halton doesn't subscribe to call display. Call 1-800-222-TIPS (1-800-222-8477) or check out Crime Stoppers' Web site at www.haltoncrimestoppers.com.

Relay For Life Canadian Cancer Society Société canadienne du cancer

CORRECTION NOTICE

The email address that ran in our May 5th ad in the Milton Canadian Champion was incorrect. For the Luminary Photos, the email address should have read:

kylemsmith@sympatico.ca

We apologize for the inconvenience this has caused.

Country Depot

Mulch

2 cu. ft. bags.

Cedar Bark 3⁹⁷ ea

367-1791

Red Devil

367-1797

Black Beauty Your Choice

367-1803

Cypress Gold 4⁹⁷ ea

367-1804



Triple Mix Soil

30 litres. Manure, peat and loam.

369-3151

Top Soil

30 litres.

369-3152

4 for 12⁰⁰

5 for 12⁰⁰

Moo Poo Cattle or Sheep Manure

Biologically composted, non-burning, easy to use. 100% natural. 18 kg.

367-1741/51

Aqua Bac Larvicide

Biological control of mosquito larvae in standing water.

500 g. 382-4220

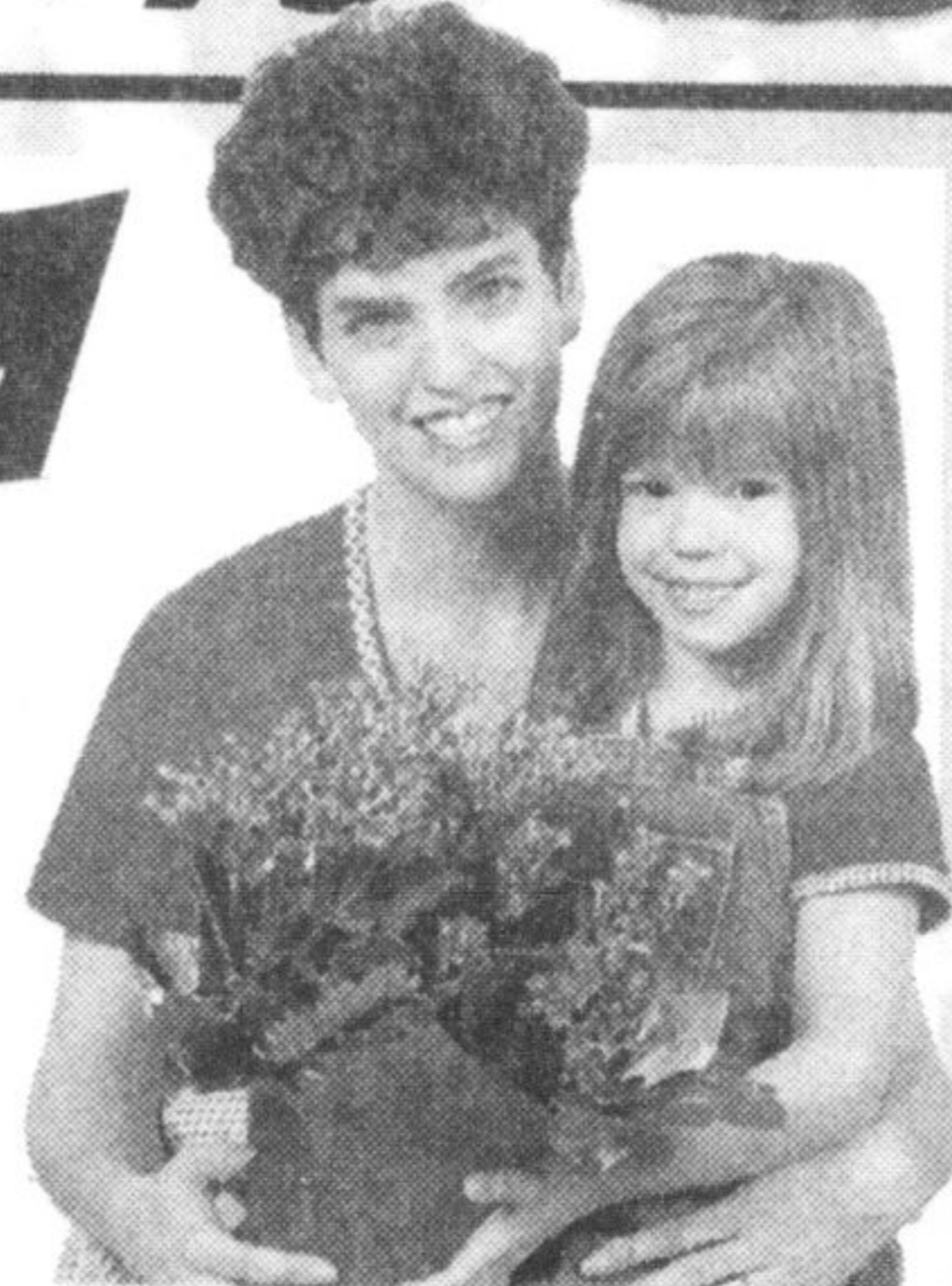
14⁹⁷

5 kg. 382-4221

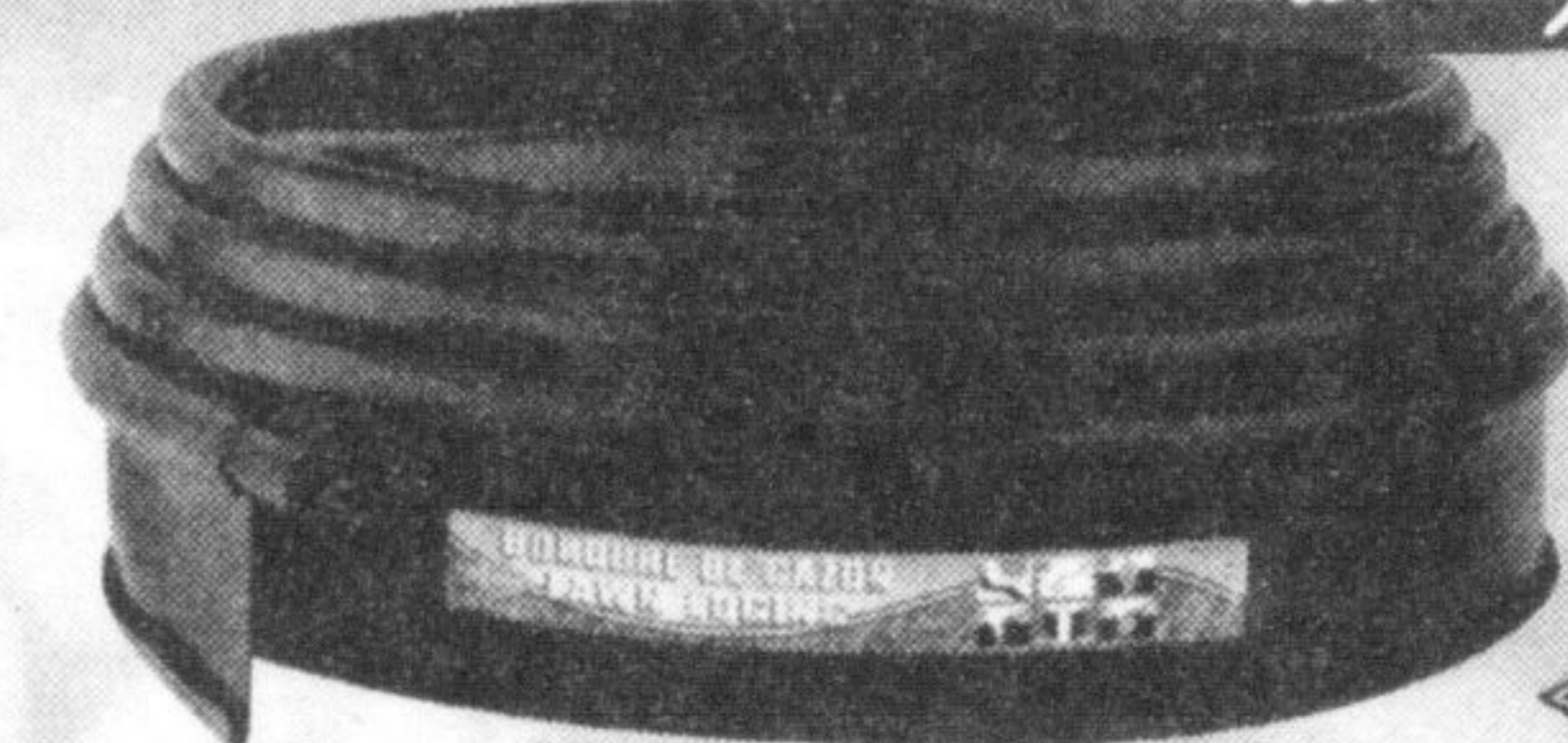
79⁹⁷ (Not shown)

Add beauty and delight to your yard

Mother's Day Planters
Deluxe Hanging Baskets
Flowering Shrubs
Hostas



Make your edges neat and tidy



Lawn Edging

4" x 20'. Professional grade.

368-3664

12⁹⁷



Shake 'n Feed Fertilizer

Dry plant food. 2.04 kg.

367-1537

15⁹⁷

Hanging Basket Fertilizer

350 g. 14-14-14.

Once a year.

367-1676

4⁷⁷



MILTON Country Depot Formerly Co-Op

28 Bronte St. N. (905) 878-2391

Monday - Thursday: 8-6 pm

Friday: 8-8 pm Saturday: 8-5 pm

Sunday: 11-4 pm

- Pet Food & Supplies
- Bird Seed
- Clothing, Footwear
- Lawn & Garden Giftware
- Propane
- Farm Supplies
- Equine Supplies

