

Dateline

BE A DESIGNATED DRIVER



Join the many people who agree not to drink alcoholic beverages...and to drive everyone in their group home safely.

• from DATELINE on page A12

VON Halton starts a 10-week hospice volunteer orientation session from 1 to 4 p.m. at the VON office, 2370 Speers Rd., in Oakville. For more information or to register, call (905) 827-8800, ext. 2312 or ext. 2313.

The Burlington Prostate Cancer Support Group, sponsored by the Canadian Cancer Society, meets at 7 p.m. at the unit office, 1251 Northside Rd., in Burlington. Family members and friends are welcome. For more information, call (905) 332-0060.

The Women's Centre, suite 210 in

Hopedale Mall at Rebecca Street and Third Line in Oakville, holds its free Peer Counselling by phone or in person for women facing abuse, grief/loss and relationship issues from 10 a.m. to 3 p.m. No appointment is necessary. Its Women's Caring and Sharing Circle is held from 1 to 3 p.m. And its Spanish Social Group for Spanish-speaking women takes place from 12:30 to 2:30 p.m. To register or for more information, call (905) 847-5520.

The Fine Arts Society of Milton's Evening Group of Artists meets from 7 to 10 p.m. The informal environment

provides artists with an opportunity to exercise their drawing skills. For more information, call Janis at (905) 854-5753.

Milton District Hospital holds a one-on-one breastfeeding clinic with a certified lactation consultant from 7 to 9 p.m. For more information or to make an appointment, call Jean Gallen at (905) 878-2383, ext. 7030.

The Deck youth centre, 200 Main St. (rear entrance), is open to high school students looking to play a game of pool from 7 to 10 p.m.

The Retired Women Teachers of

Ontario, Lydia Snow Branch, meets at Boston Presbyterian Church at 10 a.m. for its annual general meeting with lunch provided. New retirees are welcome. For more information, call Jo at (905) 877-2509.

The Milton Seniors' Activity Centre, 500 Childs Dr., holds its Thursday Afternoon Movie at 1:30 p.m. featuring Walk the Line. Bid-euchre and contract bridge take place at 1:30 p.m. The cost for each activity is \$2 for members and \$4 for non-members. A foot care clinic with a VON nurse is held by appointment only from 1 to 4 p.m. The cost is \$24. For more information, call (905) 875-1681.

Halton Showcase 2006, a resource fair for people with disabilities, takes place from 2 to 8 p.m. in the banquet room at Milton Sports Centre. Everyone's welcome.

AIDS Action Halton meets from 9:30 to 11:30 a.m. in the Nelson Room at Halton Region headquarters, 1151 Bronte Rd., to answer the question 'How can we best address HIV in our community?' For more information, call Marcus at 1-866-429-4242.

Friday April 28

Express the Arts meets from 7 to 9:30 p.m. at Milton Café on Ontario Street North, opposite Spokes 'n Slopes, featuring an open mic night with poetry, guitar and an art gallery.

The Deck youth centre, 200 Main St. (rear entrance), is open to high school students looking to play a game of pool from 7 to 11 p.m.

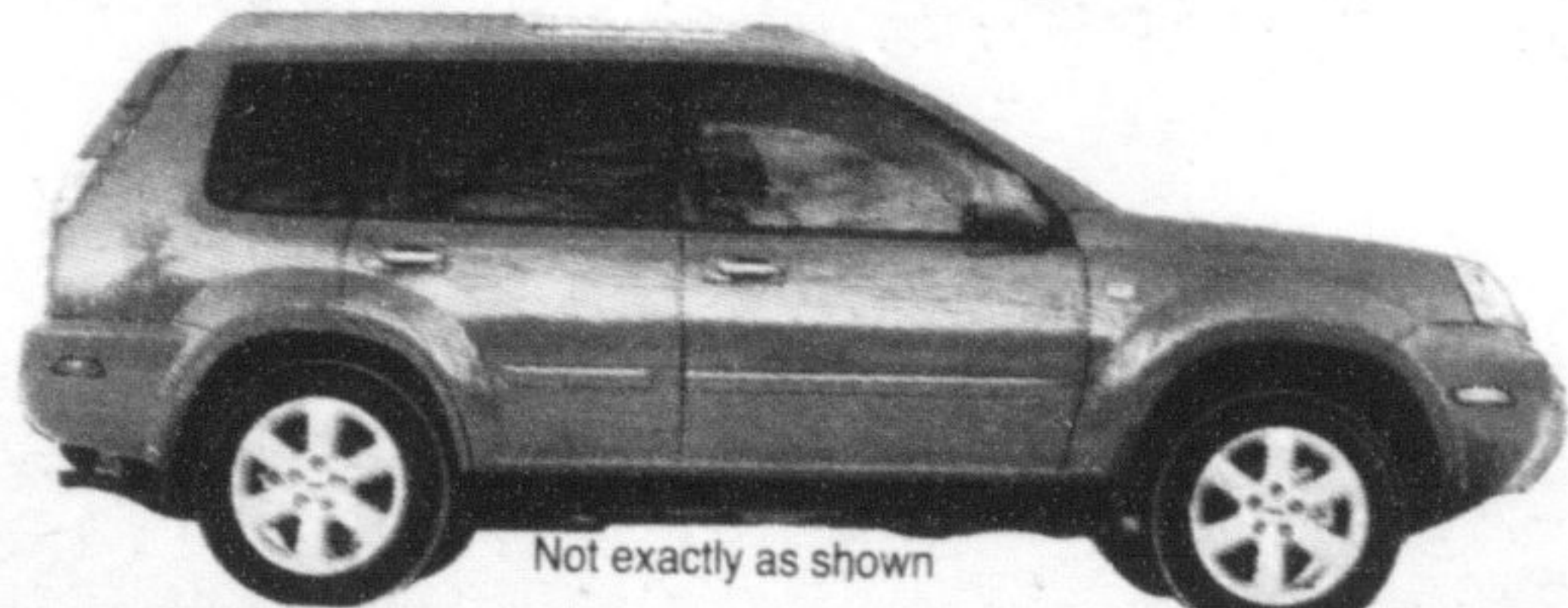
Milton District Hospital holds a group session breastfeeding clinic with a certified lactation consultant from 11 a.m. to 12:30 p.m. For more information or to make an appointment, call Jean Gallen at (905) 878-2383, ext. 7030.

Khi Youth Group is held from 6:45 to 8:45 p.m. at 100 Nipissing Rd., unit 3, for youths aged 9 to 13 years old. For more information, call (905) 875-1022.

The Milton Seniors' Activity Centre, 500 Childs Dr., holds contract bridge at 10 a.m. and CyberCafé from 1 to 3:30 p.m. for \$2 for members and \$4 for non-members. Euchre is held at 1:30 p.m. for \$2.50 for members and \$4.50 for non-members. Friday Night Movie featuring North Country starts at 7 p.m. The cost is \$2.50. Evening Euchre takes place at the Campbellville Lions Hall at 7:30 p.m. at a cost of \$2.50. For more information, call (905) 875-1681.

NORTH END NISSAN LET'S SEAL THE DEAL ON ALL IN-STOCK NISSAN'S

2006 X-TRAIL'S



Not exactly as shown

LEASE FOR
\$309 /MONTH*
FOR 60 MONTHS
\$5000 Down tax-incl.
- 3000 Cash back.
\$2000 Down (cash or trade)

BUY FOR
\$444 /MONTH*
FOR 72 MONTHS

1.8% FINANCING AVAILABLE

\$3000 CUSTOMER CASH (ON ALL X TRAIL)

- 2.5L, 16 Valve, DOHC Engine (165HP)
- 4 Wheel Disc Brakes • ABS • air conditioning
- power windows • power locks • AM/FM/CD
- cruise control • remote entry • power heated mirrors • tilt steering column • 6 way adjustable driver seat.

2006 ALTIMA'S



Not exactly as shown

LEASE FOR
\$299 /MONTH*
FOR 60 MONTHS
\$5000 Down tax-incl.
- 3000 Cash back.
\$2000 Down (cash or trade)

BUY FOR
\$435 /MONTH*
FOR 72 MONTHS

1.8% FINANCING AVAILABLE

\$3000 CUSTOMER CASH (ON ALL ALTIMA'S)

- 2.5L, 16 Valve, DOHC Engine (175HP) • 4 Wheel Disc Brakes • Mudguards (Front & Rear) • Auto On/Off Headlights • Heated Outside Mirrors (Colour Keyed) • 8 Way Manual Driver's Seat • 60/40 Split Rear Seat w/Lock • Variable Intermittent Wipers • Remote Fuel Lid Release • Power Trunk Release • Cruise Control • Tilt & Telescope Steering Column (Manual) • Power Heated Outside Mirrors • Power Door Locks • Power Windows W/Driver's Side Auto "Up/Down" • AM/FM/CD Audio System (100 Watt) • 6 Speakers • Immobilizer Key System • Automatic Transmission • ABS.

2006 QUEST S



Not exactly as shown

LEASE FOR
\$357 /MONTH*
FOR 60 MONTHS
\$5000 Down tax-incl.
- 2000 Cash back.
\$3000 Down (cash or trade)

BUY FOR
\$554 /MONTH*
FOR 72 MONTHS

1.8% FINANCING AVAILABLE

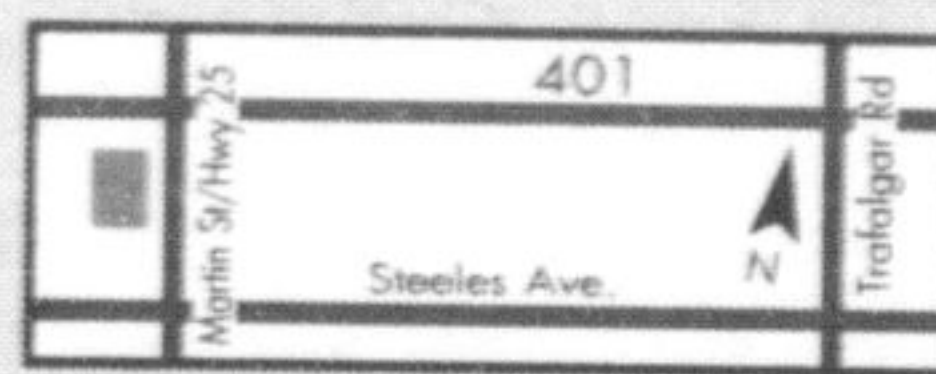
\$2000 CUSTOMER CASH (ON ALL QUEST)

- 3.5L V6 engine (240 HP), 242lb-ft torque • Traction Control System (TCS)
- Dual Sliding Doors • Variable Intermittent Wipers • 7 Passenger Seating System • Heated Front Seats • 3rd Row Fold_Away Bench Seat • Cup Holders (10) • Cruise Control • Air Conditioning (Front & Rear) • Power Windows, Front w/ Auto up/down • Power Door Locks • Power Heated Mirrors • Keyless Remote Entry • Roof Mounted Curtain Side-impact • Tire Pressure Monitoring System.

Milton's
NORTH END NISSAN LTD.

610 MARTIN STREET, MILTON
905-878-4137

SALES DEPT. HOURS:
Mon.-Thurs. 9:00 - 9:00
Fri. 9:00 - 6:00
Sat. 9:00 - 5:00



www.nissan.ca



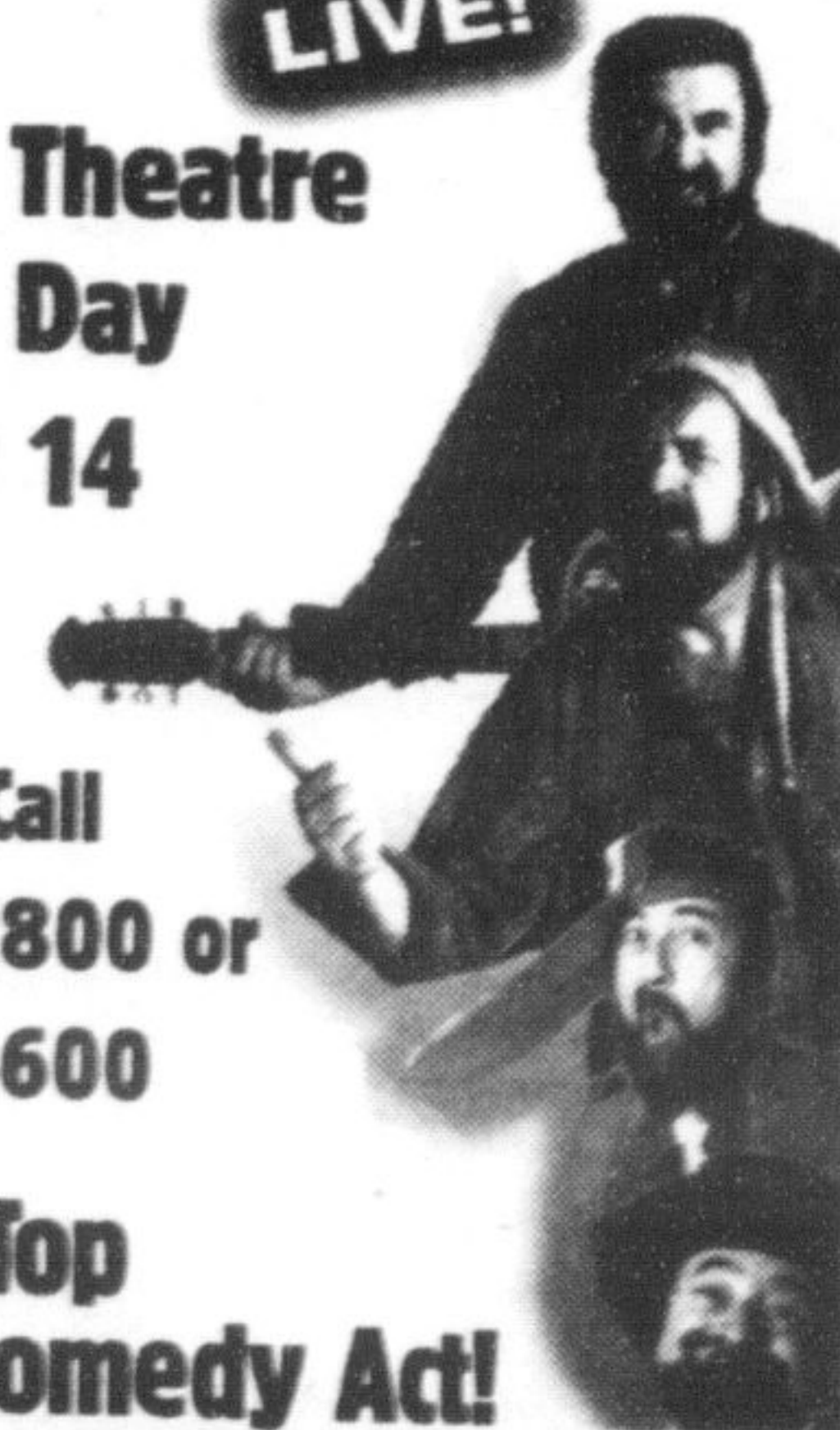
SHIFT

The Jimmy Flynn Show
LIVE!

Heritage Theatre
Mother's Day
Sun. May 14
8 pm

For Tickets Call
(905) 874-2800 or
(905) 793-4600

Canada's Top
Musical Comedy Act!



You'll never laugh this hard again!

*2006 Quest V6R76 AA00 60 mth lease, 24,000 km per year, 3.8% APR, \$11,857 optional residual, 72 mth buy @ 5.8%. 2006 Altima T4RG76 AE00 60 mth lease, 24,000 km per year, 5.8% APR, \$10,109 optional residual, 72 mth buy @ 5.8%. 2006 X-trail W6R676 AA00 60 mth lease 24,000 km per year, 5.8% APR, \$9,758 optional residual, 72 mth buy @ 5.8% APR. Excess km charge on all models is 10c per km over 96,000 km.