

Dateline

Dateline is a free listing of coming events only. The column is available to local community groups to assist in promoting their future events. Only charitable or non-profit community groups may use this service. We can only guarantee one issue of publicity closest to the date of the occurrence although more insertions are possible if demand is low.

Notices for Dateline should be handed in at the office of The Champion, 875 Main St. E., faxed to (905) 878-4943 or e-mailed to miltoned@haltonsearch.com. The final deadline is noon Friday for Tuesday's edition and noon Wednesday for Friday's edition. Dateline items aren't accepted by telephone.

Friday April 14

Ebenezer United Church, 12274 Guelph Line, holds its Good Friday cantata at 10 a.m. based on the Passion of St. John. Brunch follows the service. Tickets cost \$10 for adults and \$3 for kids aged three to 12. For more information, call Pastor Mark Rutledge at (905) 854-2423.

St. Paul's United Church, 123 Main St. E., holds a special Good Friday service featuring music by the St. Paul's Senior Choir, cellist Arlen Hlusko and the St. Paul's Chamber Ensemble and drama with the Phoenix Youth Theatre group. It starts at 10:30 a.m. Everyone's welcome.

The Milton Seniors' Activity Centre, 500 Childs Dr., holds contract bridge at 10 a.m. The cost is \$2 for members and \$4 for non-members. Its Cyber-Café takes place from 1 to 3:30 p.m. at a cost of \$2 for members and \$4 for non-members. Euchre is held at 1:30 p.m. The cost is \$2.50 for members and \$4.50 for non-members. Its Friday Night Movie starts at 7 p.m. featuring Just Like Heaven. The cost is \$2.50. And Evening Euchre takes place at the Campbellville Lions Hall at 7:30 p.m. at a cost of \$2.50. For more information, call (905) 875-1681.

Friday April 14 - 17

The Milton District Hospital gift shop holds its Easter Egg Hunt for Savings with all proceeds going to the hospital.

Saturday April 15

Evening euchre is held at 7:30 p.m. at the Hornby Co-operative Nursery School. Everyone's welcome.

The Women's Centre, suite 210 in Hopedale Mall at Rebecca Street and Third Line in Oakville, holds its free Peer Counselling by phone or in person for women facing abuse, grief/loss and relationship issues from 10 a.m. to noon. No appointment is necessary. To register or for more information, call (905) 847-5520.

Sunday April 16

Ebenezer United Church, 12274 Guelph Line, holds its Easter Sunday Service of Celebration at 11 a.m. Everyone's welcome. For more information, call Pastor Mark Rutledge at (905) 854-2423.

Monday April 17

Milton District Hospital holds a one-on-one breastfeeding clinic with a certified lactation consultant from 1:30 to 3 p.m. For more information or to make an appointment, call Jean Gallen at (905) 878-2383, ext. 7030.

The Women's Centre, suite 210 in Hopedale Mall at Rebecca Street and Third Line in Oakville, holds its free Peer Counselling by phone or in person for women facing abuse, grief/loss and relationship issues from 10 a.m. to 3 p.m. No appointment is necessary. To register or for more information, call (905) 847-5520.

Tuesday April 18

The Ontario Early Years Centre holds its Adult and Child Drop-in from

10:30 a.m. to noon at Milton Mall near the food court. Adults and kids up to six years old are invited to the informal playtime. For more information, call (905) 876-1244, ext. 22.

The Women's Centre, suite 210 in Hopedale Mall at Rebecca Street and Third Line in Oakville, holds its free Peer Counselling by phone or in person for women facing abuse, grief/loss and relationship issues from 10 a.m. to 3 p.m. No appointment is necessary. It

holds its free weekly Women's Employment Network from 9:30 to 11:30 a.m. To register or for more information, call (905) 847-5520.

Calling New Parents, a free program for parents and babies aged 6 months and younger, meets with a public health nurse to discuss parenting and infant care. The group meets at the Ontario Early Years Centre, 917 Nipissing Rd., from 1:30 to 3:30 p.m. • see more DATELINE on page B5

Q: Why did the chicken cross the road?



A: To live longer.

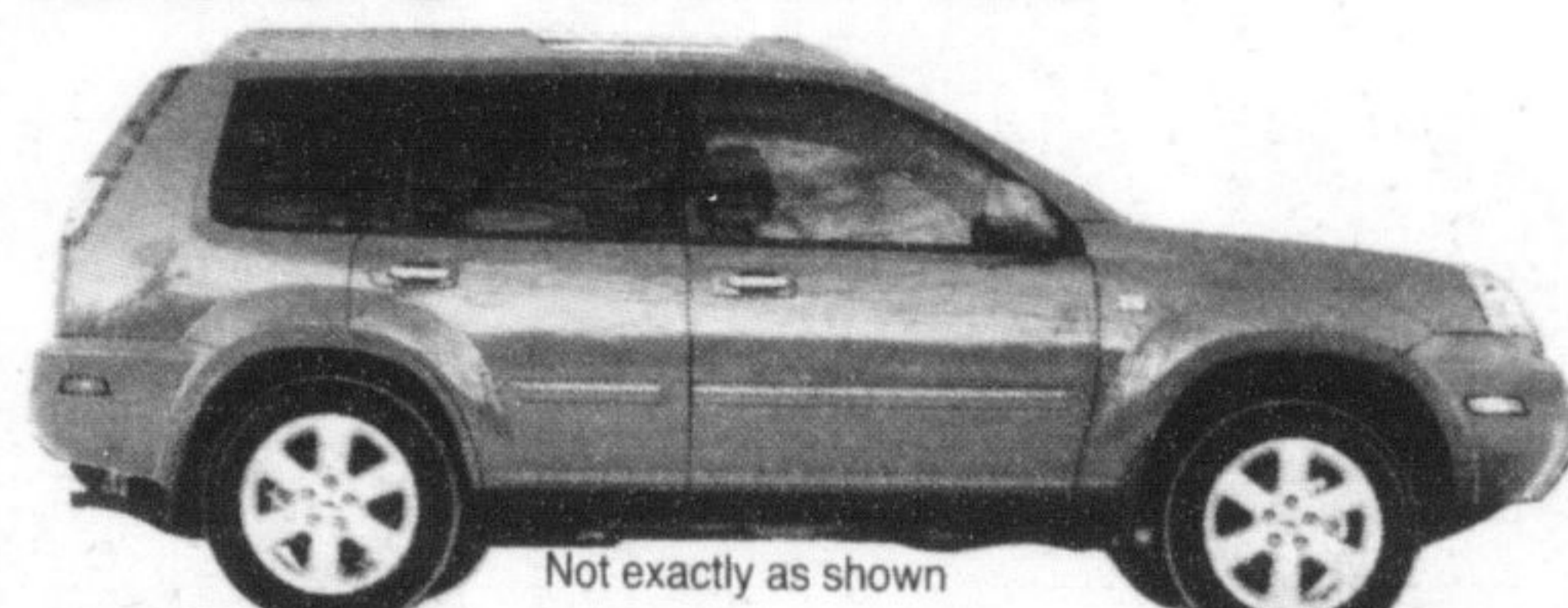
By walking across the road, the chicken gained a healthier heart and lungs... and a positive attitude.



NORTH END NISSAN

LET'S SEAL THE DEAL ON ALL IN-STOCK NISSAN'S

2006 X-TRAIL'S



Not exactly as shown

LEASE FOR **\$309** /MONTH FOR 60 MONTHS
\$5000 Down tax-incl.
- 3000 Cash back.
\$2000 Down (cash or trade)

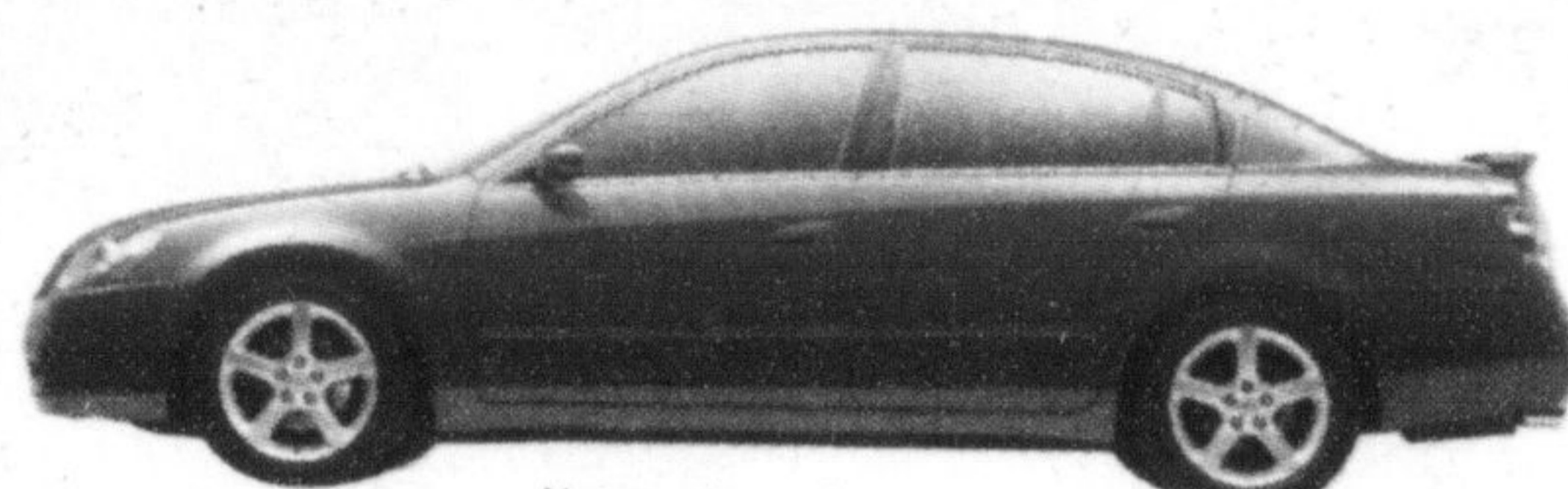
BUY FOR **\$444** /MONTH FOR 72 MONTHS

1.8% FINANCING AVAILABLE

\$3000 CUSTOMER CASH (ON ALL X TRAIL)

- 2.5L, 16 Valve, DOHC Engine (165HP)
- 4 Wheel Disc Brakes • ABS • air conditioning
- power windows • power locks • AM/FM/CD
- cruise control • remote entry • power heated mirrors • tilt steering column • 6 way adjustable driver seat.

2006 ALTIMA'S



Not exactly as shown

LEASE FOR **\$299** /MONTH FOR 60 MONTHS
\$5000 Down tax-incl.
- 3000 Cash back.
\$2000 Down (cash or trade)

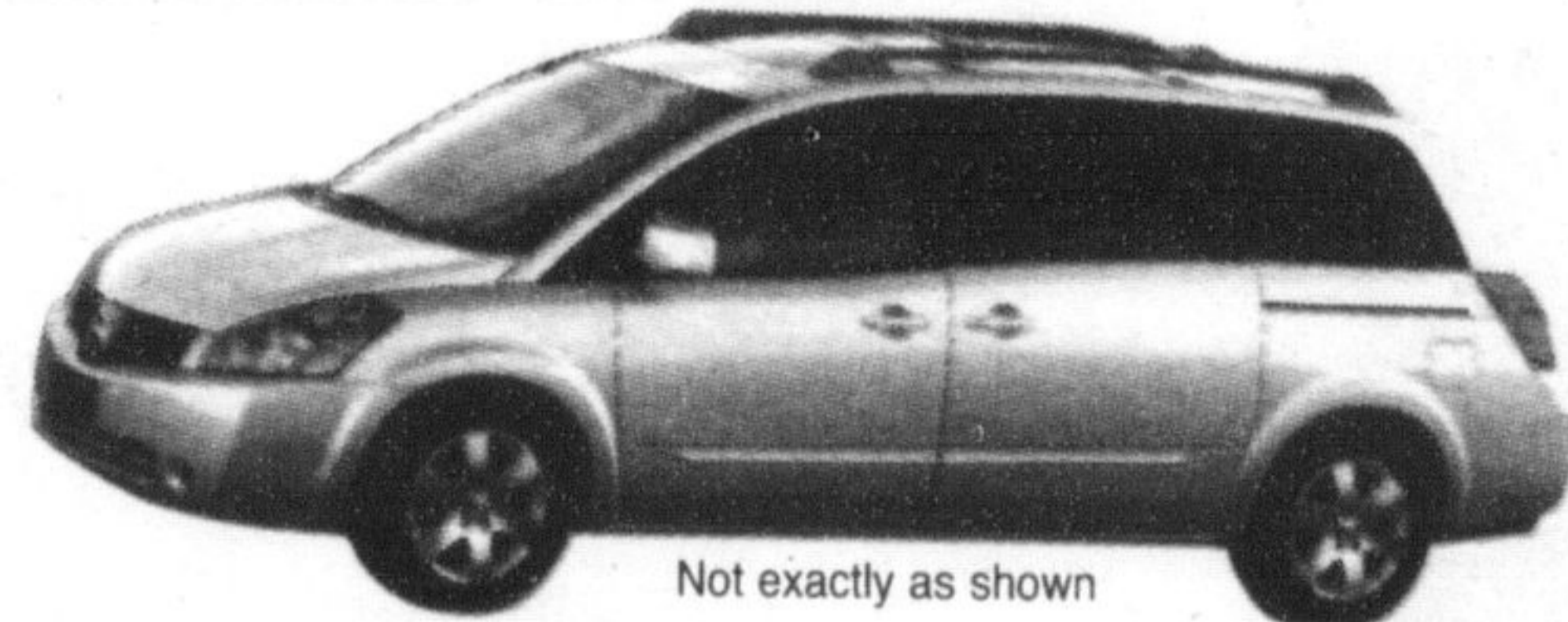
BUY FOR **\$435** /MONTH FOR 72 MONTHS

1.8% FINANCING AVAILABLE

\$3000 CUSTOMER CASH (ON ALL ALTIMA'S)

- 2.5L, 16 Valve, DOHC Engine (175HP) • 4 Wheel Disc Brakes • Mudguards (Front & Rear) • Auto On/Off Headlights • Heated Outside Mirrors (Colour Keyed) • 8 Way Manual Driver's Seat • 60/40 Split Rear Seat w/Lock • Variable Intermittent Wipers • Remote Fuel Lid Release • Power Trunk Release • Cruise Control • Tilt & Telescope Steering Column (Manual) • Power Heated Outside Mirrors • Power Door Locks • Power Windows w/Driver's Side Auto "Up/Down" • AM/FM/CD Audio System (100 Watt) • 6 Speakers • Immobilizer Key System • Automatic Transmission • ABS.

2006 QUEST S



Not exactly as shown

LEASE FOR **\$357** /MONTH FOR 60 MONTHS
\$5000 Down tax-incl.
- 2000 Cash back.
\$3000 Down (cash or trade)

BUY FOR **\$554** /MONTH FOR 72 MONTHS

1.8% FINANCING AVAILABLE

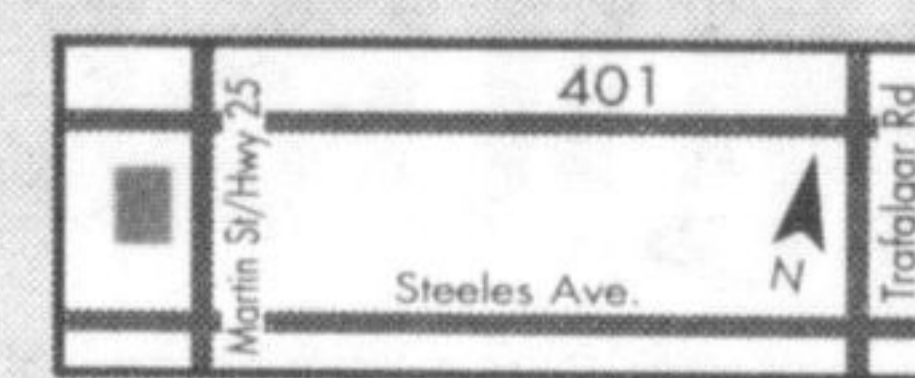
\$2000 CUSTOMER CASH (ON ALL QUEST)

- 3.5L V6 engine (240 HP), 242lb-ft torque • Traction Control System (TCS)
- Dual Sliding Doors • Variable Intermittent Wipers • 7 Passenger Seating System • Heated Front Seats • 3rd Row Fold_Away Bench Seat • Cup Holders (10) • Cruise Control • Air Conditioning (Front & Rear) • Power Windows, Front w/ Auto up/down • Power Door Locks • Power Heated Mirrors • Keyless Remote Entry • Roof Mounted Curtain Side-impact • Tire Pressure Monitoring System.

NORTH END NISSAN LTD.

610 MARTIN STREET, MILTON
 905-878-4137

SALES DEPT. HOURS:
 Mon.-Thurs. 9:00 - 9:00
 Fri. 9:00 - 6:00
 Sat. 9:00 - 5:00



www.nissan.ca



SHIFT

*2006 Quest V6R76 AA00 60 mth lease, 24,000 km per year, 3.8% APR, \$11,857 optional residual, 72 mth buy @ 5.8%. 2006 Altima T4R76 AE00 60 mth lease, 24,000 km per year, 5.8% APR, \$10,109 optional residual, 72 mth buy @ 5.8%. 2006 Xtrail W6R676 AA00 60 mth lease 24,000 km per year, 5.8% APR, \$9,758 optional residual, 72 mth buy @ 5.8% APR. Excess km charge on all models is 10c per km over 96,000 km.