

# Hunt No Further! Hunt

**WE ARE OPEN THIS EASTER SATURDAY!**




## ALL NEW 2007 DODGE CALIBER SXT

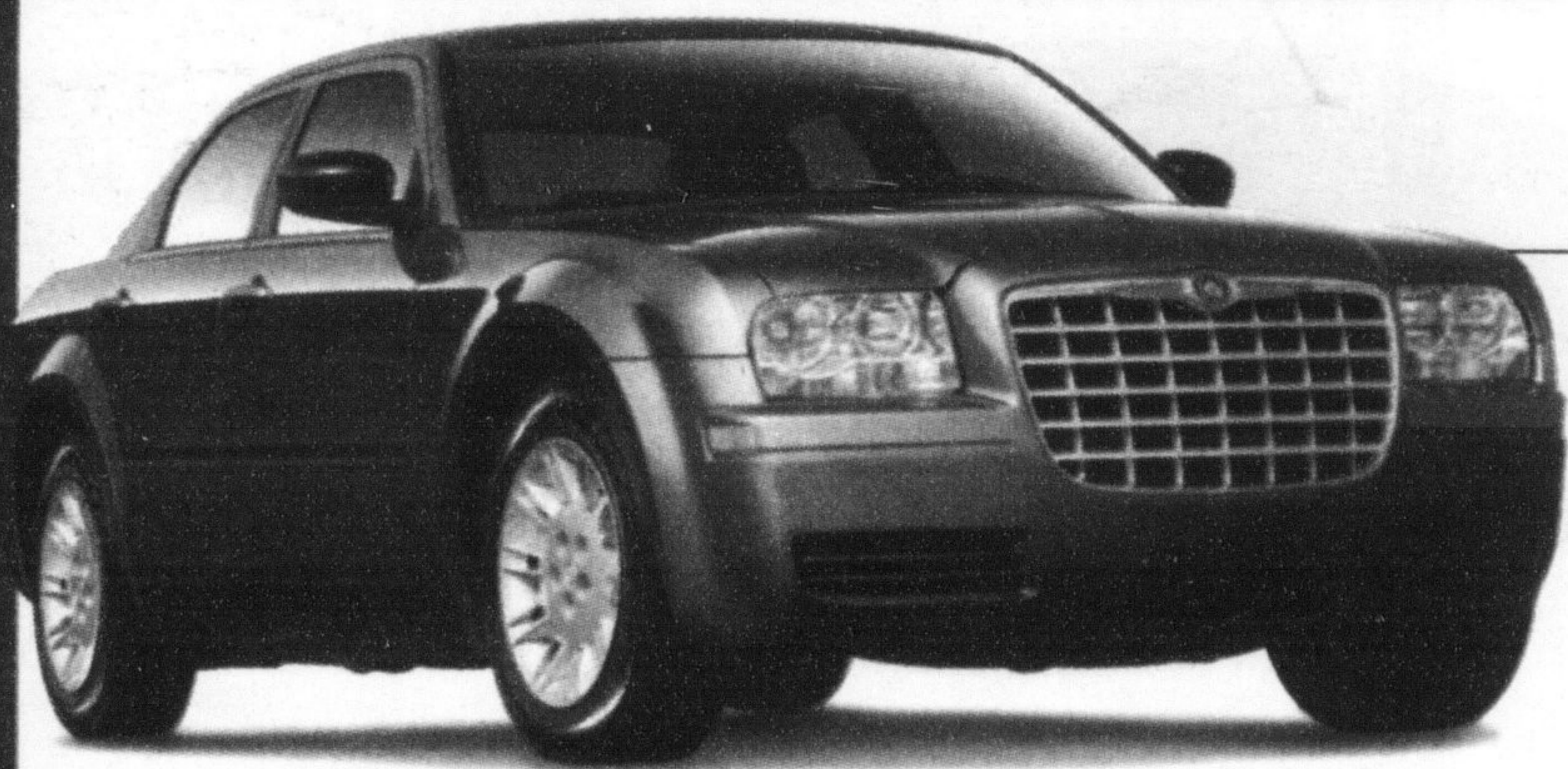
- 158 hp 2.0L DOHC WT 4 cylinder
- Continuously Variable Automatic Transmission
- Air conditioning • AM/FM/CD stereo with 4 speakers
- Illuminated Cupholders • Side-curtain airbags
- Remote keyless entry • ABS brakes
- Power windows, mirrors & locks



PURCHASE FOR  
**\$18,895\***

OR LEASE FOR **\$275 ‡** PER MONTHS FOR 39 MONTHS \$0 SECURITY DEPOSIT  
LEASE APR **4.8%**

**\$0 Down Payment!**



## 2006 CHRYSLER 300

★★★★★ NHTSA 5 STAR Front impact crash test rating

- 250 hp 3.5L High-Output V6 engine • 5-speed automatic transmission and Auto/Stick™
- AM/FM/CD stereo with 4 speakers • 4-wheel disk brakes with anti-lock and All-Speed Traction Control
- 4-wheel independent suspension • Air conditioning
- Rear-wheel drive with Electronic Stability Program (ESP) • Power locks, heated foldaway mirrors

OR LEASE FOR **\$349 ‡** PER MONTHS FOR 39 MONTHS WITH \$1,750 DOWN \$0 SECURITY DEPOSIT  
LEASE APR **0.8%**

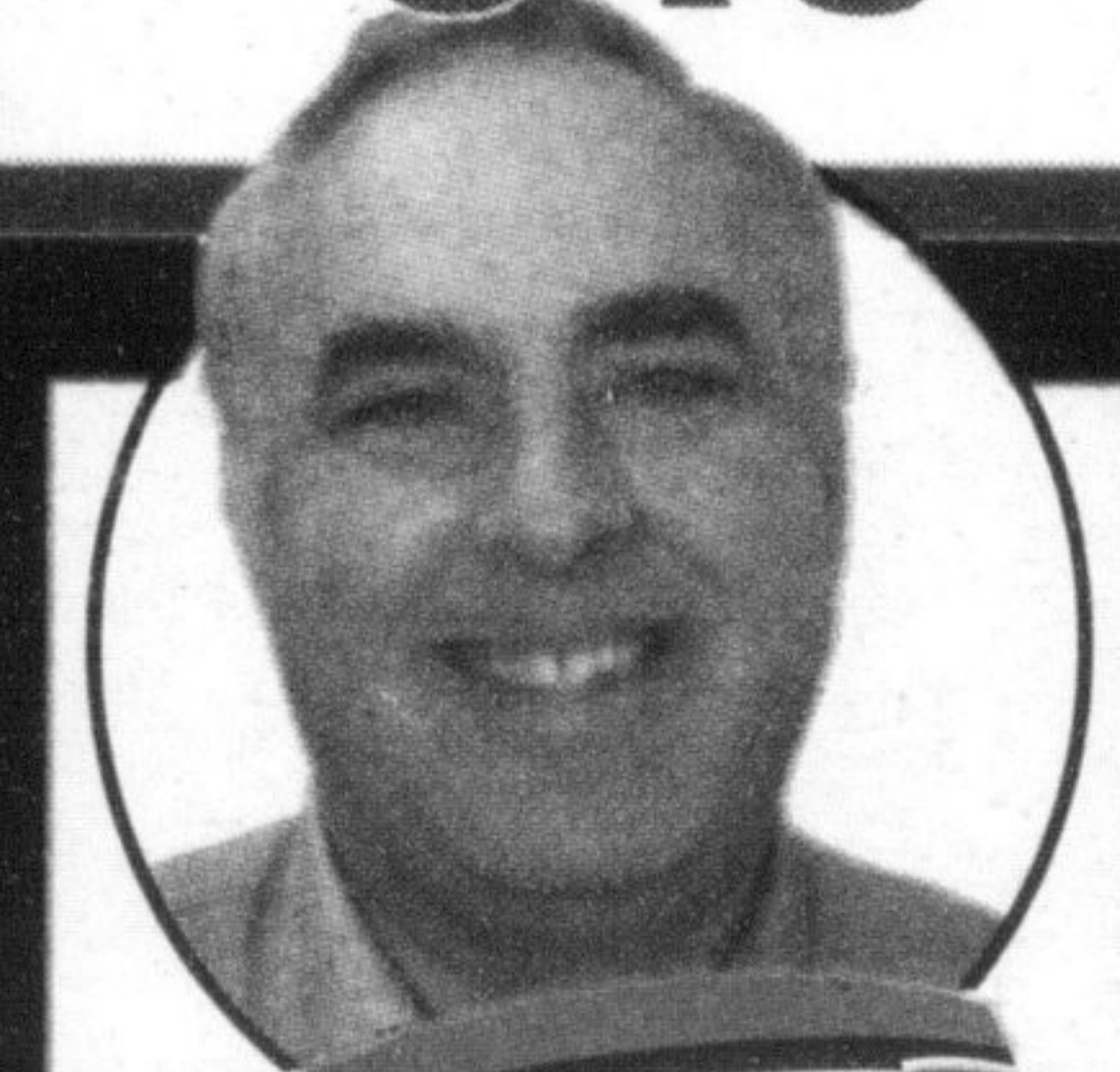
## 2006 DODGE CHARGER SE

★★★★★ NHTSA 5 STAR Front impact crash test rating

- 250 hp 3.5L High-Output V6 • 5-speed automatic transmission with Auto/Slick™
- AM/FM/CD stereo with 4 speakers
- 4-wheel disc brakes with anti-lock and Electronic Stability Program (ESP)



OR LEASE FOR **\$349 ‡** PER MONTHS FOR 39 MONTHS WITH \$1,750 DOWN \$0 SECURITY DEPOSIT  
LEASE APR **0.8%**



## \*\*\* GARY'S PRE-OWNED SPECIALS \*\*\*

**2005 CHRYSLER SEBRING CONVERTIBLE**



6 cyl. pw, pd, CD, alum wheels. Bal. of Fact. 5 yr or 100,000 warranty with only 13,000kms

**\$23,988\***

BALANCE OF FACTORY WARRANTY

**2005 DODGE DURANGO**




4.7L 8 cyl., leather, 7 pass, 30,000 kms. Former rental. Stk P3154

**\$25,888\***

BALANCE OF FACTORY WARRANTY

**2005 CHRYSLER 300**



6 cyl with p.moonroof, alum wheels, p.seat.

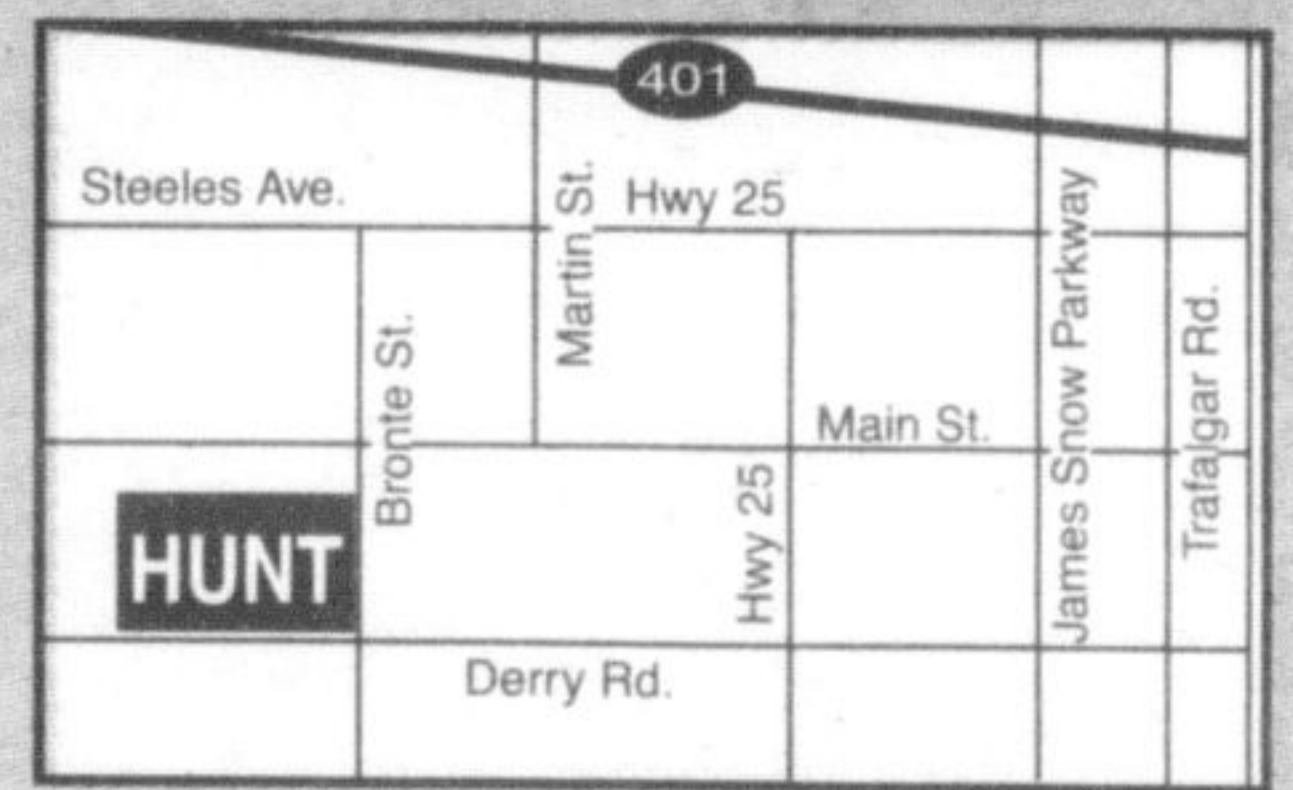
**\$22,888\***

BALANCE OF FACTORY WARRANTY

**Hunt Chrysler Jeep**  
Your **FIVE STAR** Dealership

**500 BRONTE ST. S.**

Milton: (905) 876-2580  
Toll Free: 1-866-848-8816  
Email: sales@huntchrysler.com



Wise customer read the fine print: \*, †, Limited time offers apply to retail deliveries only. Excludes freight (\$1,050 for Caliber, \$1,200 for 300 and Charger), license, insurance, registration, \$50 PPSA, any retailer administration fees and applicable taxes. Retailer order/trade may be necessary. Leasing is subject to approval by Chrysler Financial. See retailer for specific pricing details and conditions. Retailers are free to set individual prices. \* (Purchase price applies only to 2007 Caliber SXT (24D) Models †Leases based on 39 month terms for either 2006 300 (27H) or Charger (27E); total lease obligation is \$15,361 @0.8% lease APR with \$1,750 down payment and 2007 Caliber SXT (24D) total lease obligation is \$10,725 @4.8% lease APR with \$0 down. Freight (\$1,050 for Caliber, \$1,200 for 300 and Charger), first month's payment, down payment (except Caliber), any retailer administration fees and \$50 PPSA are due at lease inception. Kilometres limited to 66,300 for 39 months terms; charge of \$0.15/km for excess kilometres based on U.S. National Highway Traffic Safety Administration (NHTSA) mileage system for 2006 model year Dodge Charger and Chrysler 300. Auto/Stick is a trademark of DaimlerChrysler Corporation. Admin fee, PST, GST, lic fee extra. †† Dealer's payment for 90 days. Borrowing \$20,000 @ 7.5% interest charge \$5,250.00 for total \$25,250.00 for 72 month term payment is \$350.00.000. †† Admin fee, PST, GST, lic fee extra.

FINANCING PROVIDED BY  
**Chrysler Financial**