

Weekend SPOTLIGHT -on homes-



Ryan CRANE
Sales Representative

Marketing Your Home
For All Its Worth!

(609) **827-3434**

RE/MAX
REALTY SPECIALISTS INC.



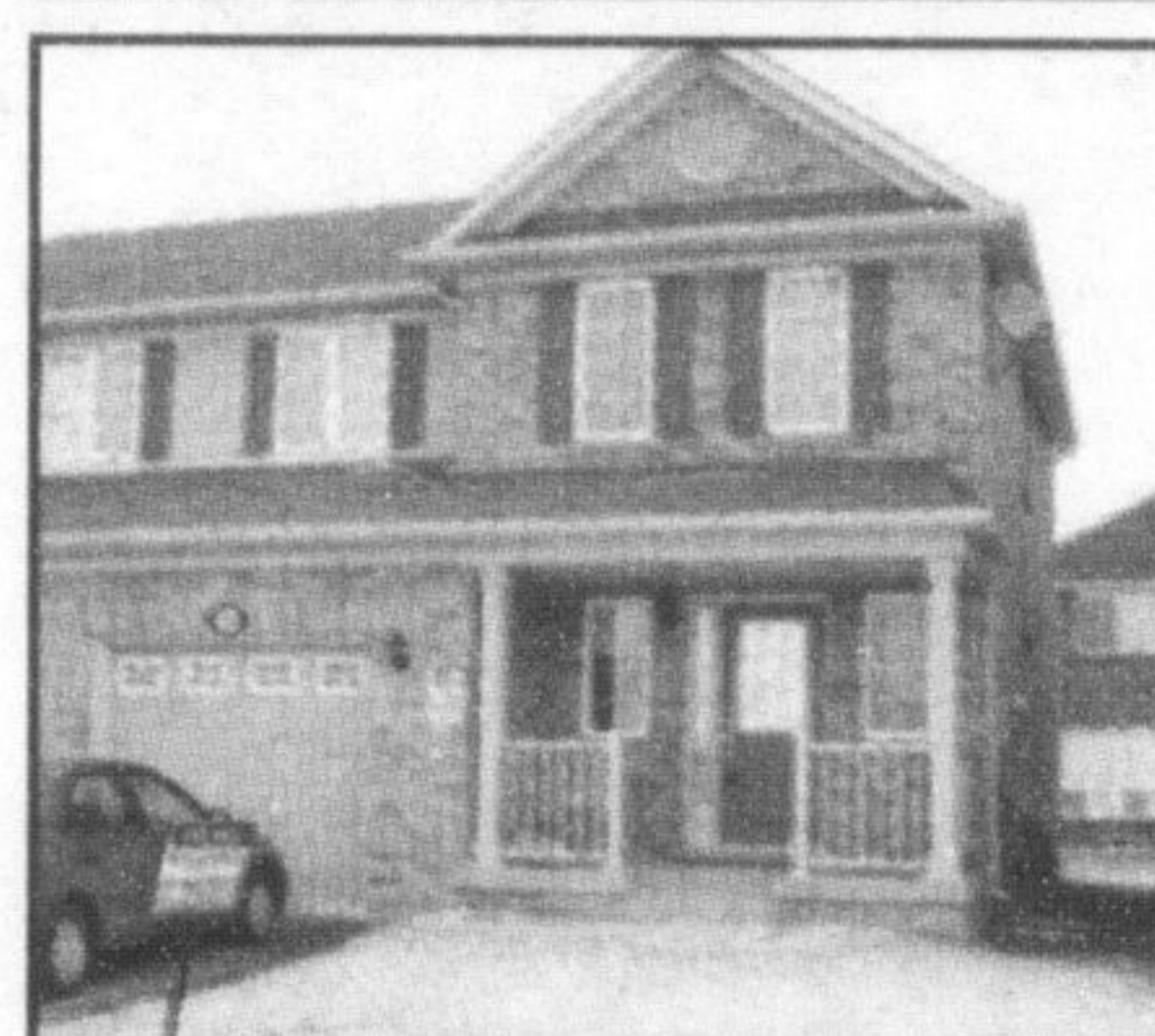
\$384,800

MAIN STREET VILLAGE

2300 Sq.ft. home on a premium lot that fronts onto a park. Big Eat-in-Kitchen with upgraded cabinets and breakfast bar. Interlocking front steps, plus walkway & a patio in the fully fenced backyard. Gas fireplace in family room. Master ensuite with sep. tub and shower. Main floor laundry with garage access.

OPEN HOUSE SAT. 1-4PM
126 DIXON DRIVE
Main/Thompson

the fully fenced backyard. Gas fireplace in family room. Master ensuite with sep. tub and shower. Main floor laundry with garage access.



\$274,900

GORGEOUS "MATTAMY" SEMI WITH MANY UPGRADES

This 3 bedroom home is located in the heart of Milton. It features a fantastic open concept layout with a large living/dining room. The Eat-in-Kitchen has ceramic floors and a walk-out to the back yard. Master bedroom with a walk-in closet and 4 pc ensuite bath. Upgraded oversized windows in the Basement.



\$434,800

STUNNING 2400 SQ.FT. HOME

...Situating on a pool size lot and just steps to parkette and new school. Very spacious and open layout. Upgraded Kitchen with backsplash and centre island is open to the family room with gas fireplace. 4 good size bedrooms. Master bedroom with 5 pc ensuite bath.

NEW LISTING



\$212,500

END UNIT - CHILDS DRIVE

Updated 3 bedroom condo townhouse in excellent condition. Spacious layout with separate dining room. Updates in last year include furnace, A/C, windows, bathrooms, ceramic flooring, kitchen appliances, paint. Compare to freehold - more space for less money. Call for a personal viewing. \$212,500.

ROYAL LEPAGE MEADOWTOWNE REALTY
Alan McDonald, Broker, 905-878-8101



ROYAL LEPAGE
Meadowtowne Realty, Broker
INDEPENDENTLY OWNED AND OPERATED



\$789,000

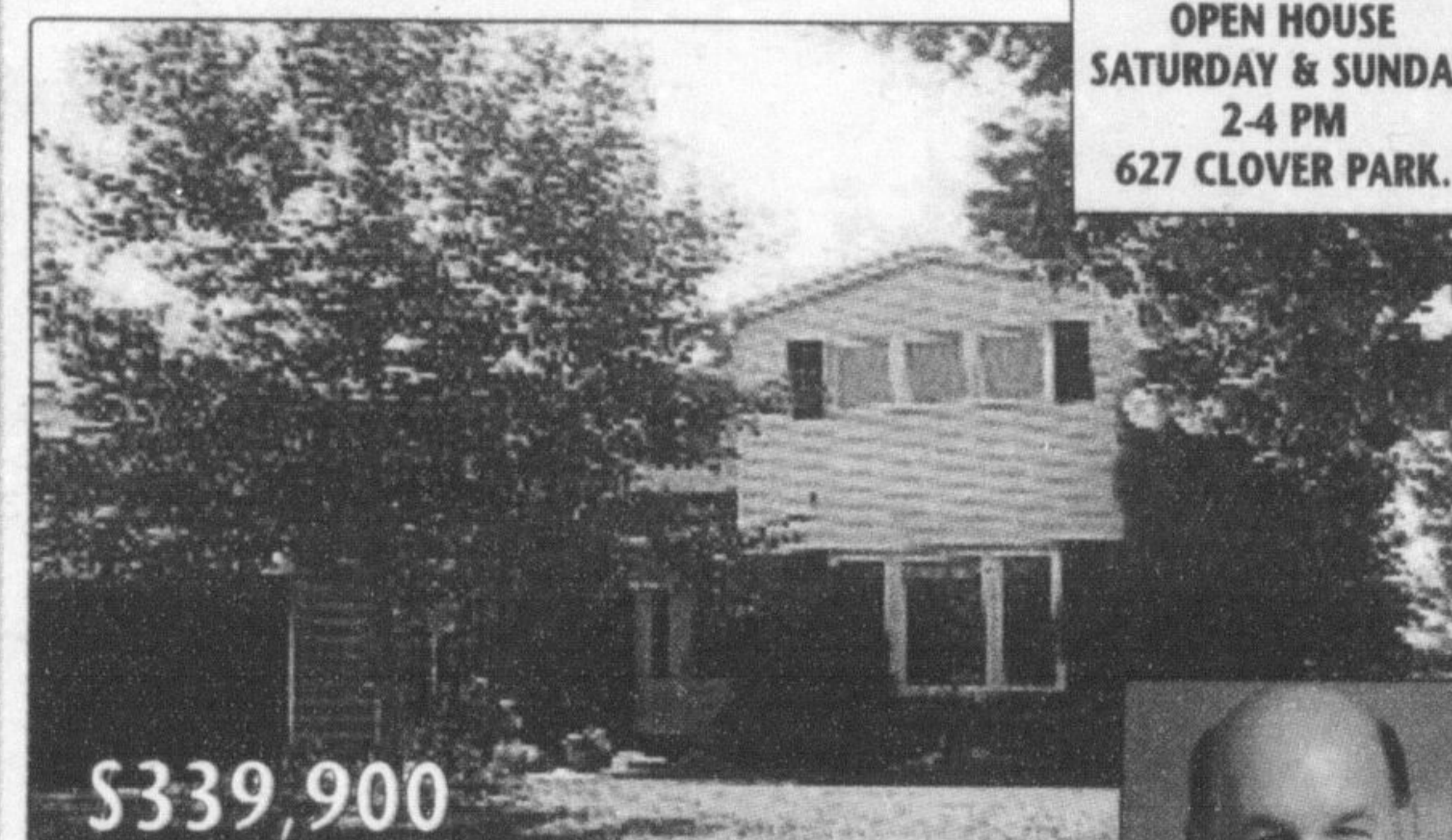
OPEN HOUSE SUNDAY MARCH 25 2:00-4:00
3186 FIFTEEN SIDE RD.
JUST E OF GUELPH LN.

10+ ACRES-YOUR OWN PRIVATE PARK just 3 mins N of 401/Campbellville. Pond, manicured grounds, woods. Set back from rd @ end of long winding lane-NO VISIBLE NEIGHBOURS! Maple/porcelain flrs t/out! Wndws rplcd. Spacious designer kit w/ centre isld & grmns eating area. Fam rm w/ firepl/wdstv & patio drs to 4-season sunrm w/ w/out. WOW!

ROYAL LEPAGE MEADOWTOWNE REALTY
Joseph Brazeau, Sales Rep. 905-878-8101



ROYAL LEPAGE
Meadowtowne Realty, Broker
INDEPENDENTLY OWNED AND OPERATED

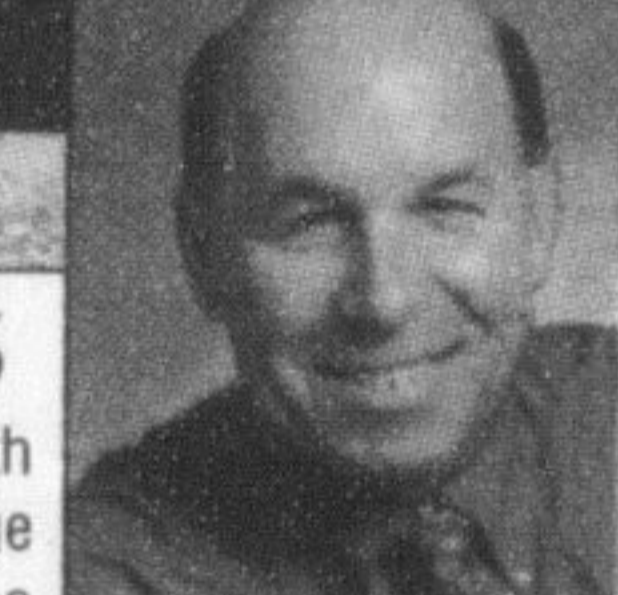


\$339,900

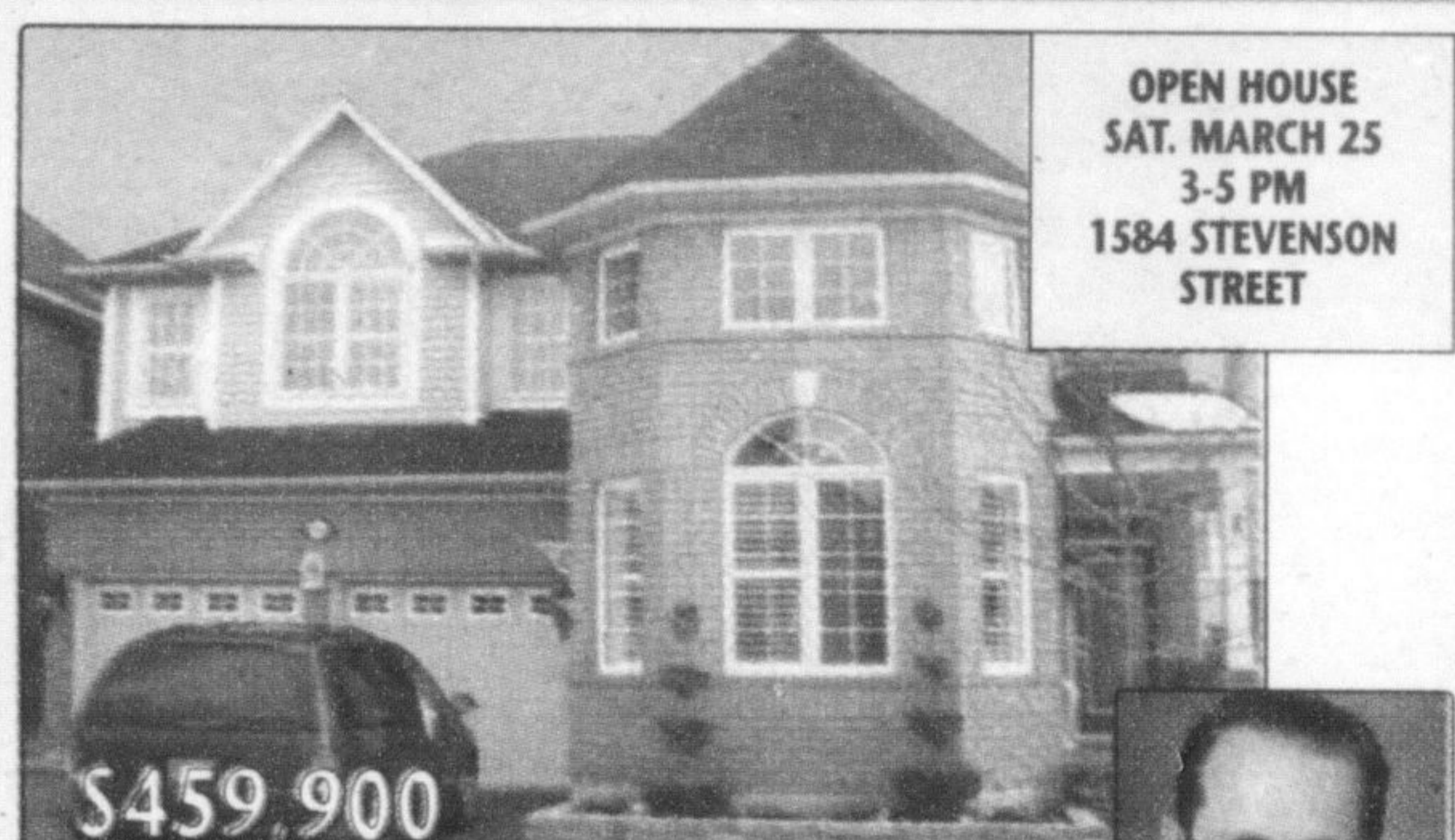
OPEN HOUSE SATURDAY & SUNDAY 2-4 PM
627 CLOVER PARK.

FABULOUS ESCARPMENT VIEWS
Beautiful family home in Bronte Meadows. Freshly decorated with most major ticket items done. Four spacious bedrooms, large kitchen eating area, main floor laundry and family room with gas fireplace, 2 1/2 baths, dbl garage, large 50'x100' lot on a quiet crescent. Priced to sell at \$339,900

ROYAL LEPAGE MEADOWTOWNE REALTY
Bob Stoutley, Sales Rep. 905-878-8101



ROYAL LEPAGE
Meadowtowne Realty, Broker
INDEPENDENTLY OWNED AND OPERATED



\$459,900

OPEN HOUSE SAT. MARCH 25 3-5 PM
1584 STEVENSON STREET

REDONE TOP TO BOTTOM

Hardwood, Upgraded Kit, Reno'd Baths, Ceramic Flrs & Backsplash, Potlights, 9 Ft Ceiling, Stone Tile Walkway, Landscaped, Fish Pond w/ Koi, The List Is Extensive. This is A Must See Home For The Most Discriminating Buyers. Unlike Any Other Stonechurch. MLS W832250.

RE/MAX PERFORMANCE REALTY INC.
Chris Barnetteam, Sales Rep. 905-875-3343, 905-270-2000



RE/MAX
PERFORMANCE REALTY INC.



\$342,900

OPEN HOUSE SAT. & SUN. 2-4PM
1670 CLARK BLVD

POPULAR POWELL MODEL BY MATTAMY
Immaculate, open concept with lots of upgrades. Located in a quiet neighbourhood. It boasts 3 bedroom with sizeable master and upgraded ensuite, computer nook - large kitchen w/ eat-in area, followed by the family room & living & dining room - access to garage. Shows a 10+. Closing July 5, 2006. A must see!

ROYAL LEPAGE MEADOWTOWNE REALTY
Sam Levin, Sales Rep. 905-878-8101



ROYAL LEPAGE
Meadowtowne Realty, Broker
INDEPENDENTLY OWNED AND OPERATED



\$544,900

Come see this GEM!

1415 Crozier Cres. Absolutely gorgeous 5 bedroom family home. Approx. 3715 sq.ft. Mattamy built! Upgrades galore! Bright, spacious and spotless! Open concept main floor family room w/gas fireplace, formal dining room w/coffered ceilings. Cozy main floor den, 5pc master bath features glass shower enclosure & Jacuzzi. Desirable Hawthorne Village location, close to schools, transportation. Located on a quiet crescent. A definite must see!

HOME@EASE REALTY INC.
416-222-HOME(4663) www.HomeAtEase.ca

HOME@EASE
www.HomeAtEase.ca



\$279,900

OPEN HOUSE SAT & SUN. 2PM - 5PM
307 PETTIGREW TRAIL.

NEW PRICE

307 PETTIGREW TRAIL

Beautiful 1600 Sq. Ft Semi just 3 years new. Greenpark Quality Built. Family Size Kitchen with Large Eat-in area and Sliding Door walk-out to yard. Impressive master bedroom with 4pc ensuite & soaker tub.

SUTTON GROUP REALTY SYSTEMS INC.
Milli Drapic, Sales Rep. 905-896-3333 or 416-825-6960



Sutton
GROUP

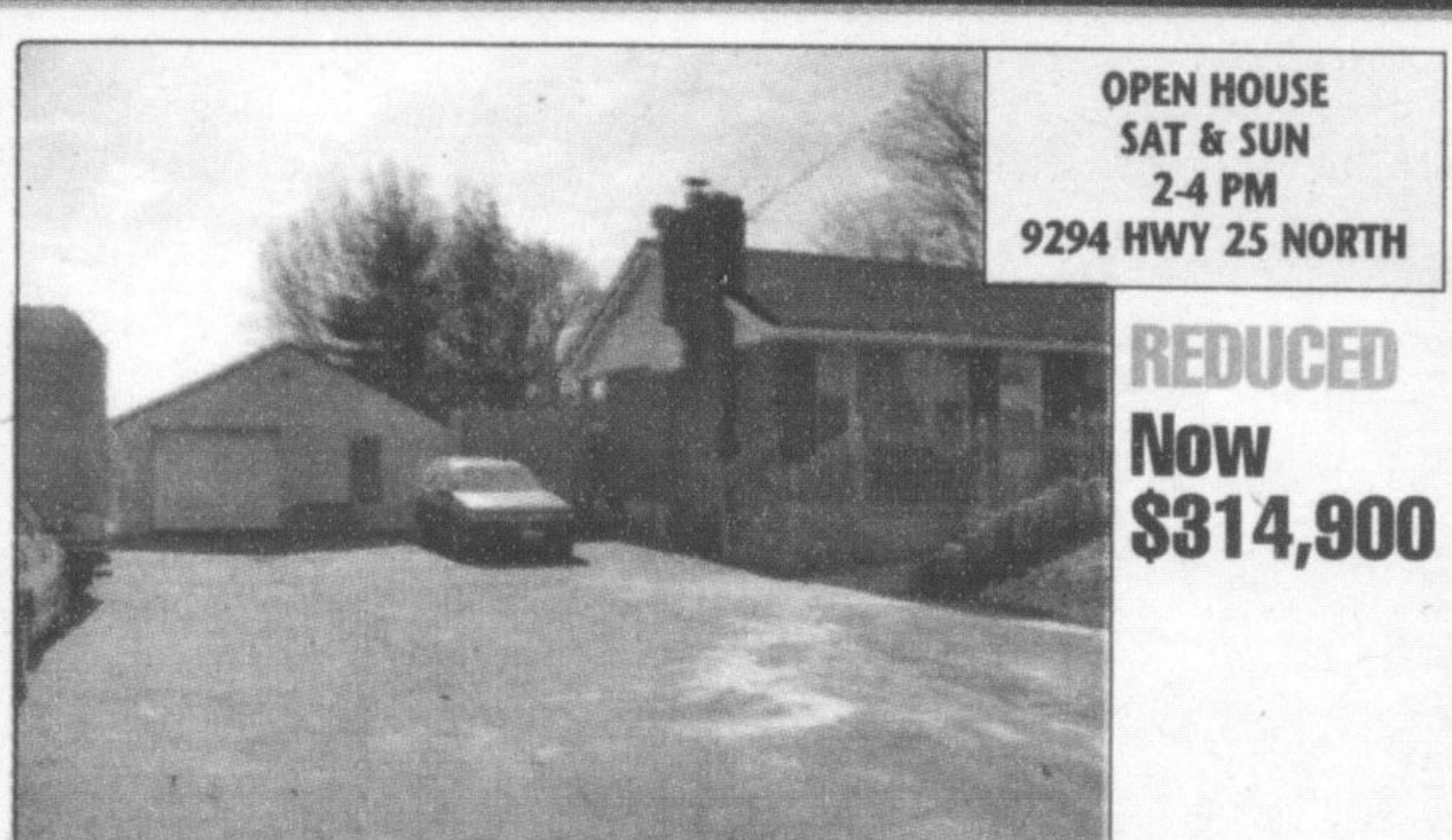


IMMACULATE 3 BEDROOM 2 STOREY SEMI

located in Main Street Village. Close to Public and Catholic schools, parks, leisure centre and hiking trails. Features ceramic tile floors, open concept floor plan, private ensuite with soaker tub and separate shower. Walkout from kitchen to fully fenced rear yard with patio. Freshly painted. Shows like new. A must see. remax@tsalvatore.com

Frank Salvatore, Assoc. Broker 905-575-5478
RE/MAX ESCARPMENT REALTY INC., Realtor
550 Fennell Ave. E., #221, Hamilton

RE/MAX
ESCARPMENT REALTY INC.



OPEN HOUSE SAT & SUN 2-4 PM
9294 HWY 25 NORTH

REDUCED Now \$314,900

9294 HIGHWAY 25 NORTH, MILTON

(Hwy 401 & Hwy 25). Country living on a 1/2 acre lot with a view of the Escarpment 3+1 bdrm brick Bungalow, 2 baths, Solarium, finished rec. room with wood burning fireplace and walkout. Mins to Downtown Milton and 401/407, 22X40 ft. Workshop combined with garage for the Hobbyist! \$314,900.

REALTYSELLERS™ (ONTARIO) LIMITED
John Dwight Percy, Sales Rep. 905-845-6669 cell: 905-691-5816

Realtysellers