

1 Week! ONLY 2 WEEKS TO DEAL

Hunt Chrysler Jeep

THE CHRYSLER GROUP IS ON A ROLL.... SALE ENDS MARCH 31ST



ALL NEW 2007 DODGE CALIBER SXT

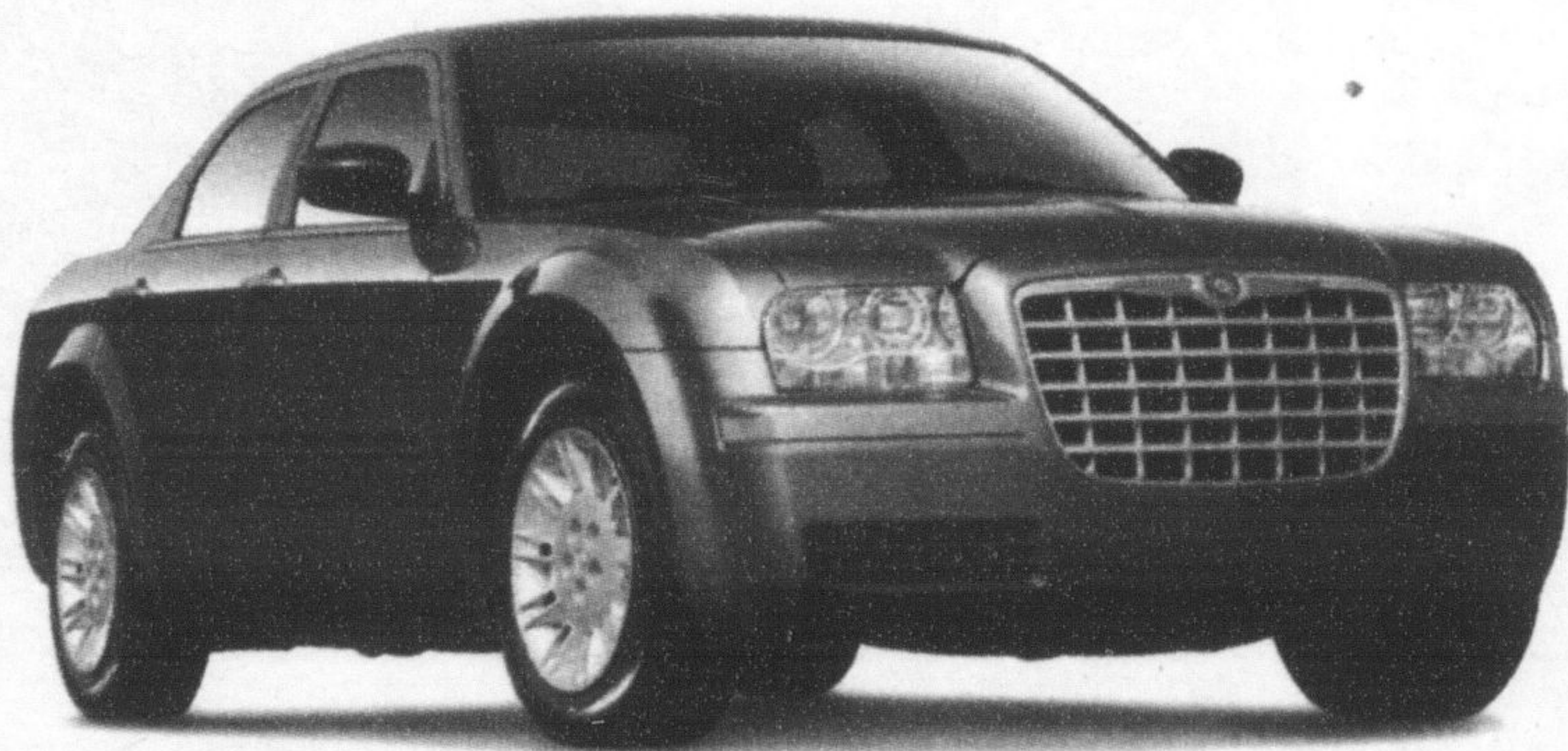
- 158 hp 2.0L DOHC WT 4 cylinder
- Continuously Variable Automatic Transmission
- AM/FM/CD stereo with 4 speakers
- Illuminated Cupholders and IP Cooler
- Side-curtain airbags • Air conditioning
- Remote keyless entry • ABS brakes
- Power windows, mirrors & locks

PURCHASE FOR
\$18,895*

OR LEASE FOR
\$275 ‡ PER MONTH FOR 39 MONTHS
FOR 39 MONTHS WITH \$0 SECURITY DEPOSIT

LEASE APR
4.8%

\$0 DOWN PAYMENT



2006 CHRYSLER 300

★★★★★ NHTSA 5 STAR Front impact

- 250 hp 3.5L High-Output V6 engine
- 5-speed automatic transmission and Auto/Stick™
- AM/FM/CD stereo with 4 speakers
- 4 wheel disk brakes with anti-lock and All-Speed Traction Control
- 4 wheel independent suspension
- Air conditioning • Rear-wheel drive with Electronic Stability Program (ESP)
- Power locks, heated, foldaway mirrors

OR LEASE FOR
\$349 ‡ PER MONTH FOR 39 MONTHS WITH \$1,750 DOWN PAYMENT \$0 SECURITY DEPOSIT

LEASE APR
0.8%



2006 JEEP LIBERTY SPORT 4X4

★★★★★ NHTSA 5 STAR Side impact

- 210 hp 3.7L engine
- Command-Trac™ part time 4WD
- All speed Traction Control System
- Electronic Stability Program (ESP) with Electronic Roll Mitigation
- Automatic transmission
- Power windows, mirrors & locks
- Air conditioning • Remote keyless entry

OR LEASE FOR
\$348 ‡ PER MONTH FOR 36 MONTHS WITH \$0 SECURITY DEPOSIT

LEASE APR
1.8%

OR CHOOSE
0% PURCHASE FINANCING ∞ FOR 36 MONTHS

the momentum **continues**

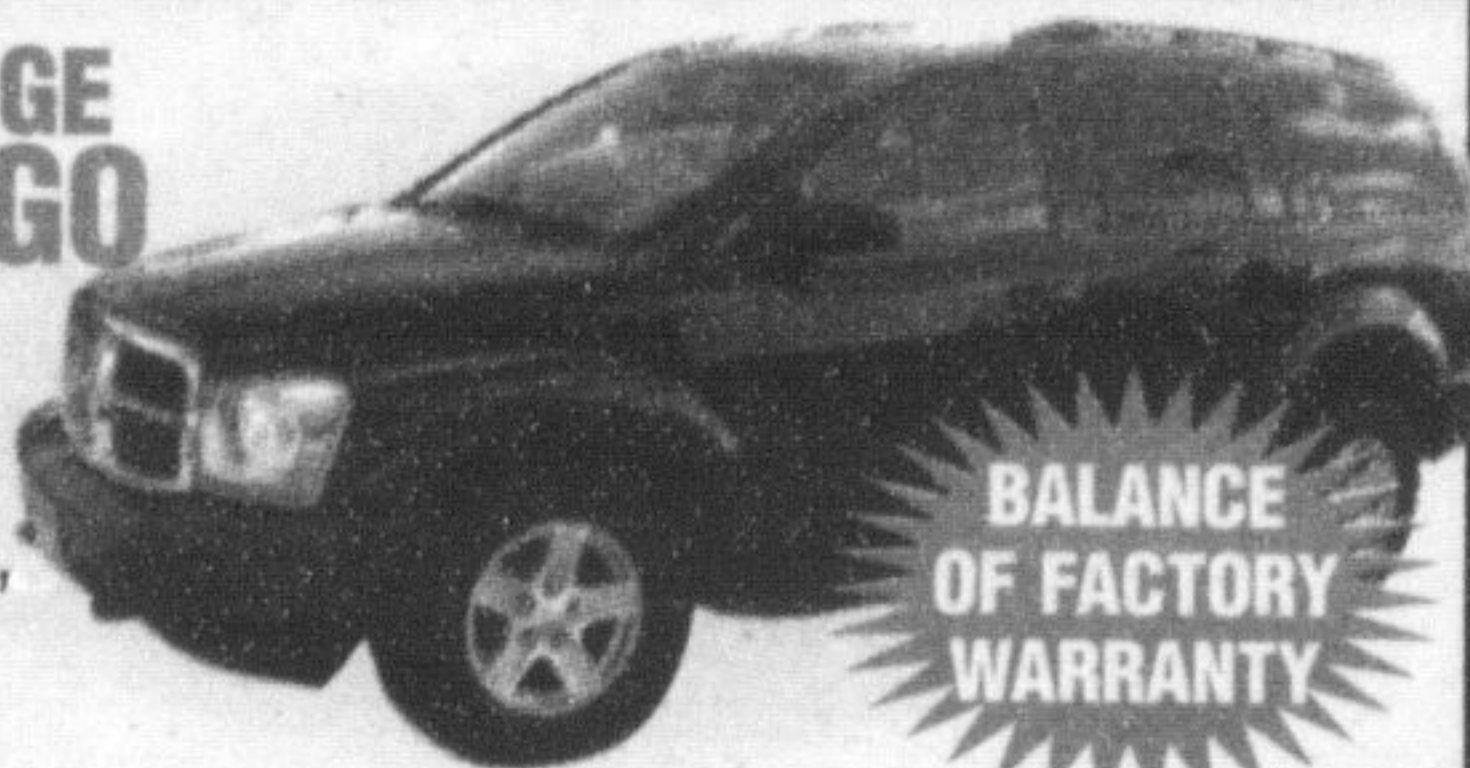


Jeep

*** GARY'S PRE-OWNED SPECIALS ***

2005 DODGE DURANGO

4.7L 8 cyl., leather, 7 pass, 30,000 kms. Former rental. Stk P3154



BALANCE OF FACTORY WARRANTY

\$25,888*

2005 CHRYSLER SEBRING TOURING

6 cyl, alum wheels, trac control, ABS brakes, air, auto, pw, pdl.

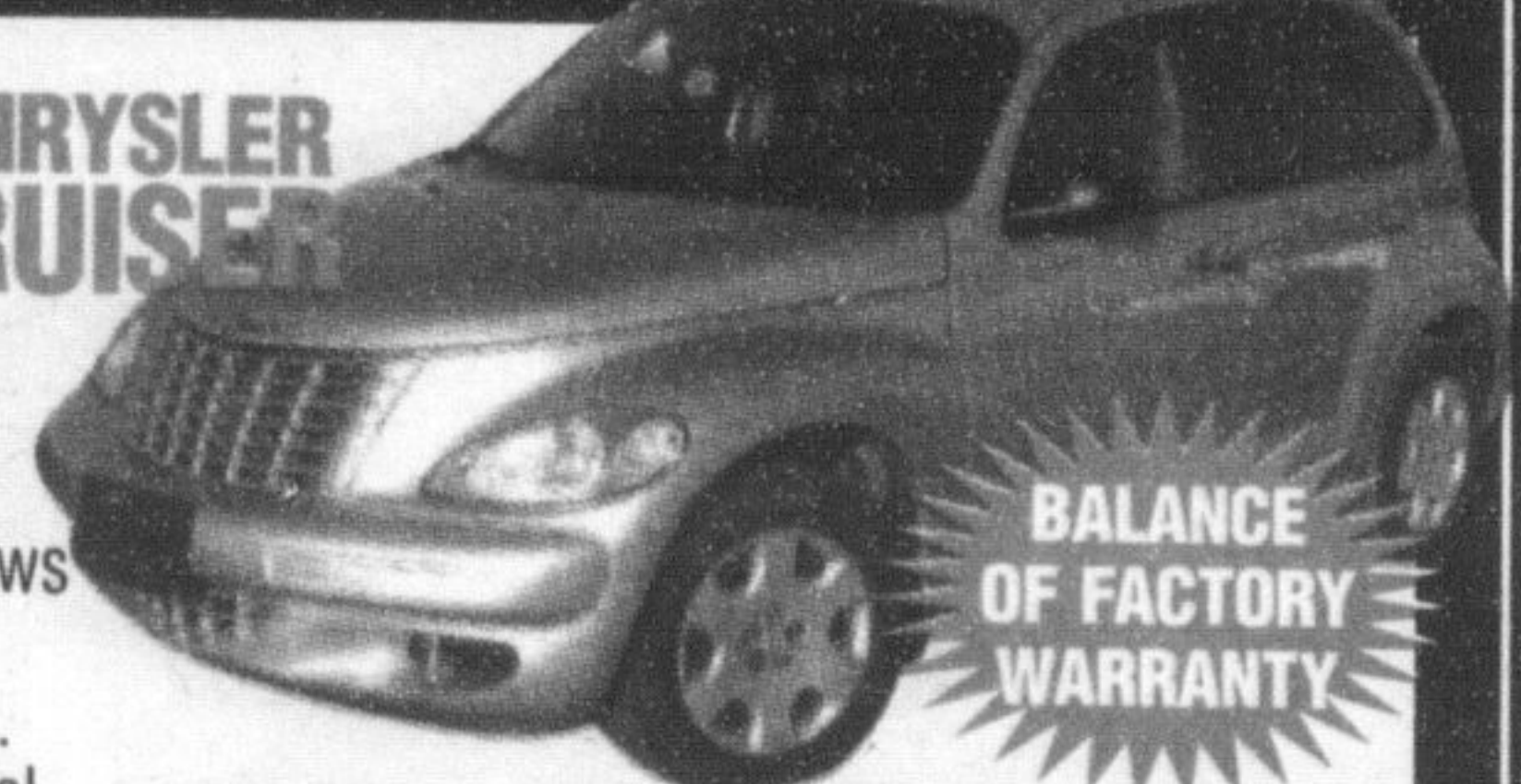


\$340 PER MONTH FOR 60 MONTHS WITH \$500 DOWN

\$14,888*

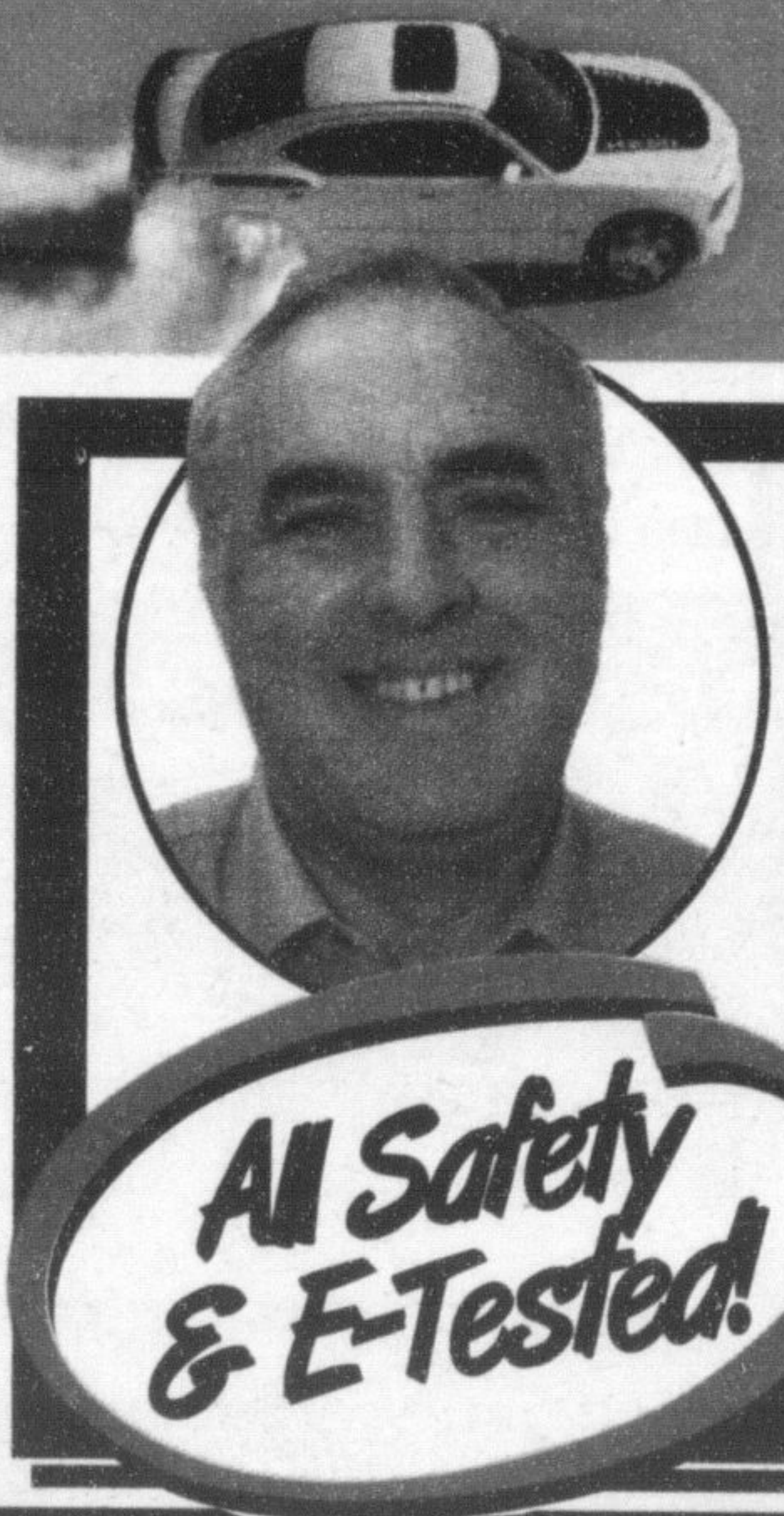
2005 CHRYSLER PT CRUISER

Auto, 2.4L, tilt, p.windows & locks, 25,000 kms. Former rental. Stk P3083



BALANCE OF FACTORY WARRANTY

\$14,888*



Hunt Chrysler Jeep
Your **FIVE STAR** Dealership



500 BRONTE ST. S.

www.huntchrysler.ca

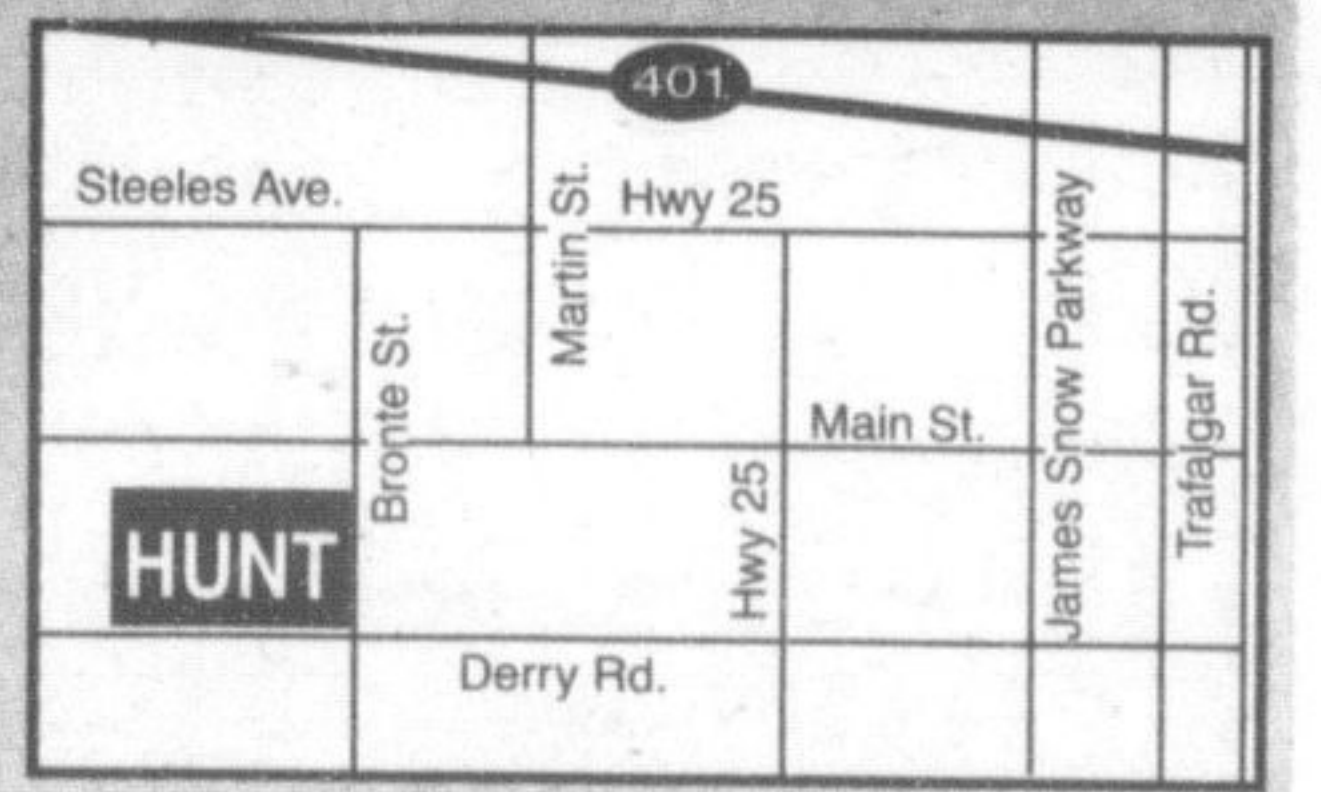
SERVICE/PARTS: www.huntchrysler.com

Milton:
Toll Free:
Email:

sales@huntchrysler.com

(905) 876-2580
1-866-848-8816

SALES: Mon-Thurs 9-9, Fri. 9-6, Sat. 9-5
SERVICE: Mon-Fri 8-5, Tues. 8-8, Sat. 8-12



Wise customer read the fine print: *, †, ‡, ∞ Limited time offers apply to retail deliveries only. Excludes freight (\$1050 for Liberty and Caliber, \$1200 for 300) license insurance, registration, \$50 PPSA, any retailer administration fees and applicable taxes. Retailer order/trade may be necessary. Financing and leasing are subject to approval by Chrysler Financial. See retailer for specific pricing details and conditions. Retailers are free to set individual prices. *Purchase price applies only to 2007 Caliber SXT (24D) models. Lease based on 36 month term for 2006 Liberty Sport (298): total lease obligation is \$12,528 @ 1.8% lease APR with \$0 Down. Leases based on 39 month terms for 2006 300 (27H) total lease obligation is \$15,361 @ 0.8% lease APR with \$1,750 down payment and 2007 Caliber SXT (24D): total lease obligation is \$10,725 @ 4.8% lease APR with \$0 down. Freight (\$1,050 for Liberty and Caliber, \$1,200 for 300) first months payment, down payment (300) only, any retailer administration fees and \$50 PPSA are due at lease inception. Kilometer limited to 61,200 for 36 month terms and 66,300 for 39 month terms; charge of \$0.15/km for excess kilometers. 0% purchase financing for 26 month terms on 2006 Liberty (excluding Diesel) models. Example: \$36,000 financed at 0% for 36 months, monthly payment is \$1,000, cost of borrowing is \$0 and the total obligation is \$36,000. Based on U.S. National Highway Traffic Safety Administration (NHTSA) scoring system for 2006 model year Jeep Liberty and Chrysler 300. Auto/Stick is a trademark of Mr. Gasket, Inc. Command-Trac is a trademark of Daimler Chrysler Corporation. Jeep is a registered trademark of Daimler Chrysler Corporation. * Used Cars, admin fee, license fee & GST & PST extra. † Monthly payment is 60 mths term \$ 7.98% borrowing \$12,000 interest charge \$2,592. OAC. Taxes included in payment.

FINANCING PROVIDED BY
Chrysler Financial