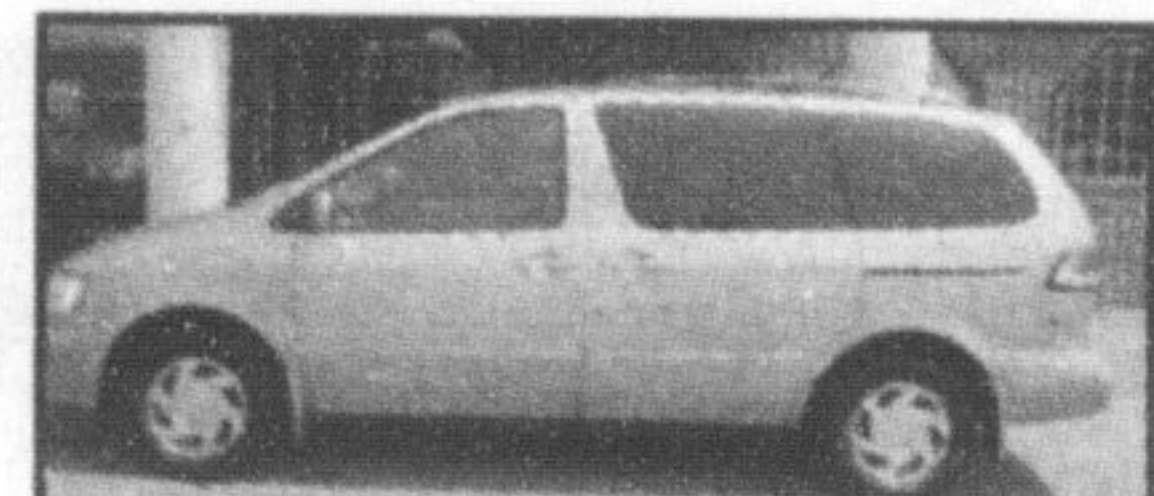
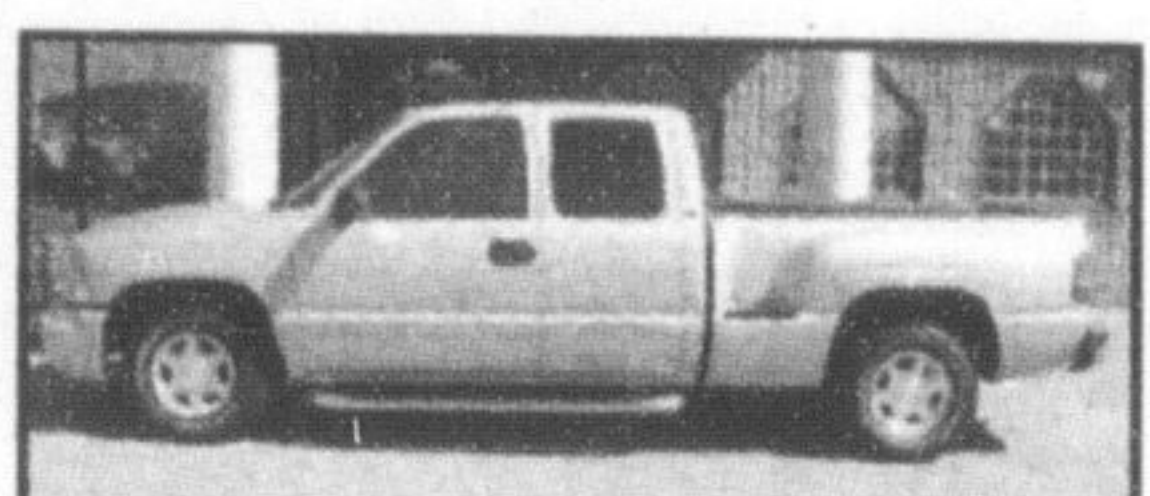


Some dealers like to talk about the number of cars they sell in a year. We'd rather talk about the number of years we've been selling cars.

Here's just a sample of over 250 vehicles we have in stock.



2003 TOYOTA SIENNA LE
This one owner beauty traded here for a new Toyota is equipped the way you like it with appearance package, Quad Seats, Rear AC and full power package with only 67,150kms. STK # 522473.
FEATURED NOW AT \$21,995



2004 GMC SIERRA 1500 SLE EXTENDED CAB
A very rare sharp as a pin stepside model with 4 brand new tires. Full owner equipment group with heated mirrors and Tow package. Only 61,627kms. STK # 272634.
DRIVE AWAY AT \$22,995



2002 MAZDA TRIBUTE ES-V6 4x4
Another one-owner vehicle traded here. Fully loaded including leather and power moonroof. This mint vehicle is a must see. STK # M08563.
PRICED TO MOVE AT \$15,995



2004 DODGE CARAVAN
This midsize blue family mover is superbly equipped with captain's chairs, full power equipment group, roof rails and much more. STK #686708.
ONLY AT GORRUD'S FOR \$12,995



2002 TOYOTA RAV4 "C" PACKAGE
Traded here, this meticulously maintained gem with a sporty 5-speed silky smooth manual transmission & AWD will impress even the most demanding enthusiast. Full power group. STK #K32079.
DRIVE AWAY AT \$16,495



2003 HONDA EX-L
This is a super sporty 2 dr. coupe with full leather and power sunroof. 4 cyl. engine and auto trans. move this fine automobile. With under 52,000kms, there's still plenty of factory warranty remaining. STK #825205.
VALUE PRICE: \$21,995

BUICK

2002 CENTURY SPECIAL EDITION	\$10,995
2002 CENTURY LIMITED	\$11,995
2004 CENTURY	\$12,995
2002 REGAL LS	\$13,995
2002 PARK AVENUE	\$17,995
2003 REGAL GS	\$17,995
2005 ALLURE CX	\$19,995

CADILLAC

2000 ESCALADE	\$17,995
2003 CTS	\$27,995
2003 ESCALADE	\$38,995

CHEVROLET

2002 CAVALIER Z24	\$12,995
2003 MALIBU	\$12,995
2004 IMPALA - 2 TO CHOOSE!	FROM: \$13,995
2003 IMPALA LS	\$16,995
2005 IMPALA LS	\$20,995

CHEVROLET TRUCK

2002 VENTURE LS - 2 TO CHOOSE!	FROM: \$11,995
2000 S-10 LS EXTENDED CAB STEPSIDE	\$13,995
2004 ASTRO CARGO - 2 TO CHOOSE!	FROM: \$13,995
2004 VENTURE VALUE VAN	\$13,995
2003 S-10 LS EXTENDED CAB STEPSIDE	\$15,995
2005 EXPRESS 2500 CARGO VAN	\$17,995
2003 SILVERADO 1500 LS EXT CAB Z71	\$21,995
2005 ASTRO CARGO	\$22,995
2003 AVALANCHE 1500 4X4	\$23,995
2003 SUBURBAN K1500LT 4X4	\$23,995
2004 AVALANCHE 1500 Z66	\$23,995
2004 AVALANCHE -1500 4X4 3 J0 CHOOSE!	FROM: \$23,995
2003 TAHOE LT1 4X4	\$25,995
2004 SILVERADO 1500 LT EXT CAB	\$28,995
2005 AVALANCHE 1500 4X4 Z71 OFF-ROAD	\$28,995
2003 SILVERADO 3500 LT EXT CAB DIESEL	\$34,995

CHRYSLER

2005 PT CRUISER - AIR / AUTO	\$14,995
2005 SEBRING TOURING	\$15,995

DODGE

2002 CARAVAN SE	\$11,995
2002 GRAND CARAVAN SPORT	\$13,995
2006 MAGNUM SXT - 2 TO CHOOSE!	FROM: \$23,995

FORD

2004 FOCUS WAGON ZTW	\$11,995
2003 FOCUS SEDAN ZTS	\$13,995
2003 WINDSTAR SPORT - 2 TO CHOOSE!	FROM: \$13,995
2003 WINDSTAR SPORT-TV - 3 TO CHOOSE! FROM:	\$13,995
2005 FREESTAR SE - 2 TO CHOOSE!	FROM: \$15,995
2003 WINDSTAR LIMITED - 2 TO CHOOSE!	FROM: \$17,775
2003 ESCAPE XLT 4X4 - 2 TO CHOOSE!	FROM: \$17,995
2003 EXPLORER - 5 TO CHOOSE!	FROM: \$18,995
2005 ESCAPE XLT V6 AWD	\$18,995
2003 F-150 SUPERCREW 4X4 - 3 TO CHOOSE!	FROM: \$23,995
2004 ESCAPE XLT 4X4	\$22,995
2004 F-250 EXTRACAB SUPERDUTY XLT DIESEL 2 WD	\$27,995
2004 F-150 SUPERCREW - 2 TO CHOOSE!	FROM: \$28,995
2004 EXPEDITION EDDIE BAUER 4X4	\$29,995

GMC

2000 JIMMY 4X4 SLE	\$11,950
2002 SIERRA 1500SL EXT. CAB	\$13,995
2004 SIERRA 1500SL REG CAB	\$16,995
2003 SIERRA 1500SL REG CAB 4X4	\$18,995
2003 SIERRA 1500SLE EXT CAB - 2 TO CHOOSE!	\$19,995
2003 SONOMA SLS EXT CAB STEPSIDE	\$16,995
2004 SIERRA 1500SLE EXT CAB	\$22,995
2005 SAVANA 3/4 TON - 2 TO CHOOSE!	FROM: \$24,950
2003 YUKON SLT 4X4 - 2 TO CHOOSE!	FROM: \$25,995
2003 SIERRA 1500HD SLE 4X4 CREW CAB	\$26,995
2003 YUKON XL K1500SLT 4X4	\$27,995
2003 YUKON DENALI XL AWD	\$33,995
2004 YUKON DENALI AWD	\$39,995

HONDA

2001 CR-V LIMITED AWD	\$17,995
2003 ODYSSEY LX	\$20,995
2002 ACCORD EX-L COUPE	\$21,995
2003 ODYSSEY EX	\$26,995

HYUNDAI

2003 SONATA GL	\$10,995
2002 SONATA GL - 5 TO CHOOSE!	FROM: \$11,995
2002 SONATA GLX V6	\$16,895
2002 SANTA FE GL AWD	\$16,995
2002 SANTA FE GLS 4X4	\$17,995
2003 SANTA FE GLS 4X4	\$17,995
2004 SANTA FE GL V6 AWD	\$19,995

JEEP

2003 LIBERTY SPORT 4X4	\$16,995
------------------------	----------

MAZDA

2002 TRIBUTE ES V6 4X4	\$15,995
2003 TRIBUTE DX V6 4X4	\$15,995

NISSAN

2002 SENTRA XE	\$10,995
2002 SENTRA GXE	\$11,995
2002 ALTIMA 2.5 S	\$15,950
2002 ALTIMA 3.5 SE	\$16,995
2005 ALTIMA 2.5 S	\$18,995
2002 MAXIMA SE	\$20,995
2005 ALTIMA 2.5 SL	\$24,995
2001 ALTIMA GXE LIMITED	\$10,995

OLDSMOBILE

2002 INTRIGUE GL	\$14,995
------------------	----------

PONTIAC

2002 GRAND AM SE1 SEDAN - 2 TO CHOOSE!	FROM: \$10,995
2002 GRAND AM SE1 COUPE	\$11,995
2002 GRAND PRIX GT	\$11,995
2003 GRAND AM GT1	\$13,950
2003 MONTANA EXTENDED	\$13,995
2003 MONTANA 2 TO CHOOSE!	FROM: \$13,995
2003 MONTANA EXTENDED - 2 TO CHOOSE!	FROM: \$14,690
2002 GRAND PRIX GT - 4 TO CHOOSE!	\$14,995
2003 GRAND PRIX GTP	\$15,995
2005 GRAND PRIX	\$15,995
2005 MONTANA SV6	\$18,995

SUBARU

2002 IMPREZA WRX	\$18,995
------------------	----------

TOYOTA

2002 ECHO	\$10,995
2000 RAV4 AWD	\$12,995
2002 CAMRY LE	\$13,995
2003 ECHO 4AT - 2 TO CHOOSE!	FROM: \$13,995
2003 MATRIX BASE	\$13,995
2005 ECHO "B" PACKAGE	\$15,950
2000 SIENNA XLE	\$15,995
2001 SIENNA LE	\$15,995
2004 COROLLA CE	\$15,995
2003 CAMRY LE	\$16,995
2005 COROLLA CE - 5 TO CHOOSE!	FROM: \$16,995
2005 MATRIX B-PACKAGE	\$17,895
2004 CAMRY LE	\$17,995
2006 COROLLA CE - 2 TO CHOOSE!	FROM: \$18,988
2003 MATRIX XRS - 2 TO CHOOSE!	FROM: \$18,995
2006 MATRIX B-PACKAGE - 5 TO CHOOSE!	FROM: \$20,795
2002 RAV4 B-PACKAGE	\$20,995
2003 SIENNA LE	\$21,995
2002 HIGHLANDER 3.0 V6 4WD	\$23,995
2003 TACOMA EXTRA CAB TRD OFF-ROAD	\$24,995
2006 CAMRY LE - 2 TO CHOOSE!	FROM: \$26,995
2005 SIENNA CE	\$27,995
2003 4RUNNER LIMITED V6	\$28,995
2004 SIENNA LE	\$28,995
2003 HIGHLANDER LIMITED	\$31,995
2003 4RUNNER LIMITED V8 - 2 TO CHOOSE!	FROM: \$33,995
2005 TACOMA 4X4 ACCESS CAB V6	\$34,300
2006 SIENNA LE - 2 TO CHOOSE!	FROM: \$34,988
2005 TUNDRA DOUBLE CAB 4X4	\$37,995
2005 SIENNA XLE LIMITED	\$43,800
2002 ECHO "B" PACKAGE	\$11,995

GREAT VEHICLES UNDER \$10,000

CHEVROLET

2002 CAVALIER Z24 - 2 TO CHOOSE!	FROM: \$9,995
----------------------------------	---------------

DODGE

1999 CARAVAN - 2 TO CHOOSE!	FROM: \$7,995
2000 GRAND CARAVAN	\$9,995

FORD

2000 ESCORT ZX2 COUPE	\$6,895
-----------------------	---------

HYUNDAI

2003 ELANTRA - 5 TO CHOOSE!	FROM: \$7,995
-----------------------------	---------------

OLDSMOBILE

2002 ALERO GL	\$8,995
---------------	---------

PONTIAC

2000 SUNFIRE SE 2-DR.	\$7,995
2001 SUNFIRE 2-DR	\$7,995
2002 SUNFIRE SLX SEDAN	\$8,650
2002 SUNFIRE SE SEDAN	\$8,950
2001 GRAND AM SE1 V6	\$9,850
2002 MONTANA - 2 TO CHOOSE!	FROM: \$9,950

SATURN

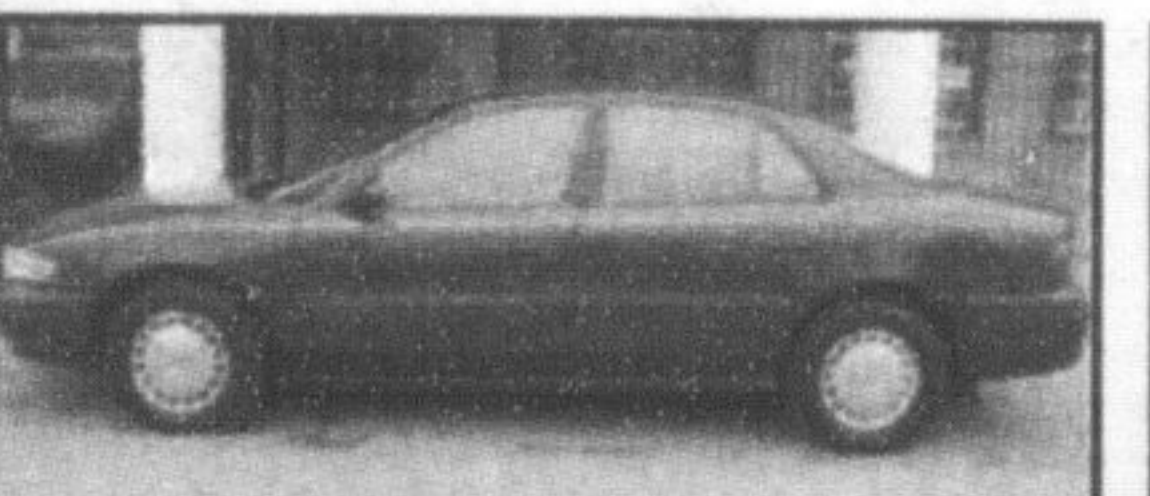
2002 SC1 COUPE	\$6,995
2002 SL1 SEDAN	\$8,695

TOYOTA

1998 COROLLA	\$8,995
2000 CAMRY CE	\$8,995



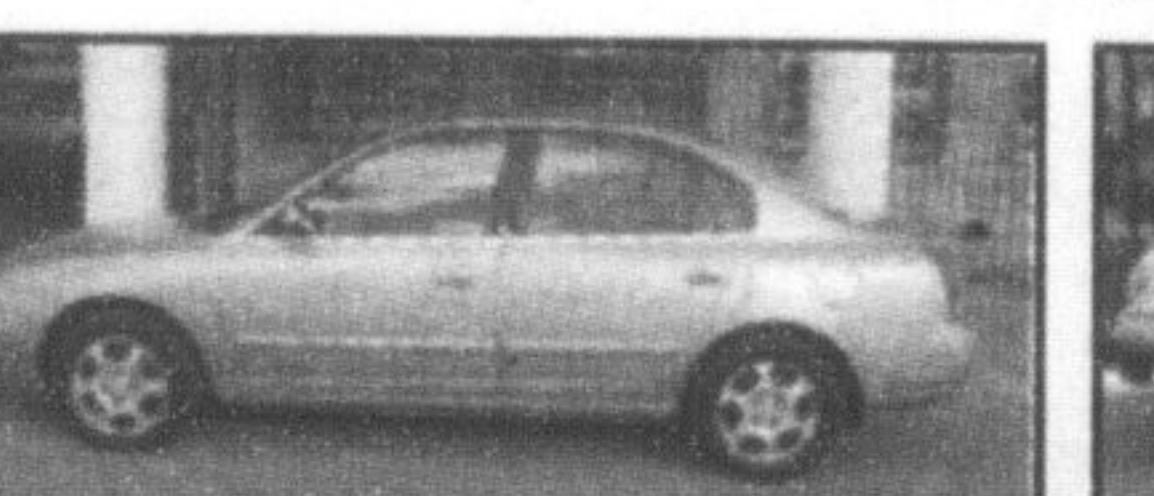
2002 PONTIAC GRAND AM SE1
This is a very clean car with brand new Dunlop tires. Has that sporty Pontiac look with Aluminum rims and spoiler. Power windows, locks, traction control and more makes buying this car an easy decision. Only 55,329 kms. STK # 139984.
PRICED TO OWN: \$18,995



2002 BUICK CENTURY
The 2002 Century ranked first according to JD POWER in the premium mid-size segment. This Special Edition trim package has power driver's seat, aluminum rims and all other standard Buick features. STK # 196395.
SPECIAL EDITION = SPECIAL PRICE: \$18,995



2005 TOYOTA ECHO
Why buy new? Save with this "B" package" equipped Echo. With only 23667 kms, there's plenty of factory warranty left. Compare apples to apples. STK # 353019.
DARE TO COMPARE: \$15,950



2002 HYUNDAI ELANTRA VE
This car speaks for itself. The right price. The right mileage. Remaining factory warranty and all the features you need including power windows, locks, cruise & tilt. STK # 232840.
YOURS FOR: \$10,950



2003 TOYOTA TACOMA EXTRA CAB
The TRD Off-road package makes this silver beauty stand out. Nicely equipped with power windows, locks, cd and cruise. This truck will get you there in style. Only 38,488kms and balance of Toyota powertrain warranty. STK # 158273.
NICE PRICE: \$24,995

Some have said that this business is a "numbers game." Well, as much fun as we've had over the past 44 years, we never thought of this business as a game. Nor have we ever thought it was about the numbers. For us, it's always been about the customer. We've always figured that if we could make them happy and keep them happy then the numbers would look after themselves. Few used car dealerships are as anti-auto establishment. But then again, you would expect a company established in the 60s to be a little more radical.

GORRUD'S AUTO PLUS

Region demands better public notice for escarpment proposals

By Melanie Hennessey
CANADIAN CHAMPION STAFF

The Region wants the Niagara Escarpment Commission (NEC) to step up its efforts when it comes to notifying the public about developments proposed for the escarpment.

At its meeting Wednesday, Halton's planning and public works committee endorsed having staff request that the Ministry of Natural Resources change the Niagara Escarpment Planning and Development Act so that public notice is required for development permit and plan amendment applications on escarpment lands.

Wards 1 and 3 Milton Councillor Barry Lee, who sits on the committee, applauded the concept.

"I think anything that further involves the public with regard to the Niagara Escarpment Commission's decisions is positive," he said.

Taylor doubtful
Meanwhile, Burlington Councillor John Taylor expressed some doubt that the Region's talks with the ministry will prove to be successful.

"I have been fighting this issue for 10 years and have not won yet," he remarked. "We could get lucky, but after 10 years I don't feel lucky anymore."

Taylor suggested that in the event the ministry says no, the matter should be brought back before the committee for further discussion — something his fellow committee members supported.

Town staff agree
A staff report on the topic noted that Milton planning staff also agree changes to the current NEC process of public notification is warranted.

"They further recommended that all site-specific Niagara Escarpment Plan amendment applications should be the subject of a public meeting to be held by the commission in the local municipality where the application is proposed," the report from Commissioner of Planning and Public Works Peter Crockett noted.

It goes on to say that NEC staff has expressed concern to the Region about changing its current process "because of the additional cost of advertising, additional staff time and delays in reaching decisions on applications."

The matter will go before regional council Wednesday.

Melanie Hennessey can be reached at mhennessey@miltoncanadianchampion.com.