

Dateline

Wednesday March 22

This is the last day to donate books for the Milton and district Canadian Federation of University Women's annual **used book sale**. Books can be dropped off at the Milton Public Library or at the Loblaw's entrance of Zellers in Milton Mall. The sale takes place March 24 and 25 at Milton Mall.

The **Early Years of Recovery Family Support Group** takes place at 7 p.m. at the Halton-Peel regional office of the Schizophrenia Society of Ontario in the second floor boardroom at Milton Mall. This new support group is for family members and friends whose loved ones have experienced their first psychotic episode within the past five years. For more information, call (905) 876-1647.

CARP, Canada's Association for the **Fifty Plus**, Halton chapter, meets at 7:30 p.m. at the Burlington Seniors' Centre, 2285 New St., with guest speaker Joyce Savoline, Halton Regional chair, talking about recent events and plans for the future. For more information, call Harry Bowers at (905) 335-5717.

Halton Healthcare and the Heart and Stroke Foundation of Ontario present a free seminar entitled 'Know Your Numbers: Understanding, Preventing and Controlling Hypertension' at 7 p.m. at Le Dome Banquet Hall, 1173 North Service Rd. E., in Oakville with displays and refreshments at 6:30 p.m. To reserve a seat, call (905) 338-4379 or e-mail elittle@haltonhealthcare.on.ca.

Milton District Hospital holds a one-on-one **breastfeeding clinic** with a certified lactation consultant from 1:30 to 3 p.m. For more information or to make an appointment, call Jean Gallen at (905) 878-2383, ext. 7030.

Ebenezer United Church, 12274 Guelph Line (north of No. 20 Sideroad), holds its **Wednesday Evening Worship** from 7 to 8 p.m. followed by a chance to discuss real issues honestly. For more information, call Pastor Mark Rutledge at (905) 854-2423 or (519) 824-7303.

Adult drop-in volleyball takes place from 2 to 3 p.m. at the Milton Leisure Centre. The cost is \$3.50.

The Women's Centre, suite 210 in Hopedale Mall at Rebecca Street and Third Line in Oakville, holds its **Abuse Support Group** from 6 to 8 p.m. To register or for more information, call (905) 847-5520.

The Milton Christian Ladies Coffee Hour is held from 9:30 to 11 a.m. at Milton Gospel Hall, 306 Ontario St. featuring master gardener Belinda Gallagher talking about climbers and

vines and guest speaker Barbara McDougal. Admission is free. For more information or transportation, call Nancy at (905) 876-0831.

The Milton Safety Committee meets at 7 p.m. at the Milton police station on Childs Drive. For more information, call Jan Mowbray at (519) 853-4492 or e-mail mowbrayj@sympatico.ca.

The Milton Seniors' Activity Centre, 500 Childs Dr., holds a **lunch** at 11:30 a.m. The cost is \$6. Sign up at the recep-

tion desk in advance or call in your order at (905) 875-1681. **Contract bridge** takes place at 9:30 a.m. The cost is \$2 for members and \$4 for non-members. **Shuffleboard** is held from 1:30 to 3:30 p.m. in the games room. The cost is \$2 for members and \$4 for non-members.

Thursday March 23

The Halton branch of the Schizophrenia Society of Ontario (SSO) holds its **Schizophrenia Family**

Support Group for friends and family of people affected by schizophrenia and other serious mental illnesses. It takes place in the SSO office on the second floor of Milton Mall at 7 p.m. For more information, call (905) 876-1647.

Milton District Hospital holds a one-on-one **breastfeeding clinic** with a certified lactation consultant from 7 to 9 p.m. For more information or to make an appointment, call Jean Gallen at **see more DATELINE on page A17**

BE A DESIGNATED DRIVER



Join the many people who agree not to drink alcoholic beverages...and to drive everyone in their group home safely.

NORTH END NISSAN

LET'S SEAL THE DEAL ON ALL IN-STOCK NISSAN'S

2006 MURANO'S



Not exactly as shown

LEASE FOR \$519 /MONTH FOR 48 MONTHS
\$5000 Down tax-incl.
- 3000 Cash back.
\$2000 Down (cash or trade)

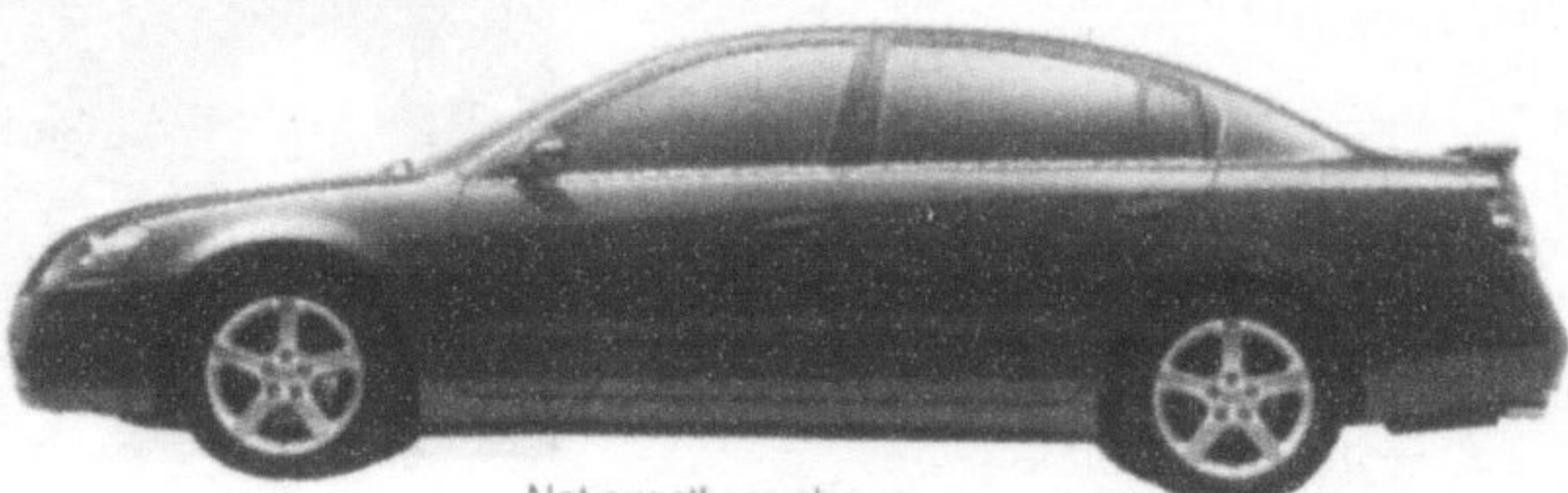
BUY FOR \$725 /MONTH FOR 72 MONTHS

3.8% FINANCING AVAILABLE

\$3000 CUSTOMER CASH (ON ALL MURANO'S)

- 3.5L DOHC 24-valve V6 engine (245 HP) • Xtronic CVT Transmission
- 3,500lb towing capacity • ABS • 18" alloy wheels (6-spoke) • Fog lights (front) • Roof Rails • Cruise control • Power heated outside mirrors • Power outdoor locks • Power windows with Auto up/down • Power adjustable pedals • Rearview camera • Outside temp display • AM/FM/Cassette audio system w/ 6-disc in dash CD changer • BOSE Audio system (250 watts)

2006 ALTIMA'S



Not exactly as shown

LEASE FOR \$319 /MONTH FOR 48 MONTHS
\$5000 Down tax-incl.
- 3000 Cash back.
\$2000 Down (cash or trade)

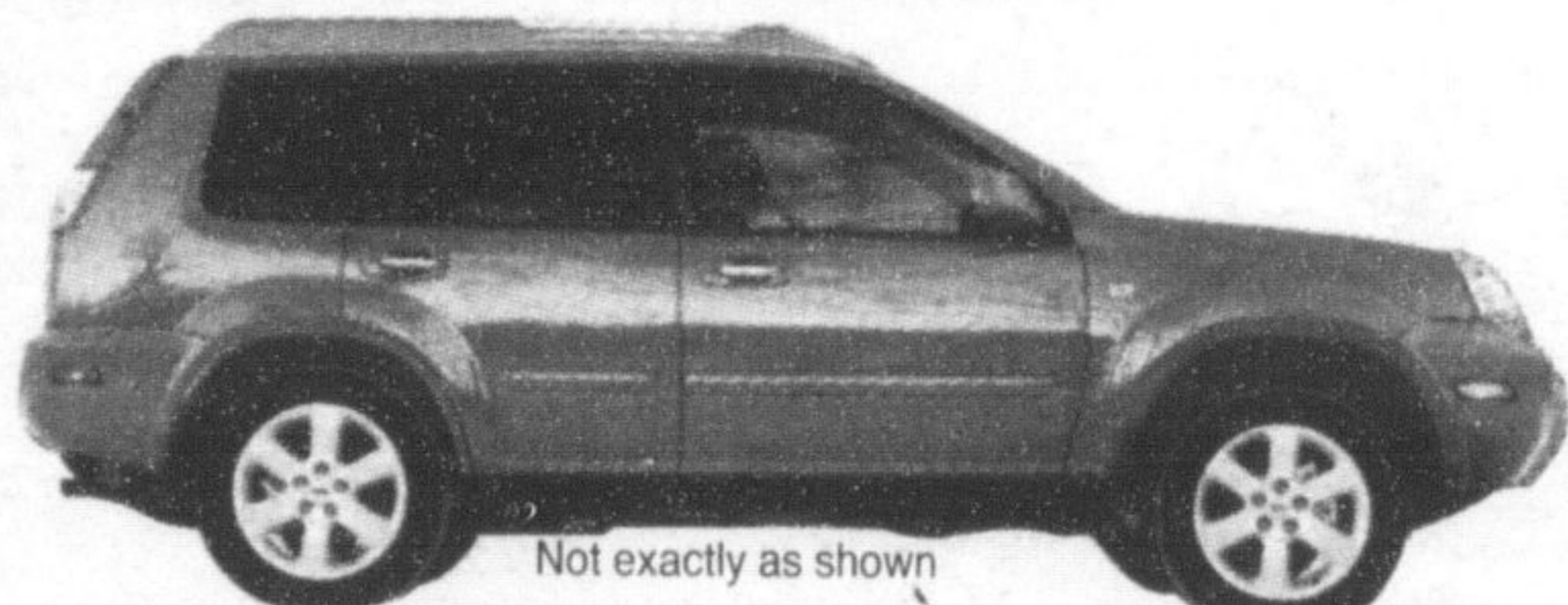
BUY FOR \$435 /MONTH FOR 72 MONTHS

1.8% FINANCING AVAILABLE

\$3000 CUSTOMER CASH (ON ALL ALTIMA'S)

- 2.5L, 16 Valve, DOHC Engine (175HP) • 4 Wheel Disc Brakes • Mudguards (Front & Rear) • Auto On/Off Headlights • Heated Outside Mirrors (Colour Keyed) • 8 Way Manual Driver's Seat • 60/40 Split Rear Seat w/Lock • Variable Intermittent Wipers • Remote Fuel Lid Release • Power Trunk Release • Cruise Control • Tilt & Telescope Steering Column (Manual) • Power Heated Outside Mirrors • Power Door Locks • Power Windows W/Driver's Side Auto "Up/Down" • AM/FM/CD Audio System (100 Watt) • 6 Speakers • Immobilizer Key System • Automatic Transmission • ABS.

2006 X-TRAIL'S



Not exactly as shown

LEASE FOR \$329 /MONTH FOR 48 MONTHS
\$5000 Down tax-incl.
- 3000 Cash back.
\$2000 Down (cash or trade)

BUY FOR \$444 /MONTH FOR 72 MONTHS

1.8% FINANCING AVAILABLE

\$3000 CUSTOMER CASH (ON ALL X TRAIL)

- 2.5L, 16 Valve, DOHC Engine (165HP)
- 4 Wheel Disc Brakes • ABS • air conditioning
- power windows • power locks • AM/FM/CD
- cruise control • remote entry • power heated mirrors • tilt steering column • 6 way adjustable driver seat.

THUMBS UP!

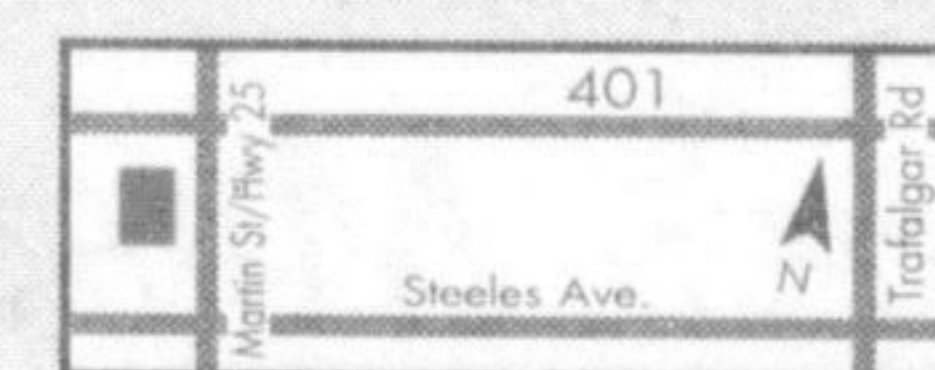
Whatever you're after, just thumb through the Classifieds and you'll be good to go! That's all there is to it!

The Canadian Champion
 905-878-2341
 875 Main Street, Milton
 Classified@miltoncanadianchampion.com

Milton's
NORTH END NISSAN LTD.

610 MARTIN STREET, MILTON
 905-878-4137

SALES DEPT. HOURS:
 Mon.-Thurs. 9:00 - 9:00
 Fri. 9:00 - 6:00
 Sat. 9:00 - 5:00



www.nissan.ca



*2006 Murano L6TG16 AA00 48 mth lease, 24,000 km per year, 4.5% APR, \$18,505 optional residual, 72 mth buy @ 5.8%. 2006 Altima T4RG76 AE00 48 mth lease, 24,000 km per year, 5.8% APR, \$11,665 optional residual, 72 mth buy @ 5.8%. 2006 Xtrail W6R676 AA00 48 mth lease 24,000 km per year, 5.8% APR, \$11,867 optional residual, 72 mth buy @ 5.8% APR. Excess km charge on all models is 10¢ per km over 96,000 km.