

# Nominations now accepted for ATHENA awards for mentors

Do you know someone who has assisted women in attaining their full potential? Someone who has demonstrated professional excellence and devoted time and energy within the community?

Nominations are currently being accepted for the second annual ATHENA North Halton awards, which will be presented May 25.

The deadline for nominations is March 31.

Nominees must live or work in Milton or Halton Hills.

The 2006 ATHENA Award recipient will be chosen by a selection committee of prominent community leaders and presented at a gala award celebration at Glencairm Golf Club.

The evening is designed to celebrate all the nominees including the recipient, who will receive an ATHENA sculpture.

ATHENA North Halton believes in incorporating the talent and expertise of women into the leadership of local businesses, communities and government.

The ATHENA Award was launched in 1982 by the Athena Foundation, a non-profit organization dedicated to creating leadership opportunities for women. Since then, more than 4,000 awards have been presented across North America and, most recently, in China.

The sponsors of ATHENA North Halton are Milton Toyota, the presenting sponsor, Milton Home Hardware, RBC Royal Bank, The Canadian Champion and TV Cogeco 14.

ATHENA North Halton's also collab-

# Nominees sought for CH awards

Conservation Halton wants to know about any good deeds or actions that enhanced the natural environment last year.

Since 1982, Conservation Halton (CH) has been recognizing people and organizations that have made significant contributions to conservation with its Conservation Awards of Excellence.

Until March 31, nominations are being accepted in six categories: citizen, community, education, stewardship, corporate, and the conservation hon-

our roll for long-time dedication to environmental protection.

The awards will be presented May 24 at the CH administration centre in Burlington. Winners' names are placed on a plaque displayed in the lobby of CH's office and individual plaques are presented to recipients.

In the past, nominees have included teacher associations, scout and guide groups, naturalist clubs, corporations, government agencies, farmers and

private landowners. Conservation actions have included activities such as tree planting, stream rehabilitation and clean-up, schoolyard naturalization projects, environmental education activities, wildlife improvement projects and fundraising for conservation.

For more information about the categories, the criteria and how to apply, call CH at (905) 336-1158 or visit [www.conservationalton.on.ca](http://www.conservationalton.on.ca).

orating with Girls Inc. North Halton to raise funds for its mentoring and group programs for young girls.

Nomination forms are available at [www.athenanorthhalton.ca](http://www.athenanorthhalton.ca), by e-mailing [info@athenanorthhalton.ca](mailto:info@athenanorthhalton.ca), or by calling Caren Walker at (905) 873-6815 or Ann James at (905) 854-0282.

## NORTH END NISSAN

### LET'S SEAL THE DEAL ON ALL IN-STOCK NISSAN'S

#### 2006 MURANO'S



Not exactly as shown

3.8% FINANCING AVAILABLE

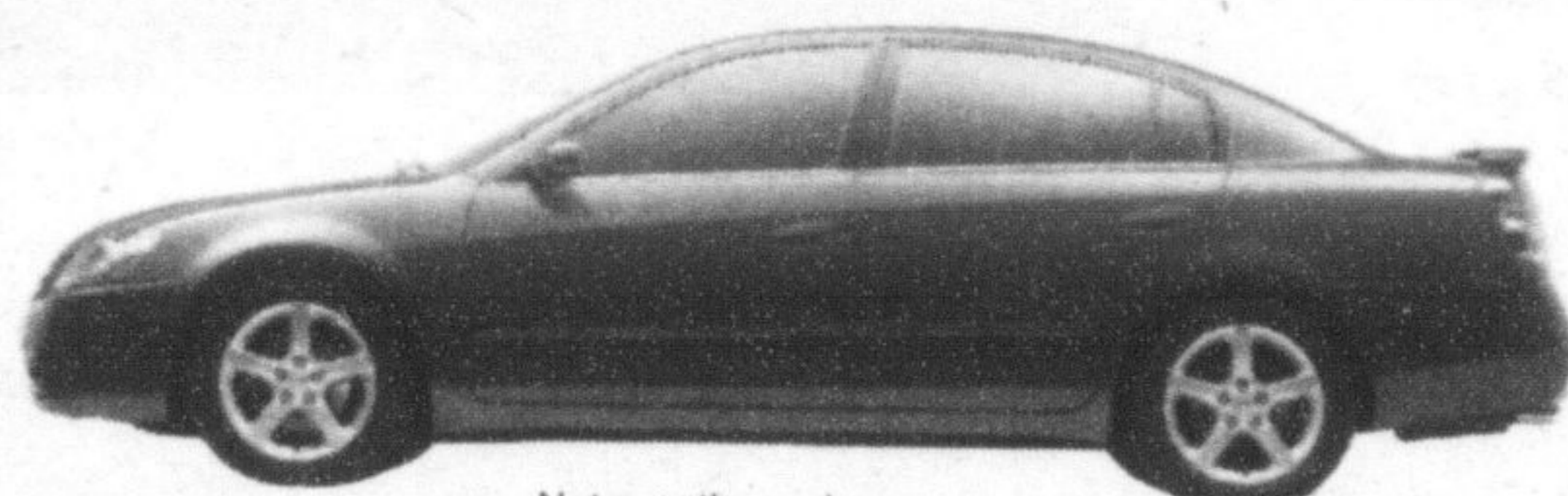
**\$3000** CUSTOMER CASH (ON ALL MURANO'S)

LEASE FOR **\$519** /MONTH\* FOR 48 MONTHS  
\$5000 Down tax-incl.  
- 3000 Cash back.  
\$2000 Down (cash or trade)

BUY FOR **\$725** /MONTH\* FOR 72 MONTHS

• 3.5L DOHC 24-valve V6 engine (245 HP) • Xtronic CVT Transmission • 3,500lb towing capacity • ABS • 18" alloy wheels (6-spoke) • Fog lights (front) • Roof Rails • Cruise control • Power heated outside mirrors • Power outdoor locks • Power windows with Auto up/down • Power adjustable pedals • Rearview camera • Outside temp display • AM/FM/Cassette audio system w/ 6-disc in dash CD changer • BOSE Audio system (250 watts)

#### 2006 ALTIMA'S



Not exactly as shown

1.8% FINANCING AVAILABLE

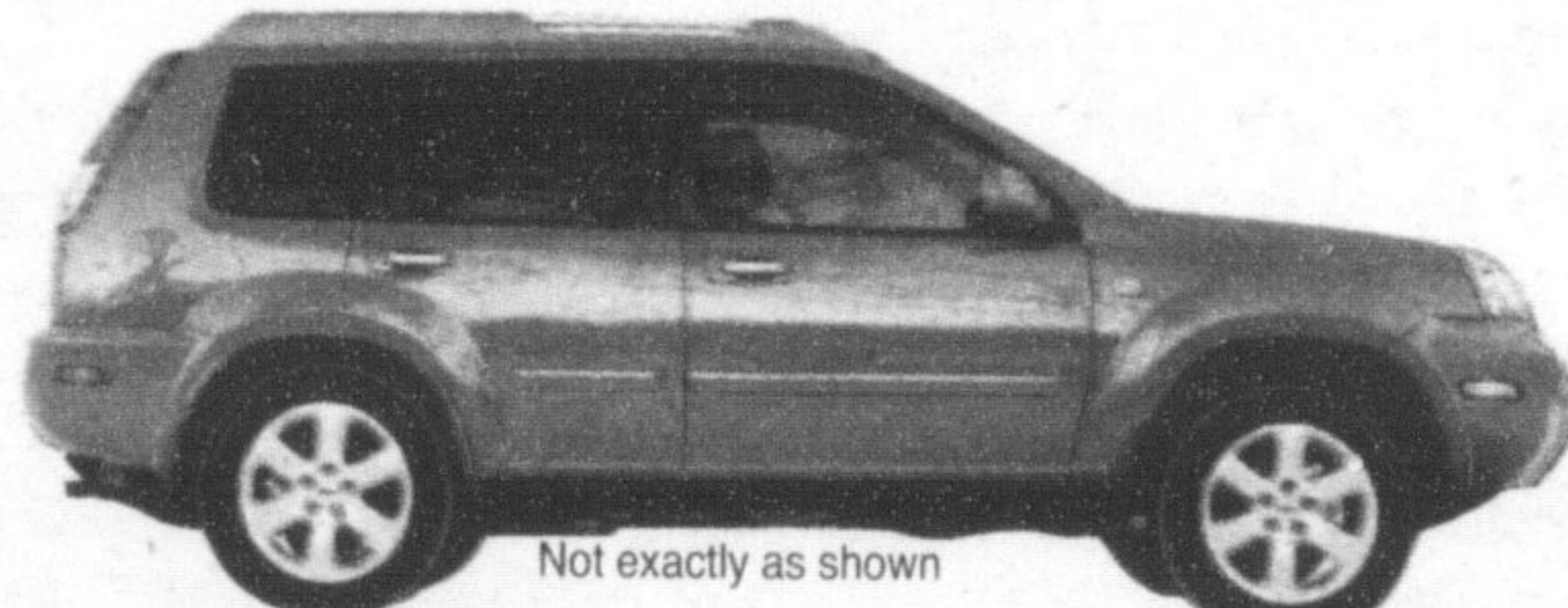
**\$3000** CUSTOMER CASH (ON ALL ALTIMA'S)

LEASE FOR **\$319** /MONTH\* FOR 48 MONTHS  
\$5000 Down tax-incl.  
- 3000 Cash back.  
\$2000 Down (cash or trade)

BUY FOR **\$435** /MONTH\* FOR 72 MONTHS

• 2.5L, 16 Valve, DOHC Engine (175HP) • 4 Wheel Disc Brakes • Mudguards (Front & Rear) • Auto On/Off Headlights • Heated Outside Mirrors (Colour Keyed) • 8 Way Manual Driver's Seat • 60/40 Split Rear Seat w/Lock • Variable Intermittent Wipers • Remote Fuel Lid Release • Power Trunk Release • Cruise Control • Tilt & Telescope Steering Column (Manual) • Power Heated Outside Mirrors • Power Door Locks • Power Windows W/Driver's Side Auto "Up/Down" • AM/FM/CD Audio System (100 Watt) • 6 Speakers • Immobilizer Key System • Automatic Transmission • ABS.

#### 2006 X-TRAIL'S



Not exactly as shown

1.8% FINANCING AVAILABLE

**\$3000** CUSTOMER CASH (ON ALL X TRAIL)

LEASE FOR **\$329** /MONTH\* FOR 48 MONTHS  
\$5000 Down tax-incl.  
- 3000 Cash back.  
\$2000 Down (cash or trade)

BUY FOR **\$444** /MONTH\* FOR 72 MONTHS

• 2.5L, 16 Valve, DOHC Engine (165HP) • 4 Wheel Disc Brakes • ABS • air conditioning • power windows • power locks • AM/FM/CD • cruise control • remote entry • power heated mirrors • tilt steering column • 6 way adjustable driver seat.

### OPEN HOUSES

#### SATURDAY MARCH 18TH

- 2-4 pm, 345 Alexander Cres., \$489,900  
Jack Vanderbreggen, Royal LePage Meadowtowne Realty, 905-878-8101
- 2-4 pm, 1193 Cobban Rd., \$389,000  
Jack Vanderbreggen, Royal LePage Meadowtowne Realty, 905-878-8101
- 2-4 pm, 1242 Turner Dr., \$309,900  
Helga Goldberg, Prudential Sadie Moranis Realty, 416-449-2020
- 2-4 pm, 307 Pettigrew Trail, \$279,900  
Mili Dragic, Sutton Group Realty Systems Inc., 905-896-3333
- 2-4 pm, 485 Fourth Line, \$327,500  
Andrea & Chris Seventikidis, Prudential Town Centre Realty, 905-878-9100

#### SUNDAY MARCH 19TH

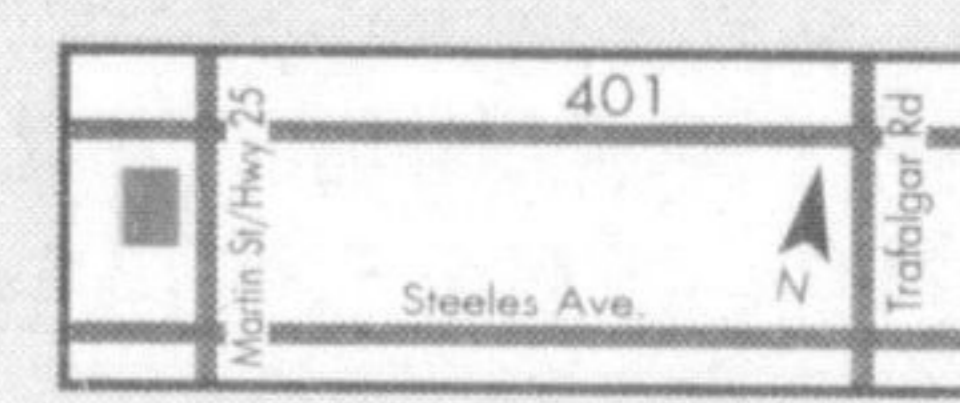
- 1-4 pm, 627 Clover Park, \$339,900  
Bob Stoutley, Royal LePage Meadowtowne Realty, 905-878-8101
- 2-4 pm, 815 Merritt Dr., \$314,900  
Debra Turk, Royal LePage Meadowtowne Realty, 905-878-8101
- 2-4 pm, 1040 Barclay Circle, \$274,900  
Adina Nonis, Royal LePage Meadowtowne Realty, 905-878-8101
- 2-4 pm, 345 Alexander Cres., \$489,900  
Jack Vanderbreggen, Royal LePage Meadowtowne Realty, 905-878-8101
- 2-4 pm, 1193 Cobban Rd., \$389,000  
Jack Vanderbreggen, Royal LePage Meadowtowne Realty, 905-878-8101
- 2-4 pm, 1242 Turner Dr., \$309,900  
Helga Goldberg, Prudential Sadie Moranis Realty, 416-449-2020
- 2-4 pm, 307 Pettigrew Trail, \$279,900  
Mili Dragic, Sutton Group Realty Systems Inc., 905-896-3333
- 2-4 pm, 485 Fourth Line, \$327,500  
Andrea & Chris Seventikidis, Prudential Town Centre Realty, 905-878-9100
- 2-4 pm, 1414 McDermott Way, \$272,888  
Barb King, ReMax Real Estate Centre 905-878-7777

Visit an Open House this Weekend!  
Also check the  
Weekend Spotlight on Homes & The Regional Page  
showcasing more Open Houses and New Listings!

Milton's  
**NORTH END NISSAN** LTD.

610 MARTIN STREET, MILTON  
905-878-4137

SALES DEPT. HOURS:  
Mon.-Thurs. 9:00 - 9:00  
Fri. 9:00 - 6:00  
Sat. 9:00 - 5:00



[www.nissan.ca](http://www.nissan.ca)



SHIFT.

\*2006 Murano L6TG16 AA00 48 mth lease, 24,000 km per year, 4.5% APR, \$18,505 optional residual, 72 mth buy @ 5.8%. 2006 Altima T4RG76 AE00 48 mth lease, 24,000 km per year, 5.8% APR, \$11,665 optional residual, 72 mth buy @ 5.8%. 2006 X-trail W6R676 AA00 48 mth lease 24,000 km per year, 5.8% APR, \$11,867 optional residual, 72 mth buy @ 5.8% APR. Excess km charge on all models is 10¢ per km over 96,000 km.